

Obrazová příloha

Sborník prací Filozofické fakulty brněnské univerzity. F, Řada uměnovědná. 1969, vol. 18, iss. F13, pp. -

Stable URL (handle): <https://hdl.handle.net/11222.digilib/110328>

Access Date: 16. 02. 2024

Version: 20220831

Terms of use: Digital Library of the Faculty of Arts, Masaryk University provides access to digitized documents strictly for personal use, unless otherwise specified.

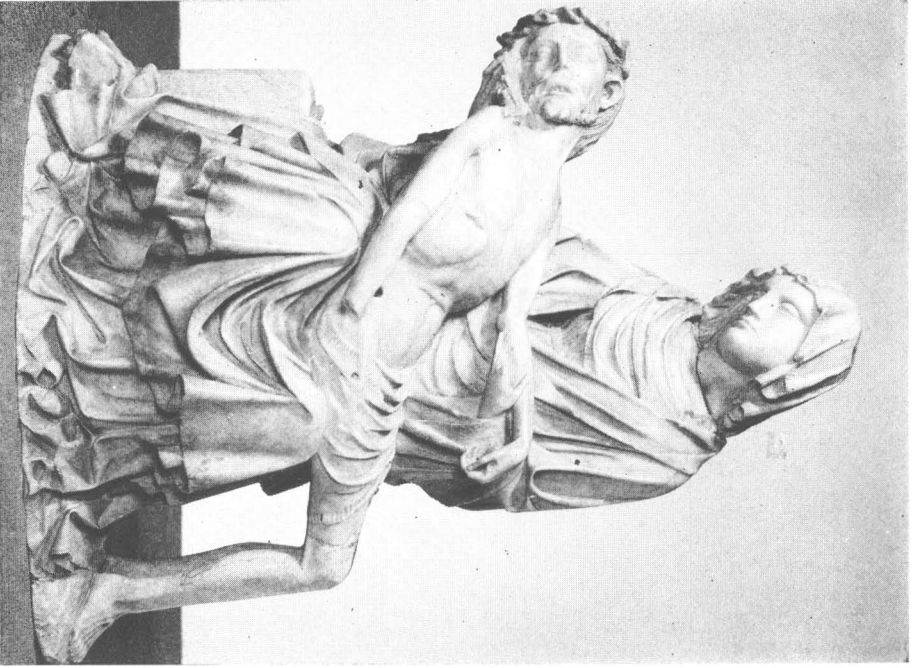
O B R A Z O V Á P Ř Í L O H A



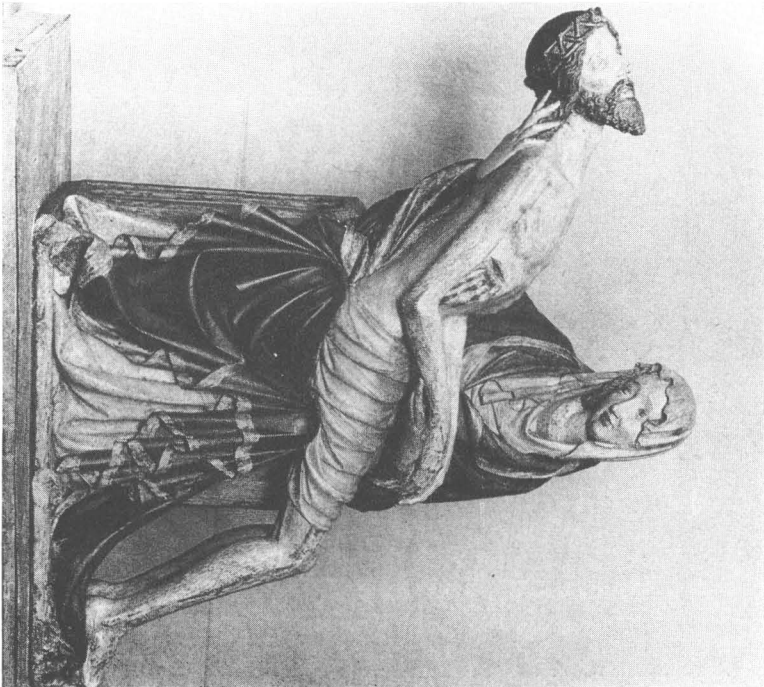
1. *Pietà*. Paris, Musée du Louvre.



2. *Pietà*. Warszawa, Muzeum Narodowe.



3. *Pietà*. London, Victoria and Albert Museum.



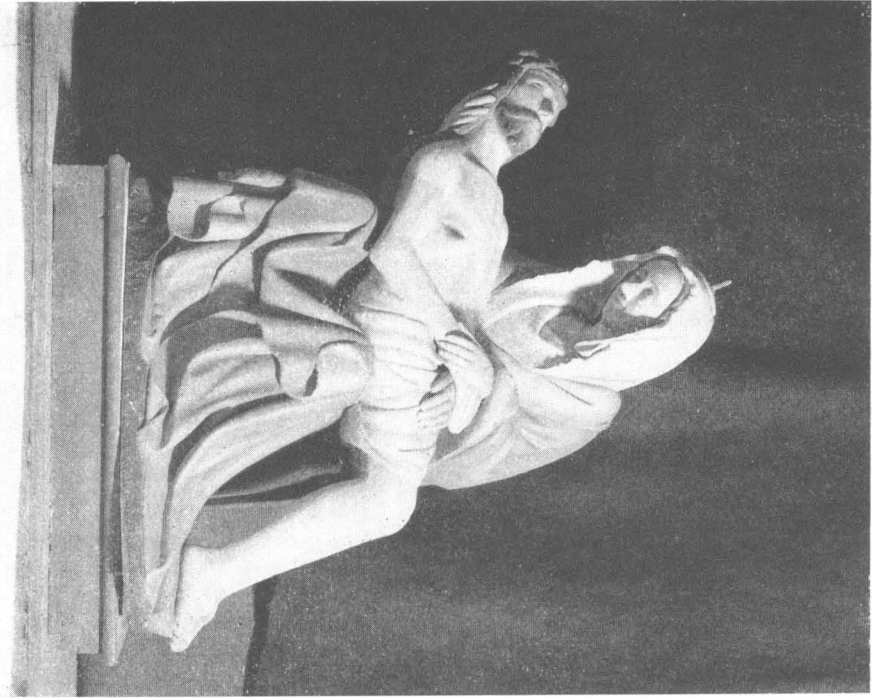
4. *Pietà*. Jihlava, Saint-Ignace.



5. *Pietà*. Oud Zavenaer. Église paroissiale.



6. *Pietà*. Metz, Saint-Euchère.



7. Pietà. Moravský Krumlov, Église des Tous-les-Saints.



8. Pietà. Ravenna, S. Francesco.



9. *Pietà*. Brno, Saint-Michel.



10. *Pietà*. Porto Legnago, Madonna della Salute.



11. *Pietà*. Paris, coll. de la comtesse L. de Luart.



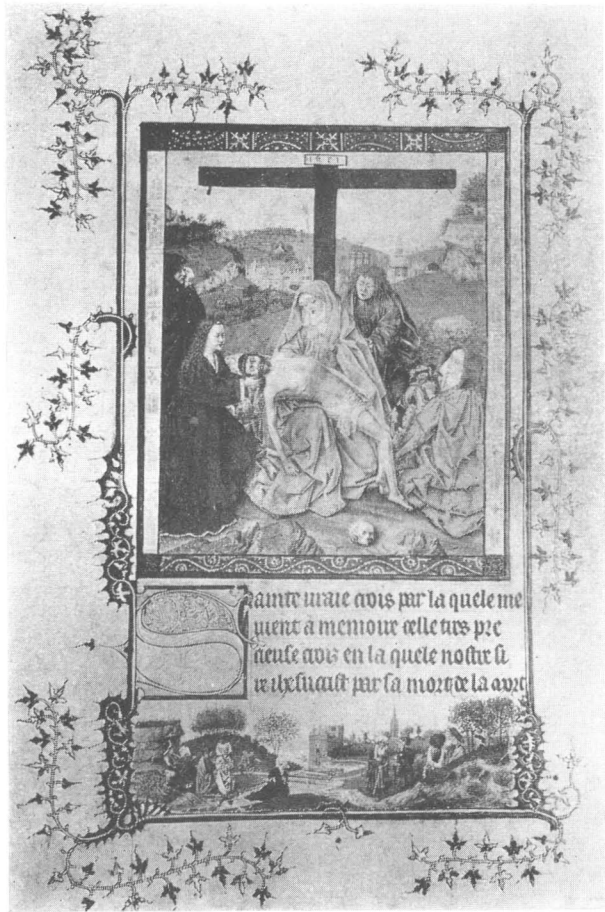
12. Paris, Bibliothèque nationale, lat. 919, fol. 77.



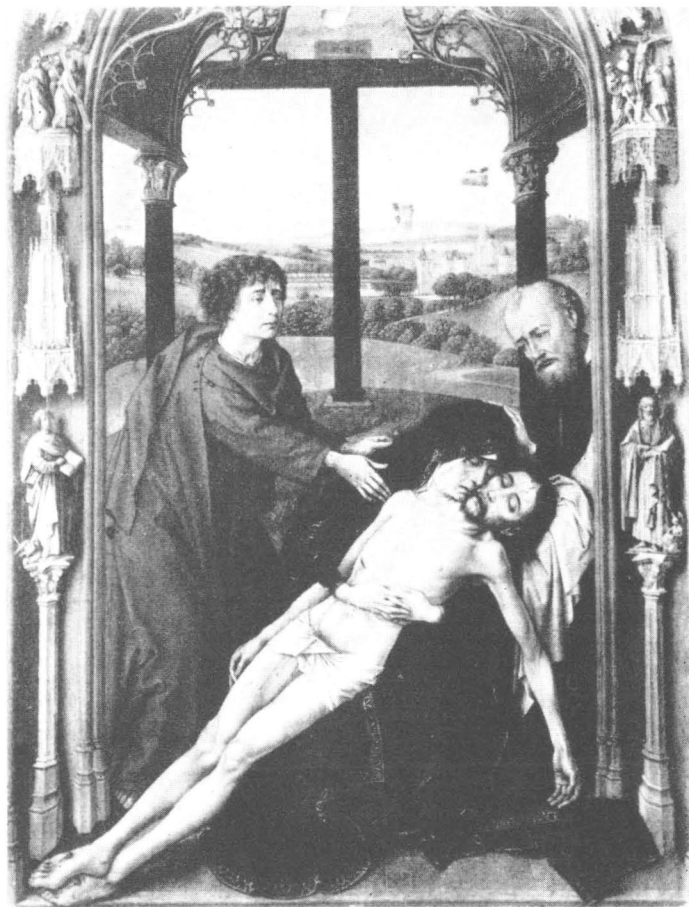
13. Paris, Bibliothèque nationale, nouv. ecq. lat. 3093,
p. 216.



14. Pietà. Frankfurt a. M., Liebighaus.



15. *Pietà*. Heures de Turin, fol. 49v



16. *Pietà*. R. v. d. Weyden, L'autel de Grenade.



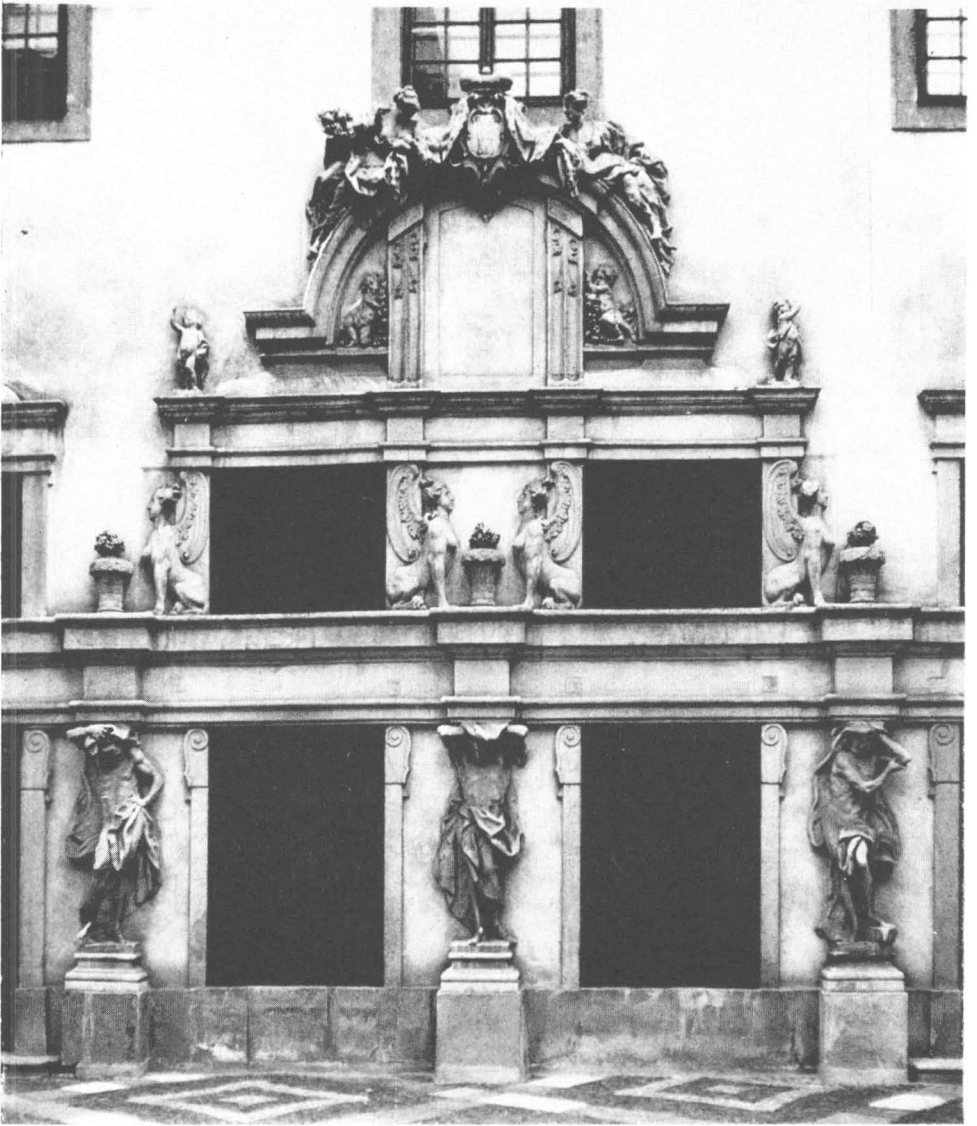
17. Ignatz Lengelacher, *Kinderkopf aus dem Stiegenhaus des Schlosses in Nikolsburg.*



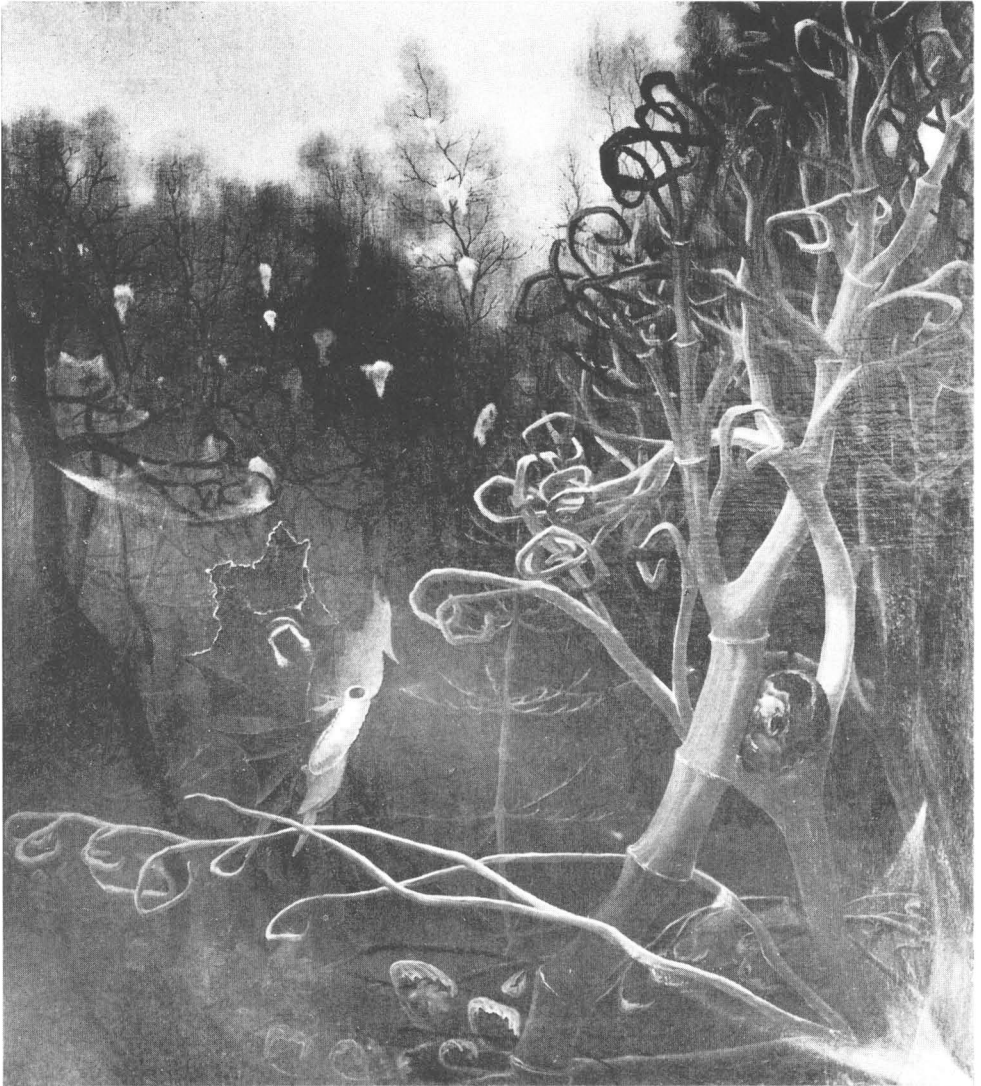
18. Ignatz Lengelacher, *Dreifaltigkeitssäule in Nikolsburg* (Detail).



19. Ignatz Lengelacher, *Dreifaltigkeitssäule in Nikolsburg.*



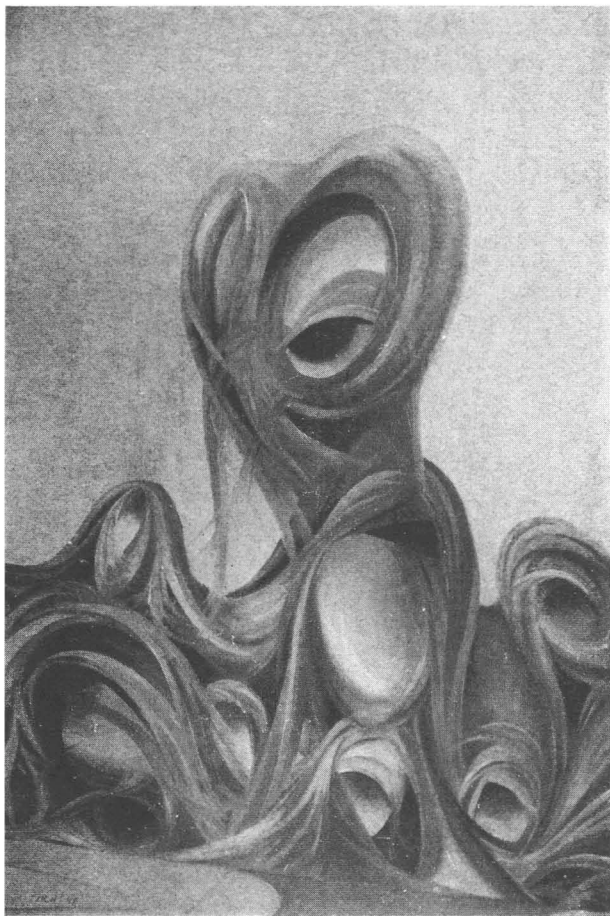
20. Ignatz Lengelacher, Skulpturelle Ausschmückung des Schloßhofes in Nikolsburg



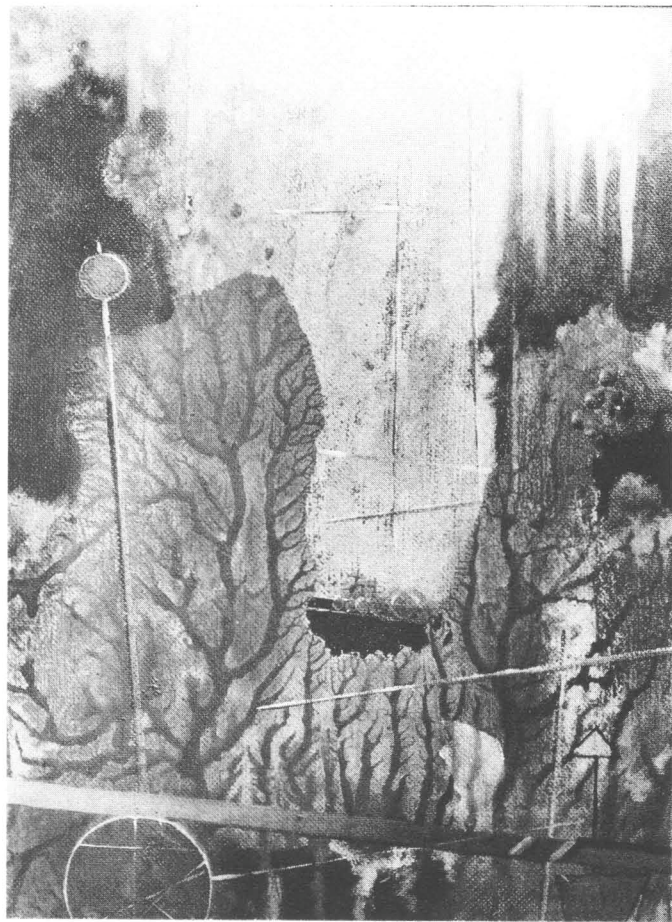
21. Václav Tikal, *Zamořená krajina*. 1945.



22. Václav Tikal, ... a města šilela. 1946.



23. Václav Tikal, *Živly*. 1948.

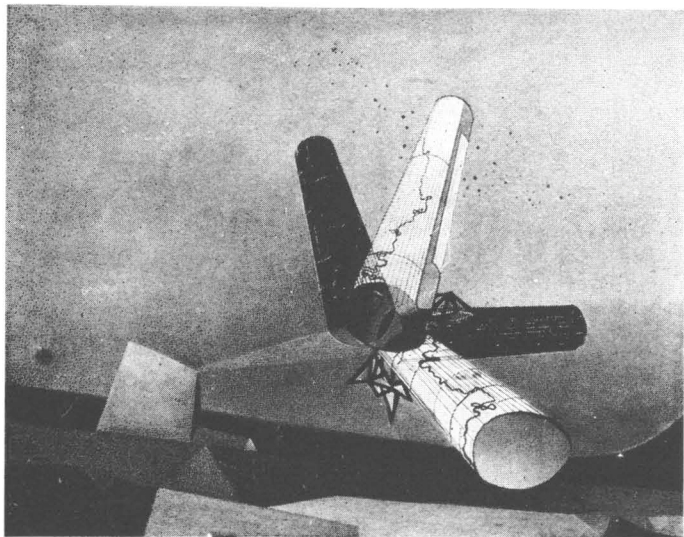


24. Václav Tikal, *Vysílač v lese*. 1948.

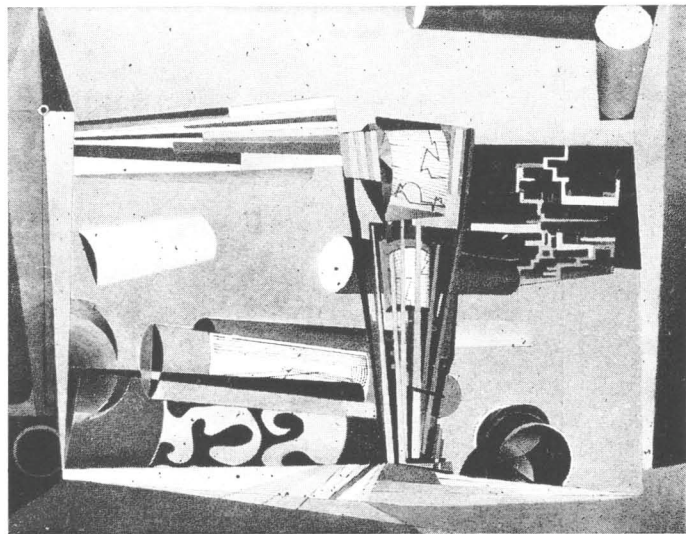




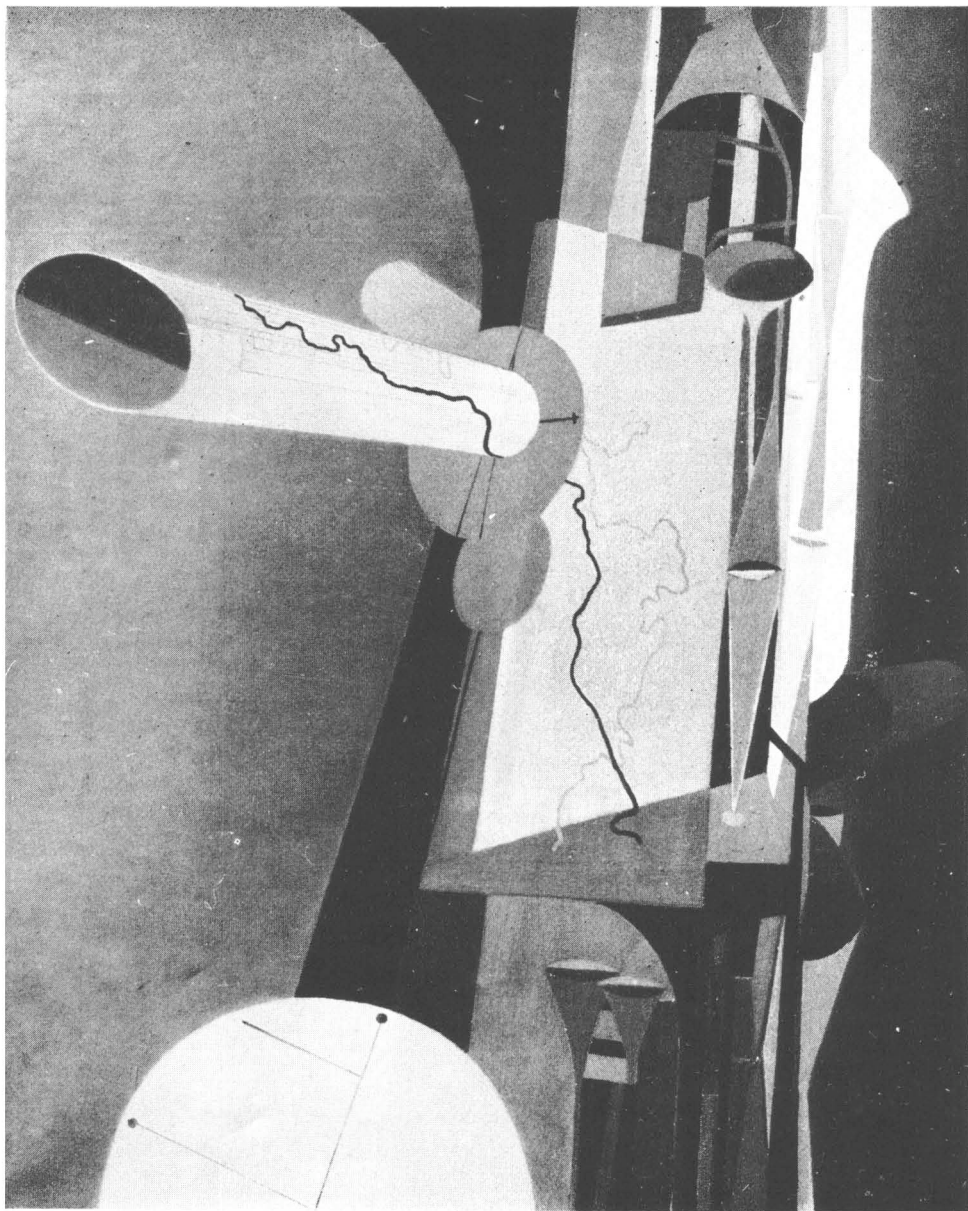
26. Václav Tikal, *Rabi Löw — památce umučených*. 1946.



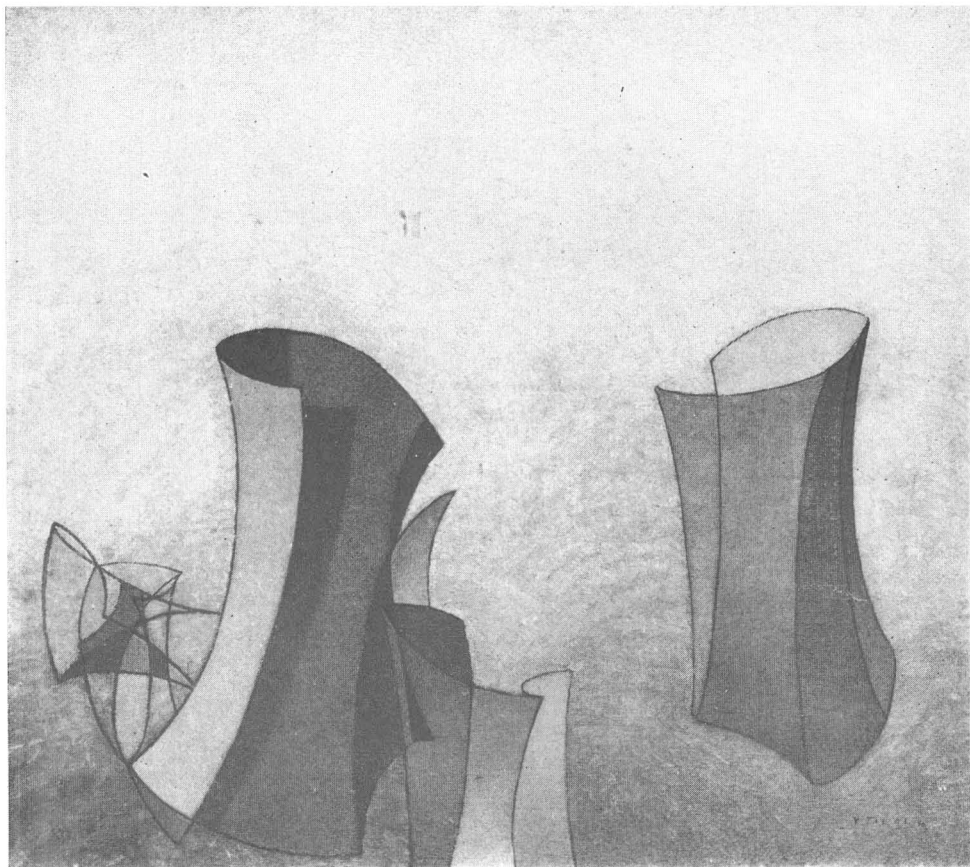
27. Václav Tikal, *Kategorie*. 1946.

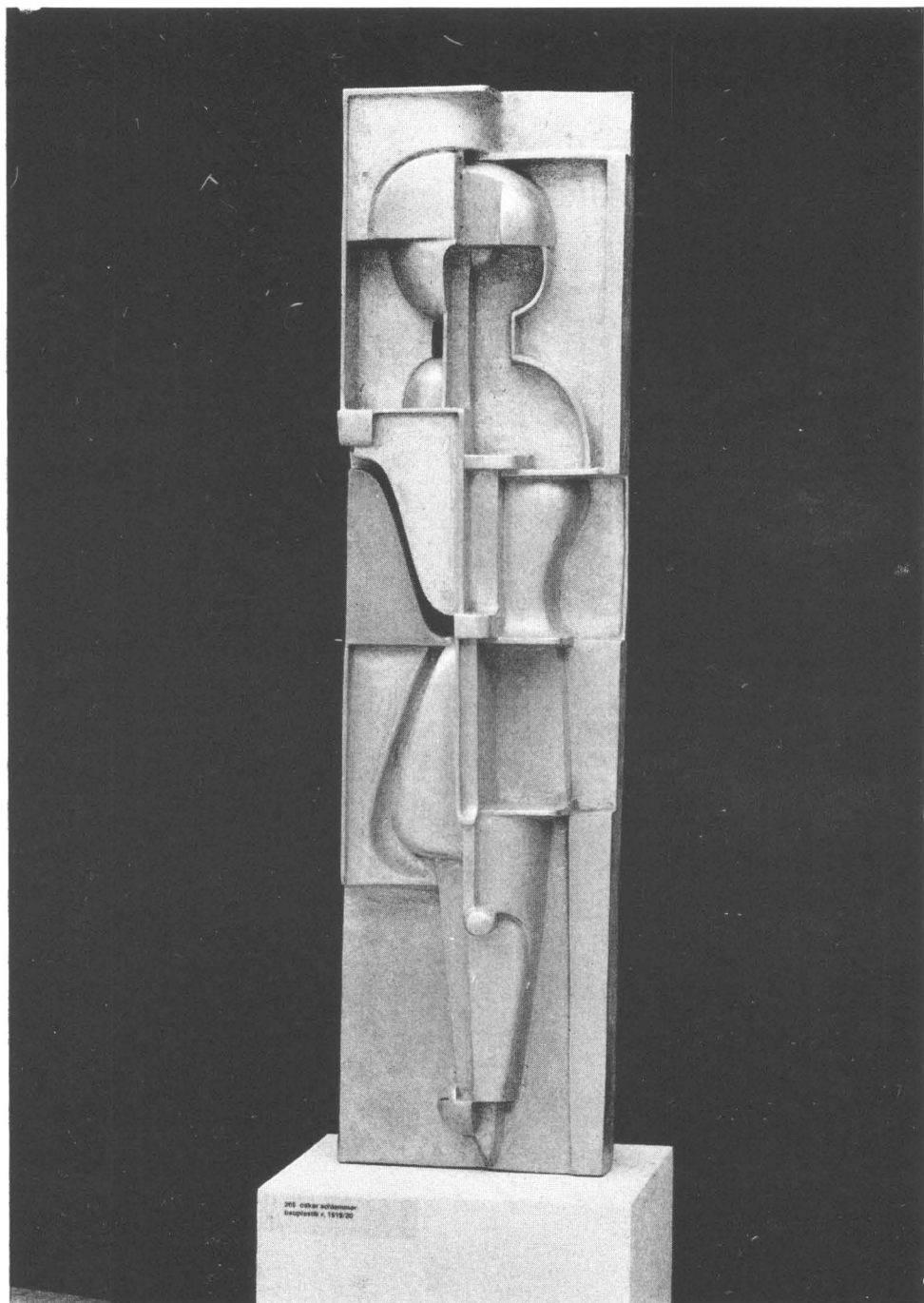


28. Václav Tikal, *Atomové letiště*. 1946.

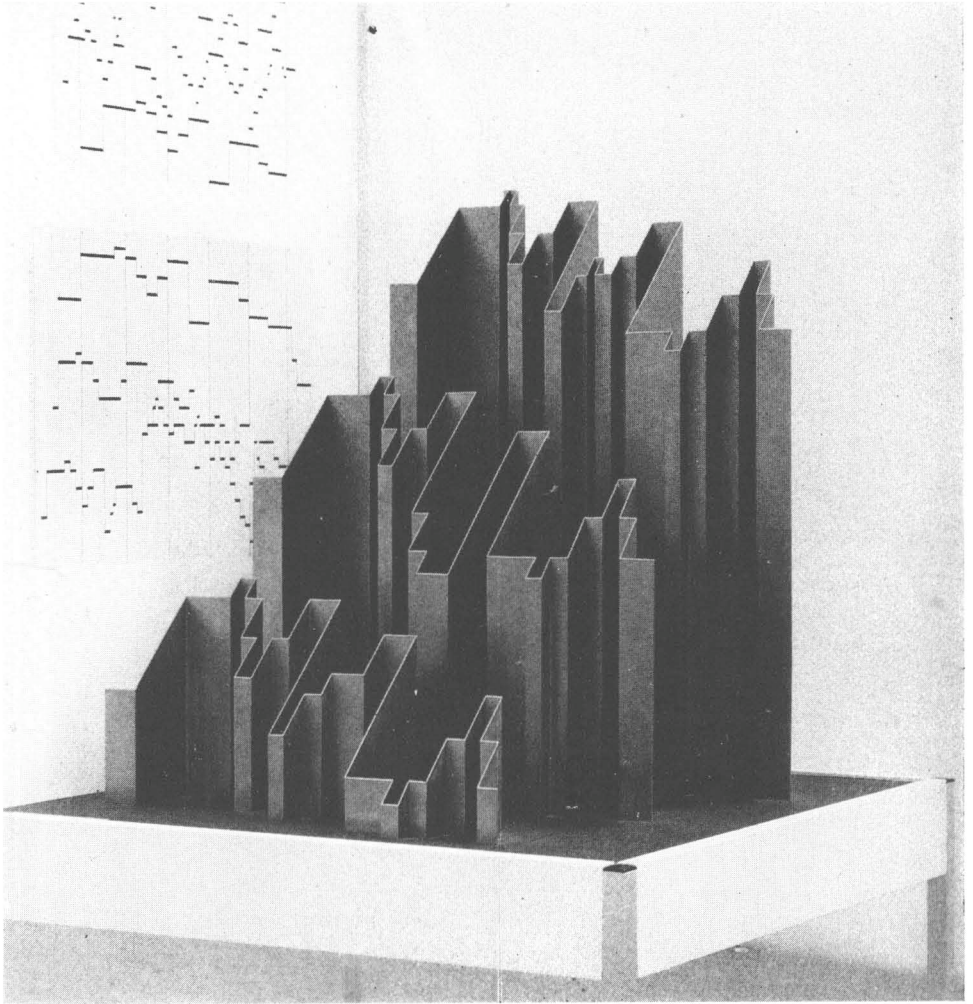


29. Václav Tikal, *Astrofysická věž*. 1947.





31. Oskar Schlemmer, *Bauplastik*. 1919–1920.



32. Heinrich Neugeboren, *Plastische Darstellung der Takte 52–55 der Es-Moll-Fuge von J. S. Bach.* 1928.

