

Pernička, Radko Martin

Tafeln

In: Pernička, Radko Martin. *Die Keramik der älteren römischen Kaiserzeit in Mähren*. Opera Universitatis Purkynianae Brunensis, Facultas philosophica =yd. 1. Brno: Universita J.E. Purkyně, 1966, pp. i-lxvi

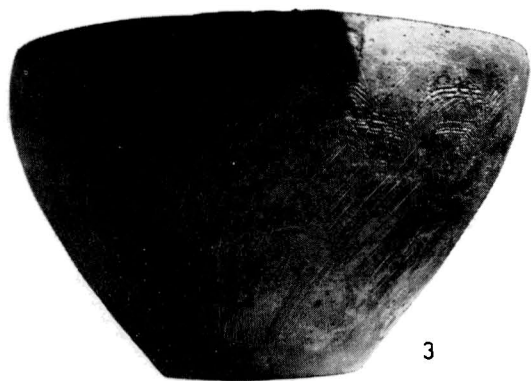
Stable URL (handle): <https://hdl.handle.net/11222.digilib/119797>

Access Date: 28. 11. 2024

Version: 20220831

Terms of use: Digital Library of the Faculty of Arts, Masaryk University provides access to digitized documents strictly for personal use, unless otherwise specified.

TAFELN



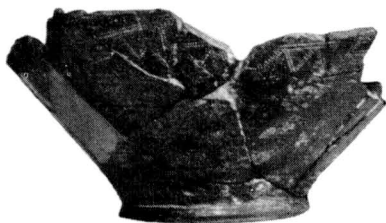
Bzene I, Einzelfund (1) und Brandgrab (2). *Uherčice*, Brandgrab 1 (4-7) und Brandgrab 2 (3). — Samml. MM Brno (1,2), M Židlochovice (3-7). — M. 1 : 4.



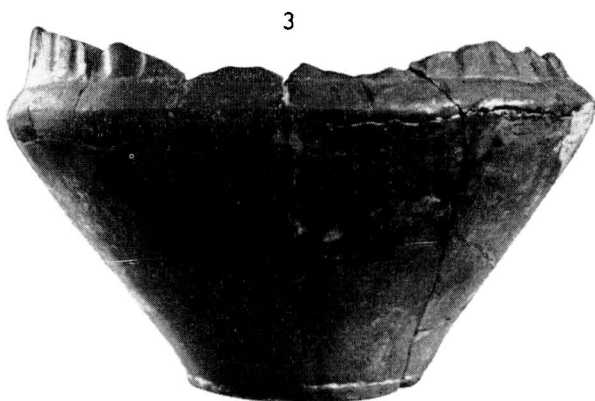
Breclav I, Brandgrab (1-6). *Vracov*, Brandgrab (7-16). — Samml. MM Brno (1-16). — M. 1 : 4 (Tongefäße 6,16), 1 : 3 (eiserne Messer 1,2 und Bruchstücke der Bronzegefäße 3), etwa 1 : 2 (bronzene Gegenstände 4,5,7-15).



1



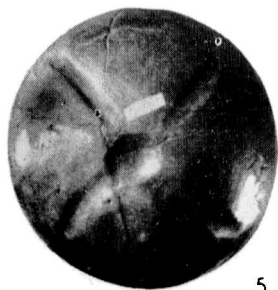
2



3



4



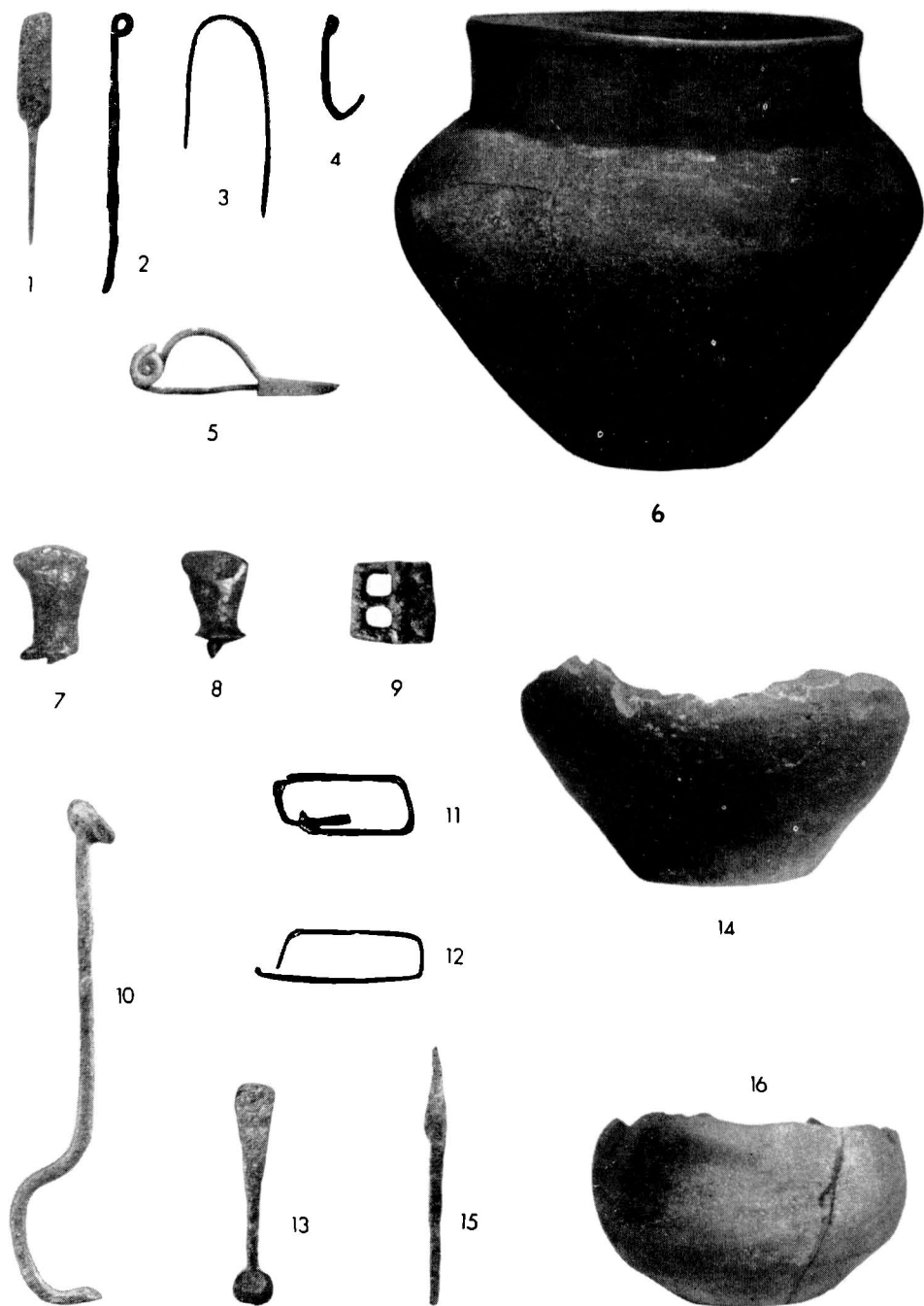
5



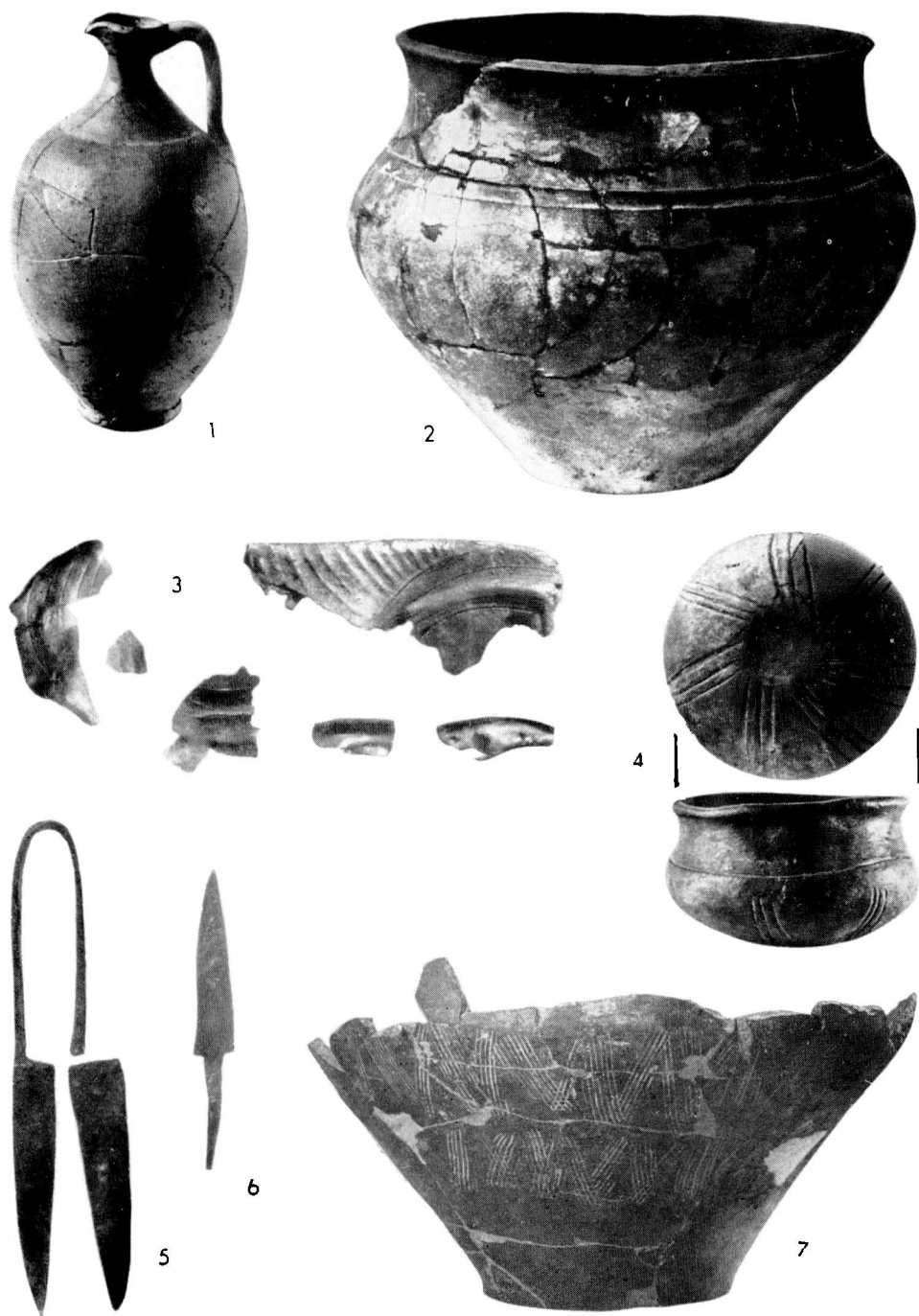
6

Měnín I, wohl aus zerstörten Gräbern (1,4). *Skoronice I*, wahrscheinlich aus einem Brandgrab (2). *Bučovice*, Brandgrab (3). *Mikulov I*, aus zerstörten Gräbern (5,6). — Samml. MM Brno (1-4), M Mikulov (5,6). — M. 1 : 4 (Tongefäße 1,2,3,5,6), fast 1 : 3 (br. Gesichtsattache 4).

IV

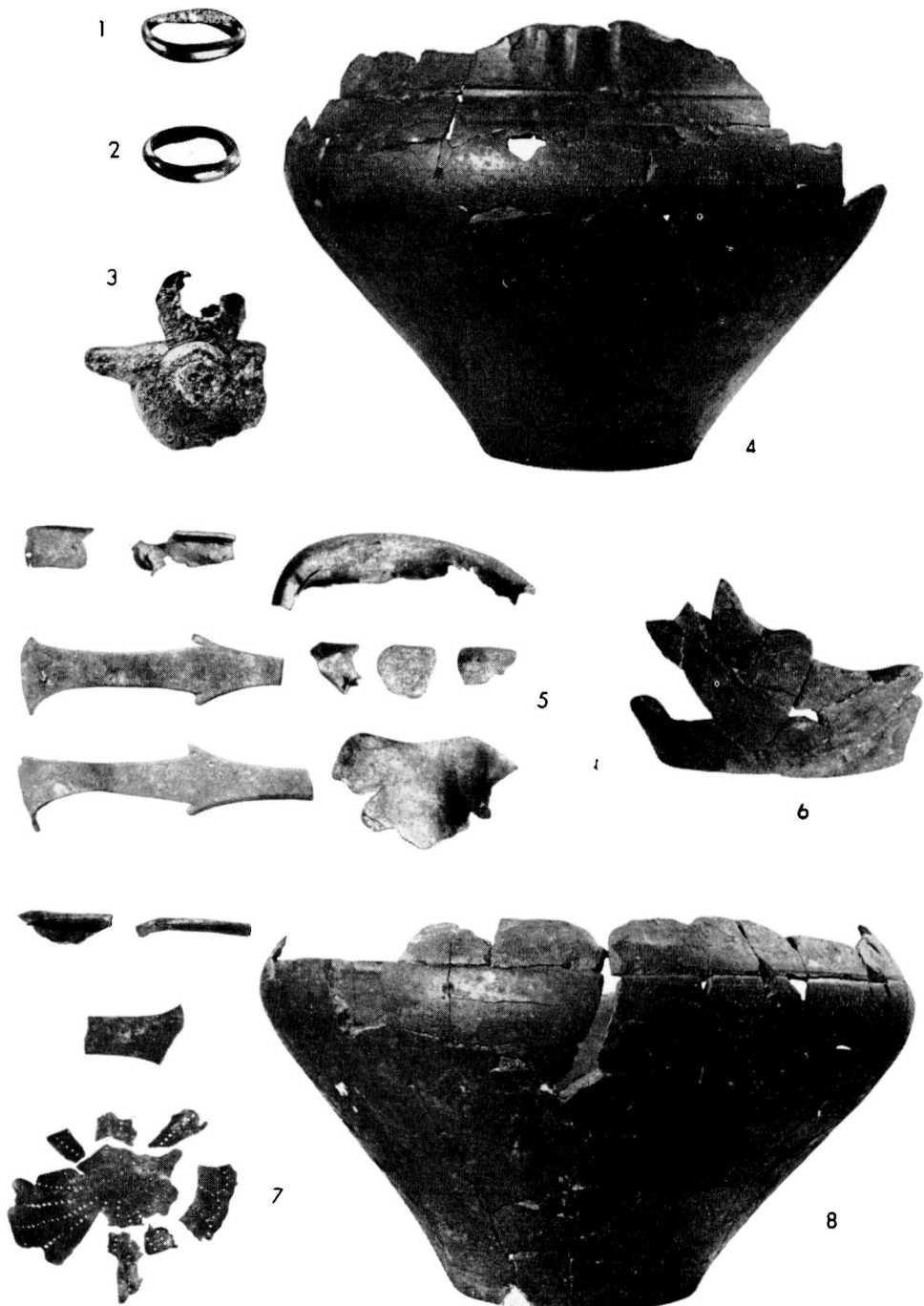


Sitbovice I. aus älteren Brandgräberfunden: vielleicht Grab 1 (1-3,5,6), Grab 2 (4,7-14) und Grab 3 (15,16). — Samml. MM Brno (1-16). — M. 1 : 4 (Tongefässe 6,14,16), 1 : 3 (eis. Gegenstände 1,2,4,9-13,15), 1 : 2 (br. Nadel 3, br. Fibel 5, eis. Fibeln 7,8).



Sitbořice I, Brandgrab 6 (1-6) und Brandgrab 7 (7). — Samml. KP UJEP Brno (1-7). — M.
 1 : 4 (Tongefäße 1,2,4,7), 1 : 3 (Metallgegenstände: 3 aus Bronze, 5-6 aus Eisen).

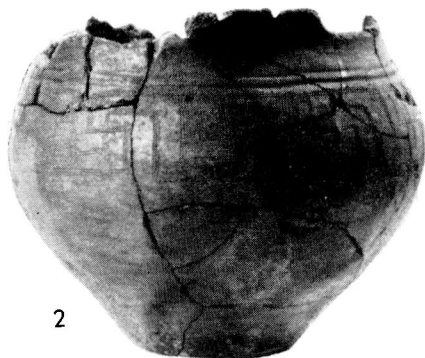
VI



Sitbořice I, Brandgrab 8 (1-4), Brandgrab 10 (5,6) und Brandgrab 12 (7,8). — Samml. KP UJEP Brno (1-8). — M. 1 : 4 (Tongefäße 4,6,8), 1 : 3 (Bruchstücke der Bronzegefäße 5,7), 1 : 2 (goldene Umfassungen 1,2 und br. Gesichtsattache 3).



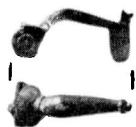
1



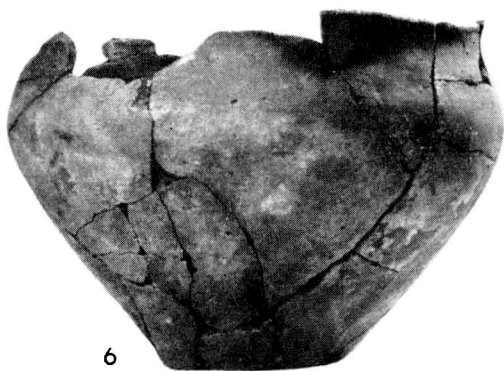
2



3



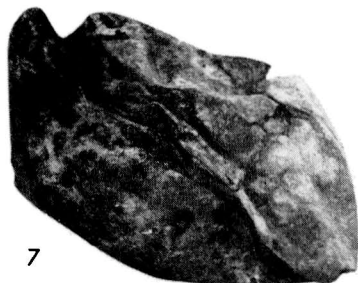
4



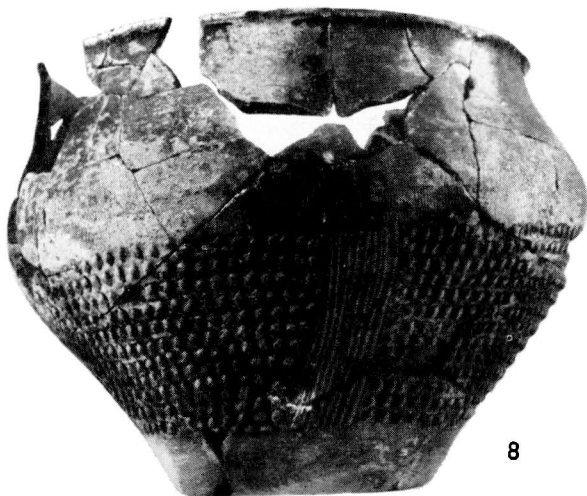
6



5

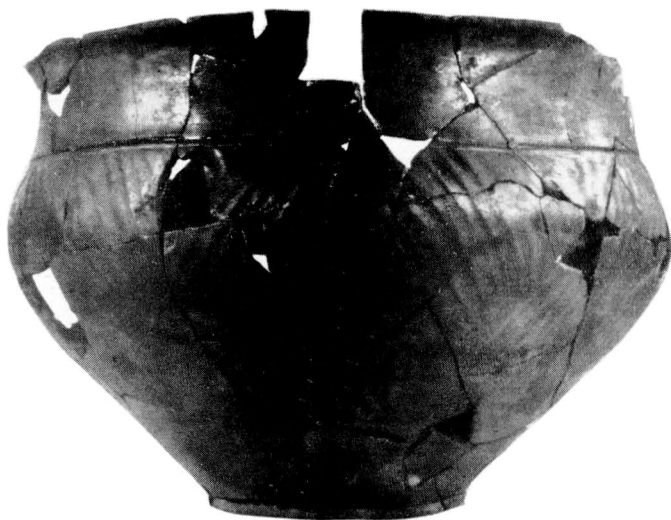


7

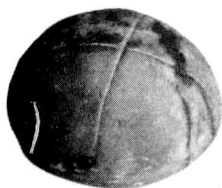


8

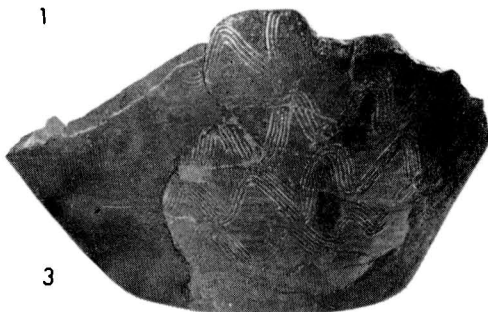
Sitbořice I, Brandgrab 13 (1), Brandgrab 14 (2,3), Brandgrab 19 (7,8) und Brandgrab 20 (4-6). — Samml. KP UJEP Brno (1-8). — M. 1 : 4 (Tongefäße 1,2,6,8 und Bronzekessel 7), 1 : 3 (Bruchstücke der Bronzegefäße 5), 1 : 2 (Fibeln: 3 aus Eisen, 4 aus Bronze).



1



2



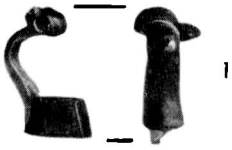
3



4



5



1

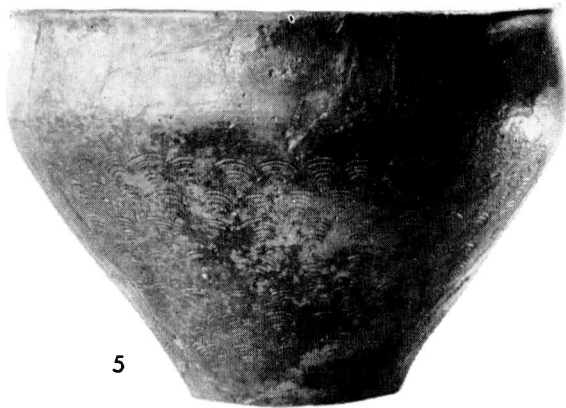
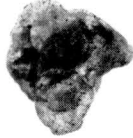
4



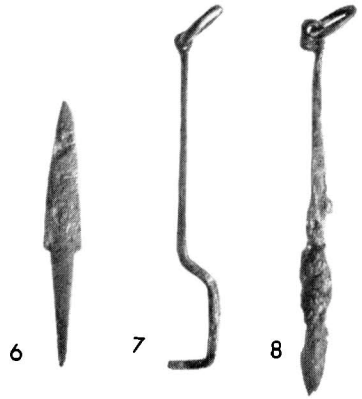
2



3



5



6

7

8



9



10



11

Mušov IV, Brandgrab (1-4,6-8). *Mikulov I*, aus zerstörten Brandgräbern (5,11). *Velatice*, aus zerstörten Gräbern (9,10). — Samml. M Mikulov (1-8,11), MM Brno (9,10). — M. 1 : 4 (Tongefäße 4,5,9,10,11), 1 : 3 (eis. Geräte 6-8), 1 : 2 (eis. Fibel 1 und Glasstücke 2,3).



Drásov, vermischte Funde (1-5). Bedřichovice I, aus einem Siedlungsobjekt (6-8). Ladná, Siedlungsfunde (9-13). — Samml. MM Brno (1-13). — M. 1 : 4 (Tongefäße 3-12 und versilbertes Bronzebecken 13), 1 : 3 (Bronzegefäßfragmente 1 und eis. Messer 2).



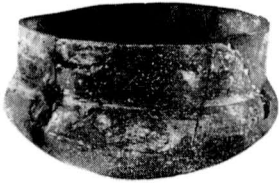
1



2



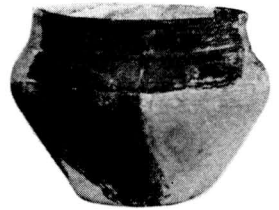
3



4



5



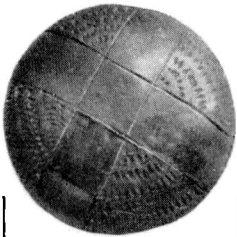
6



7



8



9



10



Siedlungskeramik: Blažovice (1), Chvalkovice (6), Hrušky (7), Křižanovice I (8), Vicemilice (2-5,10), unbekannte Fundstelle (9). — Samml. MM Brno (1-10). — M: 1 : 4.



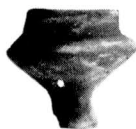
1



2



3



4



5



6



7



8



9



10



11



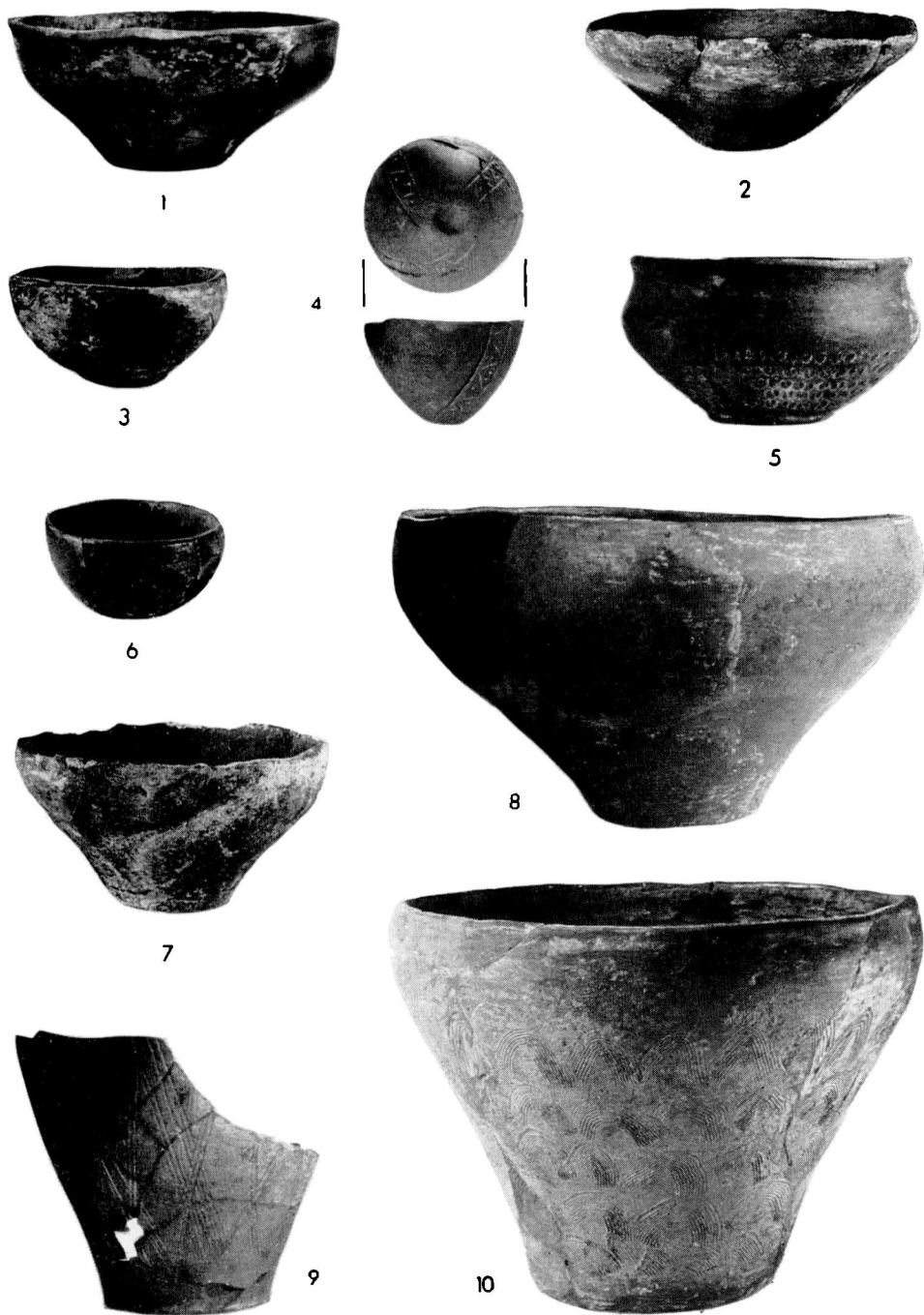
12



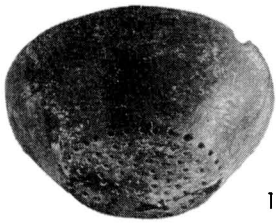
13



14



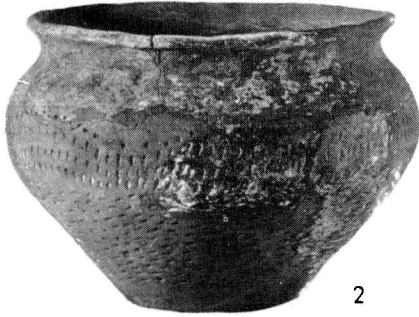
Siedlungskeramik: Černčín (5), Hrušky (8,10), Jaroměřice nad Rokytnou II (9), Křižanovice I (1), Syrovice (4), Vicemilice (2,3,6,7). — Samml. MM Brno (1-10). — M. 1 : 4.



1



3



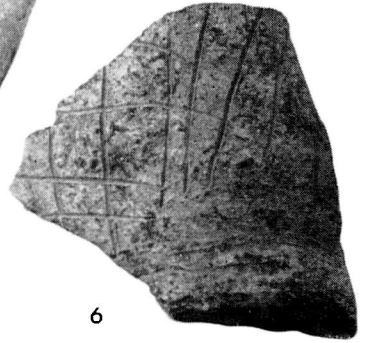
2



4



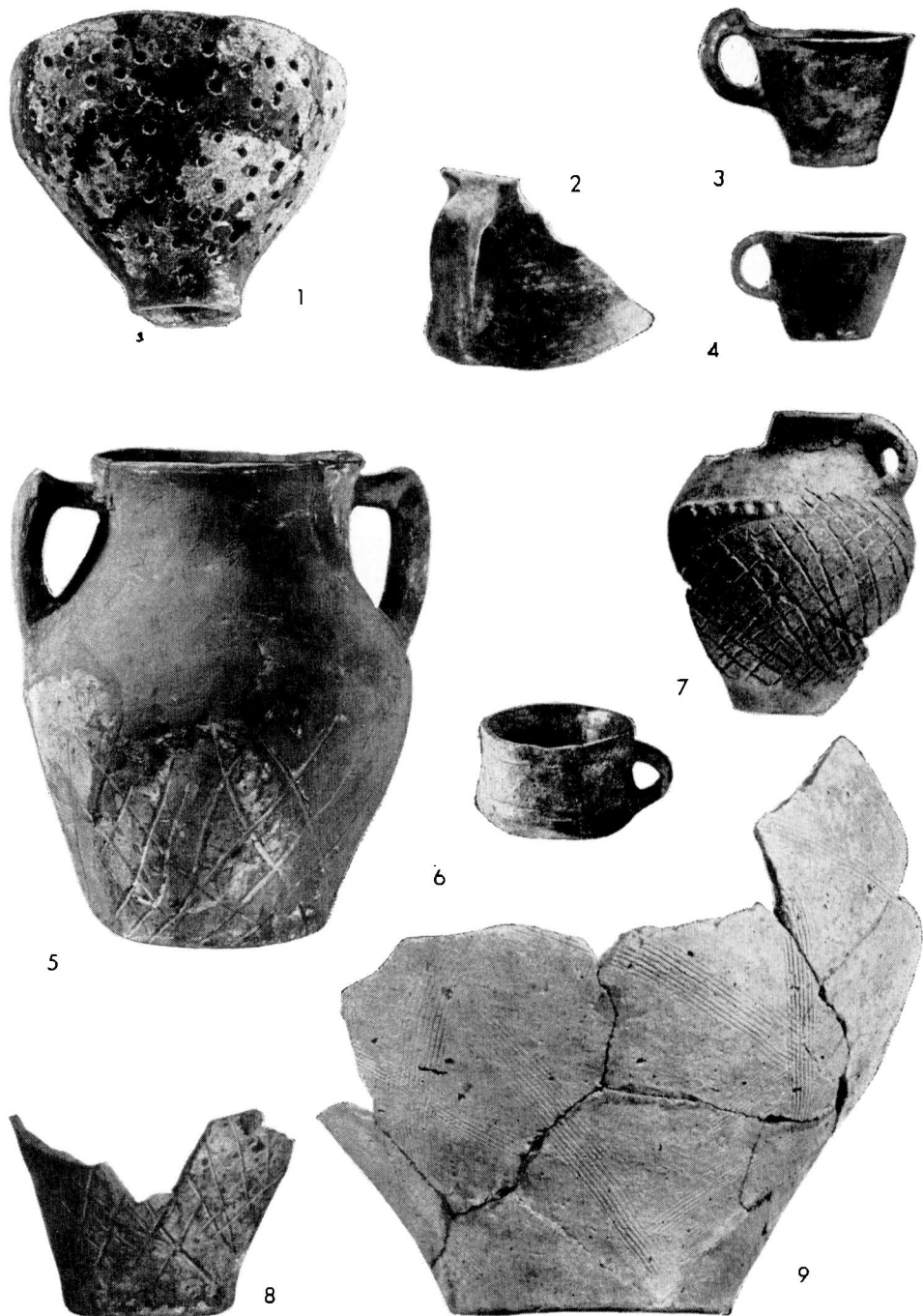
5



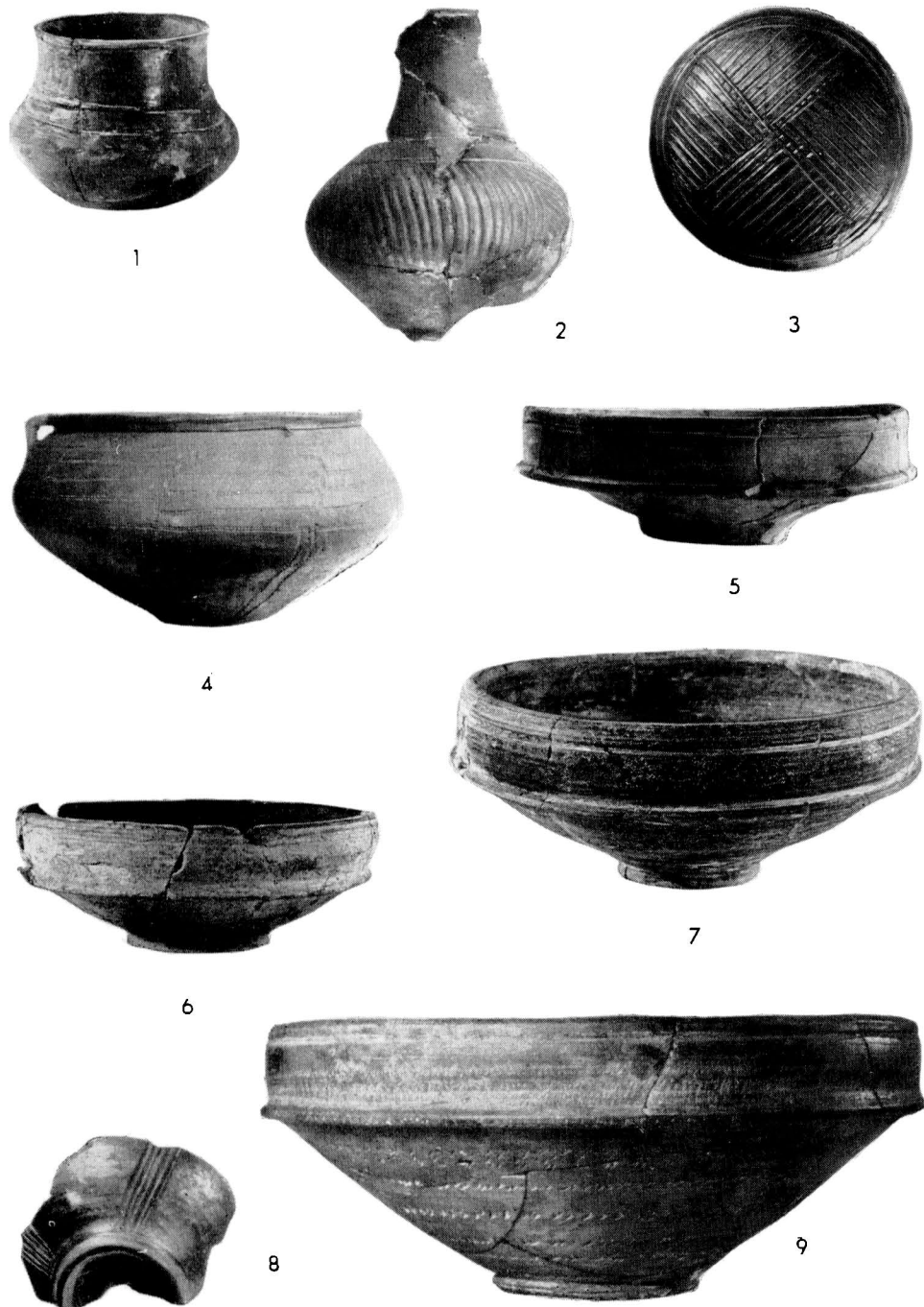
6



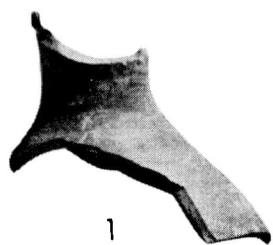
Siedlungskeramik: *Tvarožná I* (3), *Tvarožná II* (2,4), *Vicemilice* (1,6), *Vlkoš* (5). — Samml. MM Brno (1-6). — M. 1 : 4.



Sídlungskeramik: Chyalkovice (8), Hrušky (3,4), Marešy (7), Moravský Krumlov (9), Tvarožná II (2), Vícemilice (1,5,6). — Samml. MM Brno (1-8), M Moravský Krumlov (9). — M. 1 : 4.



Siedlungskeramik: Mušov I (2), Nejdeč (3), Tištín (5), Vicemilice (1,6,7,9), Vlkoš (8), unbekannte Fundstelle (4). — Samml. MM Brno (1,2,4,6-9), M Mikulov (3), M Přerov (5). — M. 1 : 4.



1



2



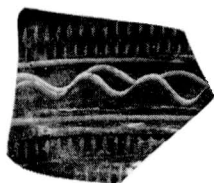
3



5



4



7



6



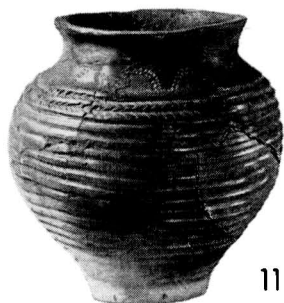
8



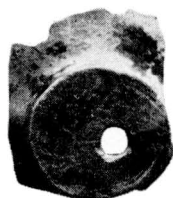
9



10



11

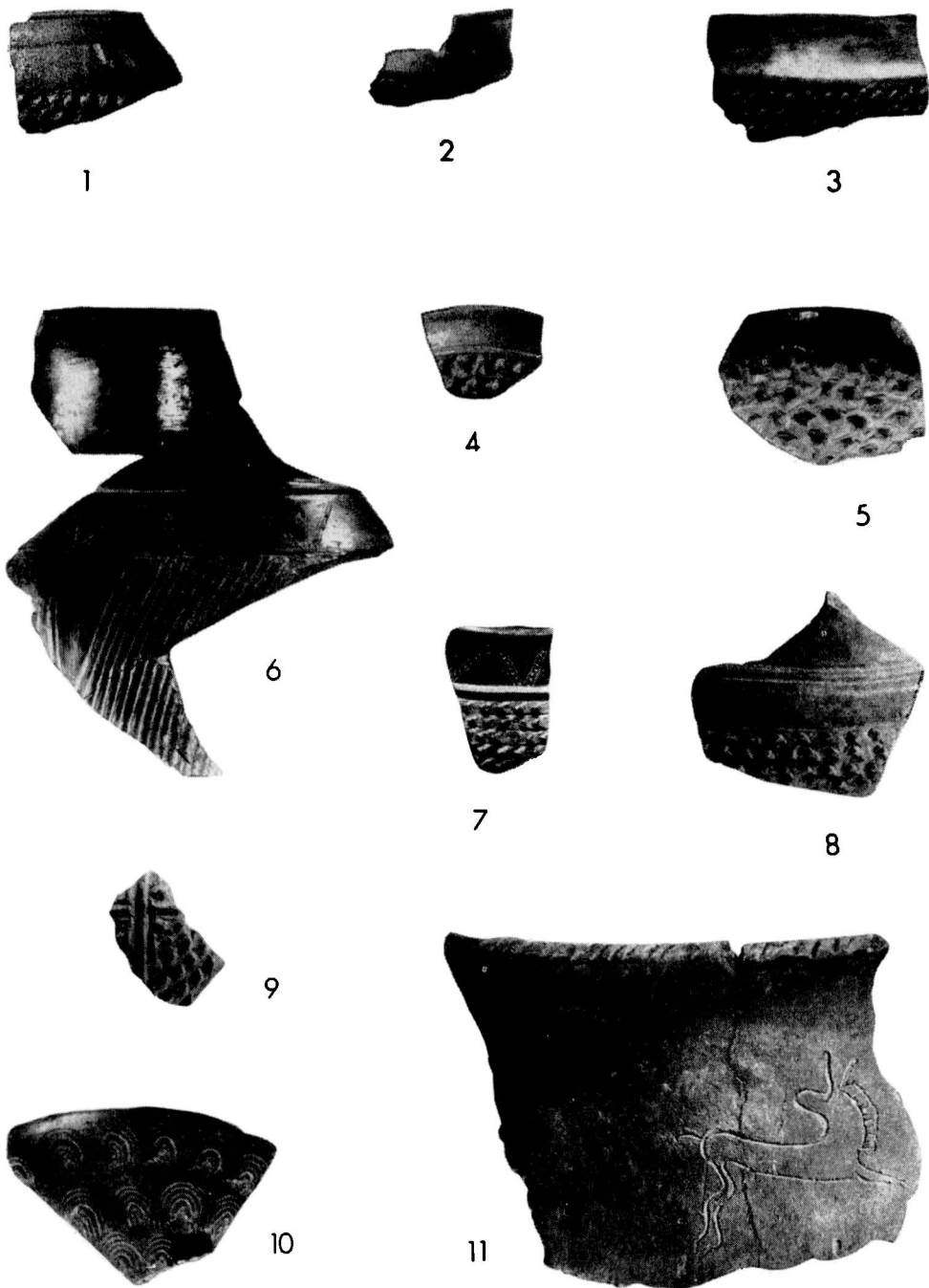


12

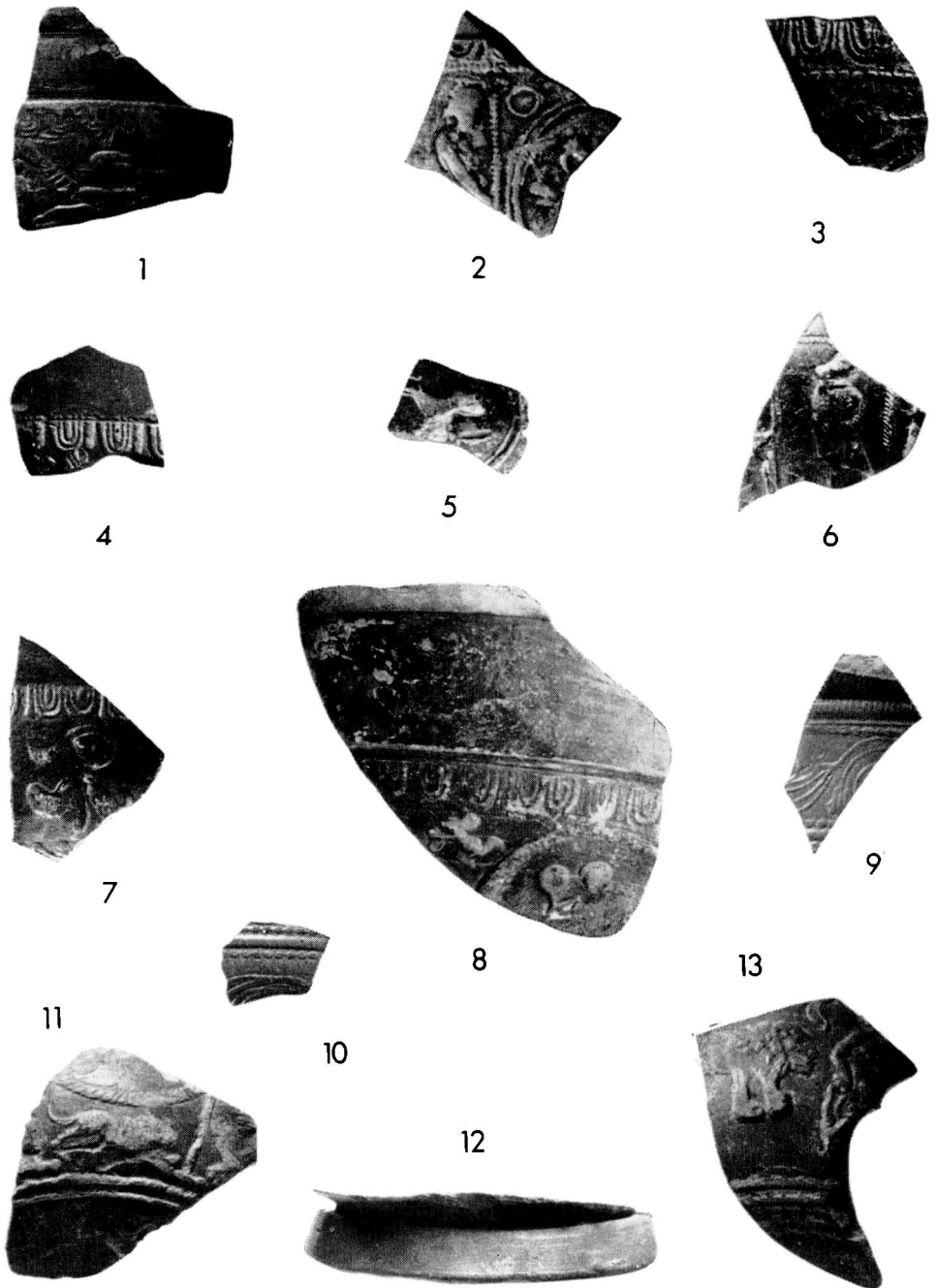


13

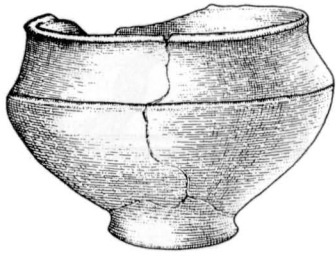
Verschiedene keramische Funde: *Bzenec II* (1), *Chornice* (4), *Hrubčice* (3,9), *Mušov II* (12), *Nejdek* (7), *Petrov* (5), *Valtice* (2), *Vicemilice* (8,10,11), *Vitovice* (13), *Vrchoslavice* (6). — Samml. MM Brno (1,5,6,8-11,13), M Mikulov (2,7,12), M Moravská Třebová (4), M Prostějov (3). — M. 1 : 3.



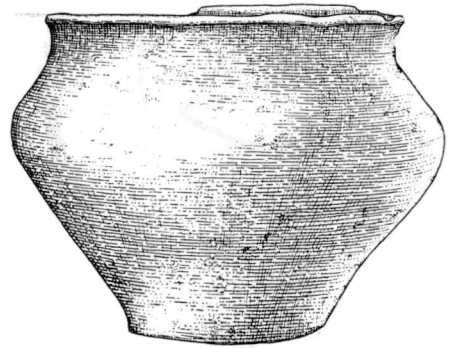
Verschiedene keramische Funde: *Bezměřov* (5), *Brodek u Prostějova* (1), *Držovice* (4), *Mistřín* (8), *Mušov II* (7), *Nejdek* (3), *Prosiměřice I* (6), *Přikazy* (11), *Tištín* (10), *Vrchoslavice* (9), *Zerůvky* (2). — Samml. MM Brno (8,9,11), KP UJEP Brno (6), M Mikulov (3,7), M Prostějov (1,2,4), M Přerov (5,10). — M. 1 : 3.



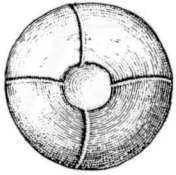
Sigillata-Funde: *Chrlice* (1,9-11), *Dubňany* (8), *Nejdek* (6,12), *Staré Hvězdlice* (3), *Šitbořice I* (2), *Těšany* (13), *Vlčnov I* (5,7), *unbekannte Fundstelle* (4). — Samml. MM Brno (1,3,5,7-11, 13), KP UJEP Brno (2), M Mikulov (4,6,12). — M. 1 : 2.



1



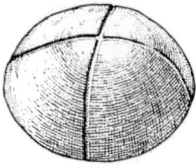
2



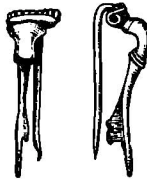
5



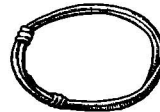
3



6



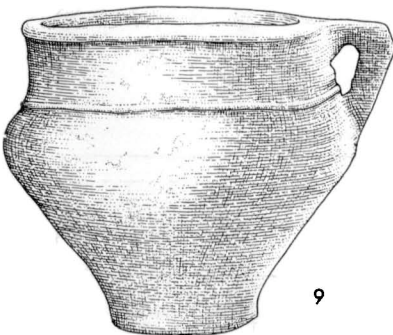
4



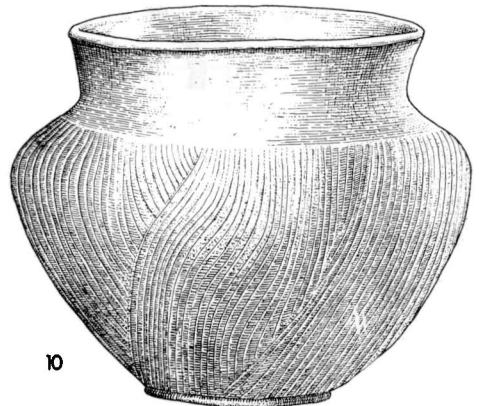
7



8

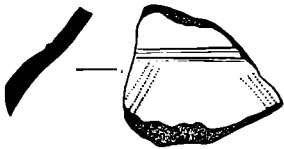


9

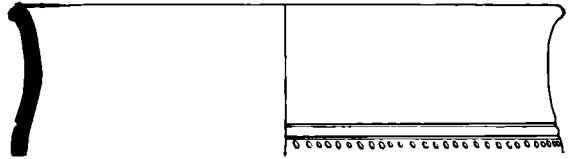


10

Jaroměřice nad Rokytnou I, Brandgrab (1). *Nedakonice I*, Funde aus Brandgräbern 5, 8 und 10 (2,4,3). *Zeletice*, Funde aus Brandgräbern 1 und 2 (5-10). — Samml. MM Brno (6,9), M Uherské Hradiště (2-4), M Znojmo (1); verschollen (5,7,8,10). — M. etwa 1 : 4,3 (Tongefäße 1,2,5,6,9,10), etwa 1 : 3 (3,7,8 aus Eisen, 4 aus Bronze). [2-4 nach V. Hrubý, 5 und 7-10 nach I. L. Červinka.]



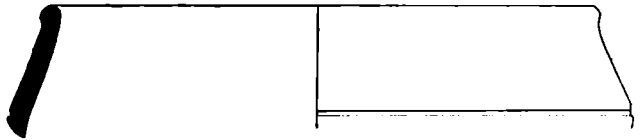
1



2



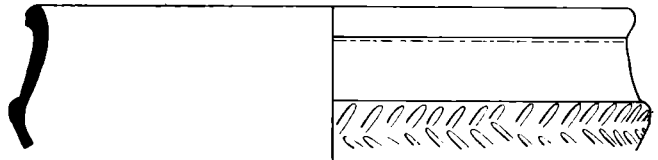
3



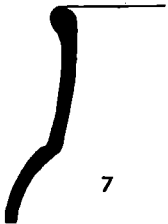
4



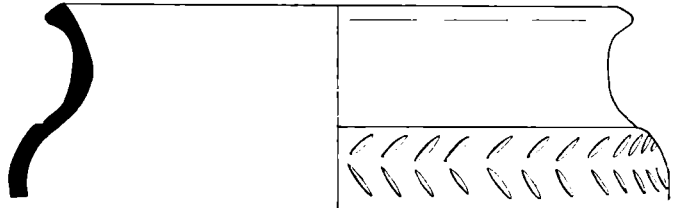
5



6



7

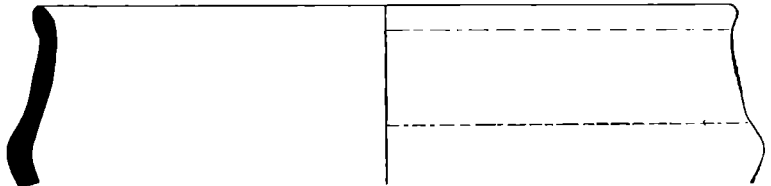


8

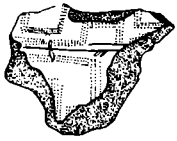
10



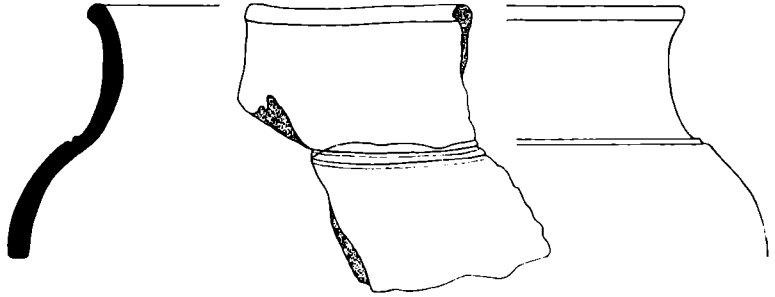
9



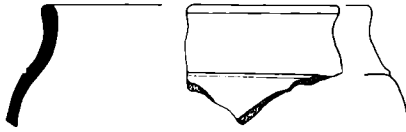
Schüsselformen: Drásov (7), Hrubčice (3), Kojetín, Bez. Přerov (1), Prosiměřice I (4), Vicevilice (2,5,6,8,10), Vlčnov I (9). — Samml. MM Brno (1-3,5-10), KP UJEP Brno (4). — M. 1 : 3.



1



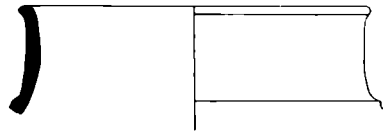
2



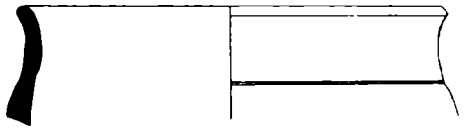
3



4



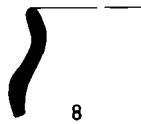
5



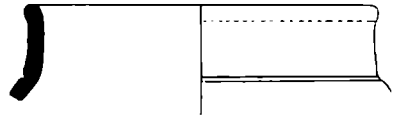
6



7



8



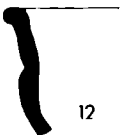
9



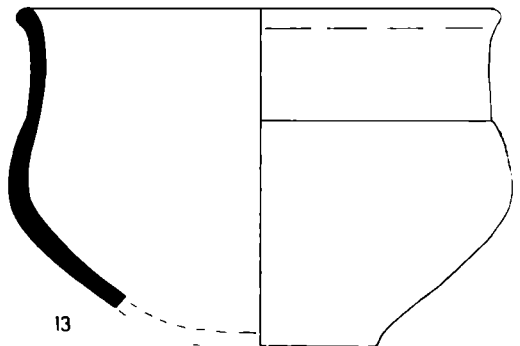
10



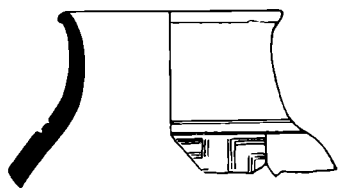
11



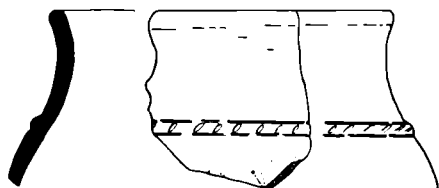
12



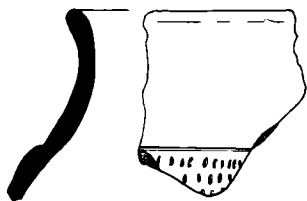
13



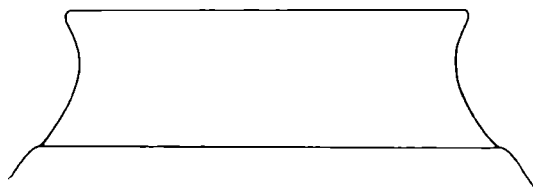
1



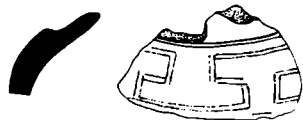
2



3



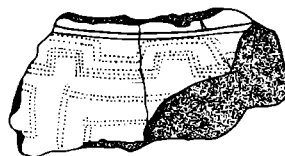
4



5



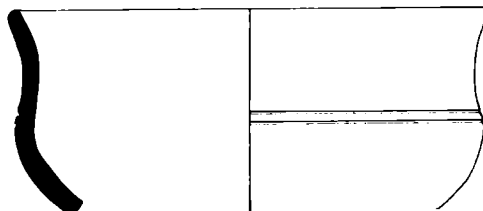
6



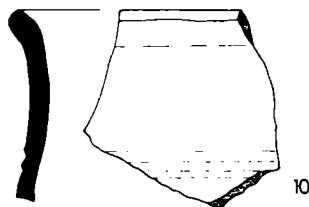
7



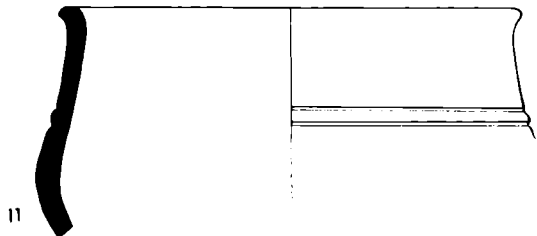
8



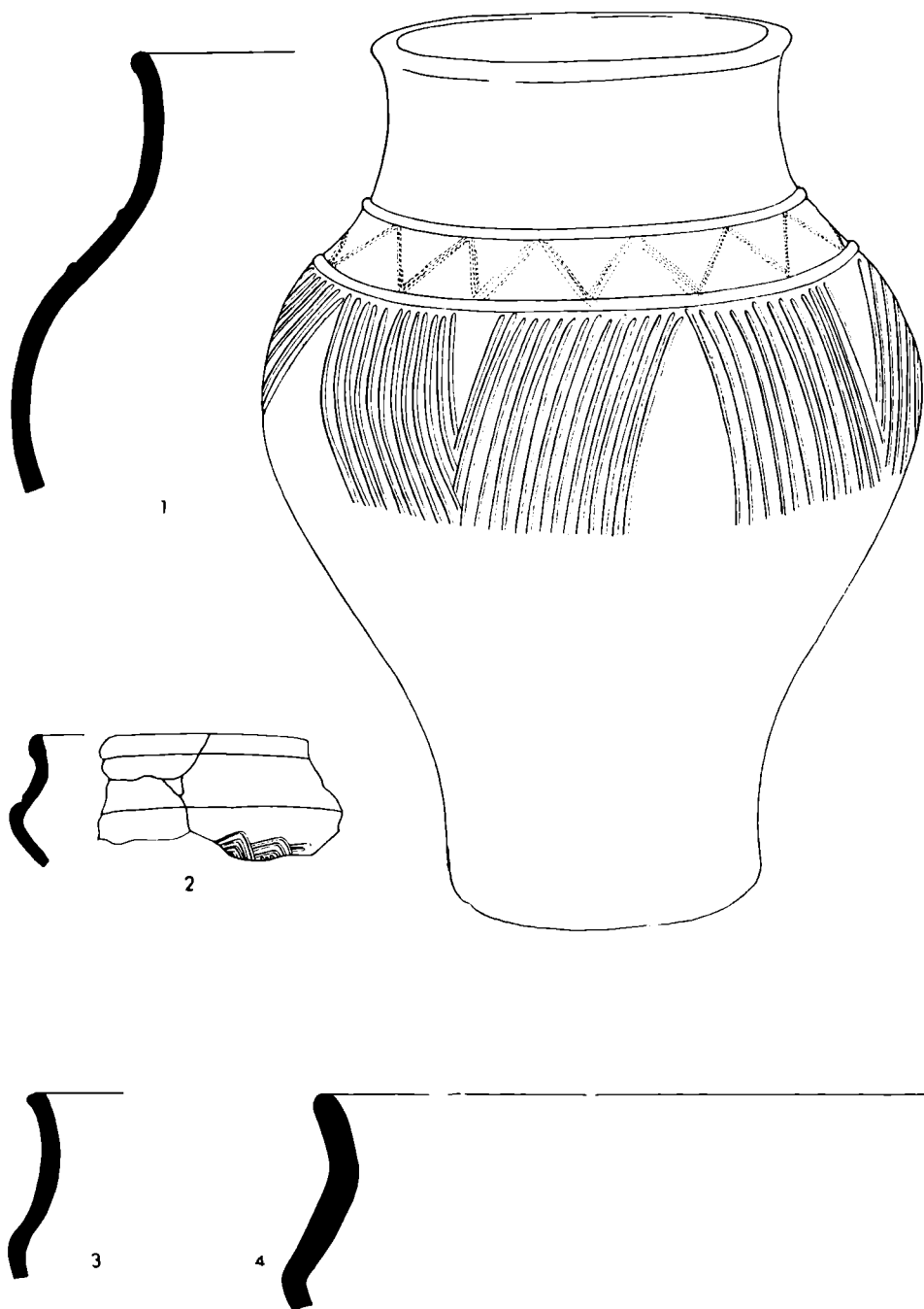
9



10



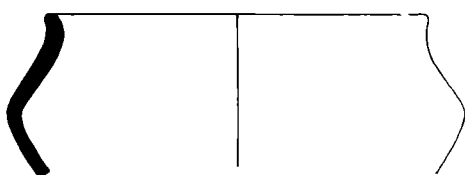
11



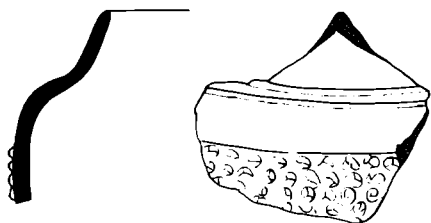
Vasenform u. a.: *Prosiměřice I* (1), *Uherský Brod I* (2), *Vicemilice* (3,4). — Samml. KP UJEP Brno (1), MM Brno (3,4), M Uherský Brod (2). — M. 1 : 3. [2 nach Jan Pavelčík.]



1



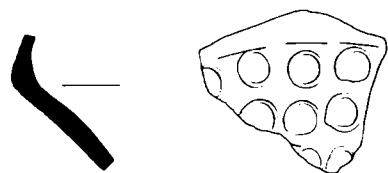
2



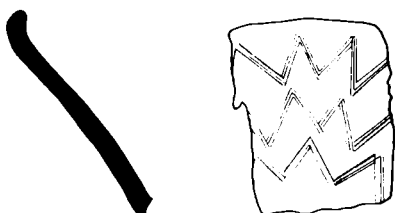
3



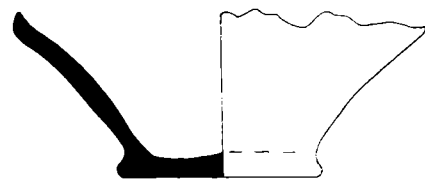
4



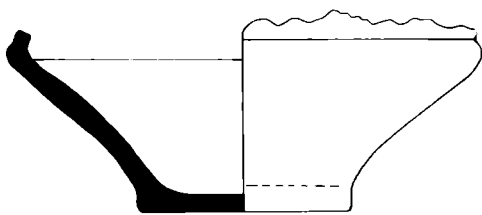
5



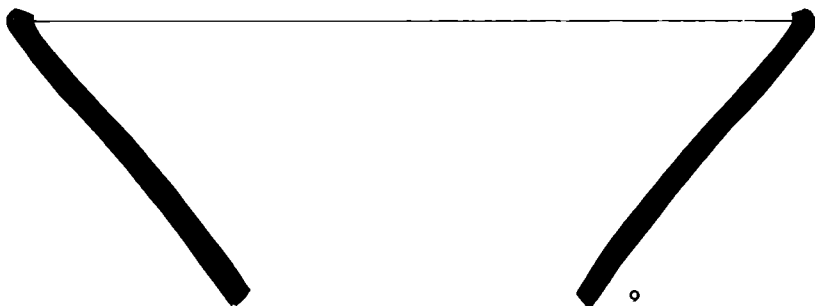
6



7

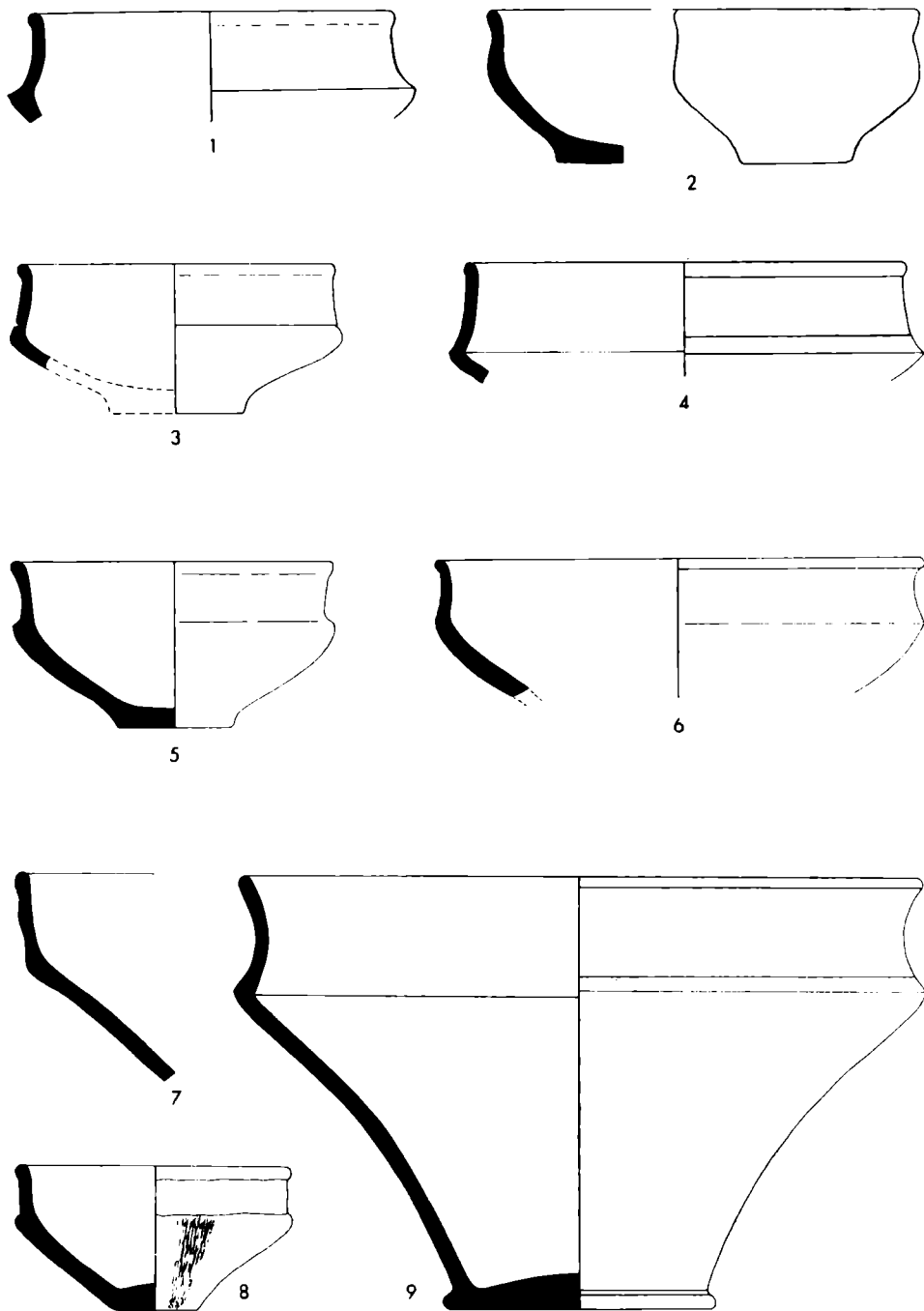


8

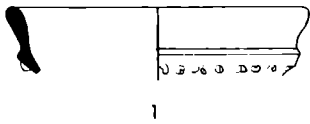


9

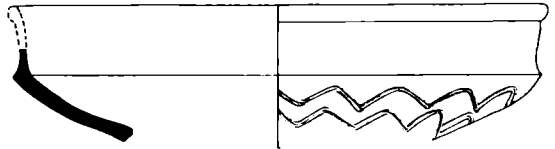
Verschiedene Formen: Blažovice (4), Bzenec II (1), Mistřín (3), Prosiměřice I (9), Stařečovice (6), Vicemilice (2,7,8), Vrchoslavice (5). — Samml. MM Brno (1-4,7,8), KP UJEP Brno (9), M Kojetín (5), M Olomouc (6). — M. 1 : 3.



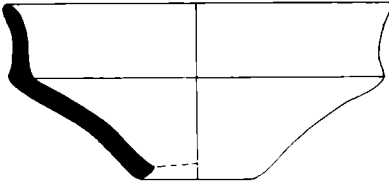
Schüsseln und Schalen: *Bezměrov* (7), *Držovice* (3), *Křepice*, Bez. *Břeclav* (9), *Ladná* (5,8), *Prosiměřice I* (1,4,6), *Vicemilice* (2). — Samml. MM Brno (2,5,7,8), KP UJEP Brno (1,4,6), AÜ CSAV Brno (9), M Olomouc (3). — M. 1 : 3. [9 nach I. Peškař und B. Kašpárková.]



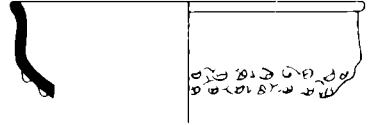
1



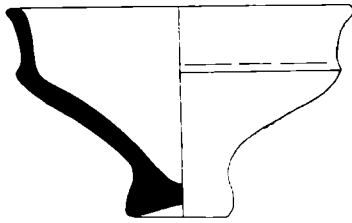
2



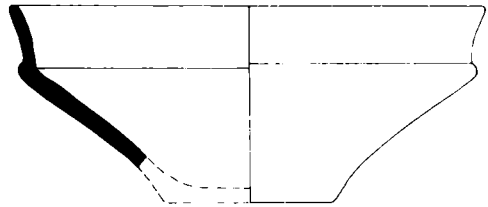
3



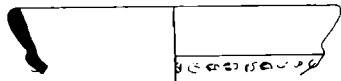
4



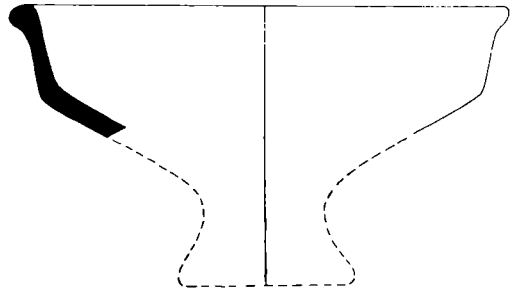
5



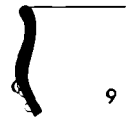
6



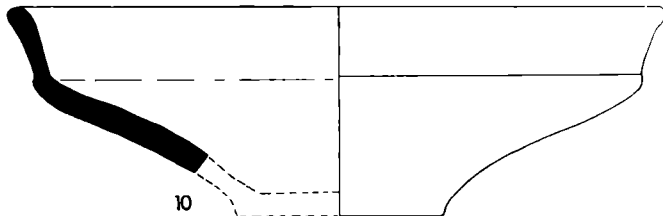
7



8

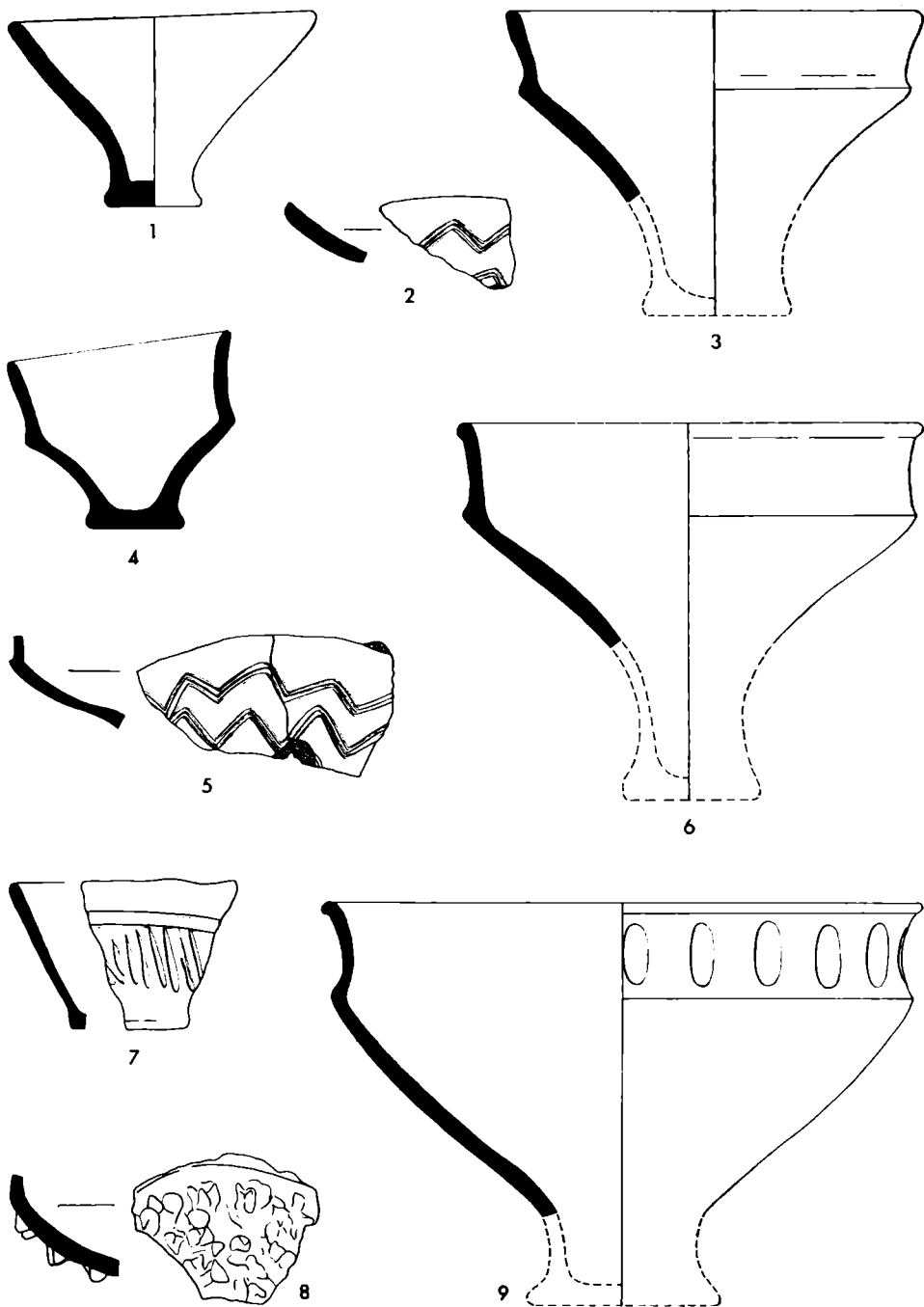


9

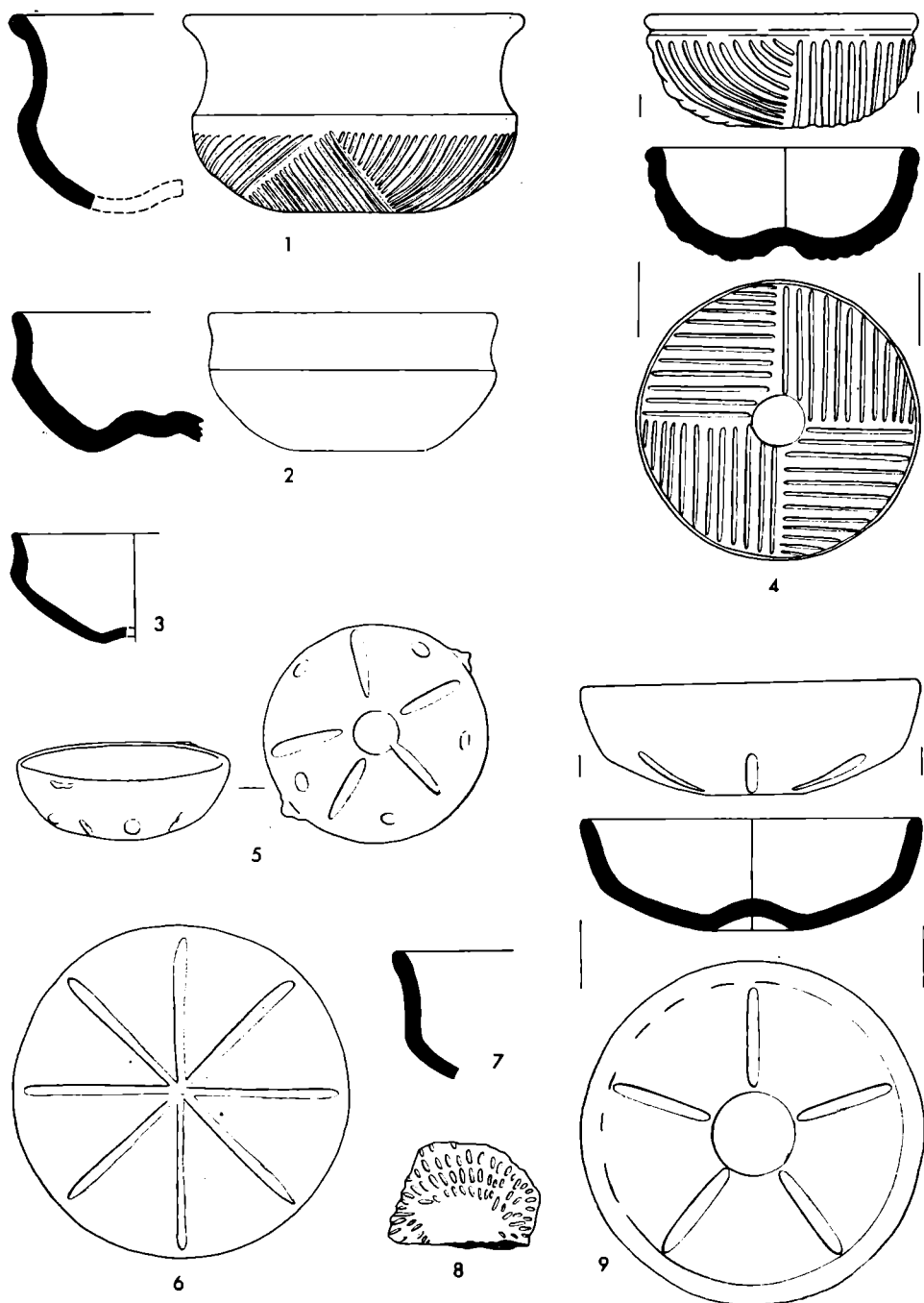


10

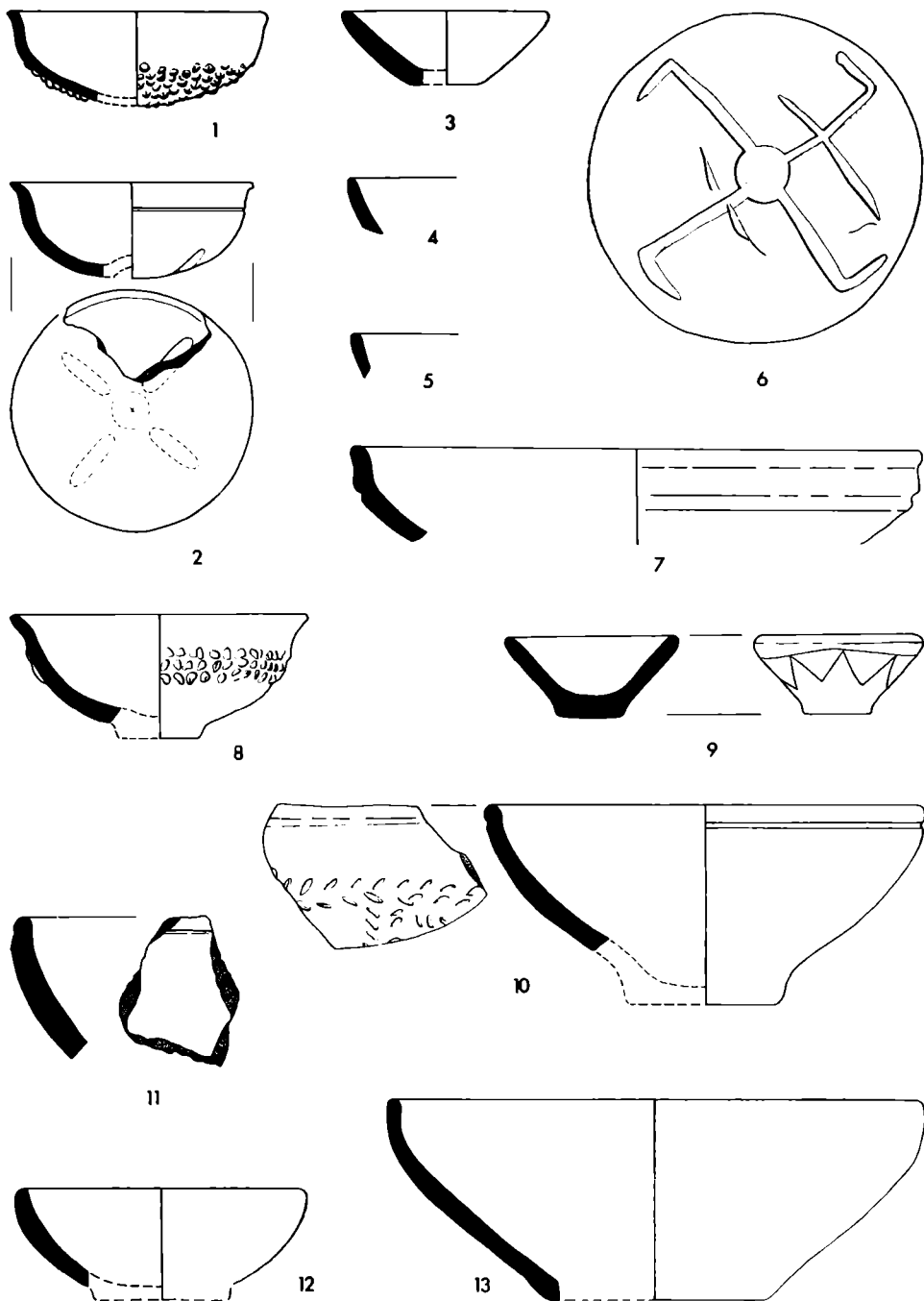
Schalen bis Fussformen: Držovice (9), Mistřín (3), Olbramovice-Zelovice (8), Prosiměřice I (1,6,7), Velké Hostěradky (4), Vicenilice (2,5,10). — Samml. MM Brno (2-5,10), KP UJEP Brno (1,6-8), M Olomouc (9). — M. 1 : 3.



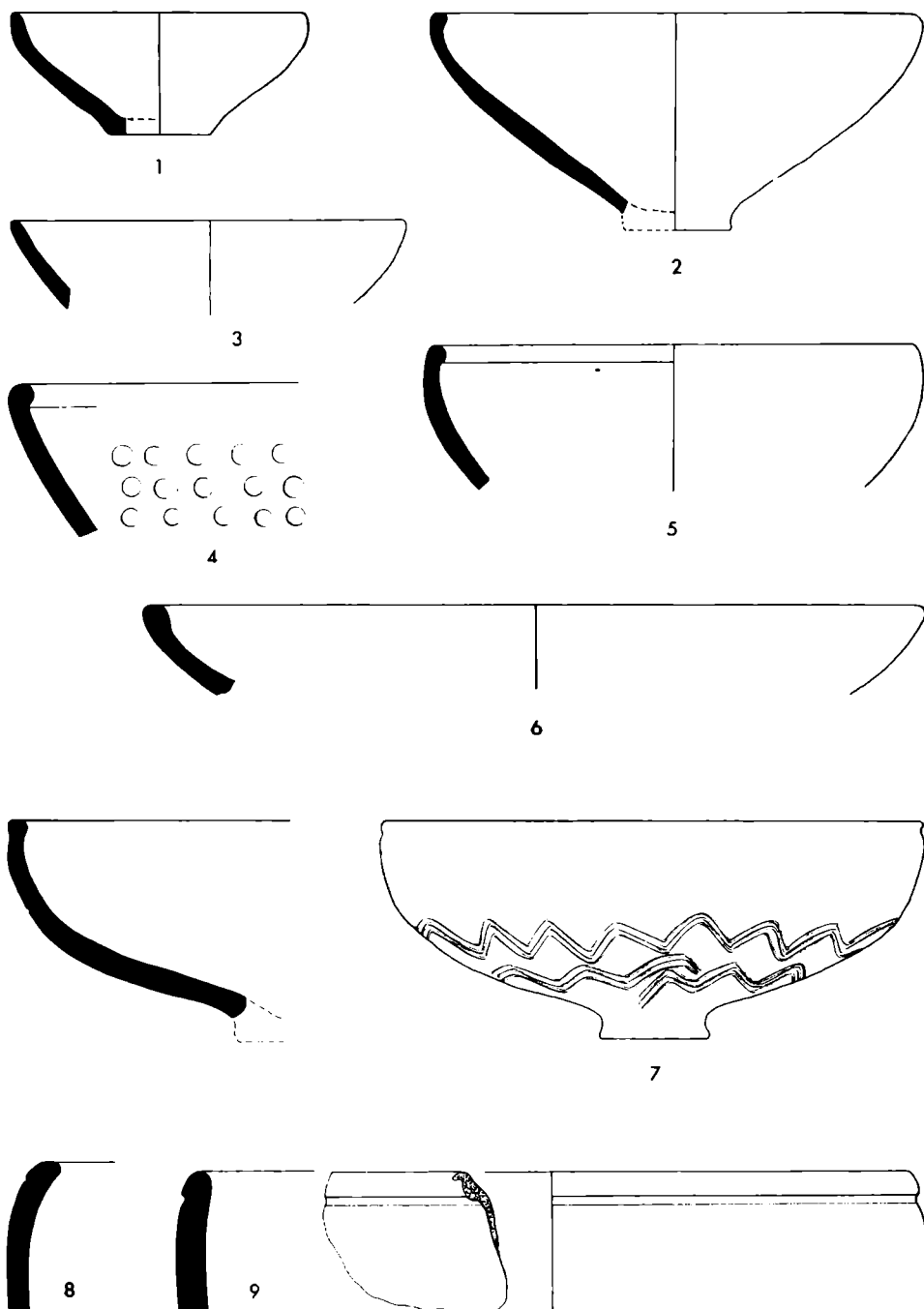
Fussbecher u. a.: Brodek u Prostějova (3), Dubňany (8), Hradčovice (1), Tištin (4,9), Věcmilice (2,5,6), Vlčnov I (7). — Samml. MM Brno (2,5-8), M. Prostějov (3), M Přerov (4,9), M Uherský Brod (1). — M. 1 : 3.



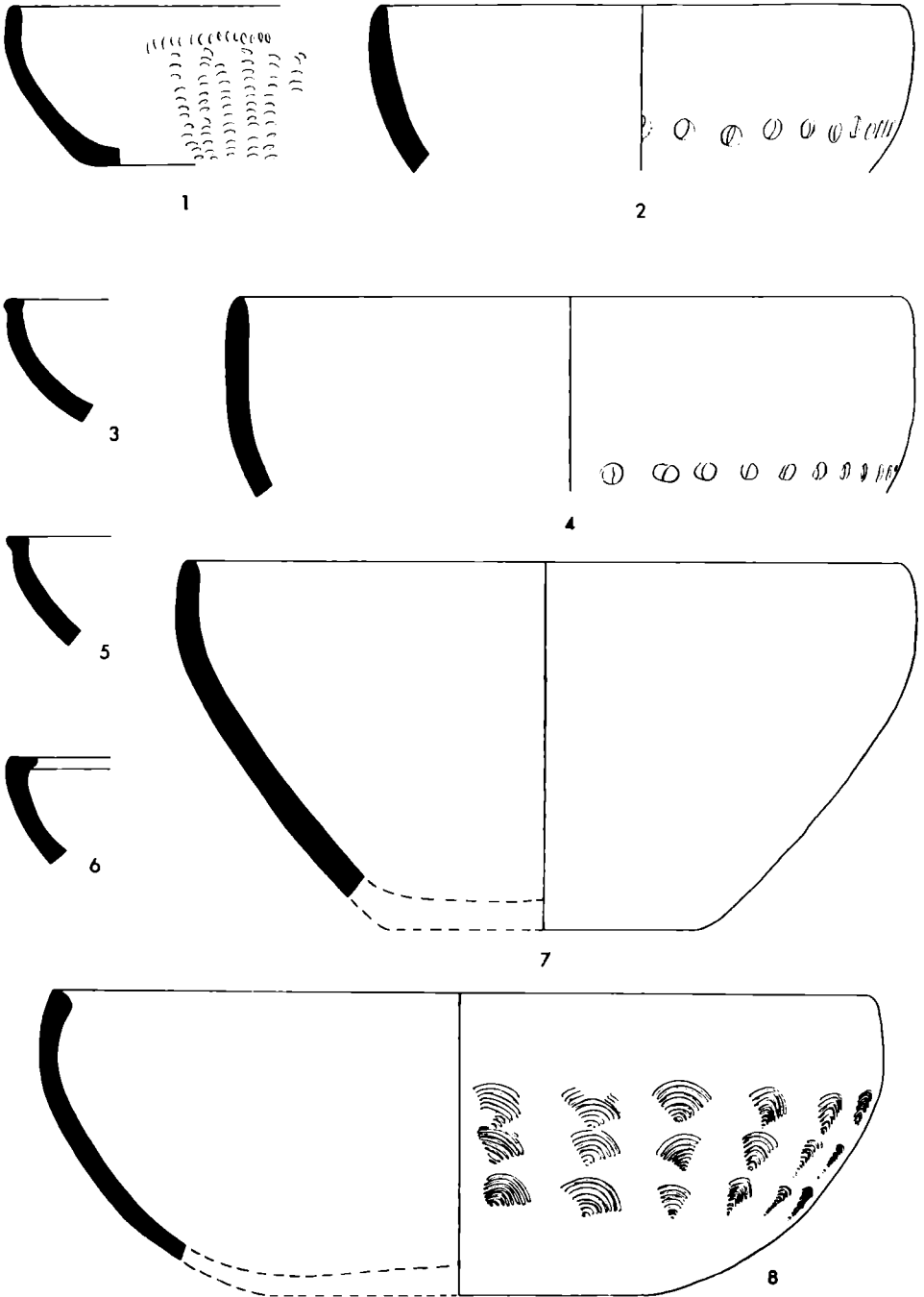
Schalen: *Bezměrov* (9), *Blažovice* (4), *Drásov* (1), *Křepice*, Bez. Břeclav (5), *Slavkov u Brna - Umgebung* (6), *Vicemilice* (2,3,7), *Vrchoslavice* (8). — Samml. MM Brno (1-4,7-9), AÜ CSAV Brno (5), M Slavkov u Brna (6). — M. 1 : 3. [5 nach I. Peškař.]



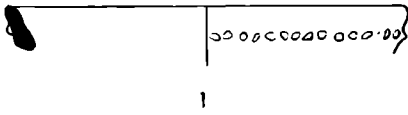
Schalenformen: *Bedřichovice I* (9), *Bezměrov* (1), *Karlin* (8), *Lanžhot* (2,10), *Prosiměřice I* (4,5,11), *Tvarožná I* (6), *Vicemilice* (3,12,13), *Vlčnov I* (7). — Samml. MM Brno (3,6,7,9,12,13), KP UJEP Brno (4,5,11), M Klobouky (8), M-Zirkel Lanžhot (2,10), M Přerov (1). — M. 1 : 3.



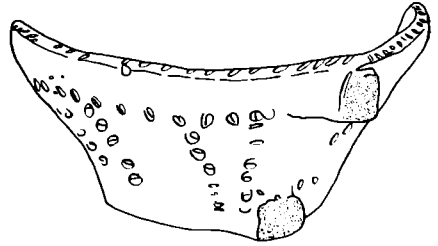
Schalen und Schüsseln: *Bezměrov* (2), *Prosiměvice I* (3,6), *Vicmilice* (1,4,5,7,8,9). — Samml. MM Brno (1,2,4,5,7-9), KP UJEP Brno (3,6). — M. 1 : 3.



Schüsselformen: *Prosiměřice I* (2), *Tištín* (1), *Vicemilice* (3–8). — Samml. MM Brno (3–8), KP UJEP Brno (2), M Píerov (1). — M. 1 : 3.



1



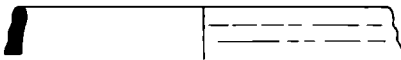
8a



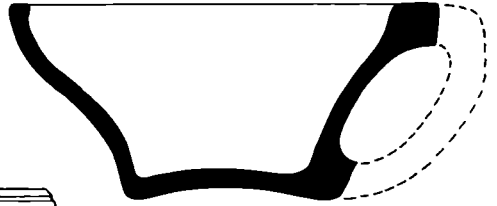
2



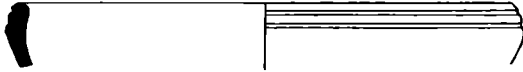
3



4



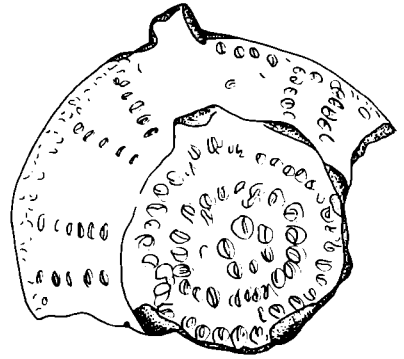
8b



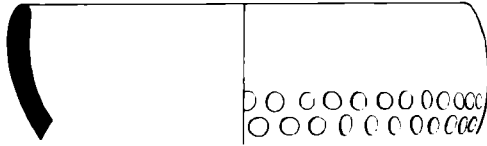
5



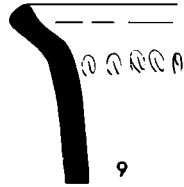
6



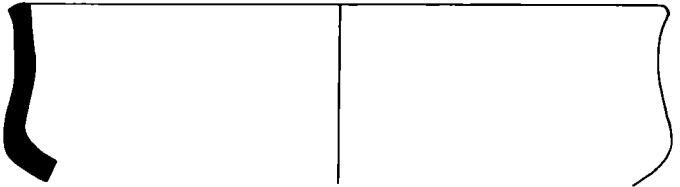
8c



7

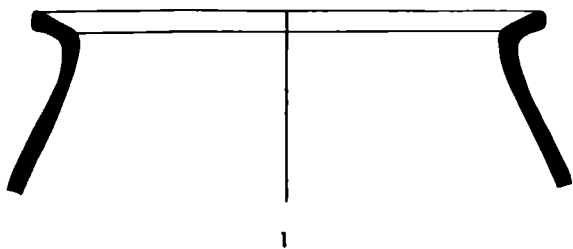


9



10

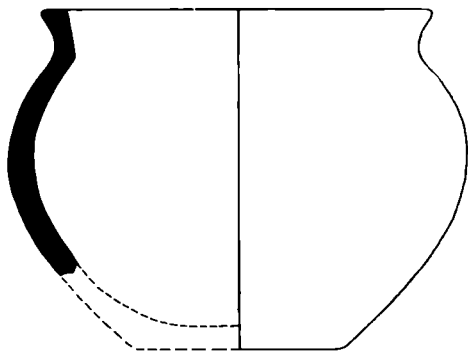
Schalenformen: *Prosiměřice I* (1-5), *Vicemilice* (6,7,9,10), *Vrchoslavice* (8). — Samml. KP UJEP Brno (1-5), MM Brno (6,7,9,10), M Kojetin (8). — M. 1 : 3.



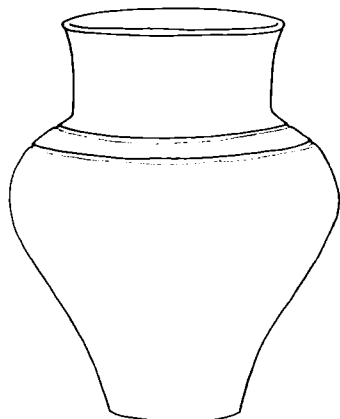
1



2



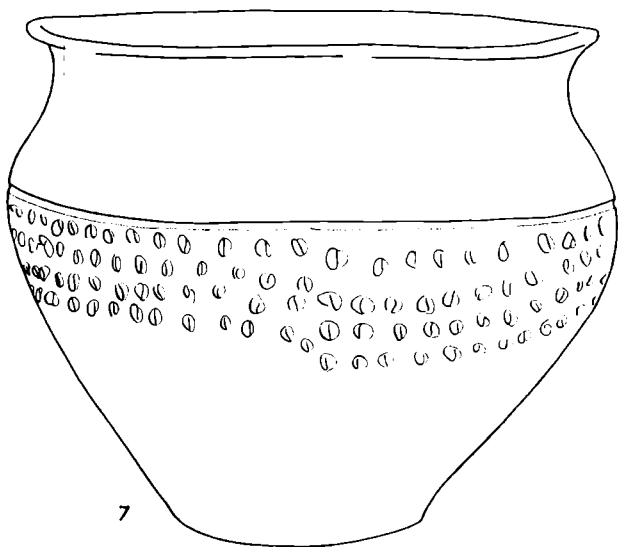
3



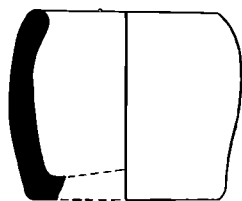
4



5

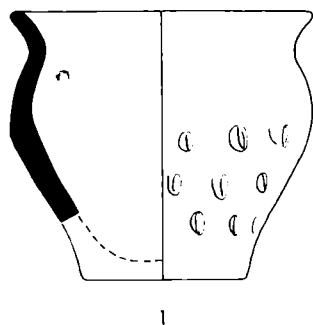


7

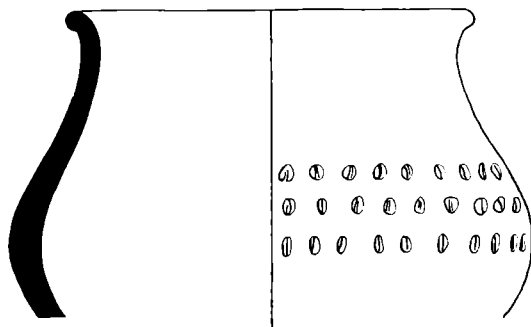


6

Verschiedene Formen: Držovice (6), Roštění (2,4,7), Vicemilice (1,3,5). — Samml. MM Brno (1,3,5), M Holešov (2,4,7), M Olomouc (6). — M. etwa 1 : 4,3 (2,4,7), 1 : 3 (1,3,5,6).



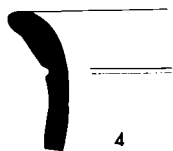
1



2



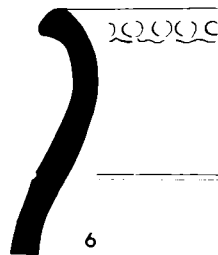
3



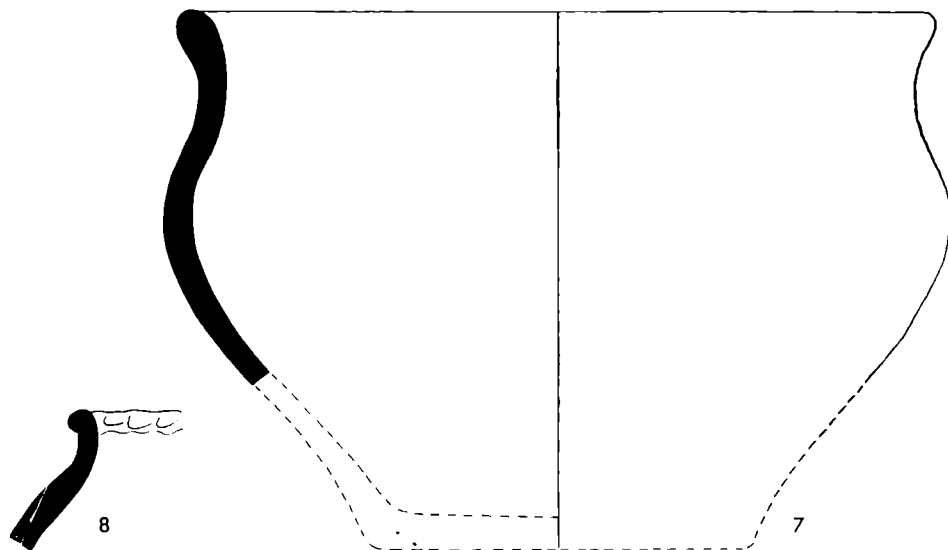
4



5

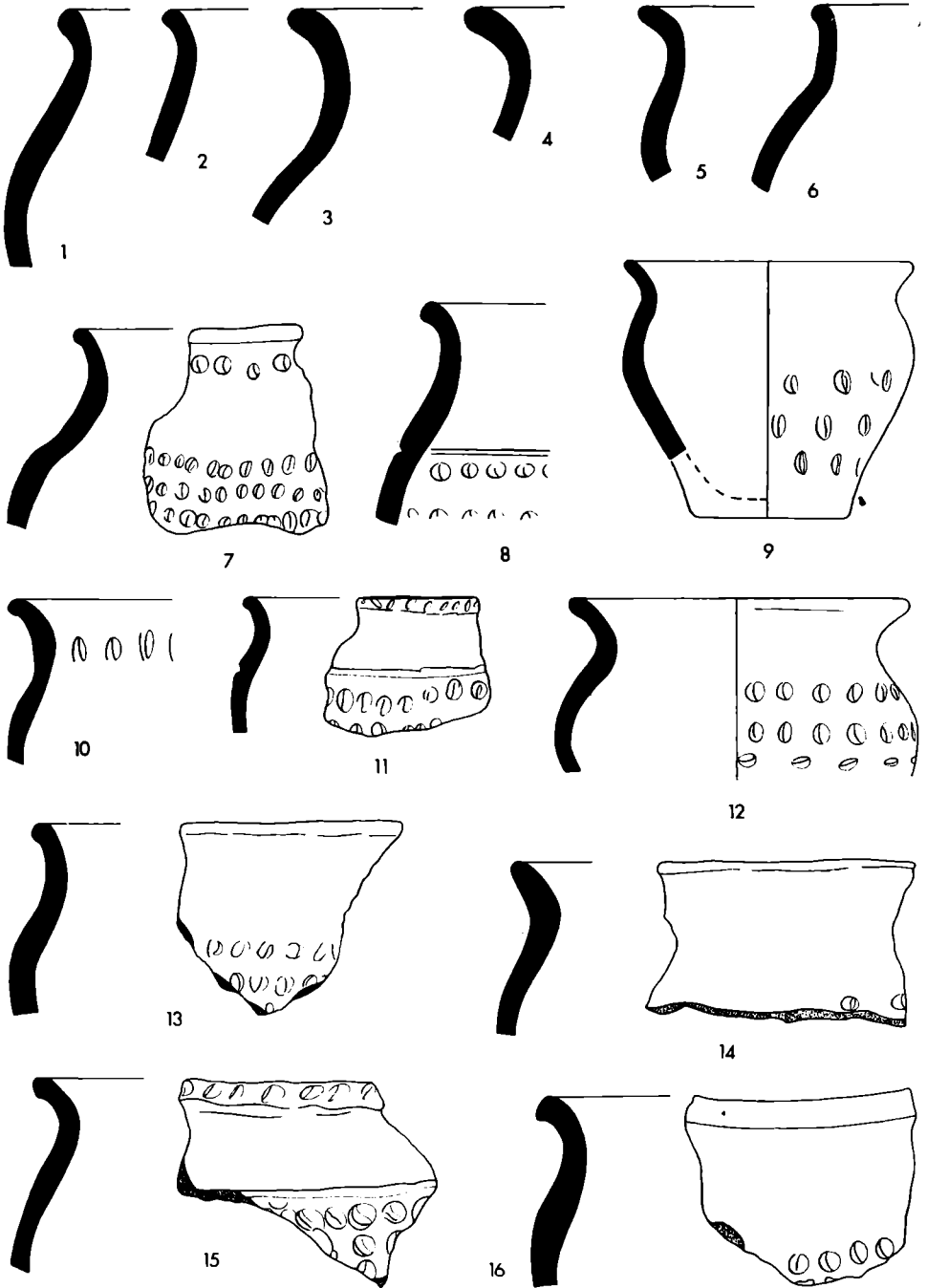


6

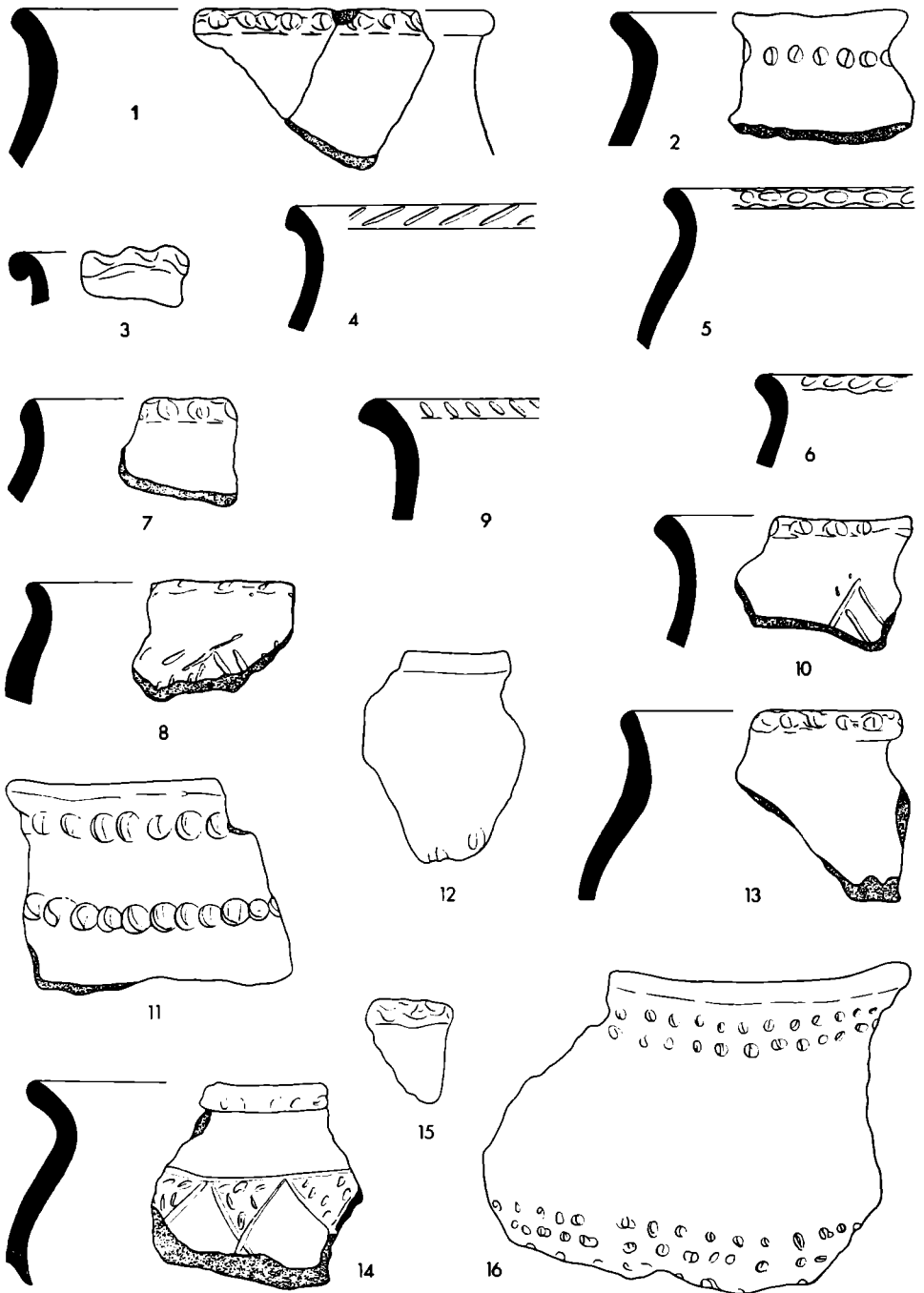


8

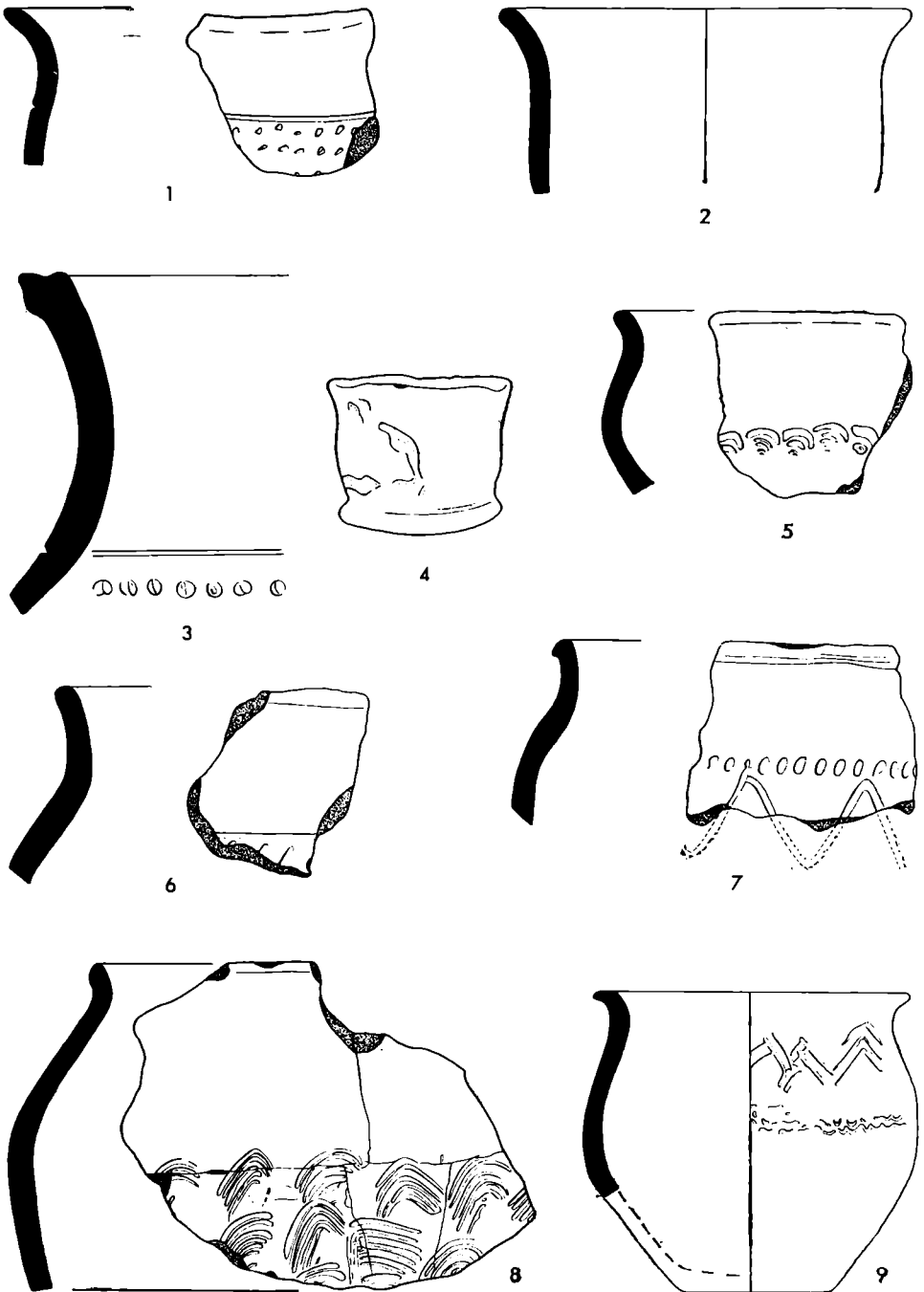
7



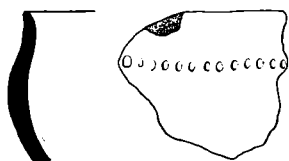
Topfformen: Blažovice (16), Držovice (12), Hrabčice (11), Jiříkovice (7,15), Lanžhot (14), Prosiměřice I (13), Vicemilice (1-6,8-10). — Samml. MM Brno (1-11,15,16), KP UJEP Brno (13), M-Zirkel Lanžhot (14), M Olomouc (12). — M. 1 : 3.



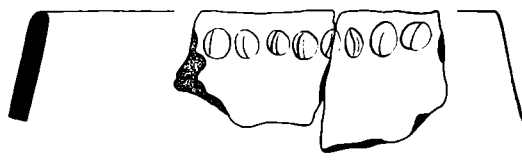
Topfformen: *Bezměrov* (2), *Blažovice* (12), *Dubňany* (14), *Petrov* (11), *Prosiměřice I* (8), *Vicemilice* (1,4-7,9,10,13), *Vlčnov I* (3,15,16). — Samml. MM Brno (1-7,9-16), KP UJEP Brno (8). — M. 1 : 3.



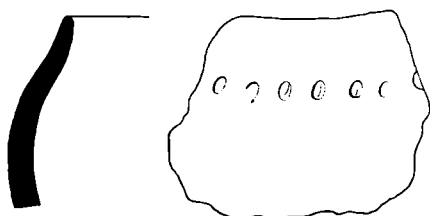
Topfformen: Čejč (5), Prosiměřice I (6-8), Skoronice II ? (4), Uherský Brod I (1), Vicemilice (2,3,9). — Samml. MM Brno (2-5,9), KP UJEP Brno (6-8), M Uherský Brod (1). — M. 1 : 3.
[I nach Jan Pavelčík.]



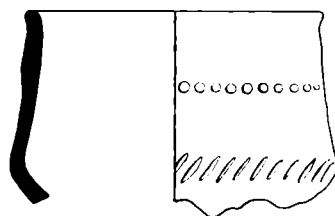
1



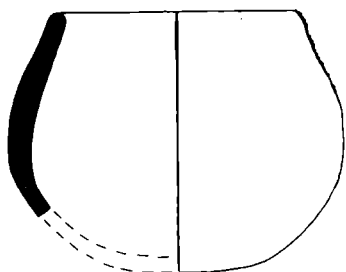
2



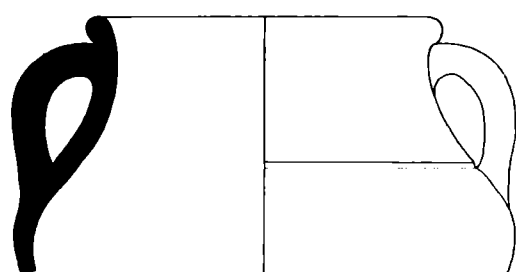
3



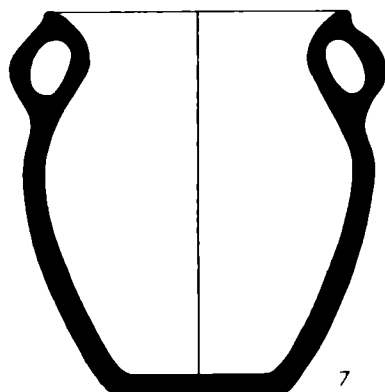
4



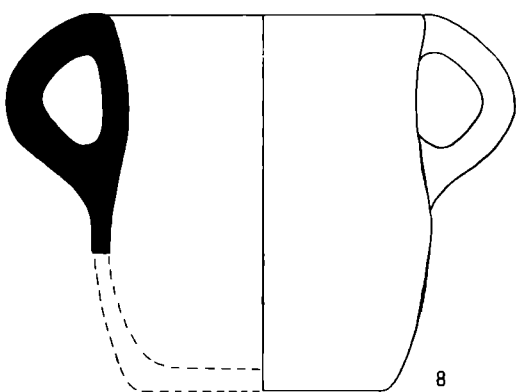
5



6

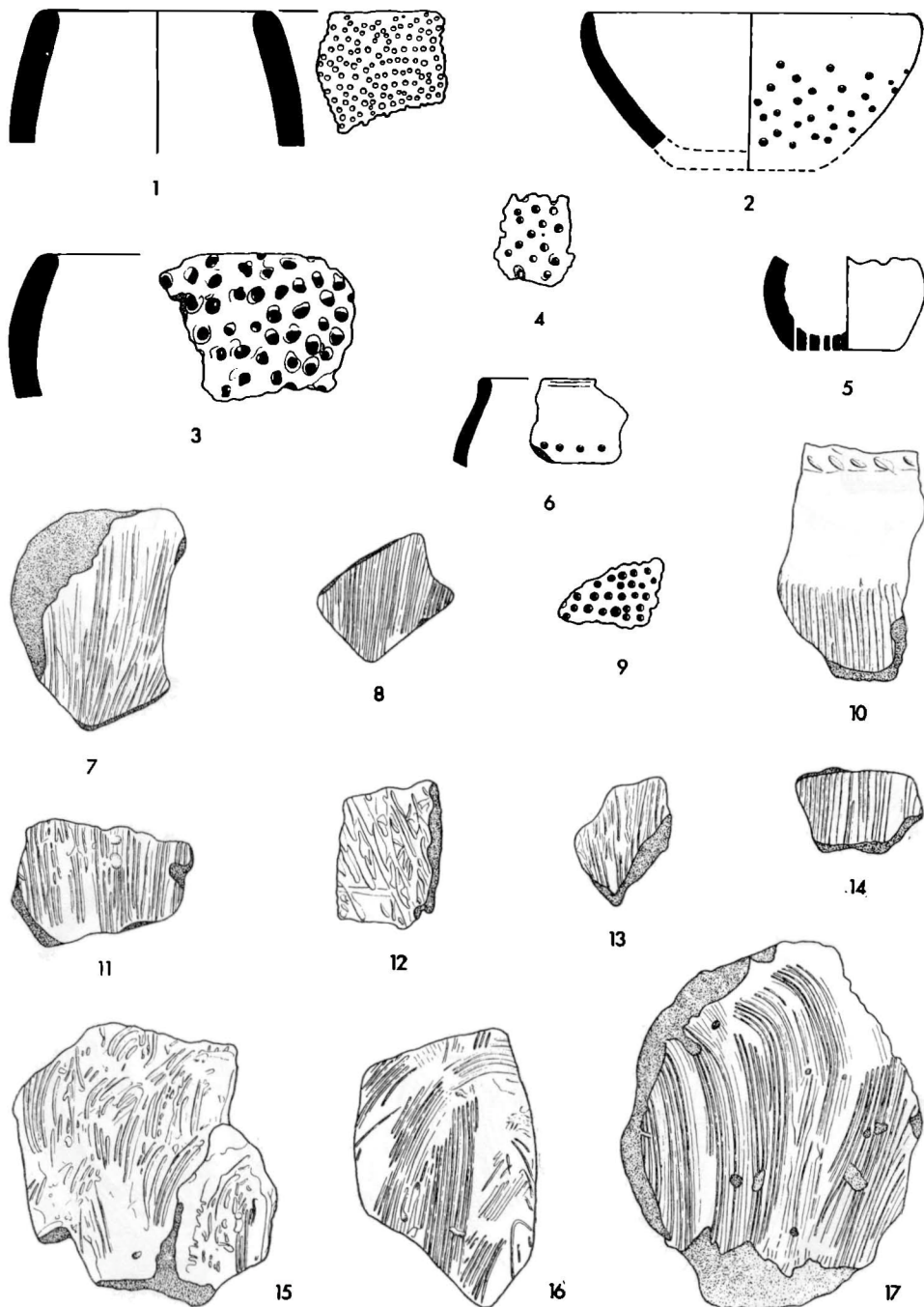


7

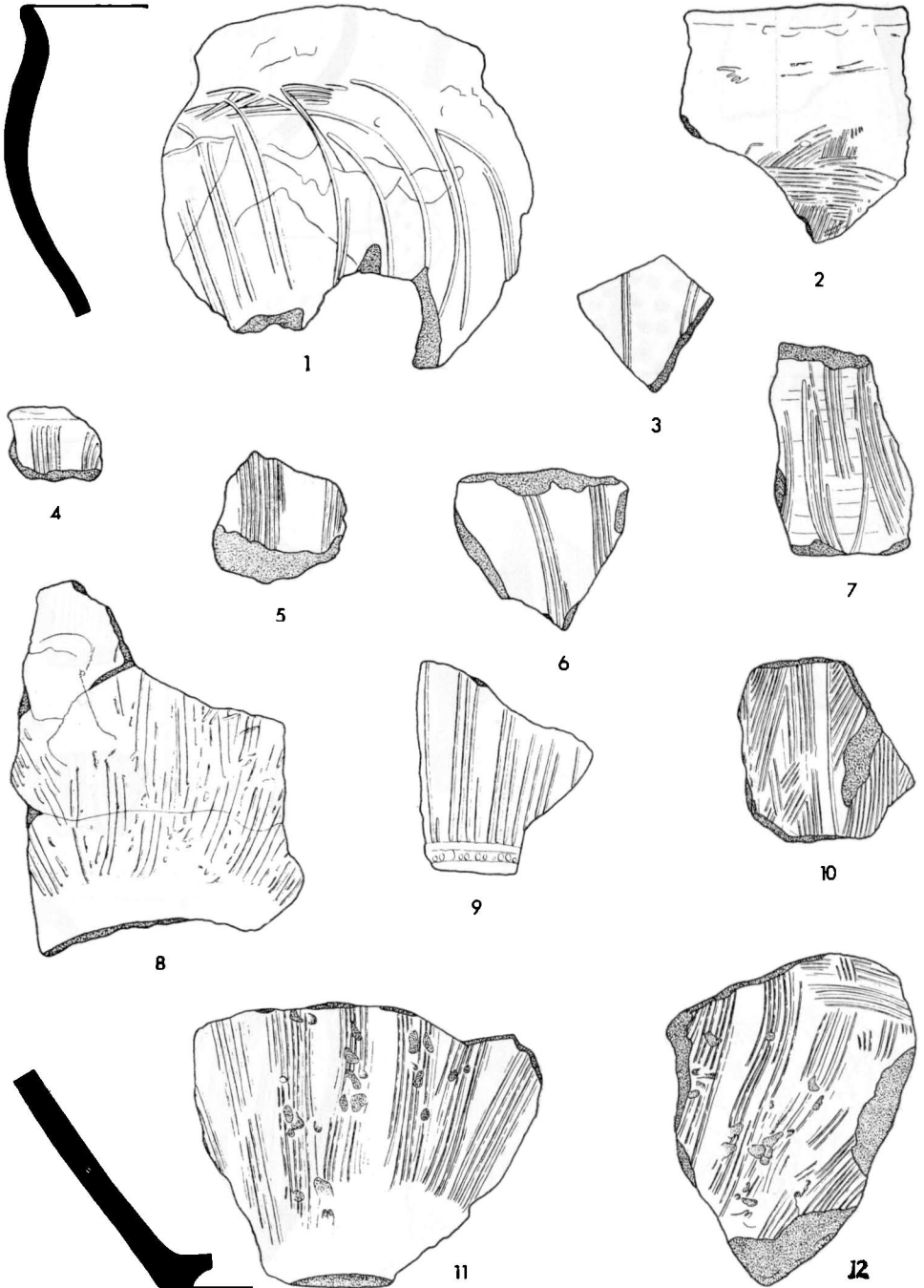


8

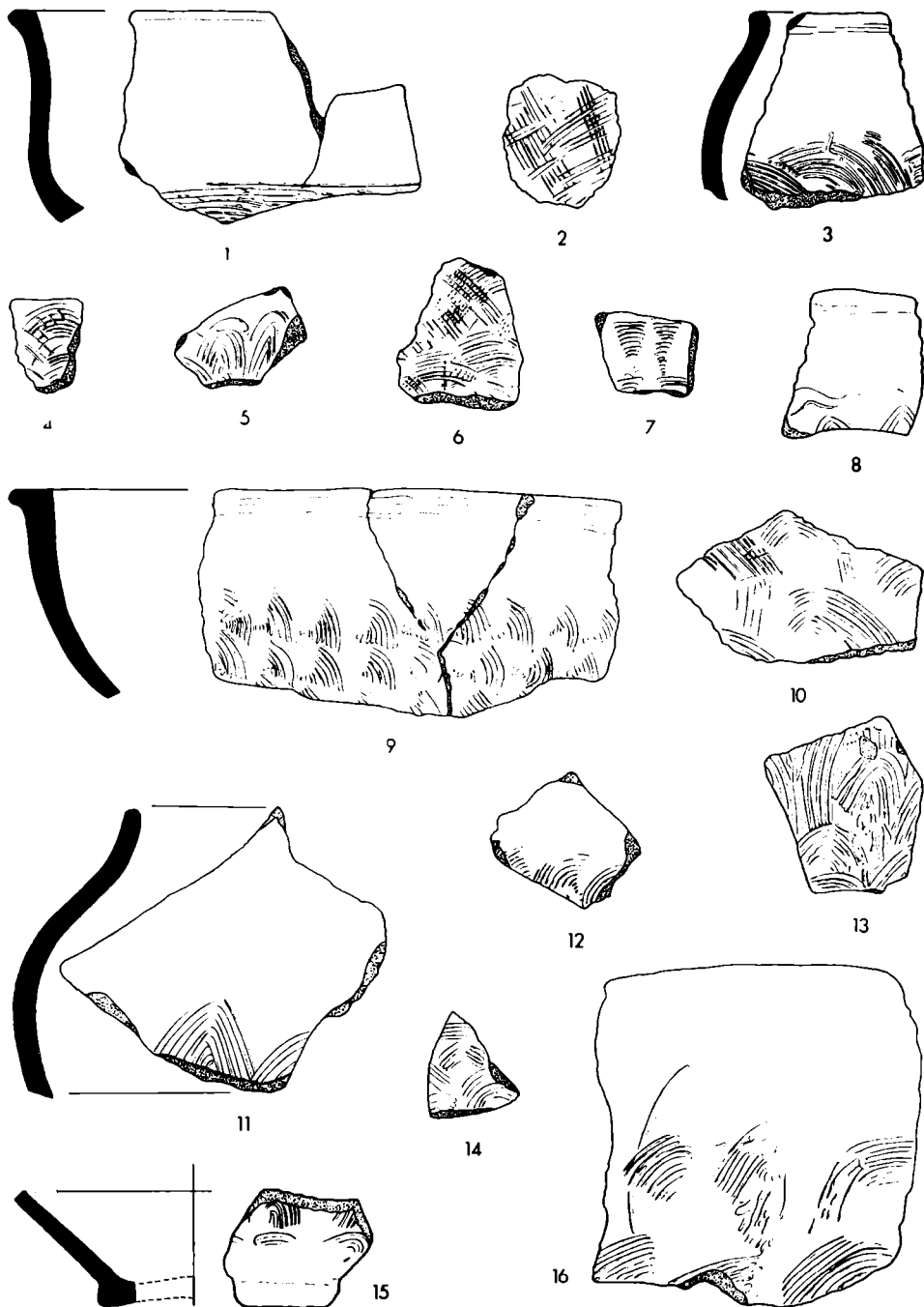
Verschiedene Formen: *Hodonice* (1-3), *Marefy* (7), *Vicemilice* (4-6,8). — Samml. MM Brno (1-8). — M. 1 : 3.



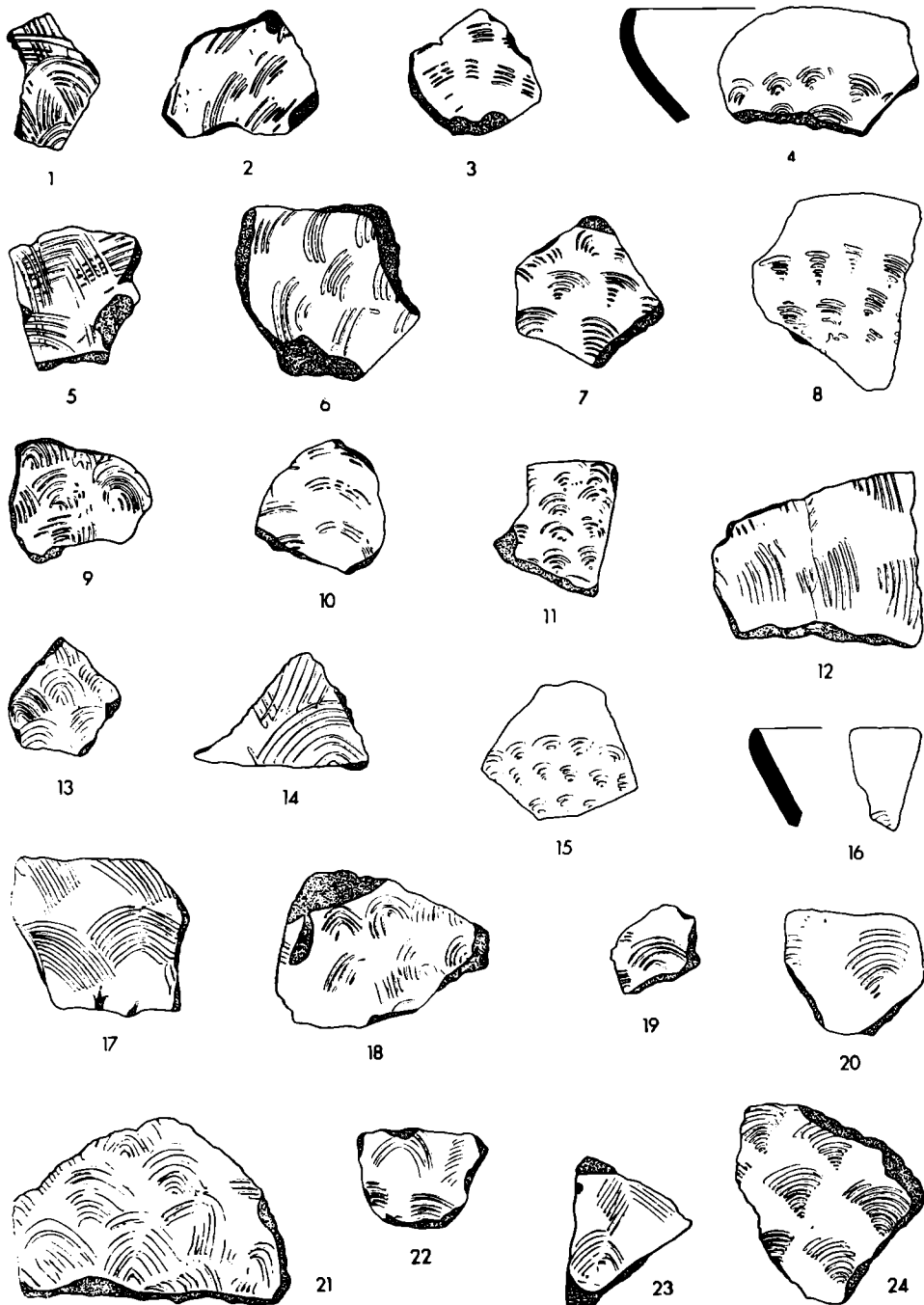
Seilergefäße und eingekämmte Verzierungen: Brodek u Prostějova (4), Čejč (8), Držovice (3), Hrubčice (10-12), Křižanovice I ? (6), Lanžhot (1), Petrov (17), Sokolnice (15), Štapanice (13), Vicemilice (2,5), Vlénov I (7,9,14), Vilkoš (16). — Samml. MM Brno (1,2,5,7-17), M Prostějov (3,4), M. Slavkov u Brna (6). — M. 1 : 3.



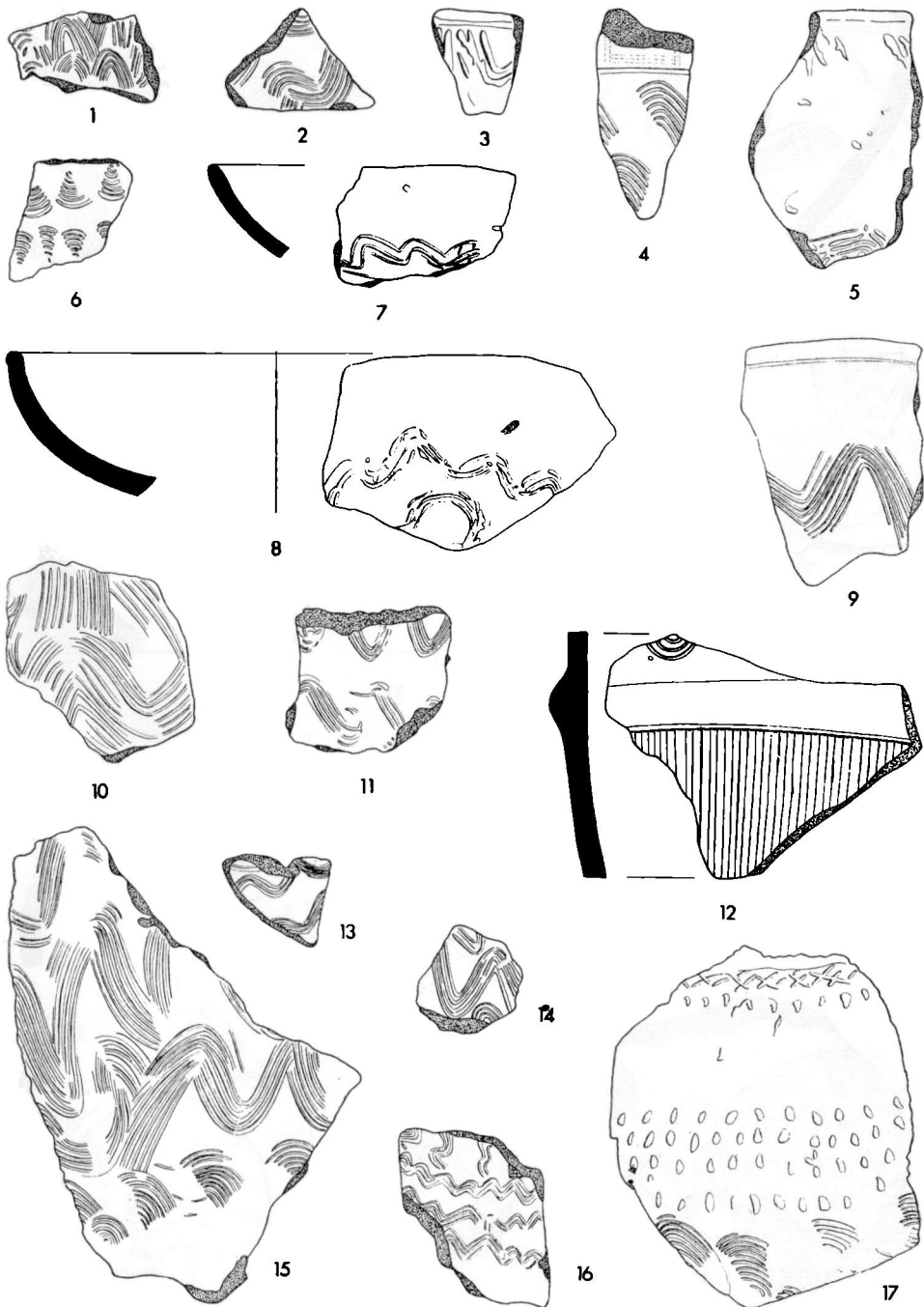
Eingekämmte Verzierungen: Čejč (5), Držovice (1), Hodonice (11,12), Horní Dunajovice-Domčice (6), Jiřikovice (10), Marefy (8), Mikulov II (2), Svatobořice (4), Tvarožná II (9), Vicemilice (7), Vlčnov I (3). — Samml. MM Brno (3-12), M Mikulov (2), M Olomouc (1). — M. 1 : 3.



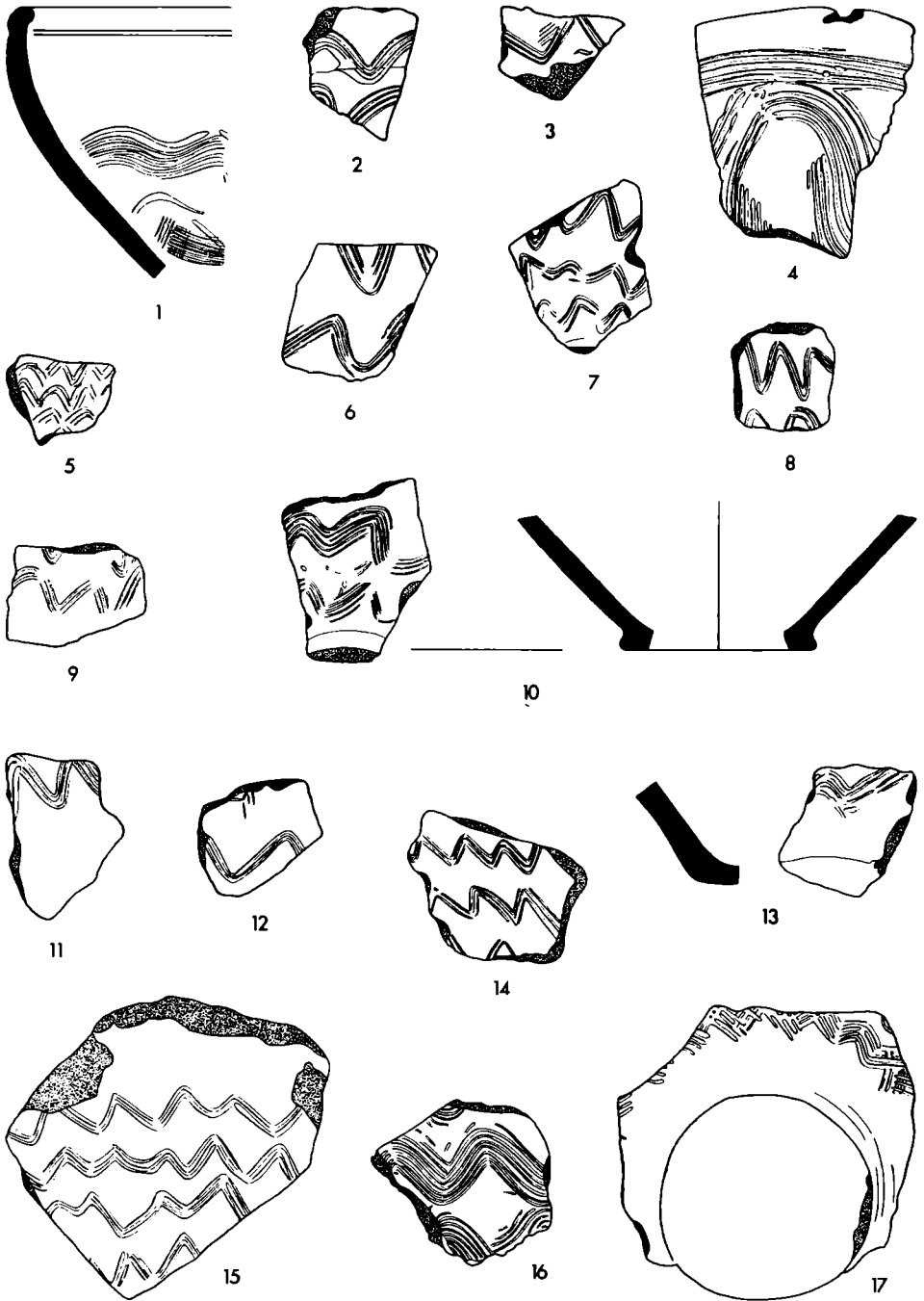
Eingekämmte Verzierungen: *Brno-Královo Pole* (4), *Brodek u Prostějova* (6,12), *Bzenec II* (1,7), *Chvalkovice* (3), *Držovice* (2), *Křepice, Bez. Znojmo* (13), *Lanžhot* (11,15), *Luleč* (14), *Mistřín* (9), *Nejdek* (5,10), *Tvarožná II* (8), *Vrchoslavice* (16). — *Samml. MM Brno* (1,3,4,7-9,13,14,16), *M-Zirkel Lanžhot* (11,15), *M Mikulov* (5,10), *M Prostějov* (2,6,12). — M. 1 : 3.



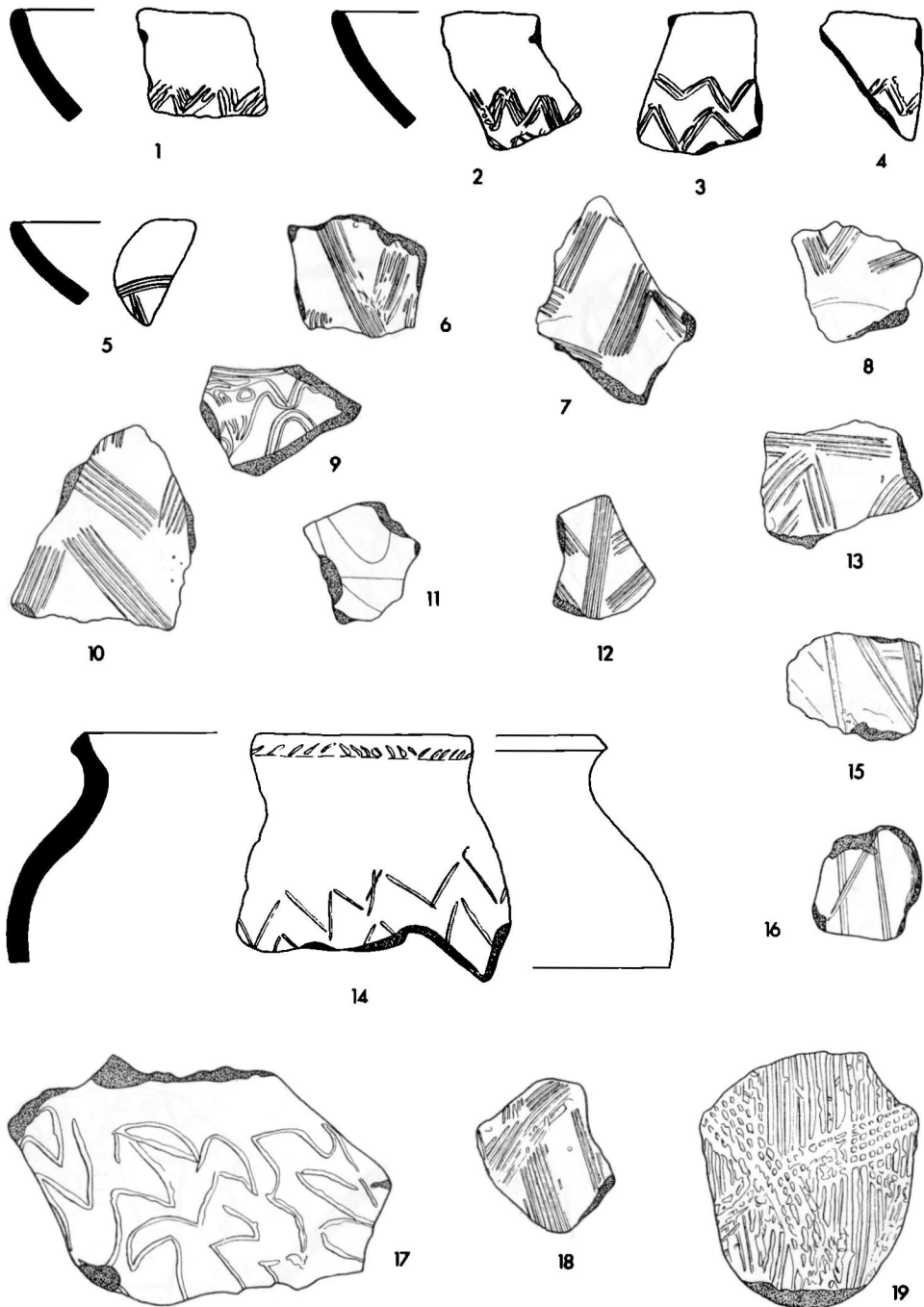
Eingekämmte Verzierungen: Brodek u Prostějova (1,3,5,9,11,13,18,19), Držovice (2,6,7,20,22,23), Nejdek (24), Olšany u Prostějova II (4), Prosiměřice I (16), Sebranice (17), Sudice (14,21), Syrovce (8), Vicemilice (12), Vlčnov I (10,15). — Samml. M Boskovice (14,21), MM Brno (8,10,12,15,17), KP UJEP Brno (16), M Mikulov (24), M Prostějov (1-7,9,11,13,18-20,22,23). — M. 1 : 3.



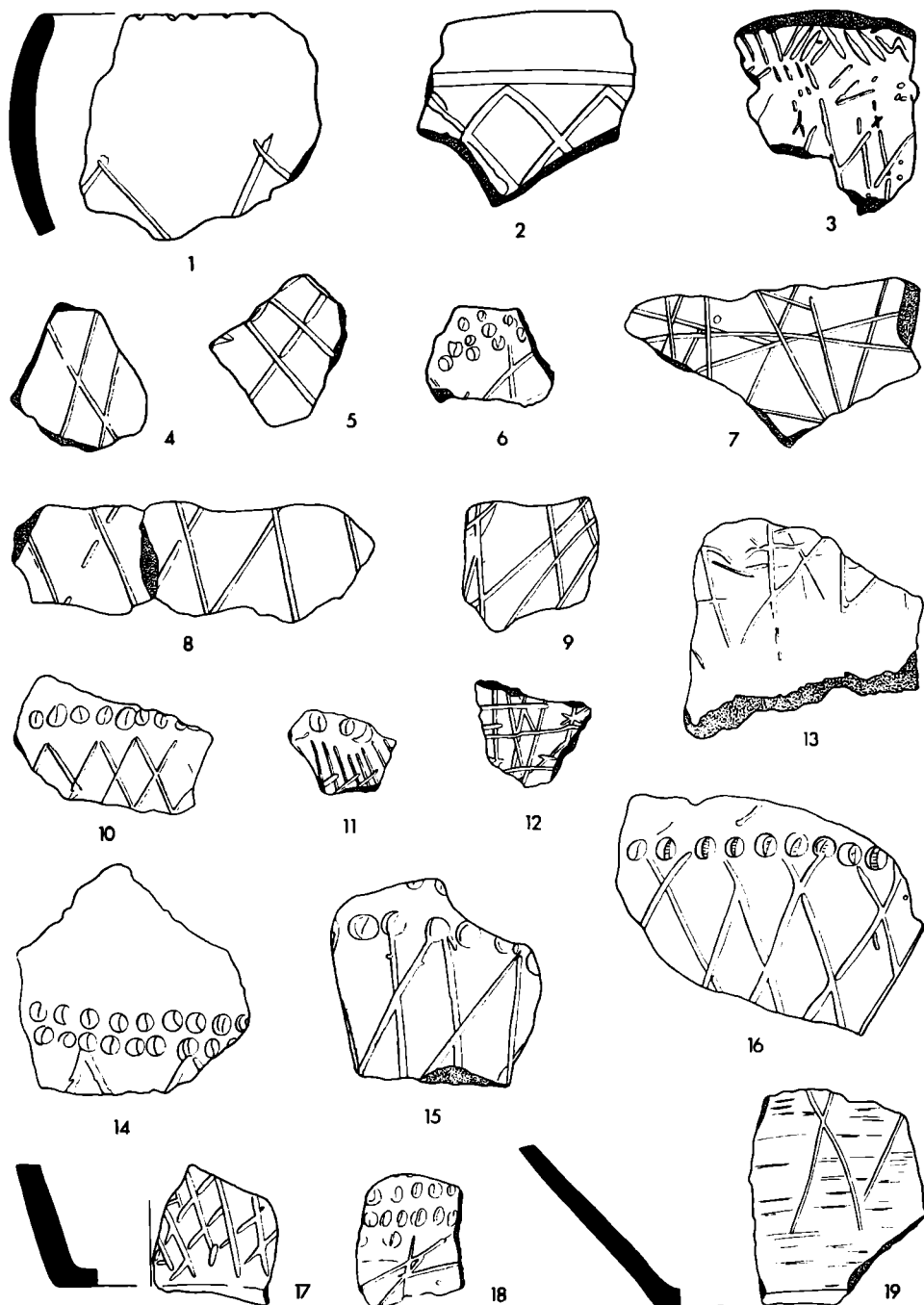
Eingekämmte Verzierungen: Brodek u Prostějova (6,7,15), Bzenec II (13), Cernčín (3), Držovice (1,2), Jířkovice (8), Nejdk (11), Sudice (10), Těšetice (17), Uherský Brod I (4,12), Vímilice (9,16), Vlčnov I (14), Vrchoslavice (5). — Samml. M Boskovice (10), MM Brno (3,5,8, 9,13,14,16), M Mikulov (11), M Prostějov (1,2,6,7,15), M Uherský Brod (4,12), M Znojmo (17). — M. 1 : 3. [4 und 12 nach Jan Pavelčík.]



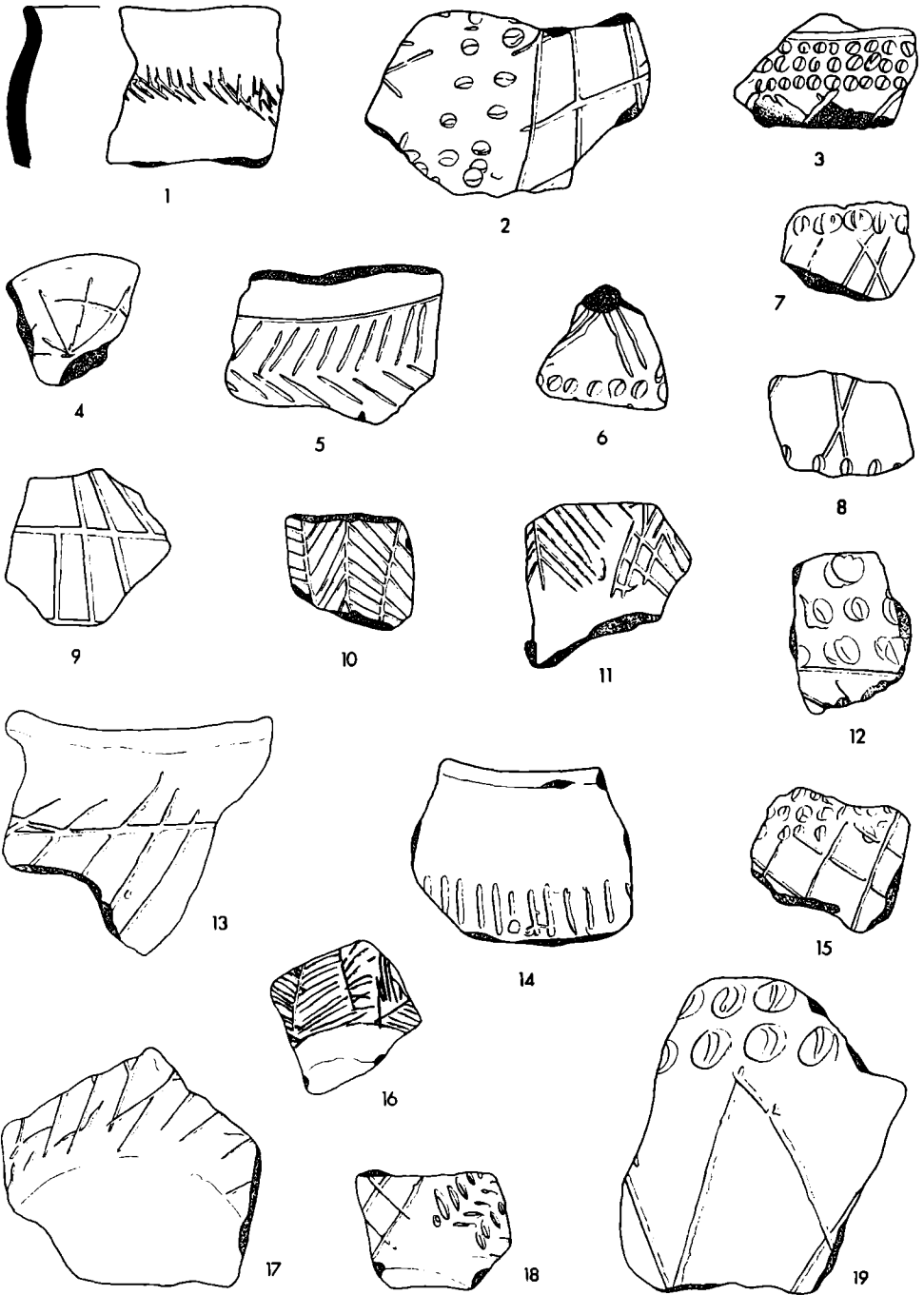
Eingekämmte Verzierungen: Brodek u Prostějova (7-10), Čejč (13), Držovice (3,5,6,12), Nejdek (16,17), Syrovice (4), Tvarožná II (15), Vicemilice (1,2,14), Vlénov I (11), — Samml. MM Brno (1,2,4,11,13-15,17), M Mikulov (16), M Prostějov (3,5-10,12). — M. 1 : 3.



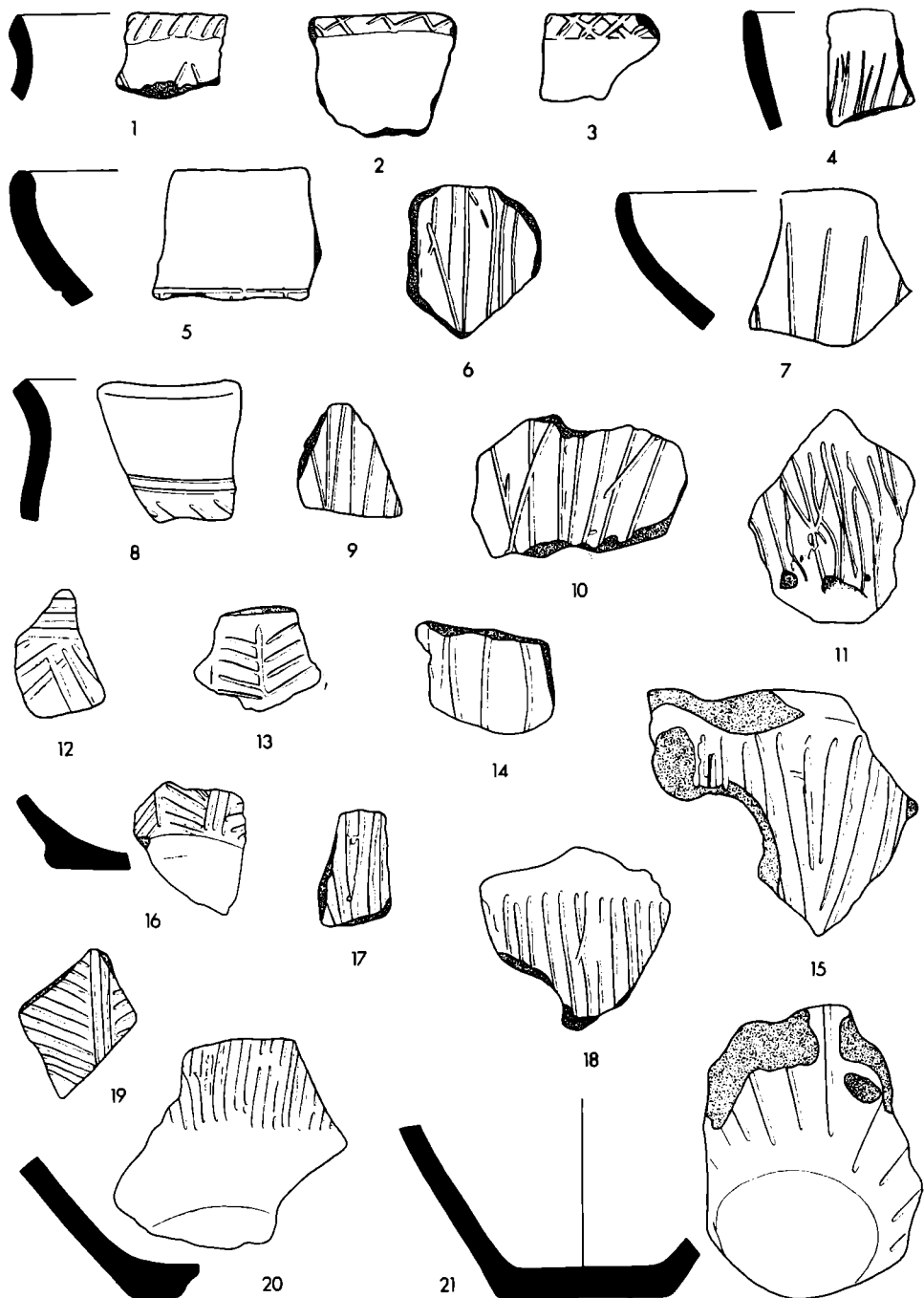
Eingekämmte und eingritzte Verzierungen: Blažovice (2-4), Brodek u Prostějova (9), Držovice (15), Hrubčice (6), Jiřkovice (7), Křižanovice I (12), Lanžhot (1), Moravské Knínice (19), Olšany u Prostějova I (18), Prosiměřice I (11), Určice II (13), Vicemilice (10,14), Vlčnov I (5,8,16), Vrchoslavice (17). — Samml. MM Brno (1-8,10,14,16,17,19), KP UJEP Brno (11), M Prostějov (9,13,15,18), M Slavkov u Brna (12). — M. 1 : 3.



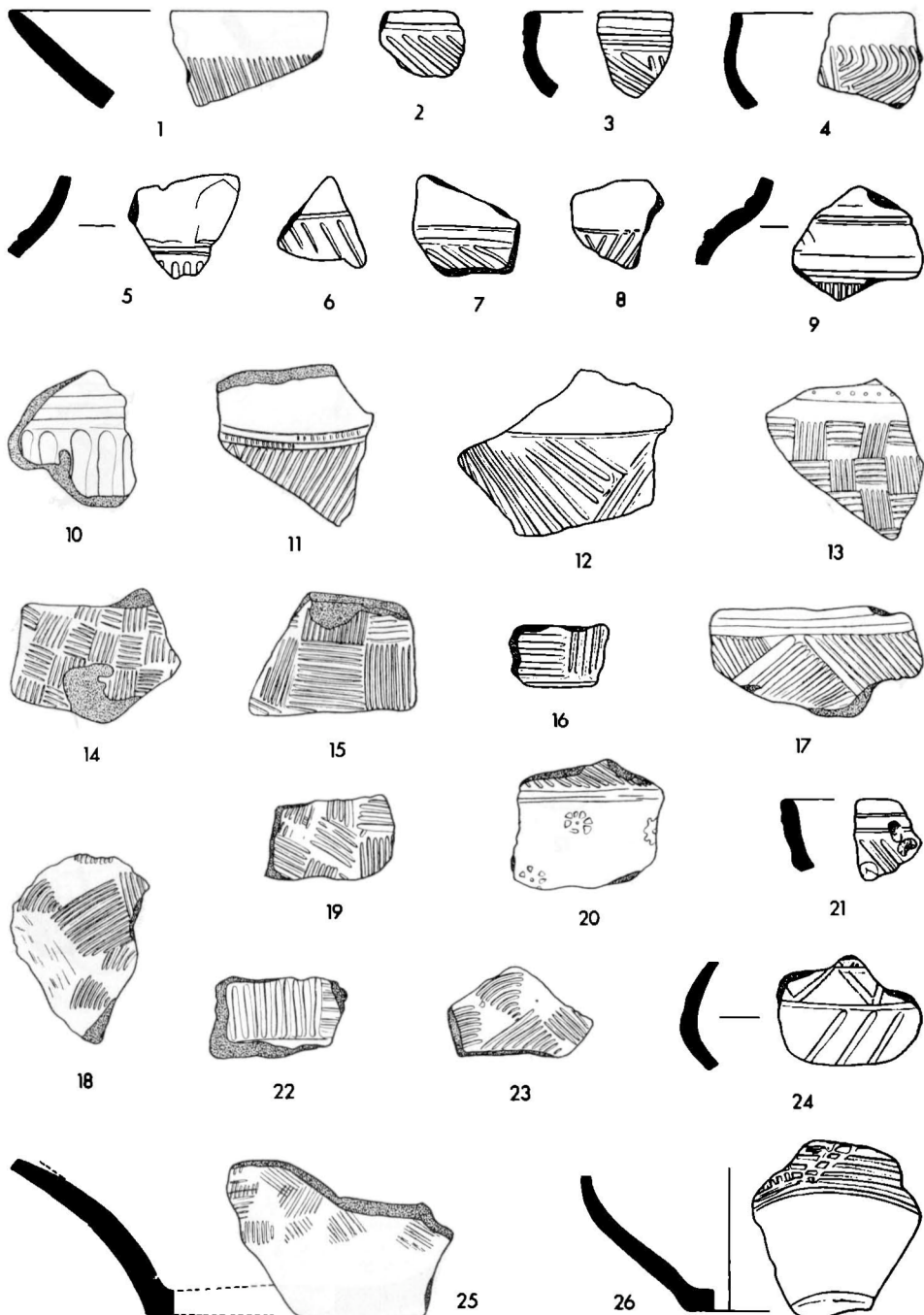
Eingeritzte Verzierungen: *Bezměřov* (14), *Brodek u Prostějova* (4-6,18), *Držovice* (1,10-12,19), *Jiříkovic* (15), *Mušov II* (13), *Sokolnice* (3), *Těšetice* (8), *Tvarožná II* (2,9), *Vicemilice* (7), *Vlčnov I* (17), *Vrchoslavice* (16). — Samml. MM Brno (2,3,7,9,14,15,17), M Kojetín (16), M Mikulov (13), M Olomouc (1), M Prostějov (4-6,10-12,18,19), M Znojmo (8). — M. 1 : 3.



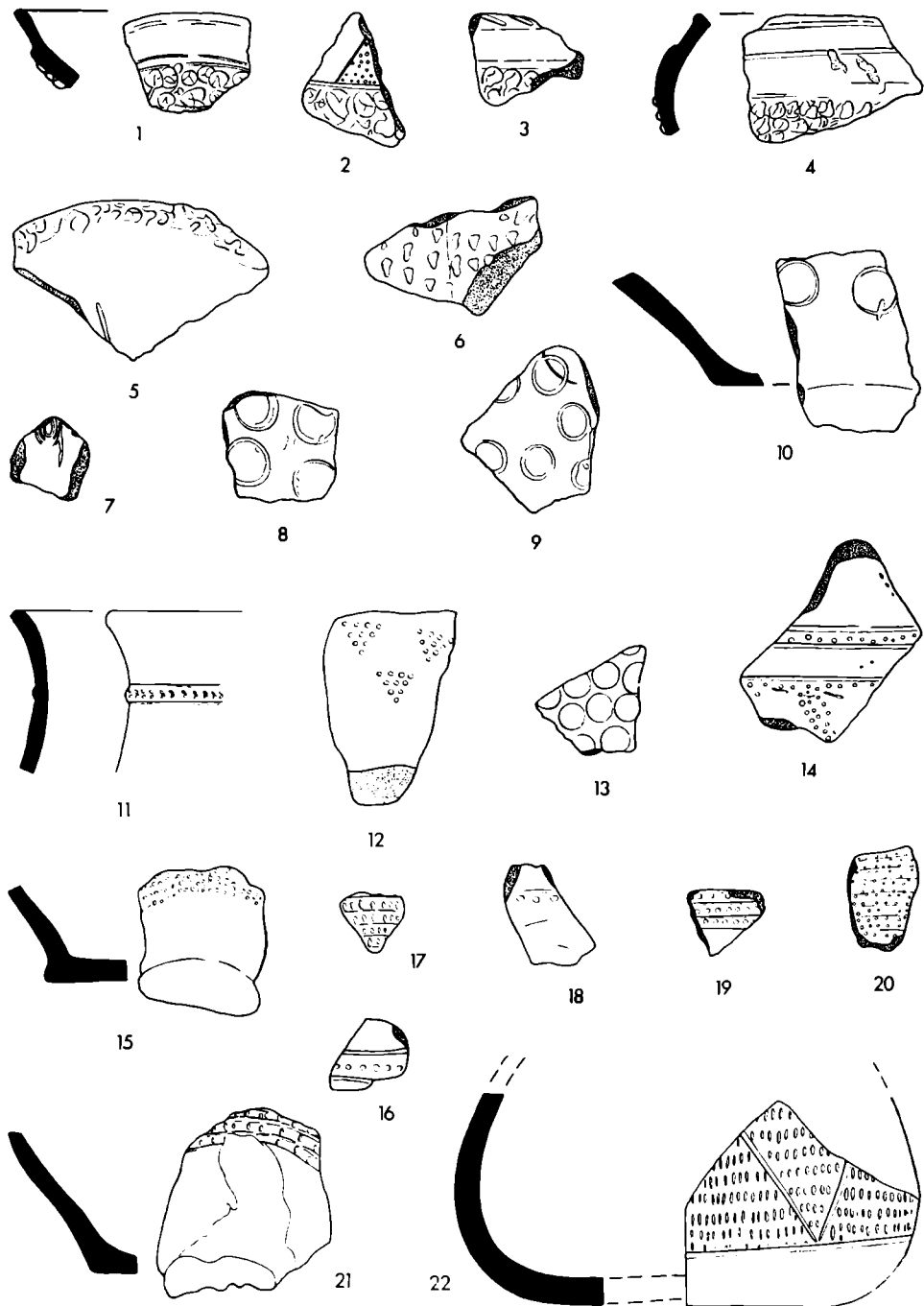
Eingeritzte Verzierungen: *Bezměrov* (2,3), *Blažovice* (6), *Brodek u Prostějova* (7), *Bzenec II* (10), *Jiříkovice* (18), *Komořany* (19), *Křížanovice I* (4), *Nejdek* (12), *Prosiměřice I* (1), *Sivice* (16), *Slapanice* (15), *Tvarožná II* (13,14,17), *Uherský Brod I* (8,9), *Vlčnov I* (5), *Vlkoš* (11). — Samml. MM Brno (2-6,10,11,13-19), KP UJEP Brno (1), M Mikulov (12), M Prostějov (7), M Uherský Brod (8,9). — M. 1 : 3. [8 und 9 nach Jan Pavelčík.]



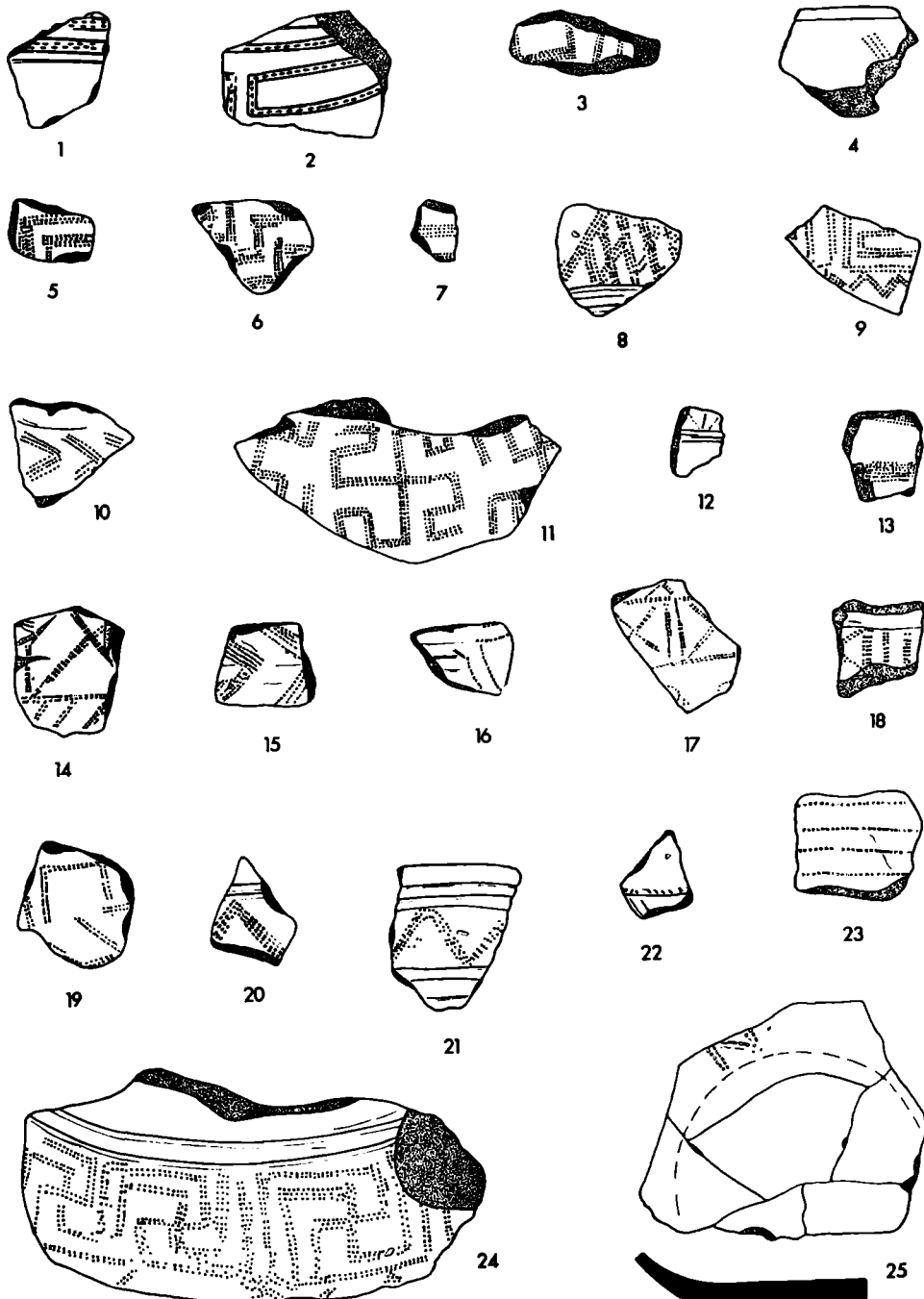
Eingeritzte Verzierungen: *Bezměrov* (3), *Brodek u Prostějova* (2,4), *Držovice* (1,9,13), *Hodonice* (6,7,18,20,21), *Hrubčice* (16), *Křepice, Bez. Břeclav* (19), *Křižanovice I ?* (8), *Petrov* (11,15), *Prosiměřice I* (5), *Slapanice* (17), *Tvarožná II* (10), *Vicemilice* (12), *Vlčnov I* (14). — Samml. MM Brno (3,6,7,10-12,14-18,20,21), KP UJEP Brno (5), AÚ ČSAV Brno (19), M Prostějov (1,2,4,9,13), M Slavkov u Brna (8). — M. 1 : 3. [19 nach I. Peškař u. B. Kašpárková.]



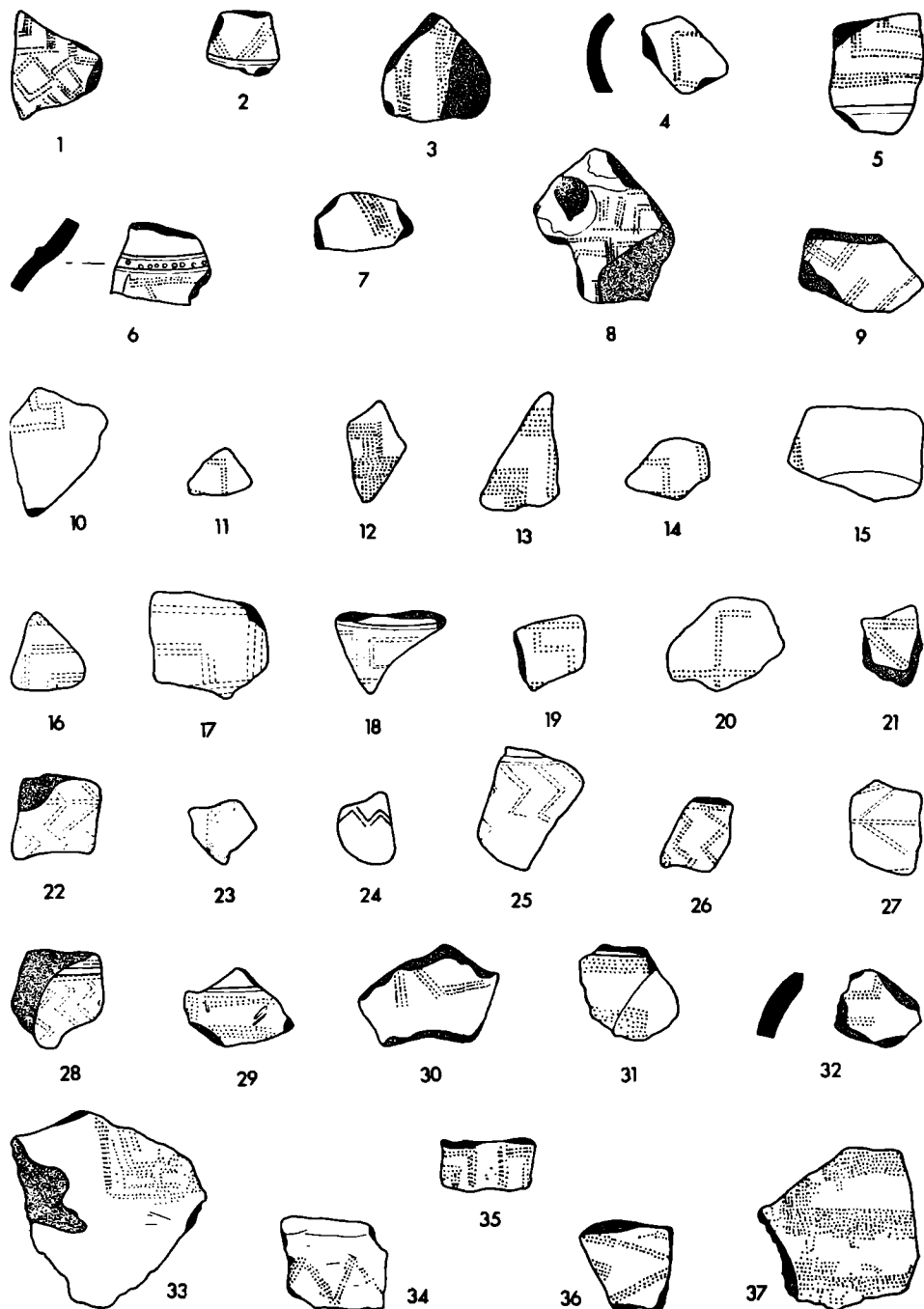
Verschiedene Verzierungswisen: *Bedřichovice I* (10), *Brodek u Prostějova* (22,23), *Čejč* (17), *Držovice* (18,19), *Horní Dunajovice-Domčice* (26), *Lanžhot* (1,4,25), *Podivín* (12), *Slapanice* (20), *Uherský Brod I* (13), *Vicemilice* (2,3,14,15,24), *Vlčnov I* (5-9,16,21), *Vrchoslavice* (11). — Samml. MM Brno (2,3,5-11,14-17,20,21,24,26), KP UJEP Brno (12), M-Zirkel Lanžhot (1,4,25), M Prostějov (18,19,22,23), M Uherský Brod (13). — M. 1 : 3. [13 nach Jan Pavelčík.]



Verschiedene Verzierungsweisen: Blažovice (5), Brodek u Prostějova (2,4,18-20), Držovice (1,7-10), Dubňany (15), Přerov-Předmostí (14), Šlapanice (3), Uherský Brod I (12), Vicemilice (6,11,13,22), Vlčnov I (16,17,21). — Samml. MM Brno (3,5,6,11,13-17,21,22), M Prostějov (1,2,4,7-10,18-20), M Uherský Brod (12). — M. 1 : 3. [12 nach Jan Pavelčík.]



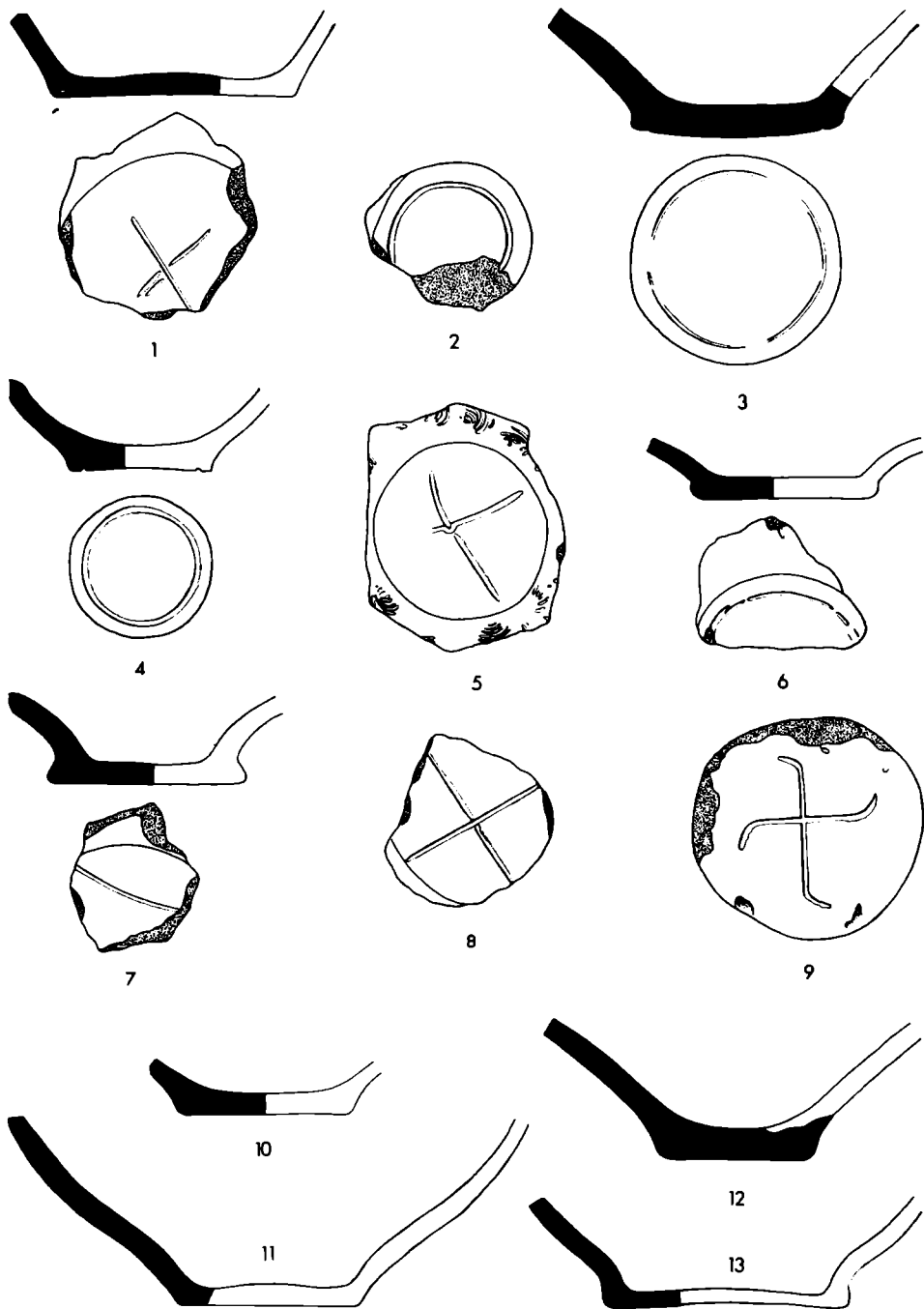
Rädchenverzierungen u. a.: *Bedřichovice I* (8), *Brno-Královo Pole* (10), *Brodek u Prostějova* (14-19), *Držovice* (1,2), *Kojetín, Bez. Přerov* (3,4), *Mistřín* (11), *Přerov-Předmostí* (5-7), *Smržáček* (9), *Vicemilice* (20-25), *Vrchoslavice* (12,13). — Samml. MM Brno (3-8,10-13,20-25). M Prostějov (1,2,9,14-19). — M. 1 : 3.



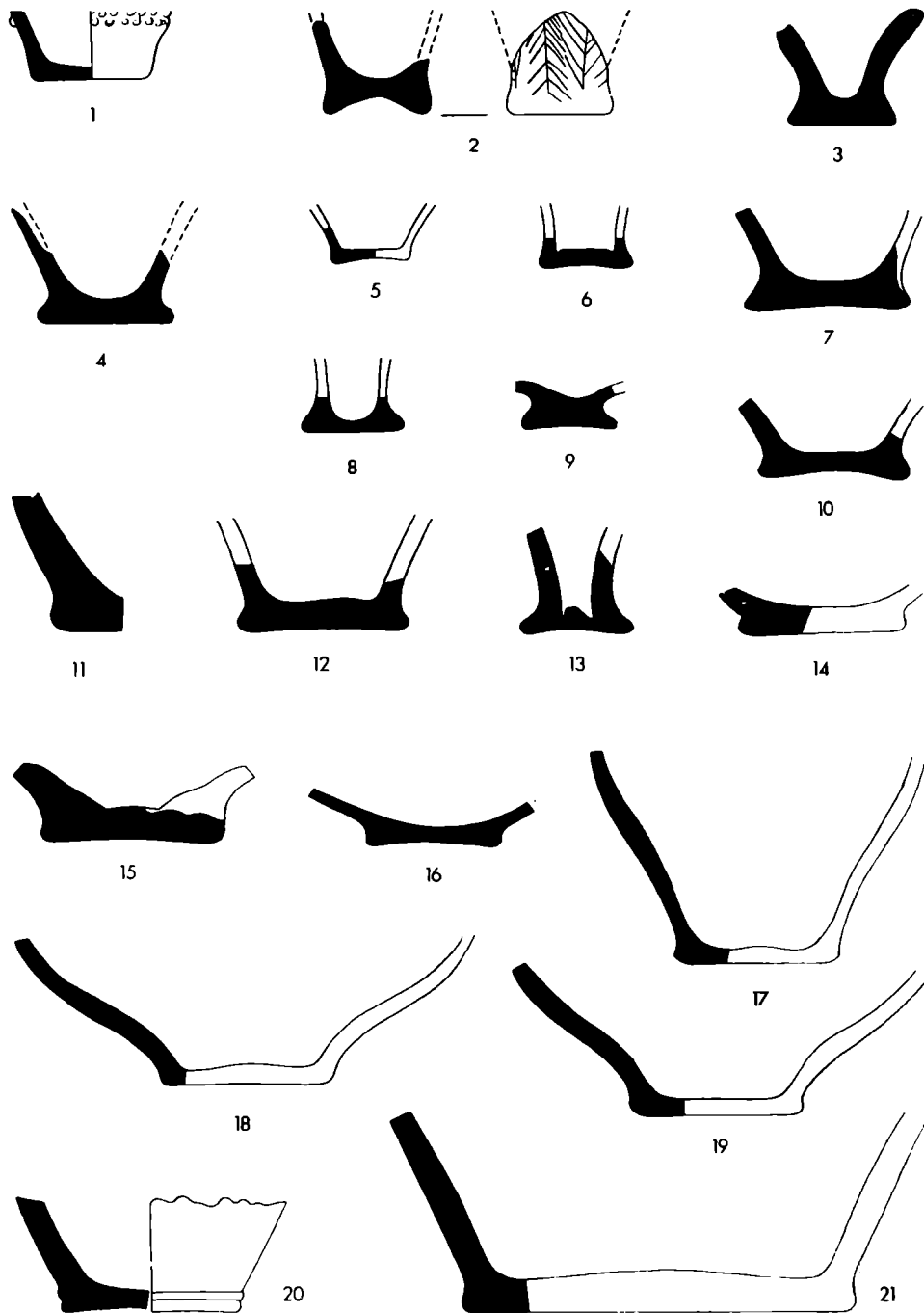
Rädchenverzierungen: *Držovice* (33-37), *Hrubčice* (29-32), *Křižanovice I* (6,7), *Skalice nad Svitavou* (1), *Svatobořice* (8), *Uherský Brod I* (9-28), *Vlčnov I* (2-5). — Samml. MM Brno (2-8,10,21,30,32), M Prostějov (29,31,33-37), M Uherský Brod (9,11-20, 22-28); verschollen ? (1). — M. 1 : 3. [9,11-20 und 22-28 nach Jan Pavelčík, 1 nach K. Schirmeisen.]



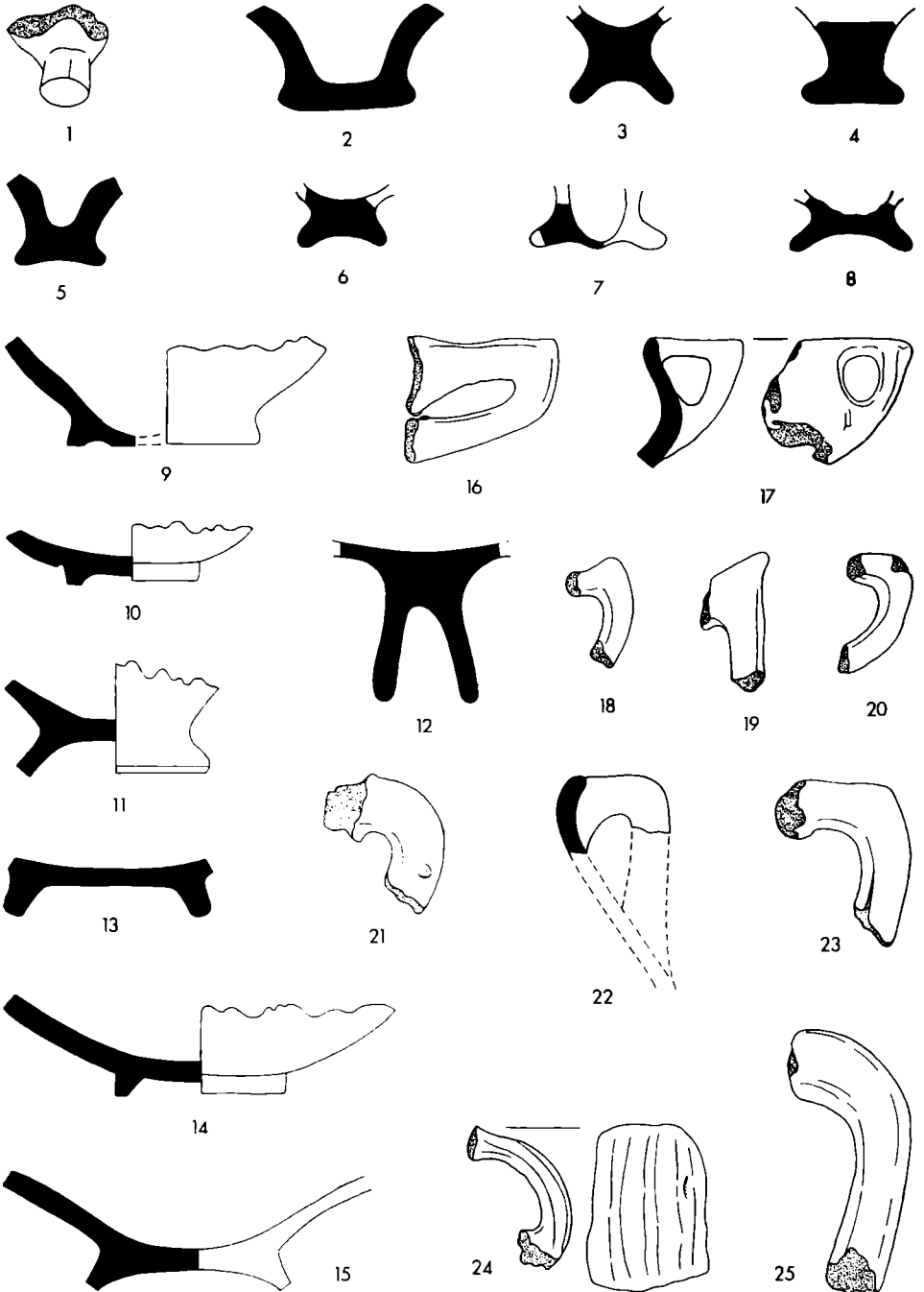
Verzierungen durch Nageleinritz: Brodek u Prostějova (1,3,6-11,20,22,23), Hrubčice (21), Oblekovice-Bohumilice (4), Podivín (12,16-19), Smržice (2), Vícemilice (13-15), Vlčnov I (5). — Samml. MM Brno (5,13-15,21), KP UJEP Brno (4,12,16-19), M Prostějov (1-3,6-11,20,22,23). — M. 1 : 3.



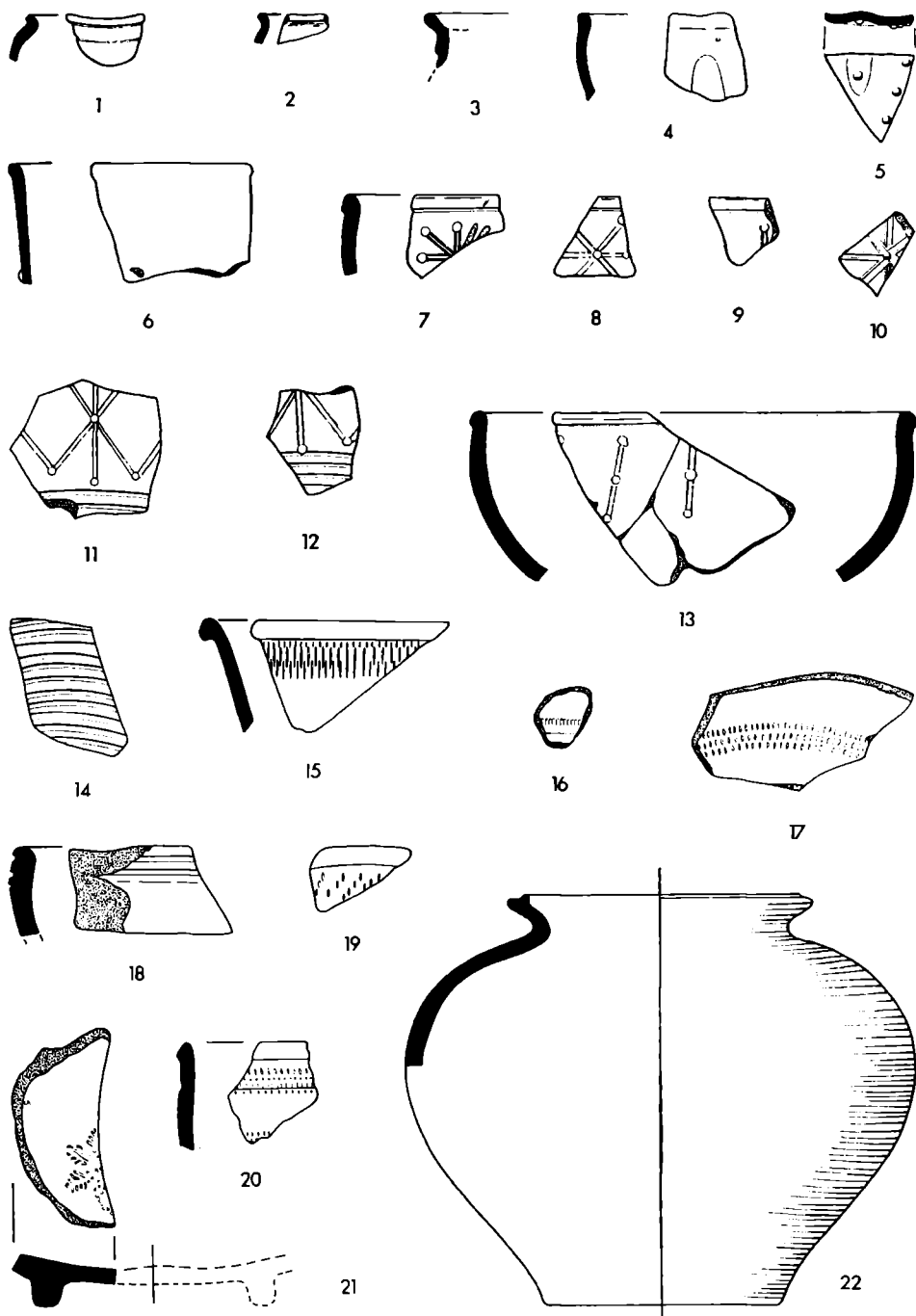
Bodenfragmente: *Bedřichovice I* (8), *Hrubčice* (6), *Lanžhot* (1,2,13), *Prosiměřice I* (4,7,10), *Rakvice I* (9), *Sokolnice* (5), *Vicemilice* (3,11,12). — Samml. MM Brno (3,5,6,8,9,11,12), KP UJEP Brno (4,7,10), M. Zirkel Lanžhot (1,2,13). — M. 1 : 3.



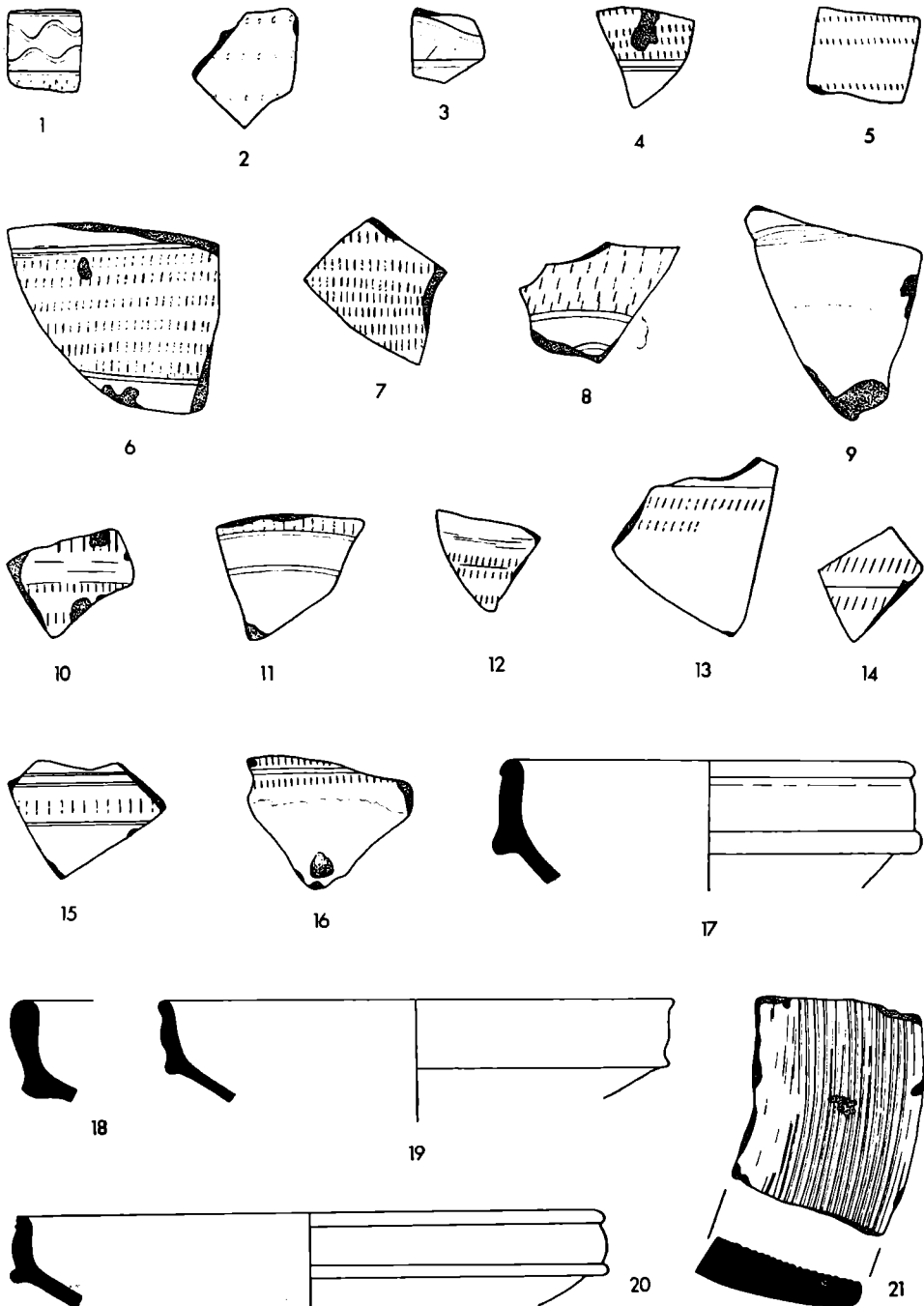
Bodenfragmente: *Prosiměřice I* (6,12,14), *Slavkov u Brna - Umgebung* (3), *Vicemilice* (1,2,5, 7-11,13,15-21), *Vrchoslavice* (4). — Samml. MM Brno (1,2,5,7-11,13,15-21), KP UJEP Brno (6,12,14), M Kojetín (4), M Slavkov u Brna (3). — M. 1 : 3.



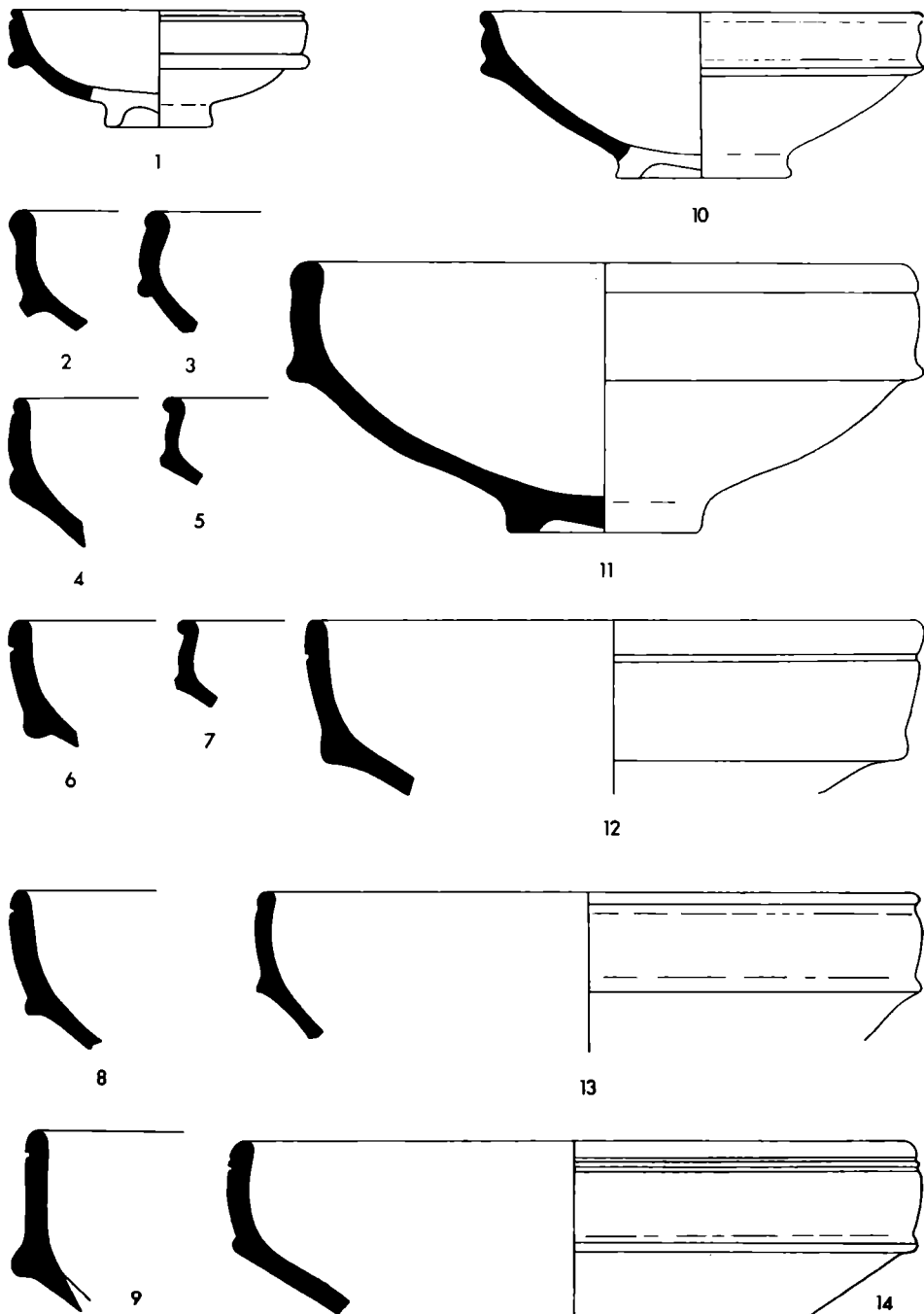
Bodenfragmente und Henkel: *Blažovice* (20), *Černčín* (17), *Drásov* (15), *Dubňany* (23), *Hrubčice* (4,25), *Hrušky* (24), *Jiřkovice* (16,21), *Prosiměřice I* (6-8,11,22), *Slatinice II* (3), *Vicemilice* (2,5,9,10,12-14), *Vlčnov I* (1,18,19). — Samml. MM Brno (1,2,5,9,10,12-21,23-25), KP UJEP Brno (6-8,11,22), M Olomouc (3,4). — M. 1 : 3.



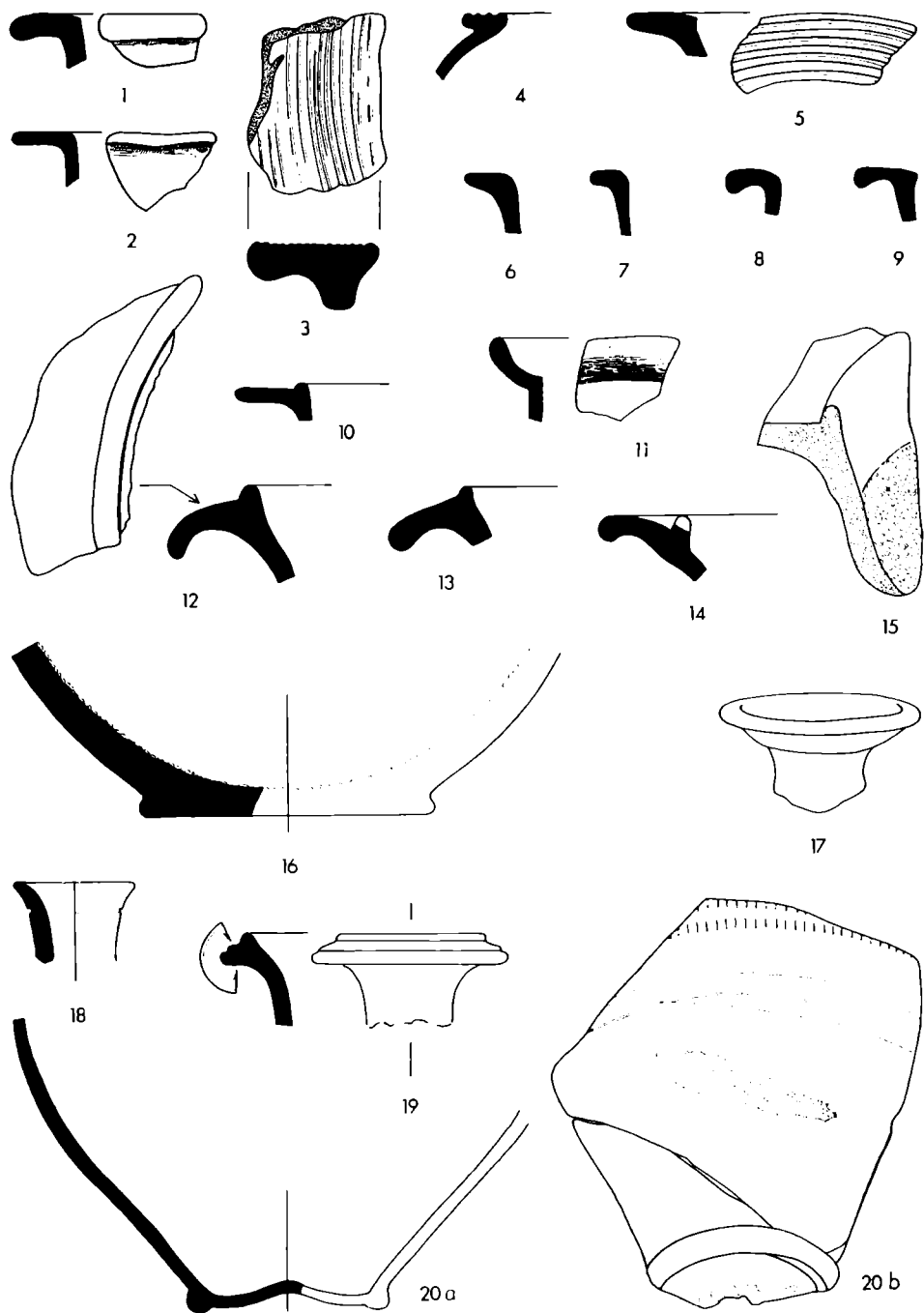
Provinzialrömische Keramik: Blažovice (1), Blučina (5), Brodek u Prostějova (10), Horní Dunajovice-Domčice (3), Hrubčice (18), Hrušky (17), Prosiměřice I (4), Prosiměřice II (16), Uherský Brod I (19, vielleicht auch 2), Určice I (20), Velké Hostěrádky (21), Vicemilice (6-9,11-14,22), unbekannte Fundstelle (15). — Samml. MM Brno (1-3,5-9,11-15,17,21,22), AÚ CSAV Brno (4), KP UJEP Brno (16), M Olomouc (20), M Prostějov (10,18), M Uherský Brod (19). — M. 1 : 3. [4 nach J. Tejral, 19 nach Jan Pavelčík.]



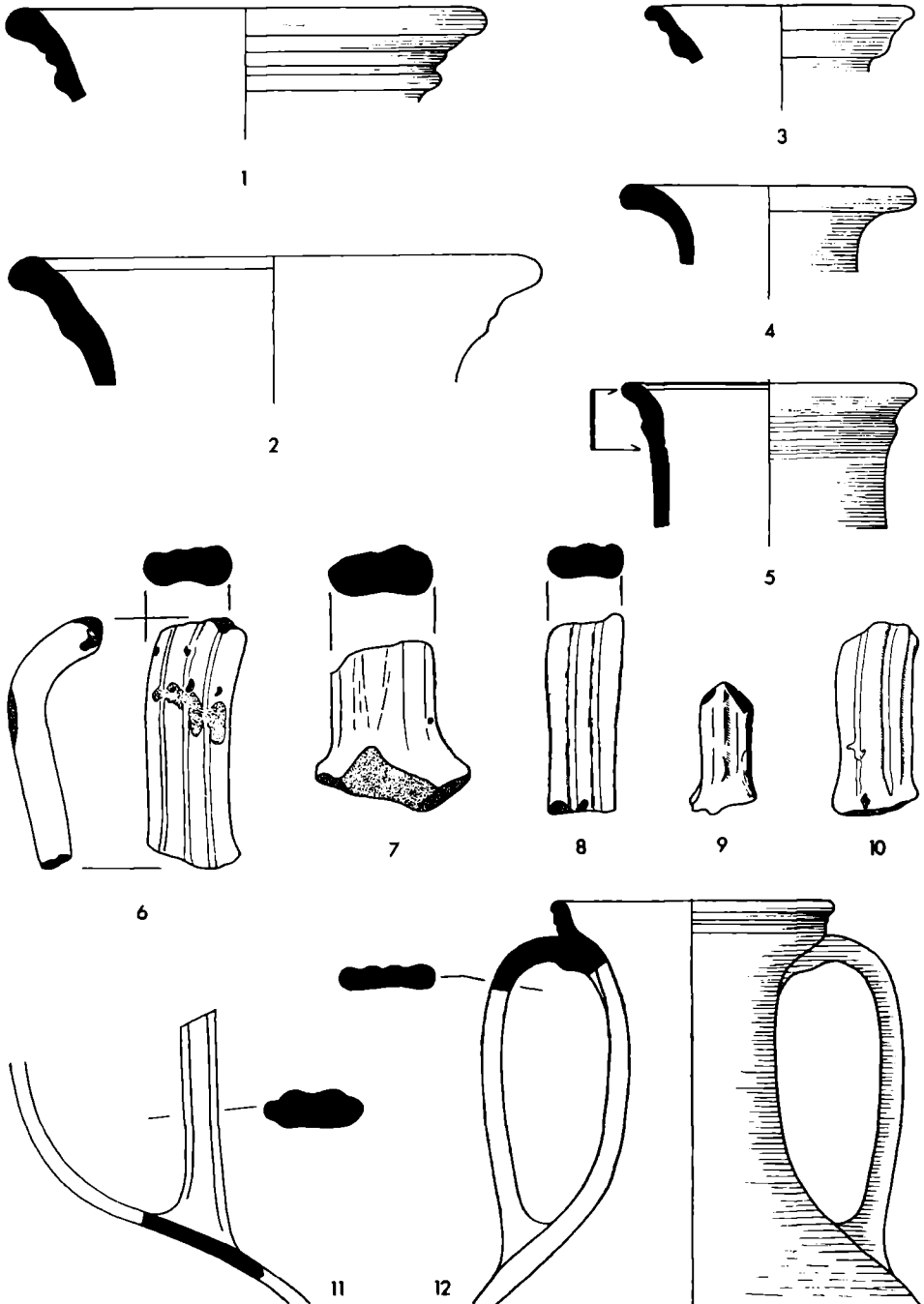
Provinzialrömische Keramik: *Brodek u Prostějova* (1,2,7-10), *Držovice* (4-6,12-16), *Hrubčice* (11), *Kostelec na Hané* (19), *Oblekovice-Bohumilice* (3), *Rakvice I* (20), *Slavkov u Brna - Umgebung* (17), *Vicemilice* (18), *Vlčnov I* (21). — Samml. KP UJEP Brno (3), MM Brno (18,20,21), M Olomouc (4-6,12-15,19), M Prostějov (1,2,7-11,16), M Slavkov u Brna (17). — M. 1 : 3.



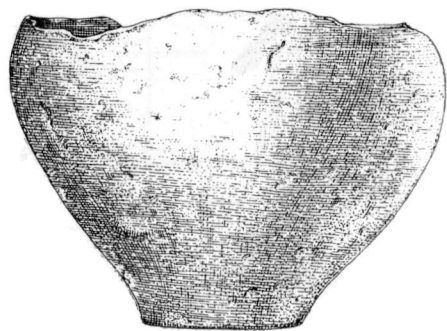
Provinzialrömische Ringschüsseln: *Držovice* (2,7), *Hrádek* (4), *Jaroslavice* (13), *Kobylnice II* (3), *Lanžhot* (5,6), *Petrov* (14), *Rakvice I* (12), *Valtice* (1), *Vicemilice* (8,10,11), *Vlčnov I* (9). — Samml. MM Brno (4,8-14), KP UJEP Brno (3), M-Zirkel Lanžhot (5,6), M Mikulov (1), M Olomouc (2,7). — M. 1 : 3.



Provincialrömische Keramik: *Bezměrov* (20), *Brodek u Prostějova* (4), *Prosiměřice I* (17), *Prosiměřice II* (15,16), *Slavkov u Brna - Umgebung* (19), *Syrovice* (12), *Uherský Brod I* (1,2,5-11), *Vicemilice* (18), *Vlčnov I* (3,13,14). — Samml. MM Brno (3,12-14,18,20), KP UJEP Brno (15,16), AÚ ČSAV Brno (17), M Prostějov (4), M Slavkov u Brna (19), M Uherský Brod (1,2,5-11). — M. 1 : 3. [1,2,5-11 nach Jan Pavelčík, 17 nach J. Tejral.]



Provinzialrömische Keramik: *Ladná* (2), *Prosiměřice I* (6-9,11), *Tvarožná II* (10), *Vicemilice* (1,3-5,12). — Samml. MM Brno (1,3-5,10,12), KP UJEP Brno (2,6-9,11). — M. 1 : 3.



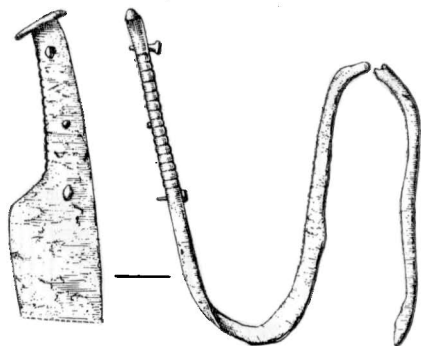
1



2



3



4



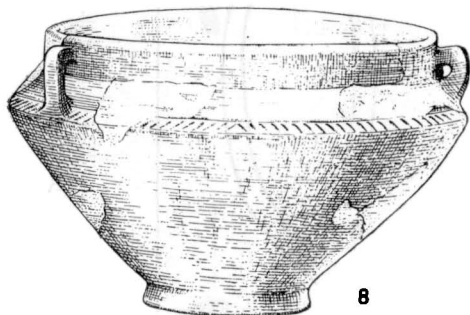
5



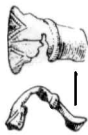
6



7



8



9



10

Vávrovice (Bez. Opava), Brandgrab 1 (1-7) und Brandgrab 2 (8-10). — Samml. M Opava (8-10); übrige Funde verschollen. — M. etwa 1 : 4,5 (1,4,8), etwa 1 : 3 (2,3,5-7 und 10 aus Eisen, 9 aus Bronze). [Nach L. Franz.]



1



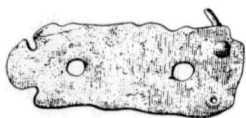
2



3



4



5



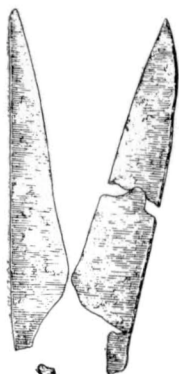
6



7



8



12



13



9



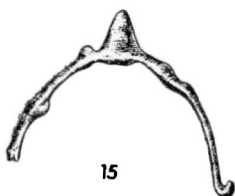
10



11



14



15



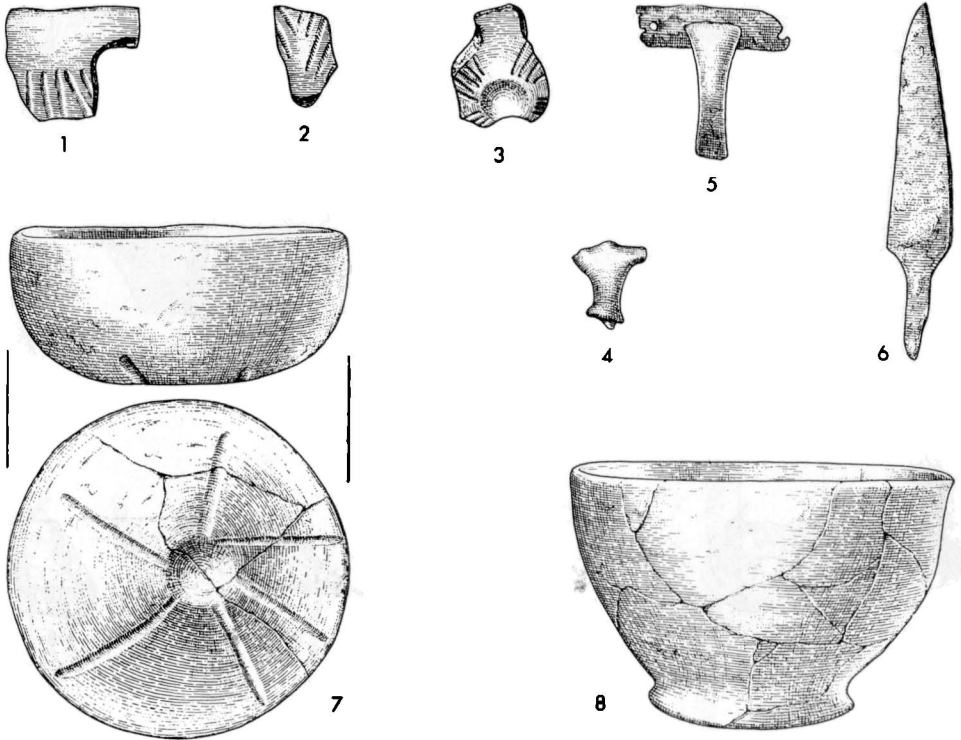
16



17

Vávrovice (Bez. Opava), Brandgrab 3 (1-5) und Brandgrab 4 (6-17). — Samml. M Opava (12,13,16,17); übrige Funde verschollen. — M. etwa 1 : 4,5 (1), etwa 1 : 3 (eiserne Gegenstände 2-5 und 12-17), ? (Sigillata-Scherben 6-11). [Nach L. Franz.]

LXVI



Vávrovice (Bez. Opava), Brandgrab 5 (1-8). — Samml. M Opava (1,2,3,5,6); übrige Funde verschollen. — M. etwa 1 : 3 (1-8; 5 aus Bronze, 4 und 6 aus Eisen). [Nach L. Franz.]