

Tabulky

Sborník prací Filozofické fakulty brněnské univerzity. E, Řada archeologicko-klasická. 1968, vol. 17, iss. E13, pp. I-XXIX

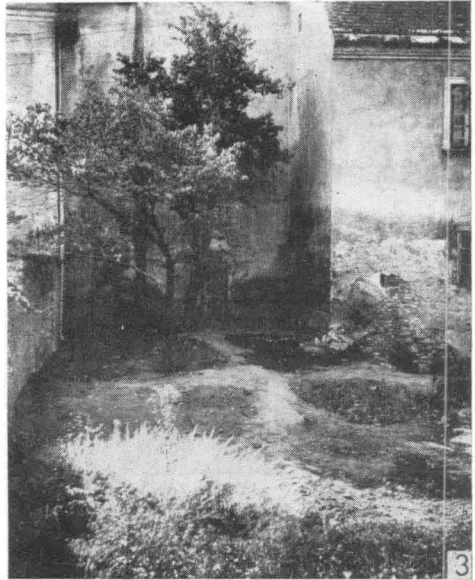
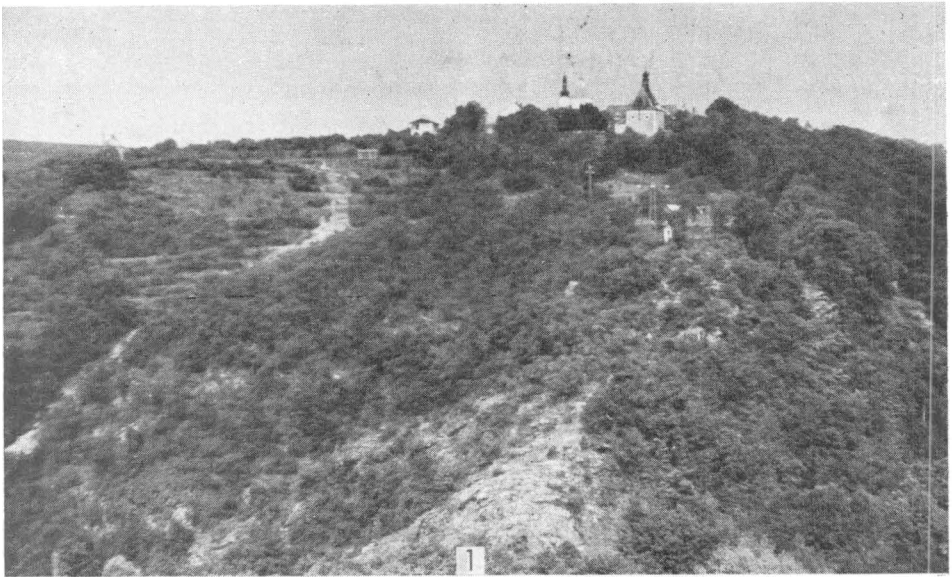
Stable URL (handle): <https://hdl.handle.net/11222.digilib/109539>

Access Date: 28. 11. 2024

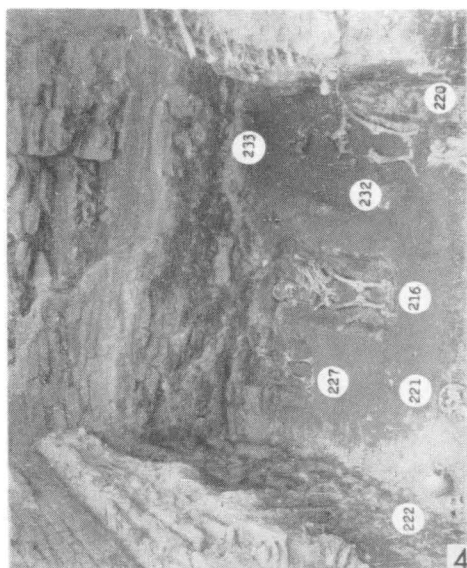
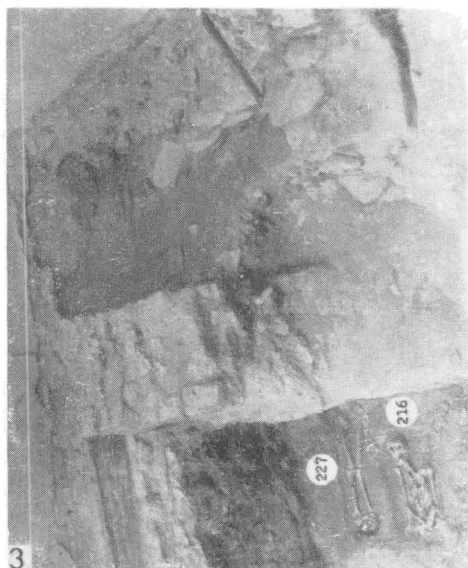
Version: 20220831

Terms of use: Digital Library of the Faculty of Arts, Masaryk University provides access to digitized documents strictly for personal use, unless otherwise specified.

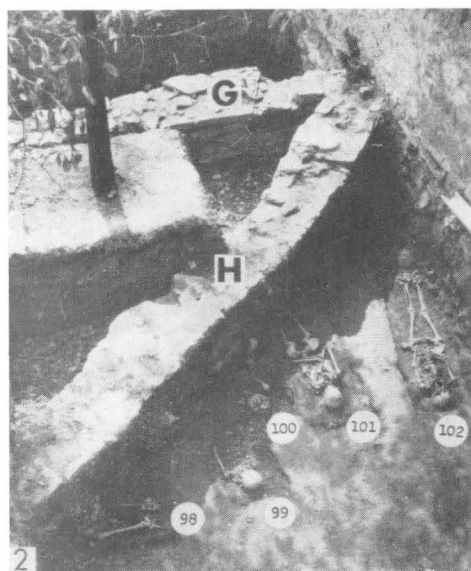
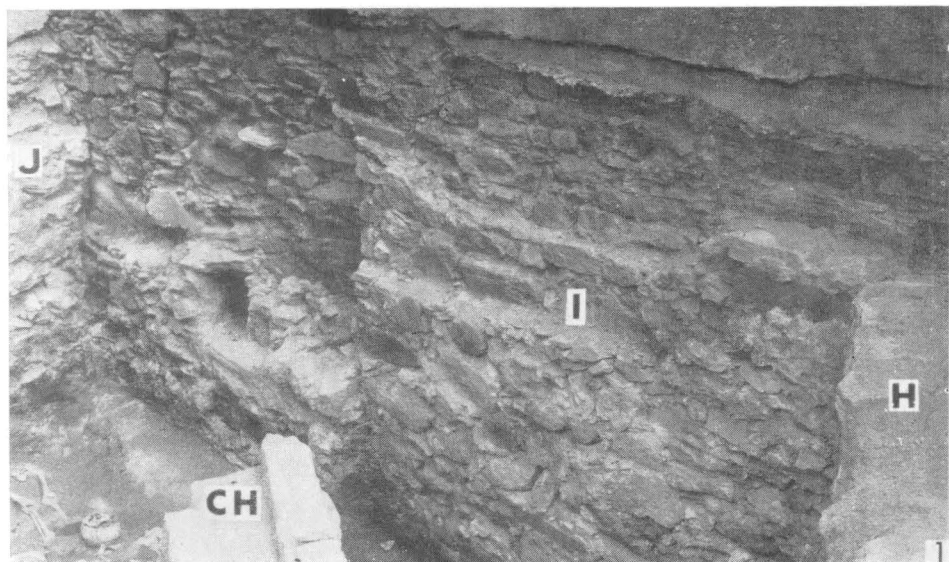
TABULKY



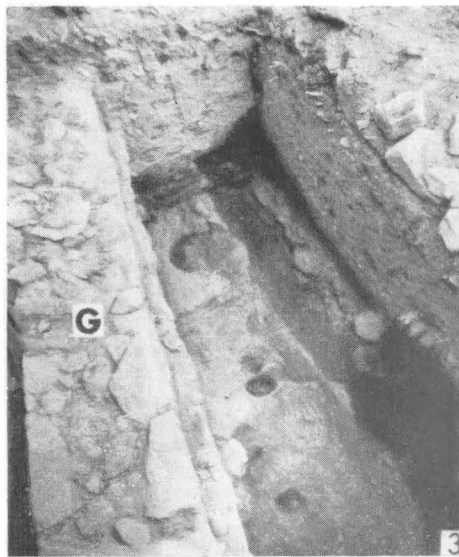
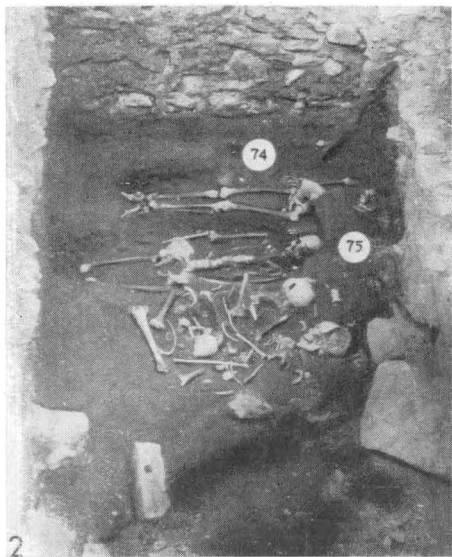
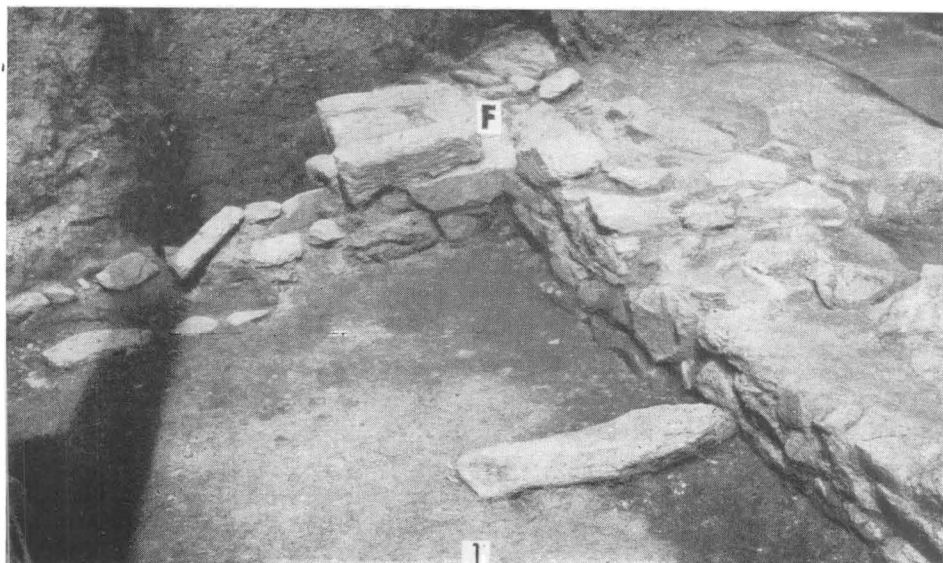
Taf. I. — Gesamtblick auf Znojmo-Hradiště (1); St. Hyppolit-Kirche in Hradiště (2); erforschte Fläche der Grabstätte im Garten der Propstei im Jahre 1957 (3). (Photo S. Ševčík.)



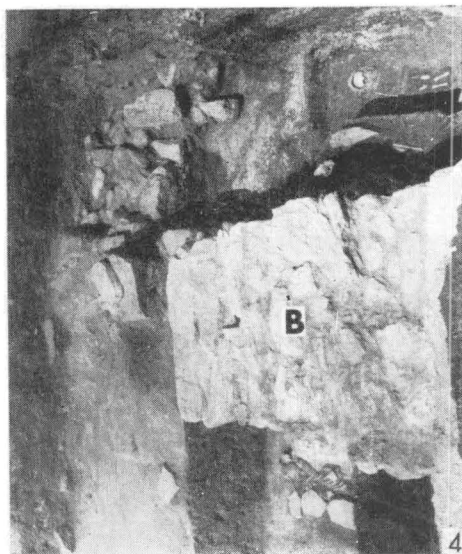
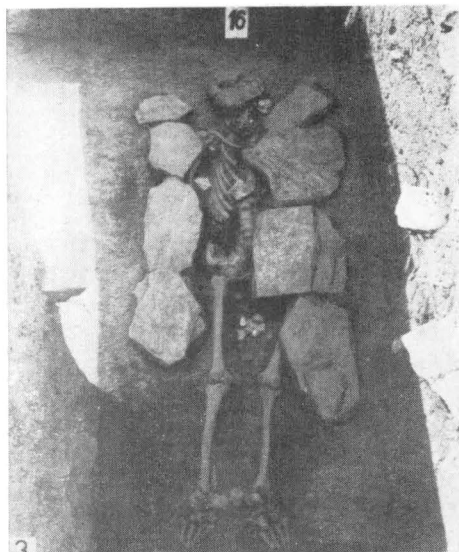
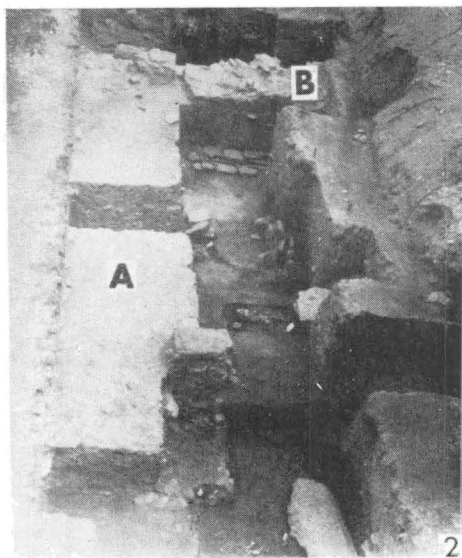
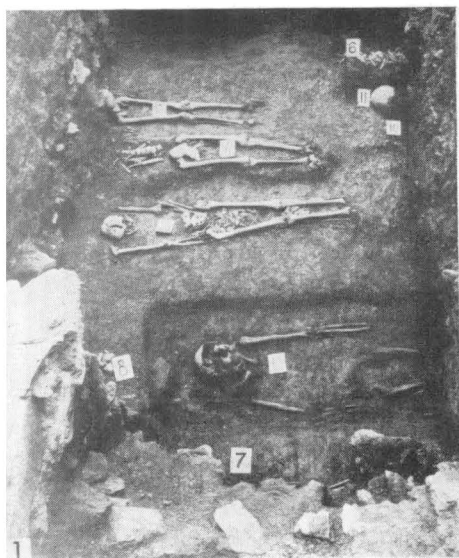
Taf. II. — Znojmo-Hradiště. Sonde IXf. Entdeckter Pflasterrest beim Presbyterium der St. Hyppolit-Kirche (1); Knochenniederlage Nr. 1 (2); Fundament der beseitigten Ecke L des Kirchenschiffes (3, 4). (Photo S. Ševčík.)



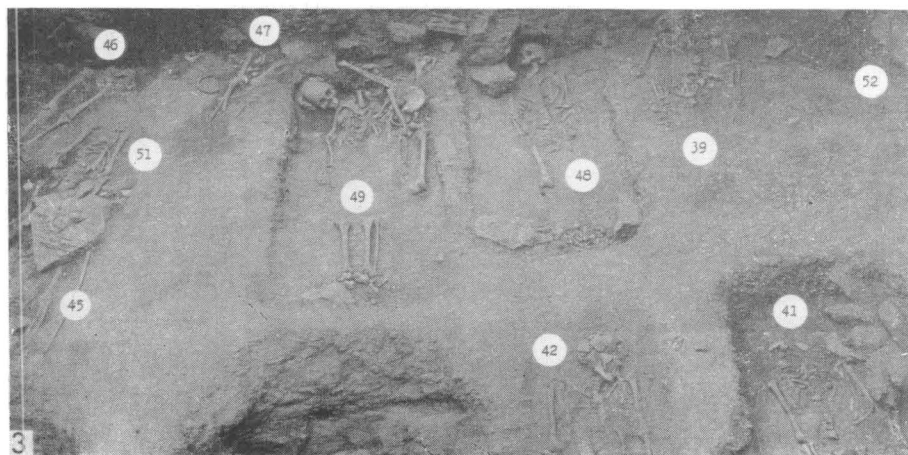
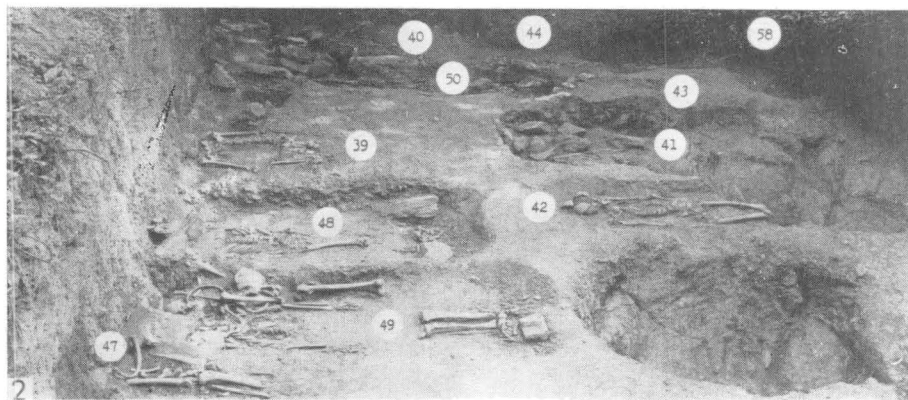
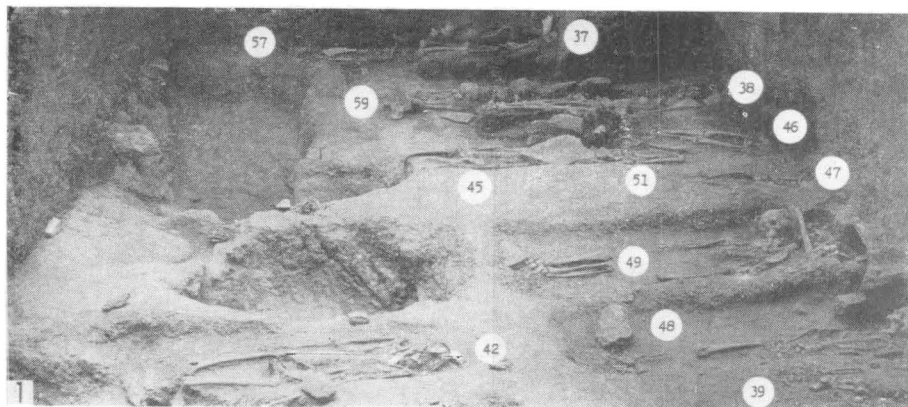
Taf. III. — Znojmo-Hradiště. Mauerwerk in der Sonde IXc : I — Fundament der Giebelwand des östlichen Traktes der Propstei mit Öffnung für die Wasserleitung; J — Fundament des zweiten unbedeutenden Kirchenturmes, durch einen Spalt von Mauerwerk I getrennt; H — späte Mauer; CH — Wasserleitung (1); Fundament der Friedhofsmauer G und einer rezenten Mauer H in der Sonde IXf mit den Gräbern des I. Horizonts (2); Fundament des Gebäudes F in der Sonde IX (3). (Photo S. Ševčík.)



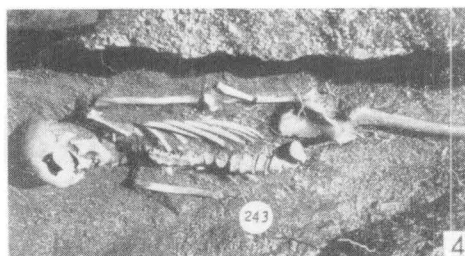
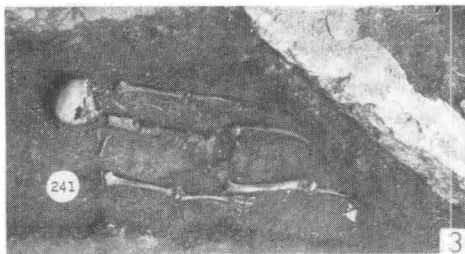
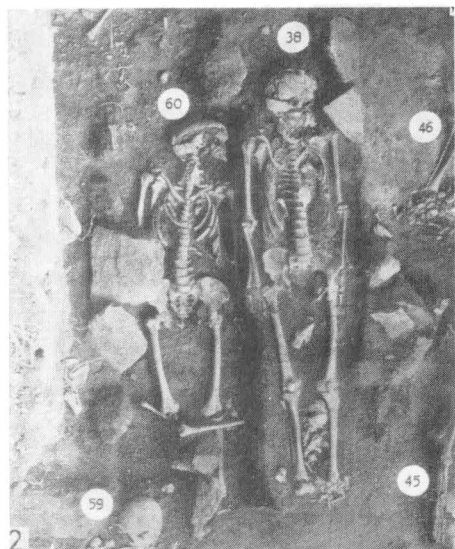
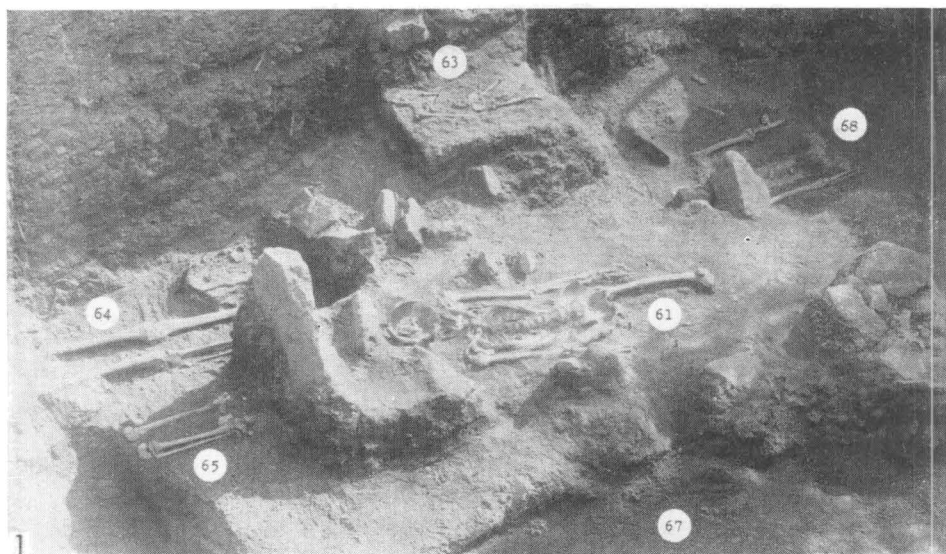
Taf. IV. — Znojmo-Hradiště. Fundamente des Gebäudes F in der Sonde VII (1); spätburgwallzeitliche Gräber in der Sonde IXd (2); der Rest eines hallstattzeitlichen Pfostenhauses Nr. 12 in der Sonde IXd (3). (Photo S. Ševčík)



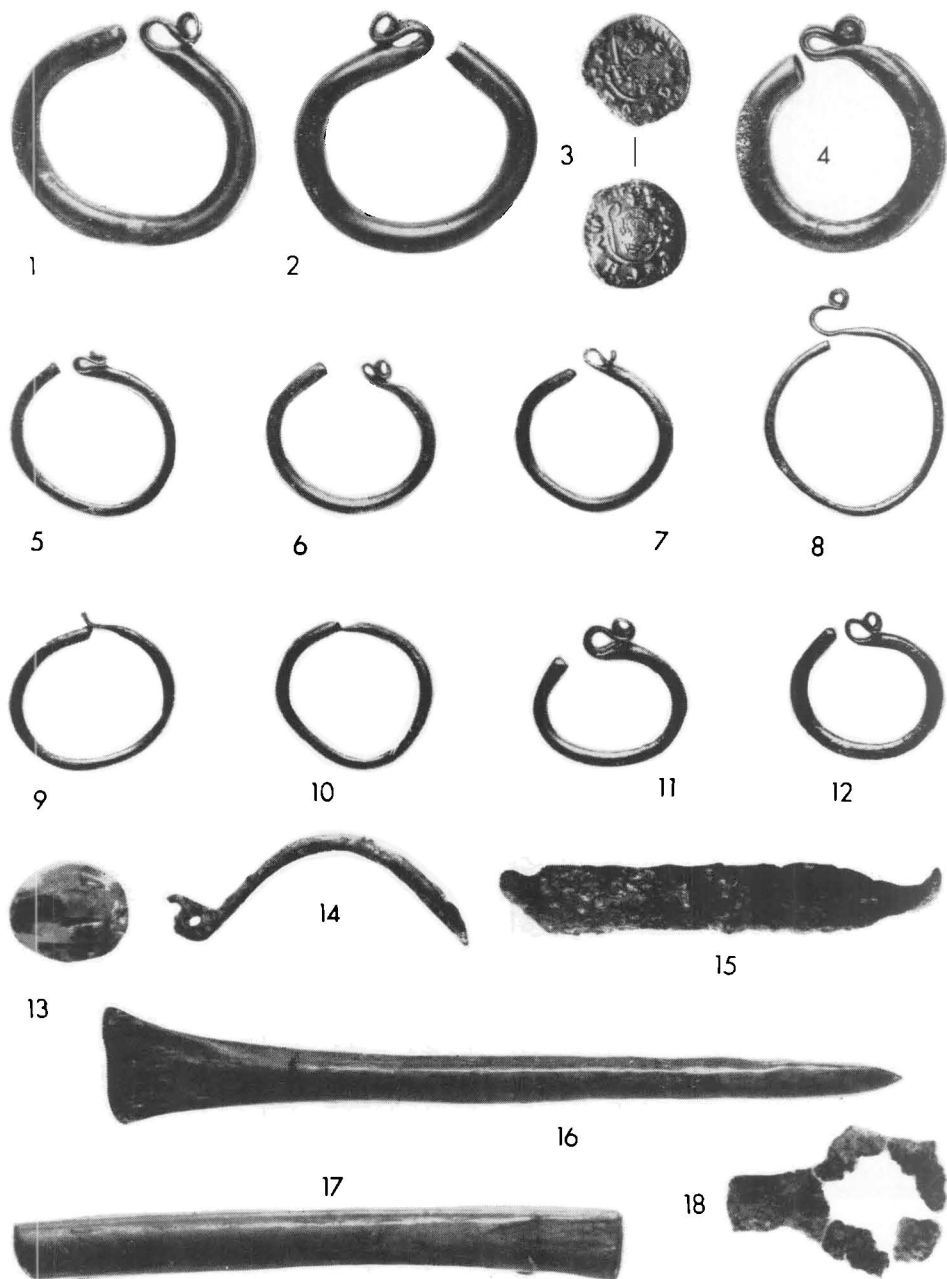
Taf. V. — Znojmo-Hradiště. Spätburgwallzeitliche Gräber in der Sonde F vom Jahre 1950 (1); Mauerwerk und entdeckte Gräber in der Sonde F im Jahre 1951 (2, 4); Grab 16 mit Steineinfassung (3). (Photo S. Ševčík.)



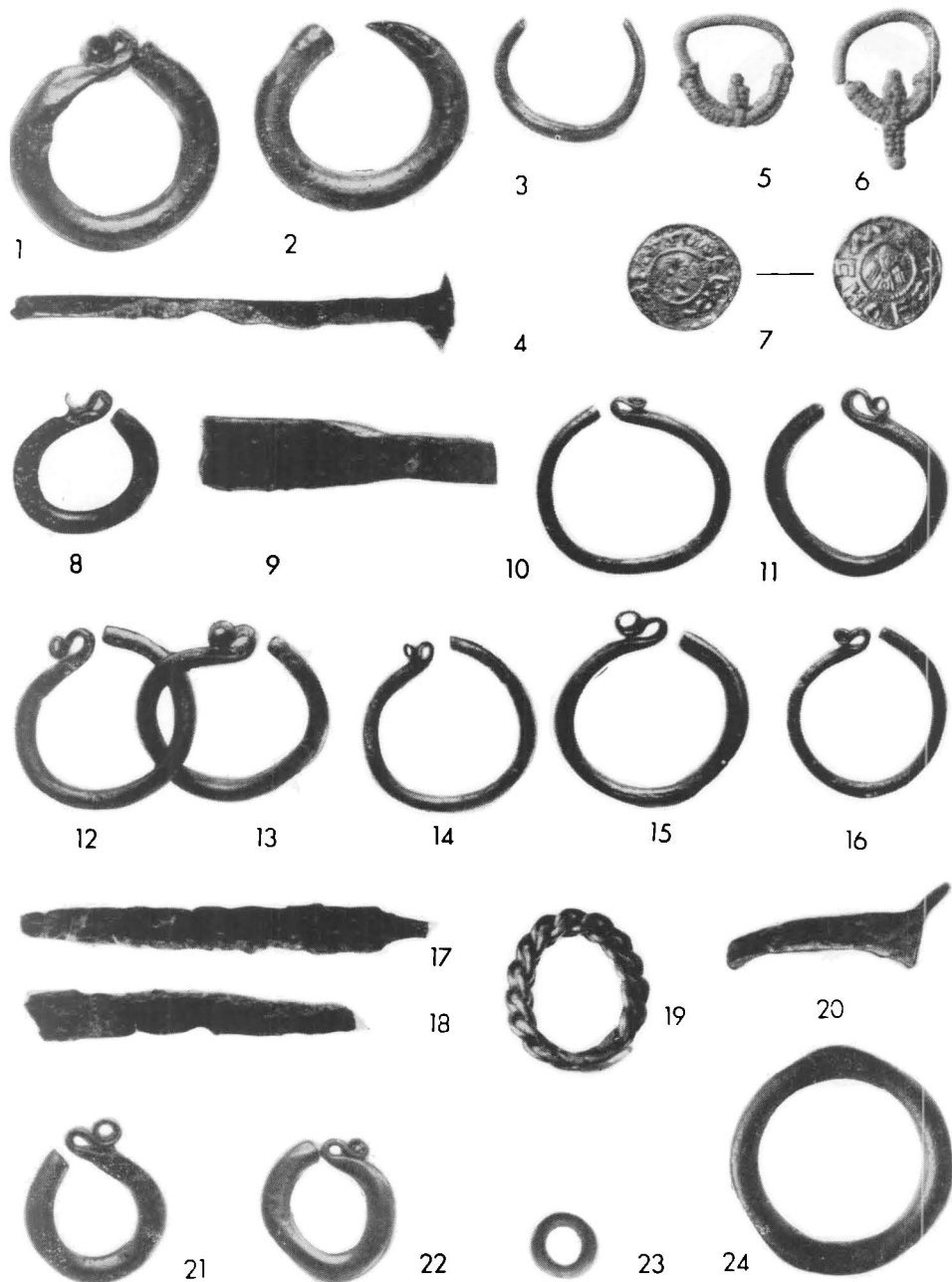
Taf. VI. — Znojmo-Hradiště. Sonde VIII. Spätburgwallzeitliche Gräber, Blick vom Norden (1), Süden (2) und Osten (3). (Photo S. Ševčík.)



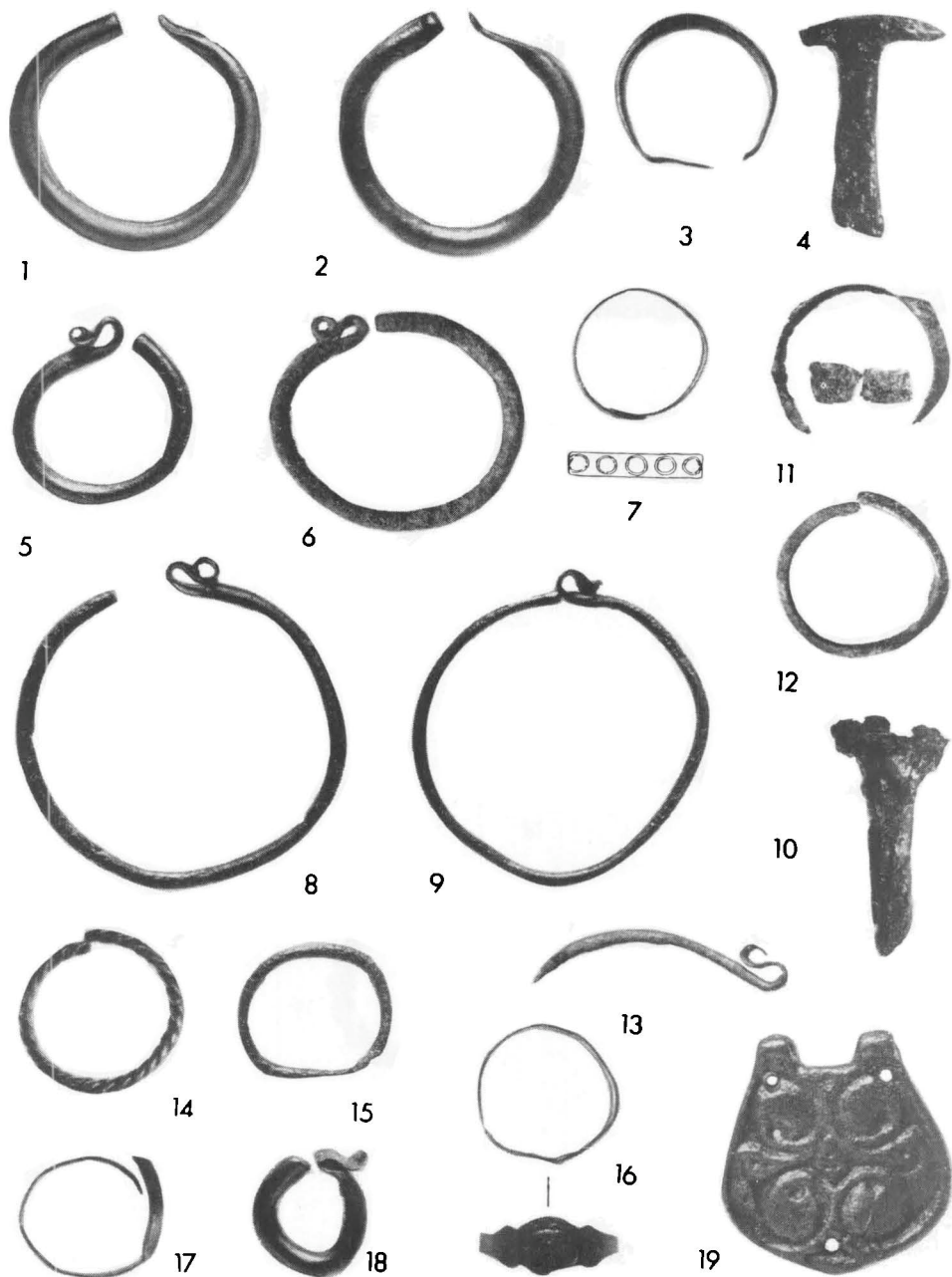
Taf. VII. — Znojmo-Hradiště. Spätburgwallzeitliche Gräber in der Sonde IXa, b (1); Gräber mit Steineinfassung in der Sonde VIII (2); die untersten Gräber in der Sonde IXf (3, 4). (Photo S. Ševčík.)



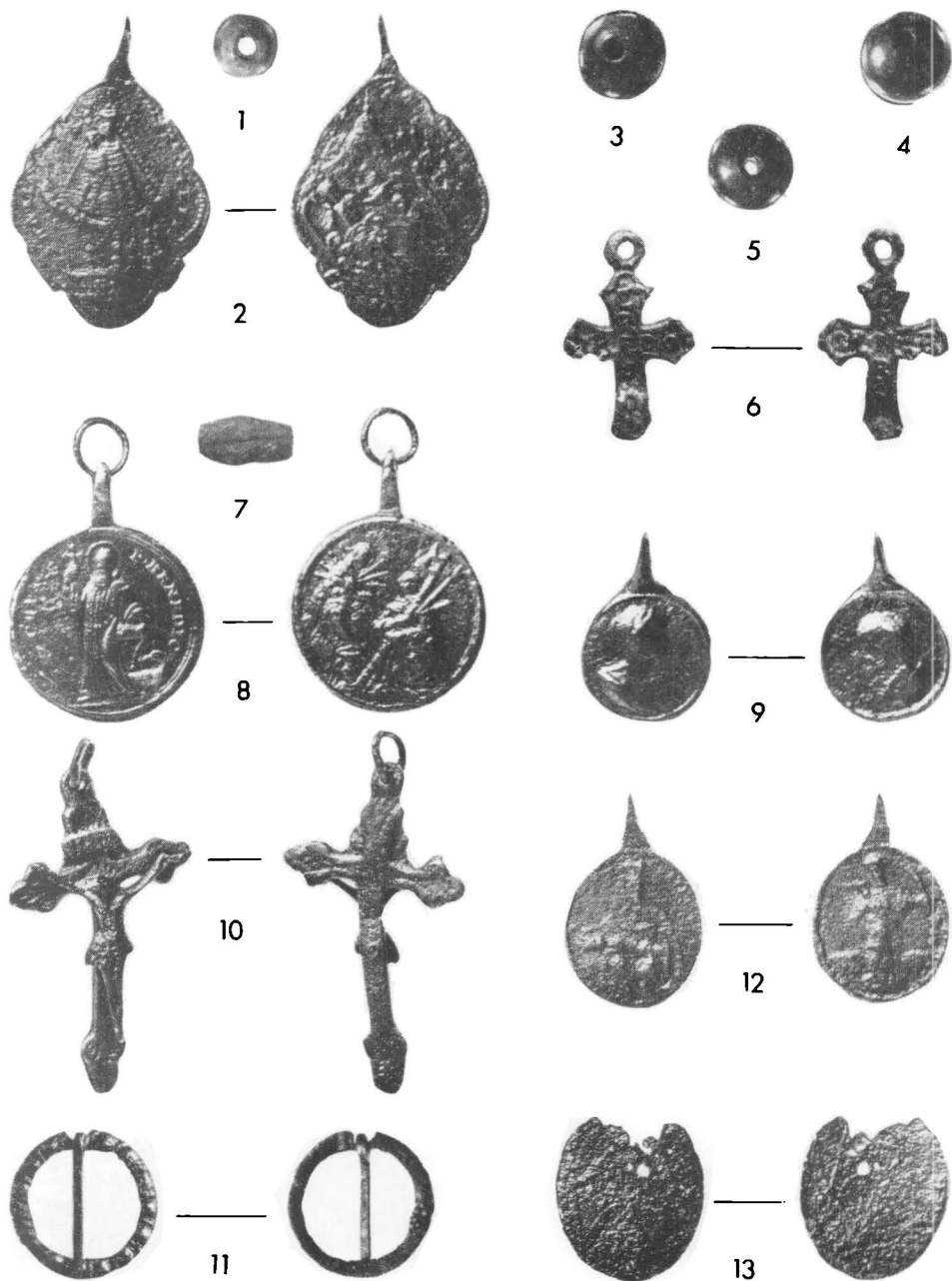
Taf. VIII. — Znojmo-Hradiště. Beigaben aus den spätpurgwallzeitlichen Gräbern. Gr. 3 (1, 2); Gr. 6 (3); Gr. 10 (5-12); Gr. 12 (4); Gr. 16 (13, 14); Gr. 17 (17, 18); Gr. 18 (15); Gr. 20 (16). (Photo S. Ševčík.)



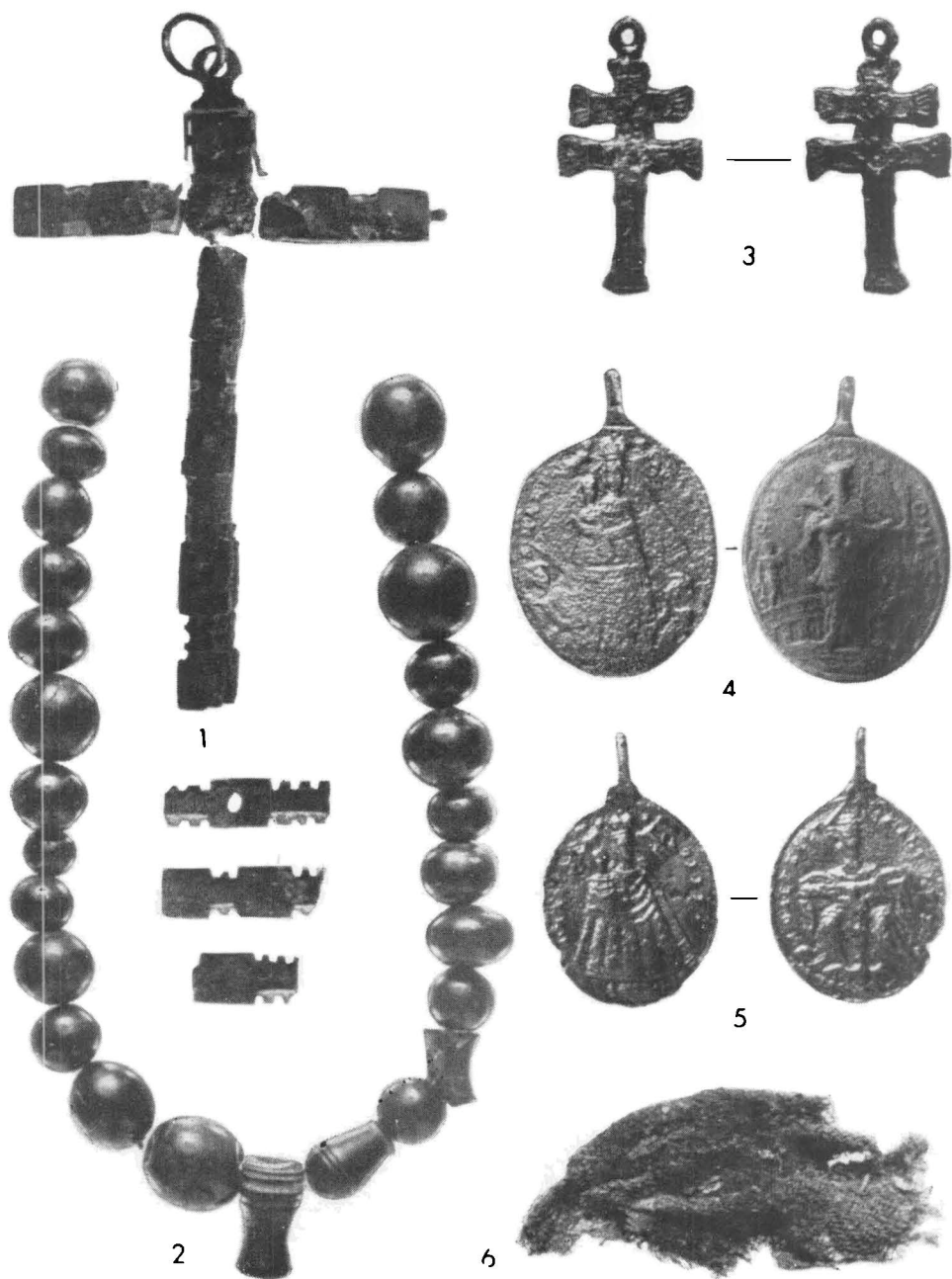
Taf. IX. — Znojmo-Hradiště. Beigaben aus den spätburgwallzeitlichen Gräbern. Gr. 21 (1-4); Gr. 22 (5, 6); Gr. 29 (7); Gr. 30 (8, 9); Gr. 32 (12-16); Gr. 33 (10, 11); Gr. 34 (17, 18); Gr. 35 (19, 20); Gr. 41 (23, 24); Gr. 48 (21, 22). (Photo S. Ševčík.)



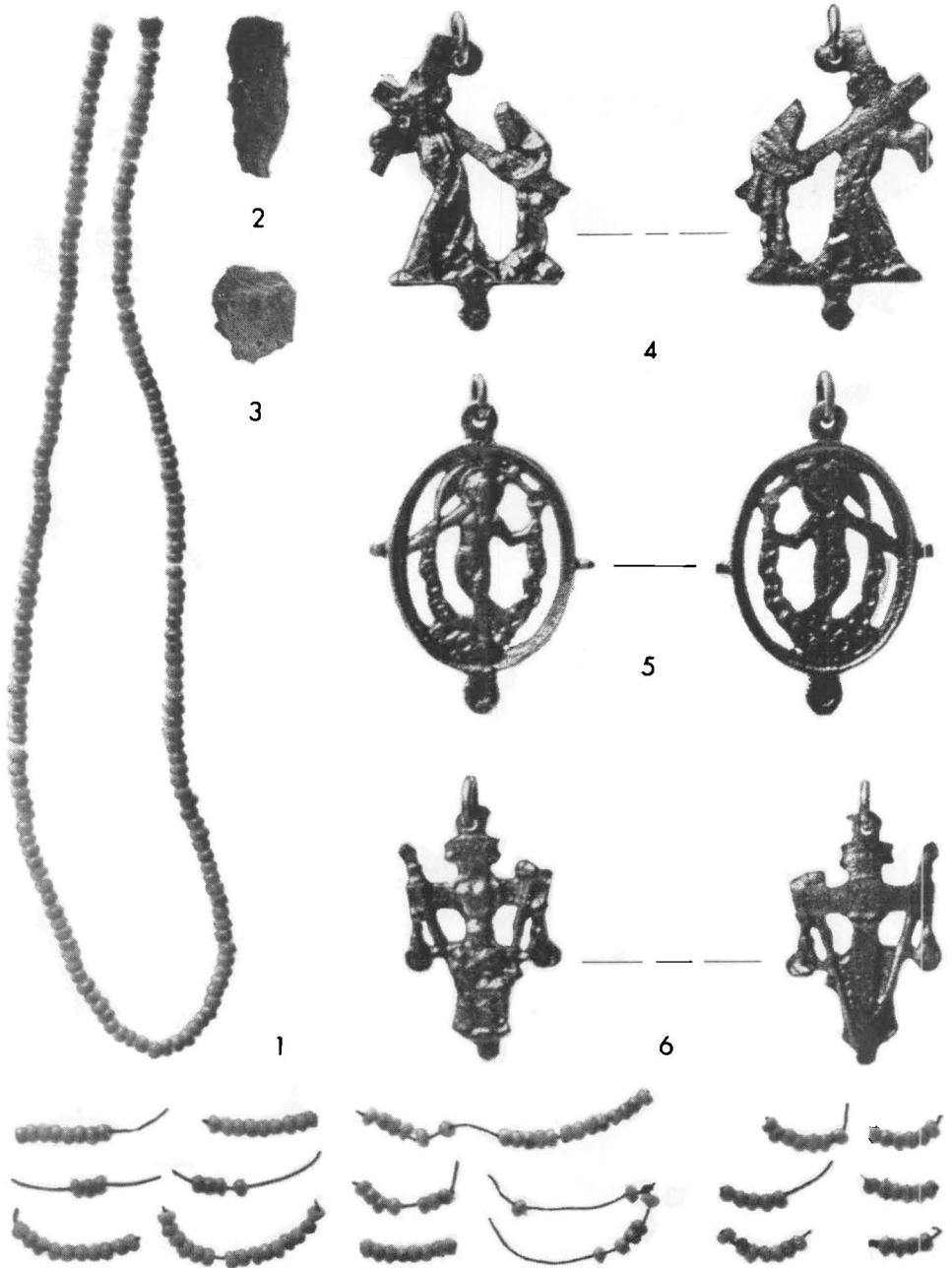
Taf. X. — Znojmo-Hradiště. Beigaben aus den spätburgwallzeitlichen Gräbern. Gr. 58 (1–3); Gr. 61 (5); Gr. 62 (4); Gr. 73 (8–10); Gr. 74 (7); Gr. 75 (6); Gr. 216 (13); Gr. 220 (11); Gr. 240 (12). Streufunde aus vernichteten Gräbern in der Sonde III (15, 16, 18, 19), Sonde VII, Obj. 3 (14) und Sonde VIII (17). (Photo S. Ševčík.)



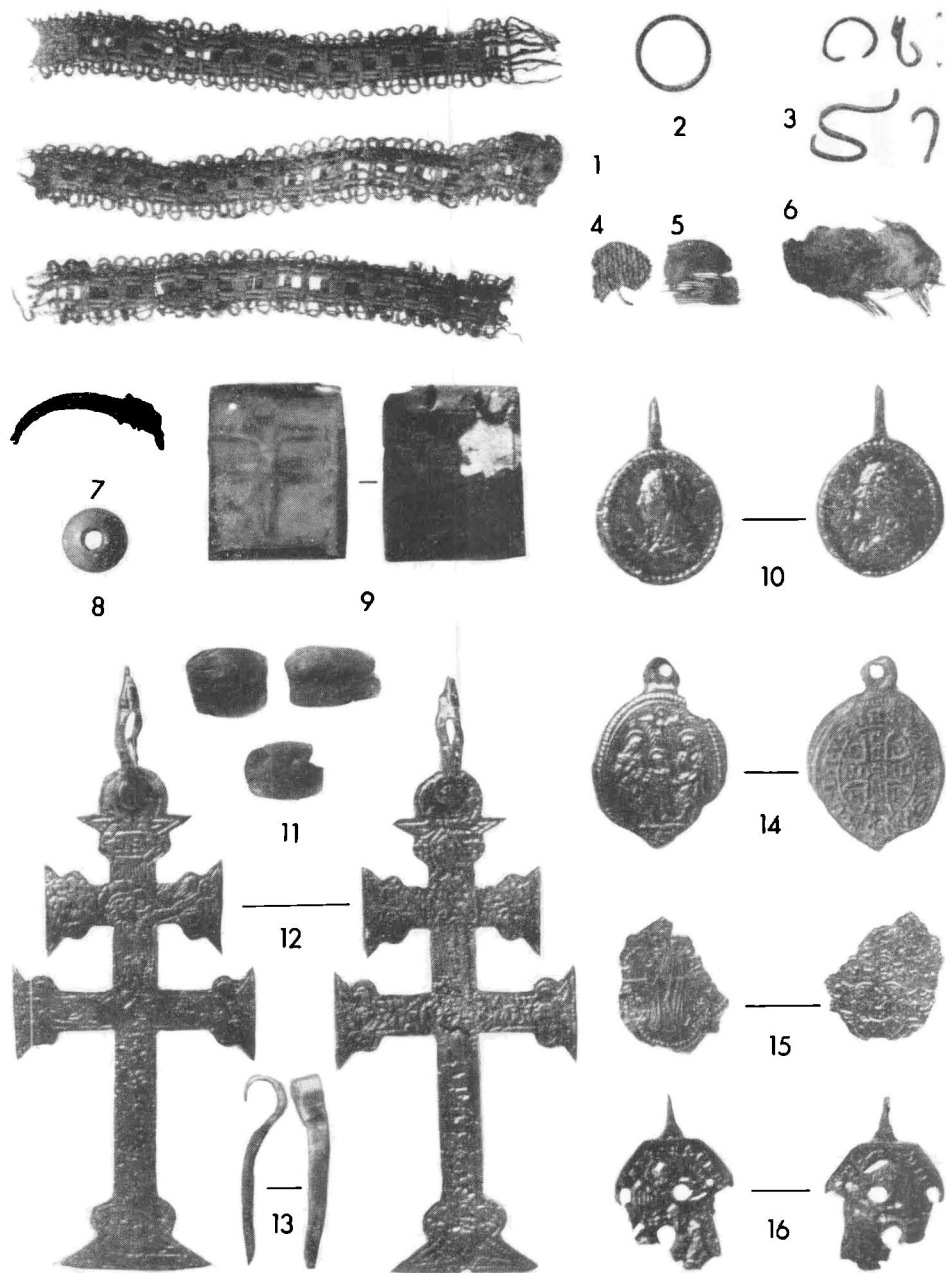
Taf. XI. — Znojmo-Hradiště. Beigaben aus den neuzeitlichen Gräbern. Gr. 80 (1, 2); Gr. 81 (3, 4); Gr. 82 (7, 8); Gr. 84 (5, 6); Gr. 85 (9); Gr. 88 (10, 11); Gr. 91 (12); Gr. 92 (12). (Photo S. Ševčík.)



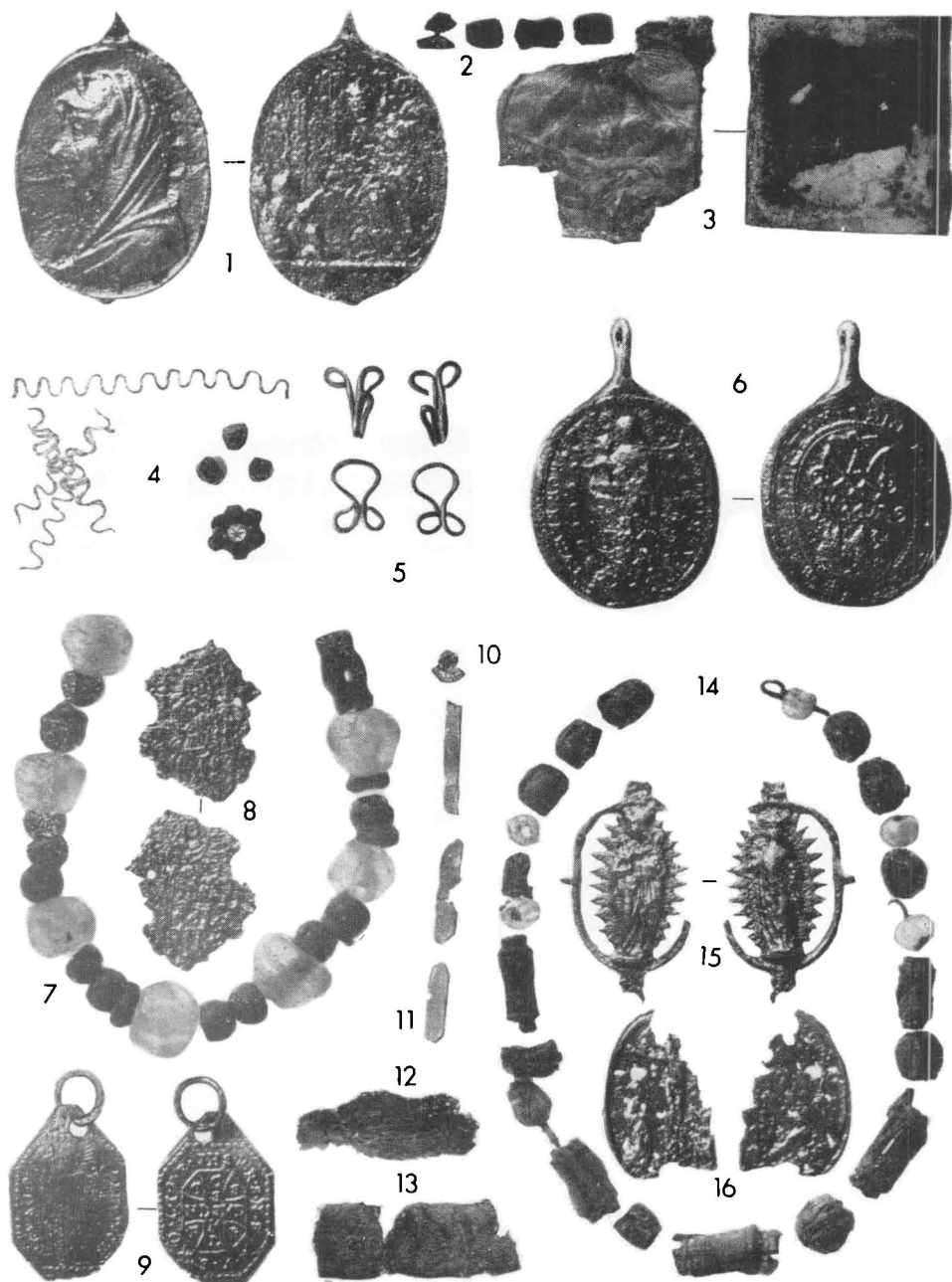
Taf. XII. — Znojmo-Hradiště. Beigaben aus den neuzeitlichen Gräbern; Gr. 89 (1, 2); Gr. 94 (6); Gr. 97 (3); Gr. 101 (4); Gr. 104 (5). (Photo S. Ševčík.)



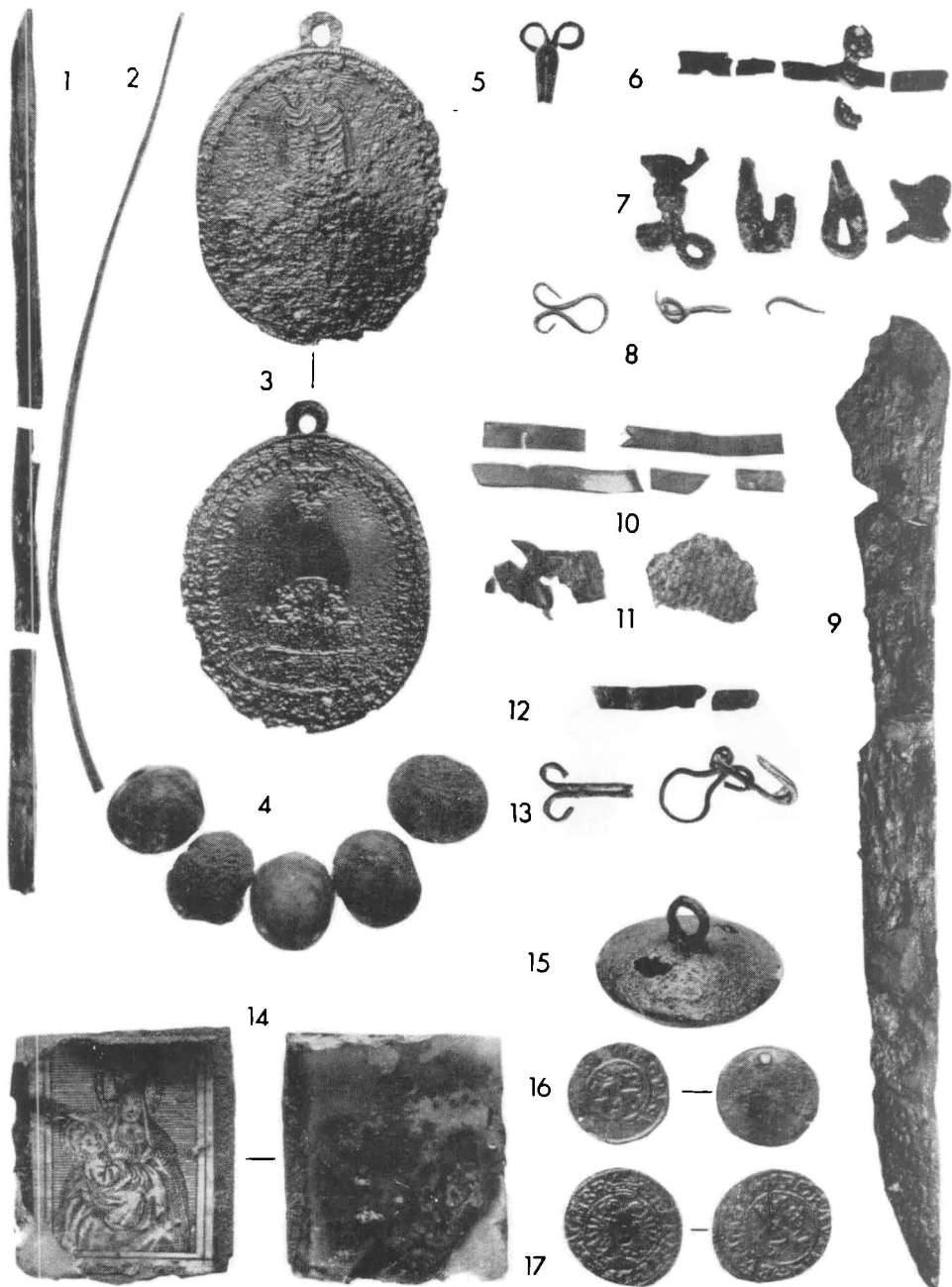
Taf. XIII. — Znojmo-Hradiště. Beigaben aus dem neuzeitlichen Grab 95. (Photo S. Ševčík.)



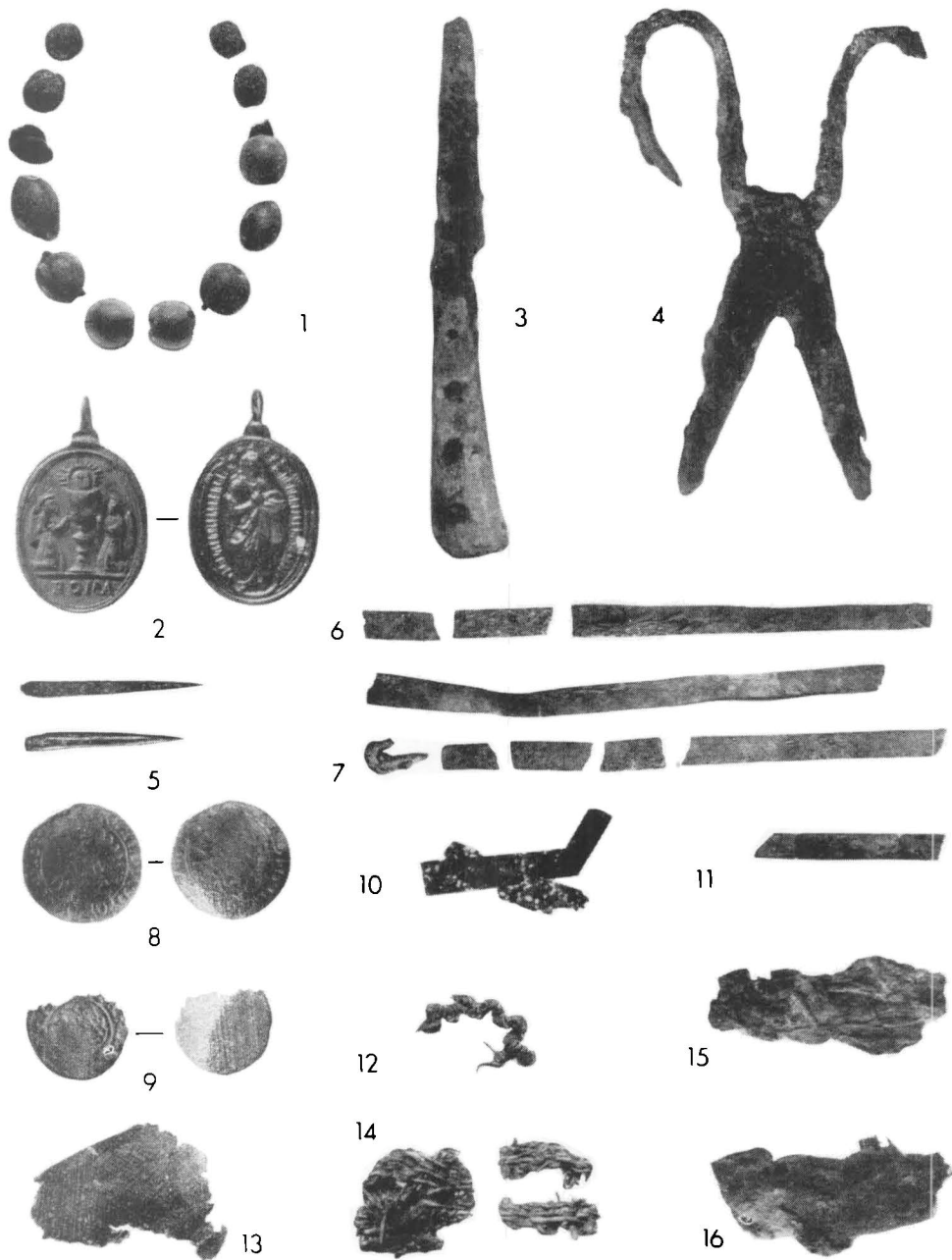
Taf. XIV. — Znojmo-Hradiště. Beigaben aus den neuzeitlichen Gräbern. Gr. 106 (7); Gr. 109 (9); Gr. 110 (1-6); Gr. 115 (10); Gr. 116 (11-16); Gr. 119 (8). (Photo S. Ševčík.)



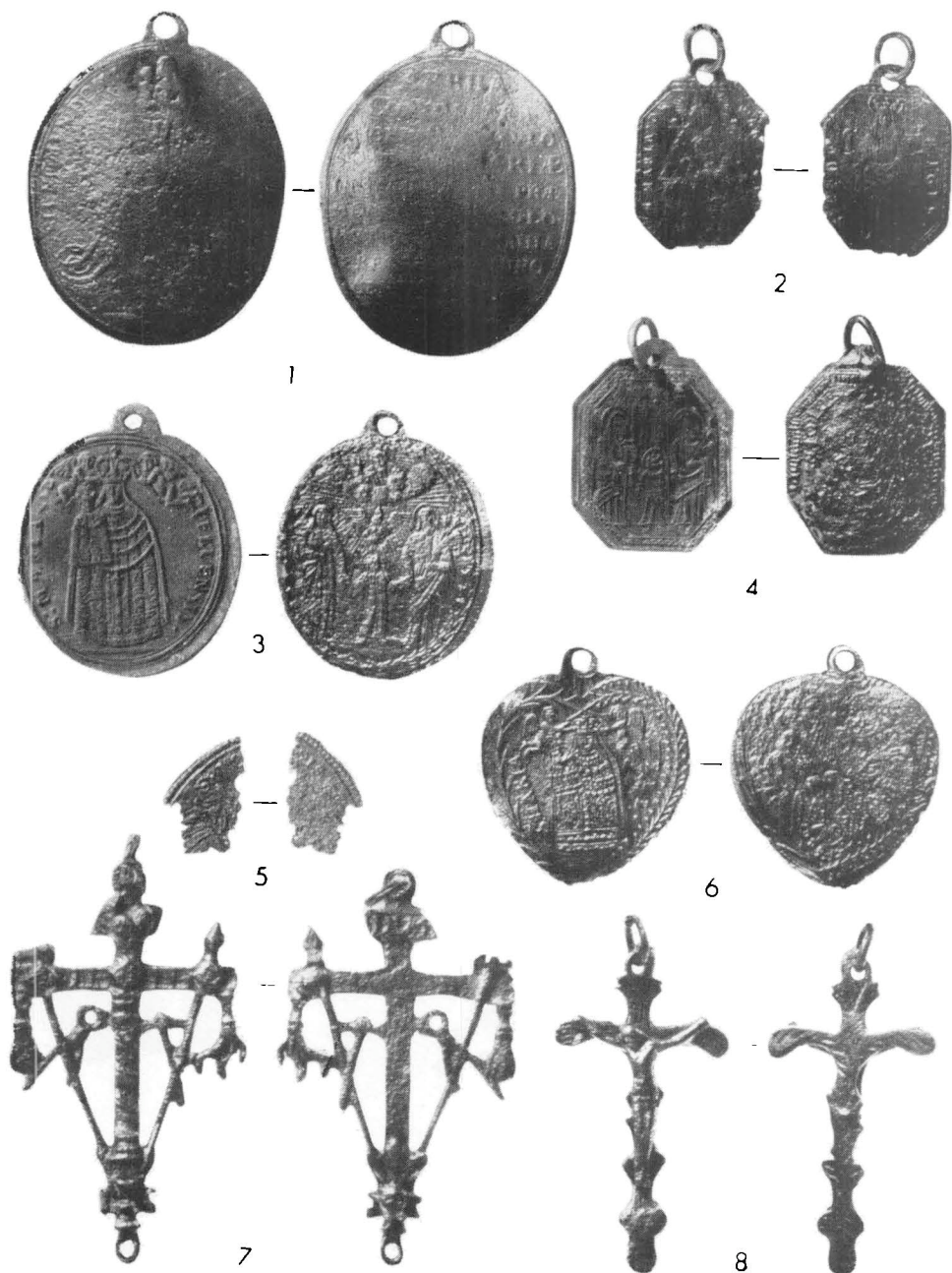
Taf. XV. — Znojmo-Hradiště. Beigaben aus den neuzeitlichen Gräbern. Gr. 122 (1–3); Gr. 127 (4–5); Gr. 129 (7–9); Gr. 134 (6); Gr. 137 (14–16); Gr. 143 (10–13). (Photo S. Ševčík.)



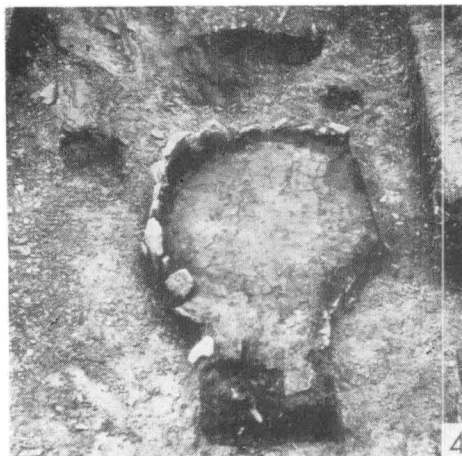
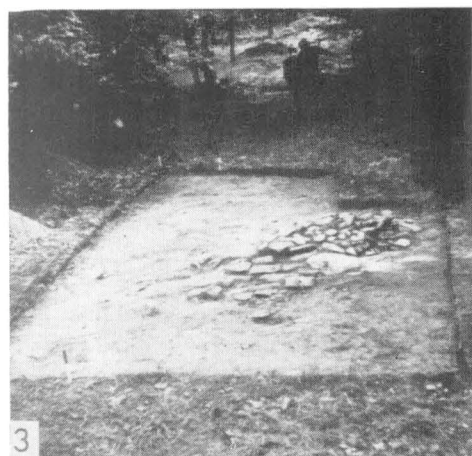
Taf. XVI. — Znojmo-Hradiště. Beigaben aus den neuzeitlichen Gräbern. Gr. 154 (1-4); beim Gr. 169 (14); Gr. 176 (5, 6); Gr. 182 (7-9); Gr. 185 (10, 11); Gr. 186 (12, 13); aus den vernichteten Gräbern in der Sonde IX (16, 17) und Sonde IXc (15). (Photo S. Ševčík.)



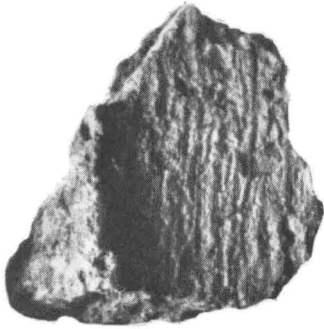
Taf. XVII. — Znojmo-Hradiště. Beigaben aus den neuzeitlichen Gräbern. Gr. 201 (1-4); Gr. 213 (5); Gr. 217 (6, 7). Aus den vernichteten Gräbern und aus der Aufschüttungsschicht in der Sonde F (8), VIII (9), IX (10), IXc (15, 16), IXf (11-14). (Photo S. Ševčík.)



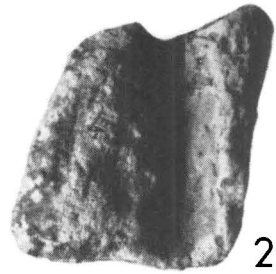
Taf. XVIII. — Znojmo-Hradiště. Medaillen und Kreuzchen aus den vernichteten Gräbern.
(Photo S. Ševčík.)



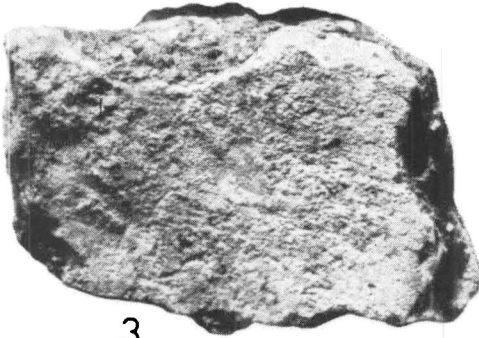
Tab. XIX. — Plaveč-Šance. Průběh vnitřního valu (1), řez A vnitřního valu (2), sonda I-A (3) a sonda I-J (4).



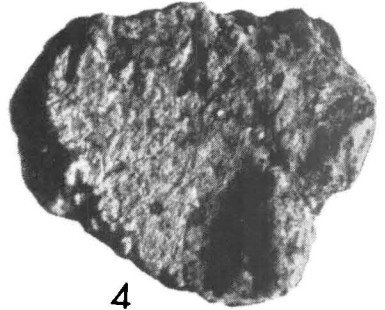
1



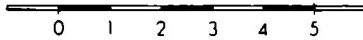
2



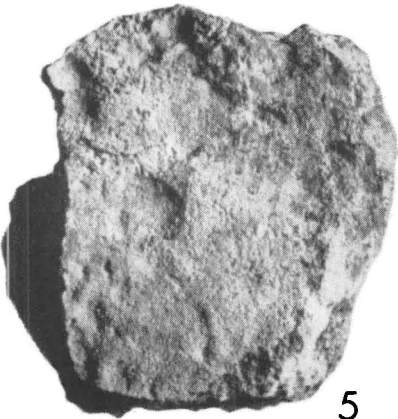
3



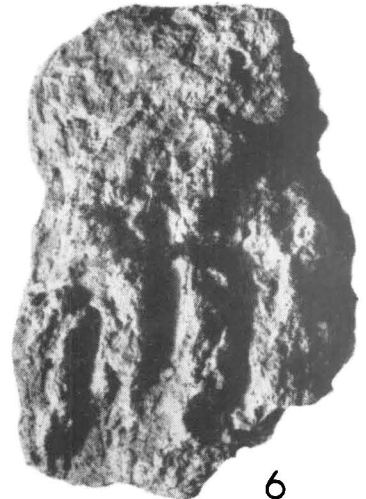
4



0 1 2 3 4 5

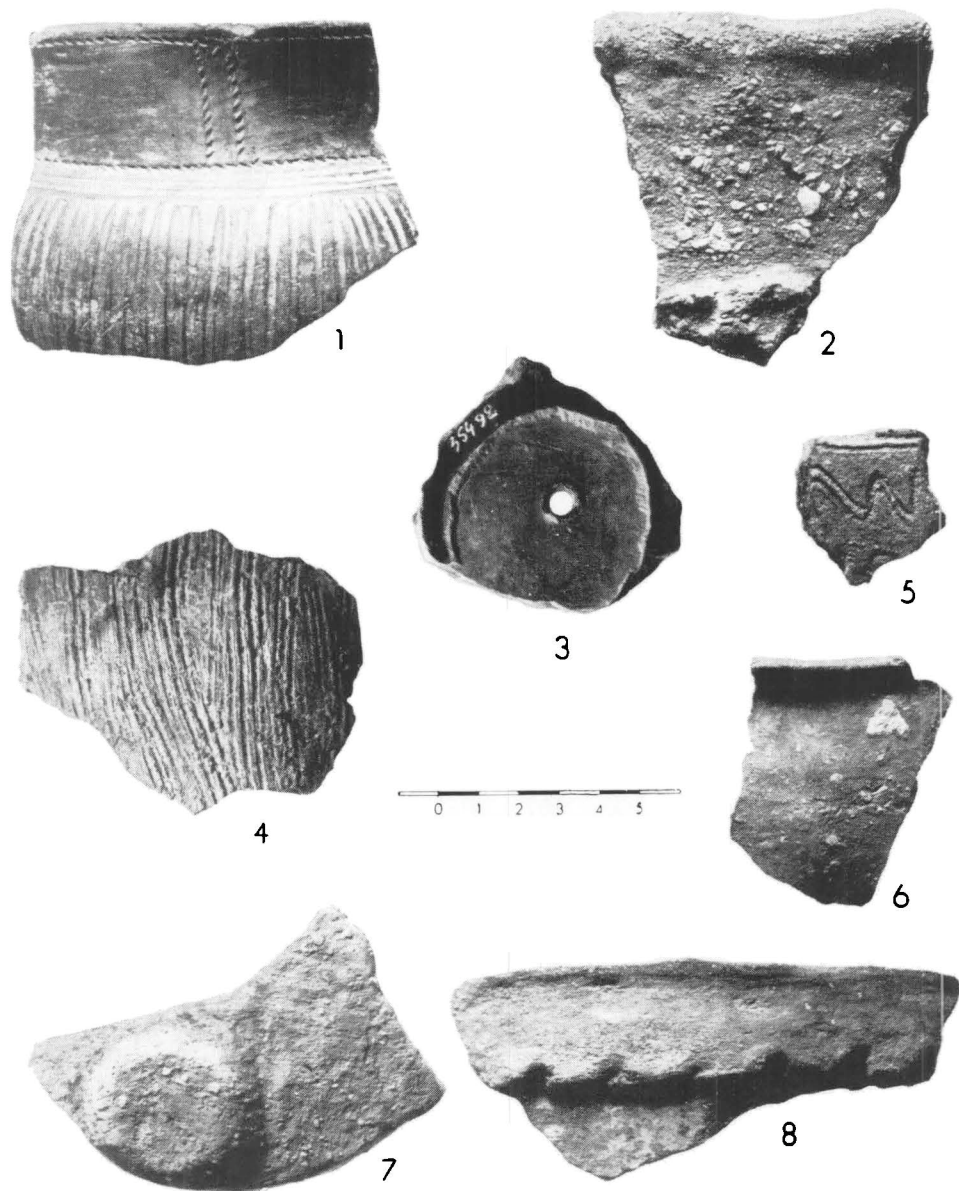


5

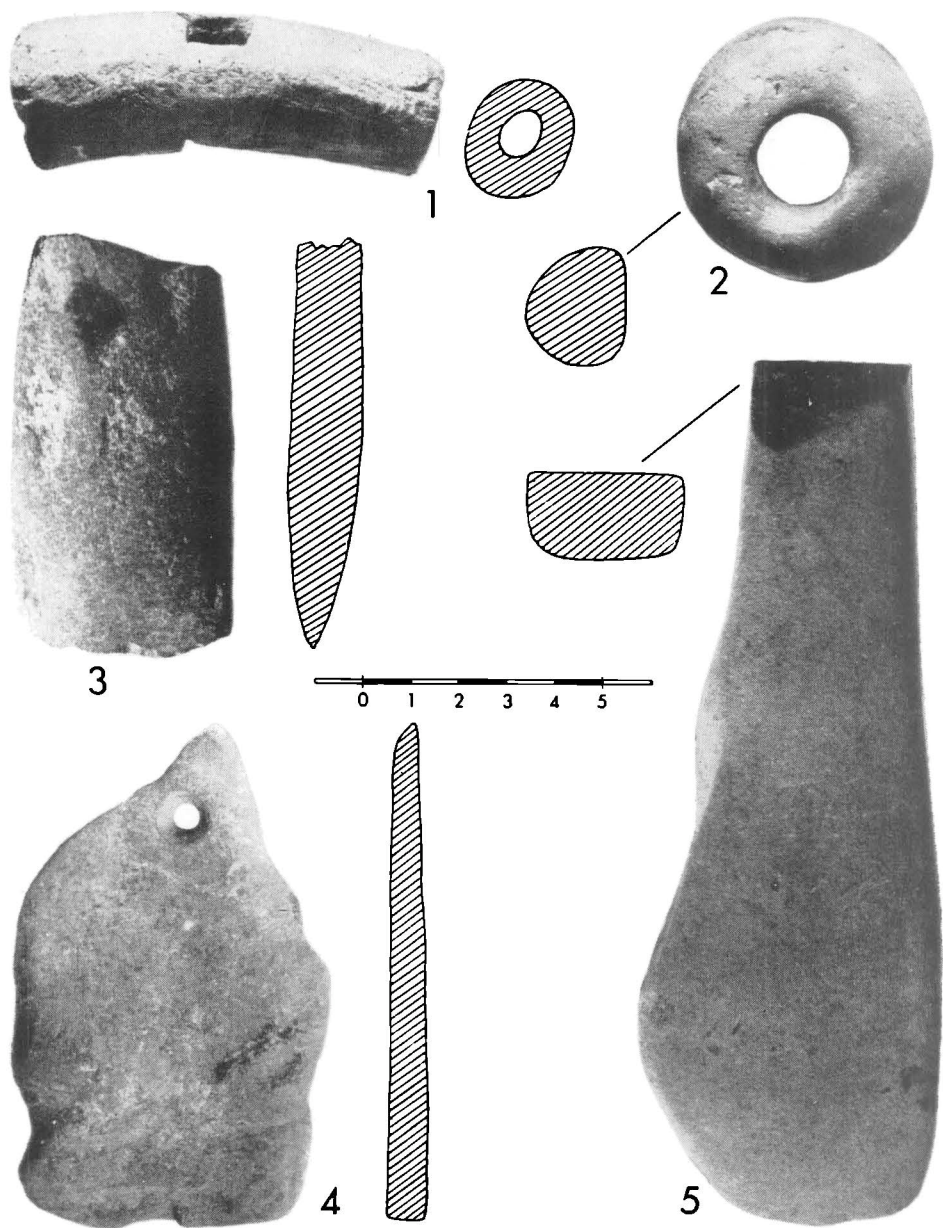


6

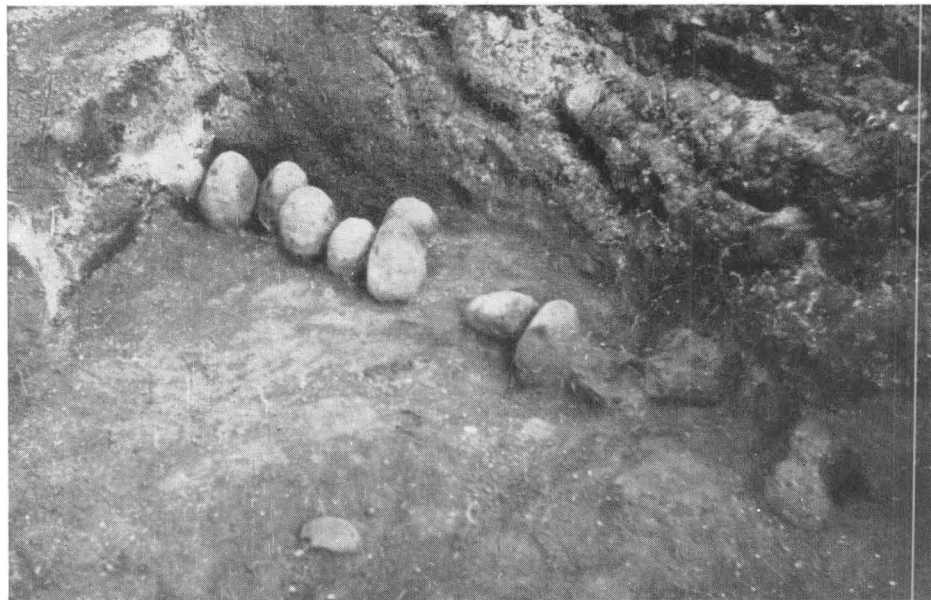
Tab. XX. — Plaveč-Šance. Ukázky kusů mazanice ze sond I-B a I-J. (Foto S. Ševčík.)



Tab. XXI. — Plaveč-Šance. Nálezy z jámy v jižním cípu akropole (1), ze sondy I-B (2–6) a z řezu Z vnějšího valu (7, 8). (Foto S. Ševčík.)



Tab. XXII. — Plaveč-Šance. Nálezy z jámy v jižním cípu akropole (1) a ze sondy I-J (2); náhodný nález na akropoli (3); nálezy v řezu A vnitřního valu (4, 5). (Foto S. Ševčík.)



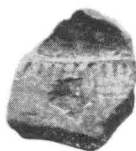
Tab. XXIII. — Chrlice II. Výzkum 1967, odkryté dno hrnčářské pece (*nahoře*) a závaží in situ (*dole*). — Chrlice II. Grabung 1967, der Boden eines Töpferofens (*oben*) und die Webgewichte in situ (*unten*). — (Foto A. Šik, L. Davídek.)



1



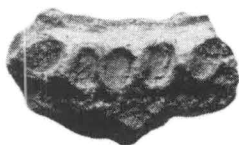
2



3



4



5



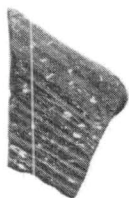
6



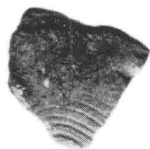
7



8



9



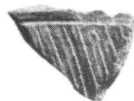
10



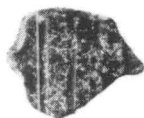
11



12



13



14



15



16



17



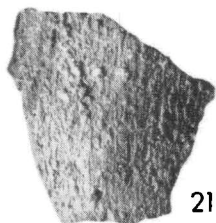
18



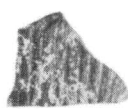
19



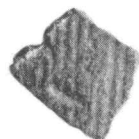
20



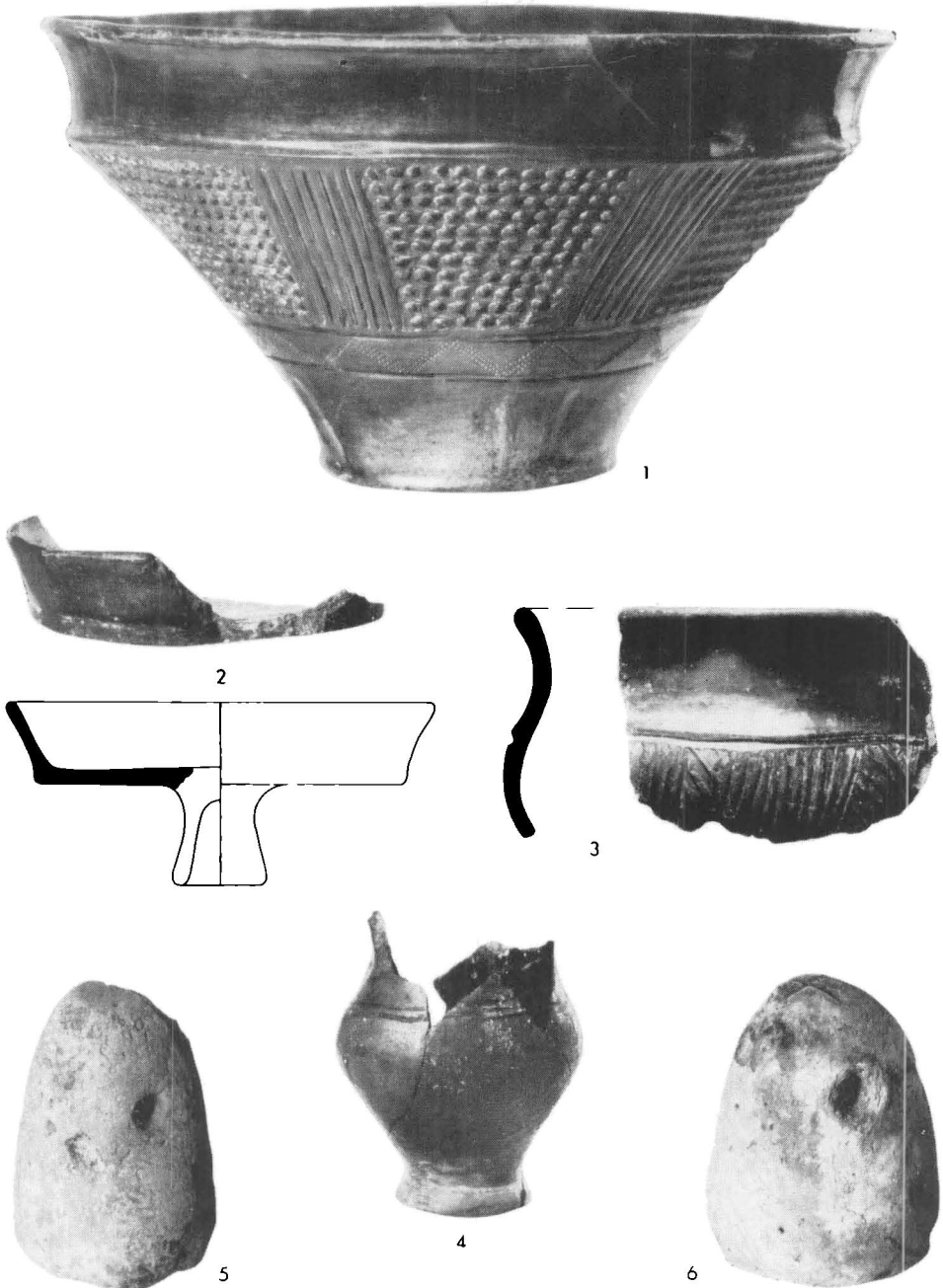
21



22



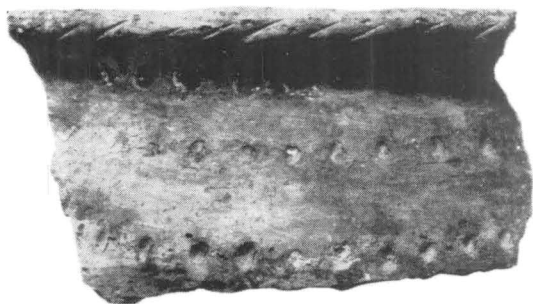
23



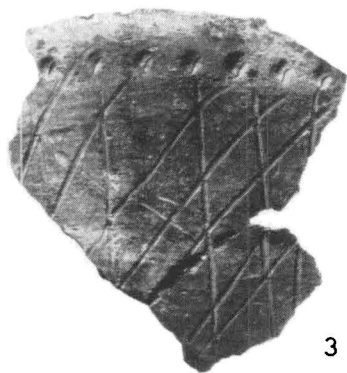
Tab. XXV. — Chrlice II, výzkum 1967. Vybrané doklady keramiky z doby římské a dvě závaží.
 — Chrlice II, Grabung 1967. Vier Belege der kaiserzeitlichen Keramik und zwei Webgewichte.
 (Foto S. Ševčík, 1 : 3.)



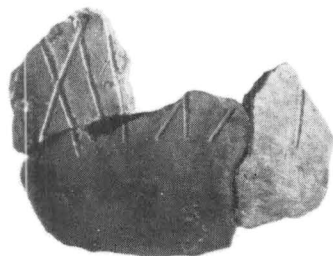
1



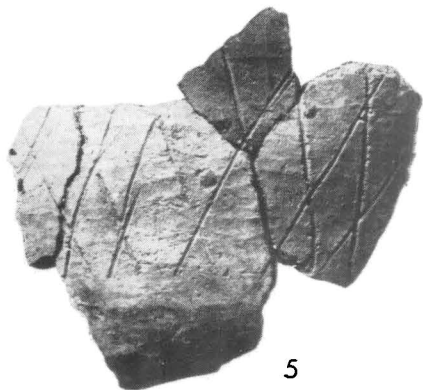
2



3

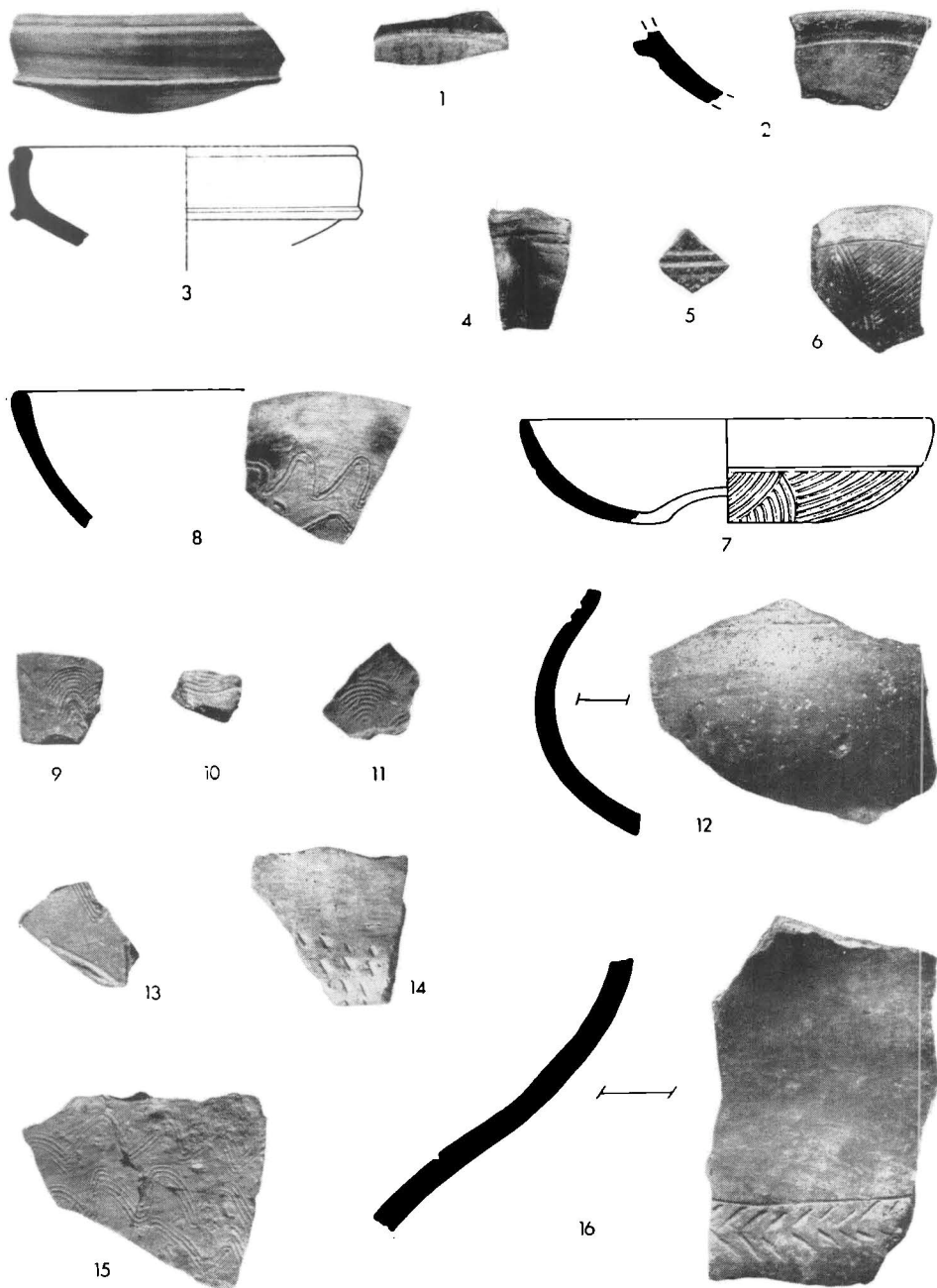


4



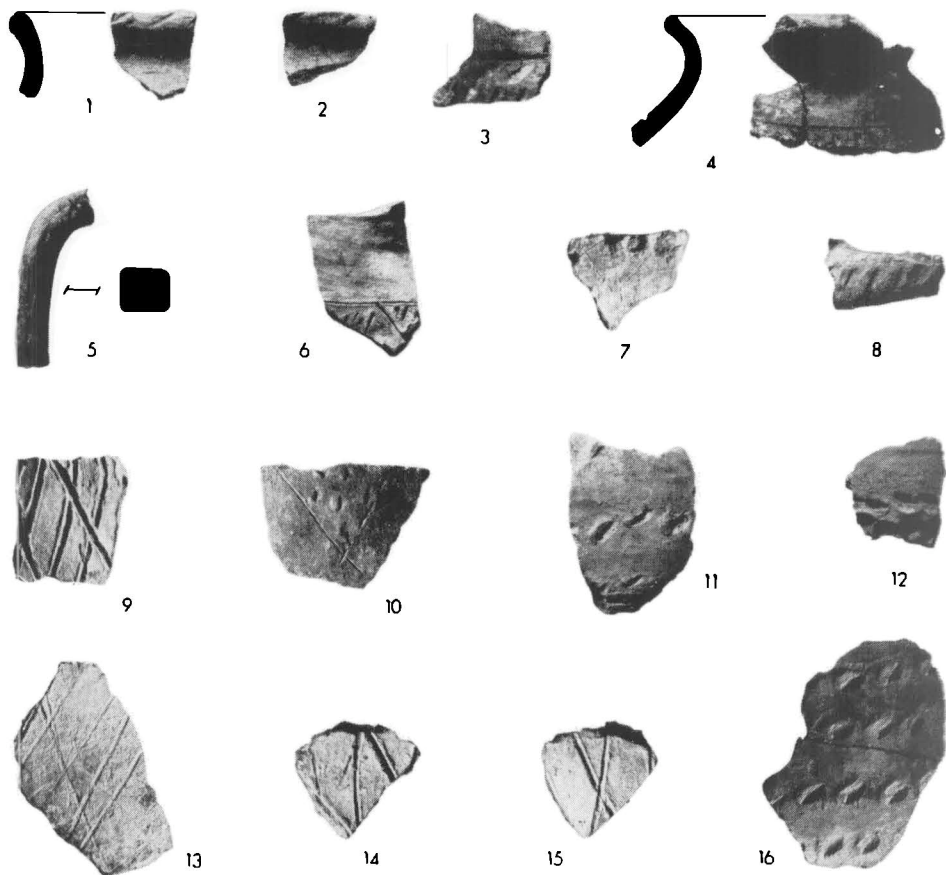
5

Tab. XXVI. — Chrlice II, výzkum 1967. Zlomky veľké nádoby zásobnicového typu. — Chrlice II, Grabung 1967. Bruchstücke des grösseren Vorratsgefässes. — (Foto S. Ševčík, 1 : 3.)

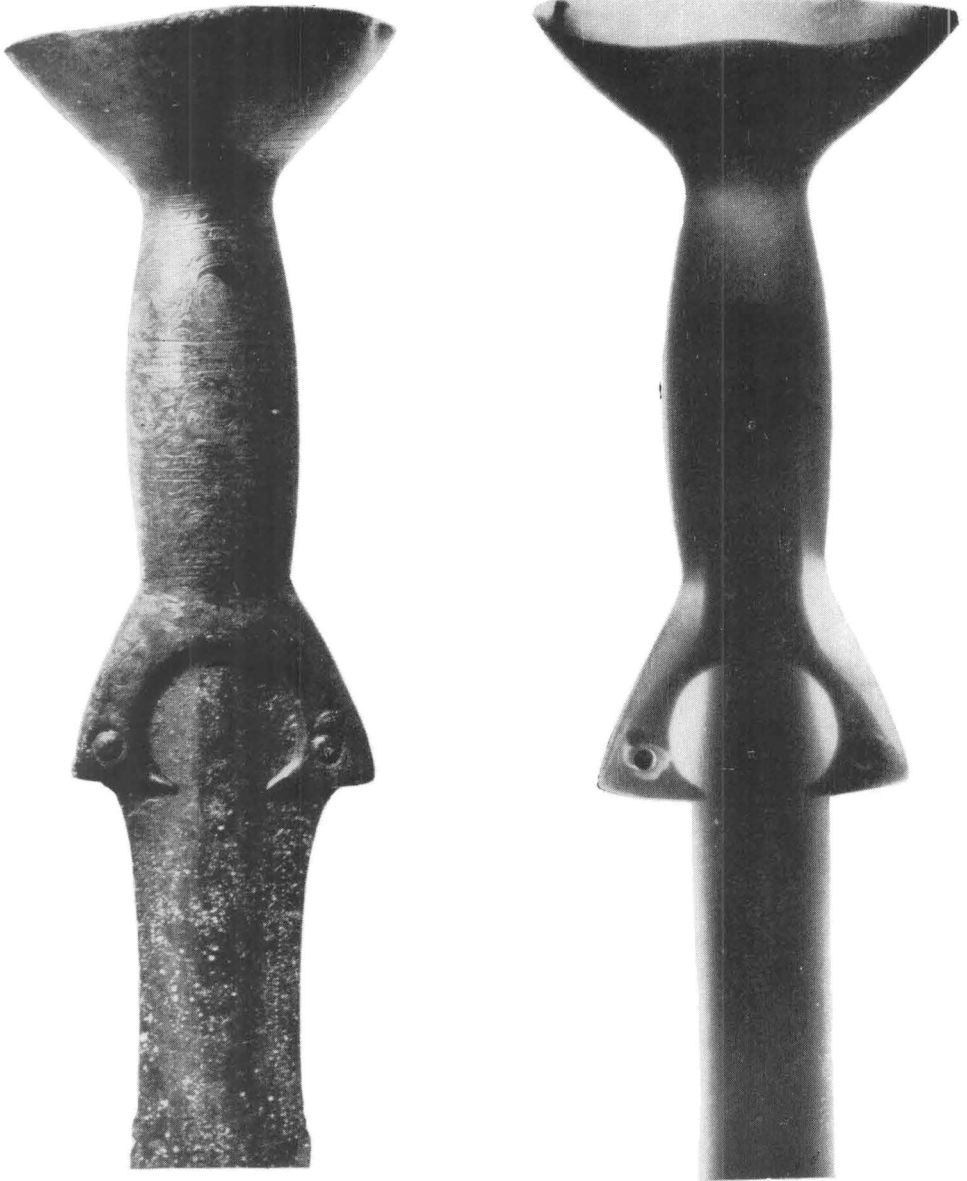


Tab. XXVII. — Chrlice II, výzkum 1967. Keramické střepy. — Chrlice II, Grabung 1967. Keramische Scherven. — (Foto S. Ševčík, 1 : 3.)

TAB. XXVIII



Tab. XXVIII. — Chrlice II, výzkum 1967. Keramické střeby. — Chrlice II, Grabung 1967.
Keramische Scherben. — (Foto S. Ševčík, 1 : 3.)



Tab. XXIX. — Strachotice, okr. Znojmo. Fotografický (1) a rentgenový (2) snímek meče s číškovitou rukojetí. (Foto S. Ševčík.)

