

Obrazová příloha

Sborník prací Filozofické fakulty brněnské univerzity. F, Řada uměnovědná. 1964, vol. 13, iss. F8, pp. -

Stable URL (handle): <https://hdl.handle.net/11222.digilib/111008>

Access Date: 16. 02. 2024

Version: 20220831

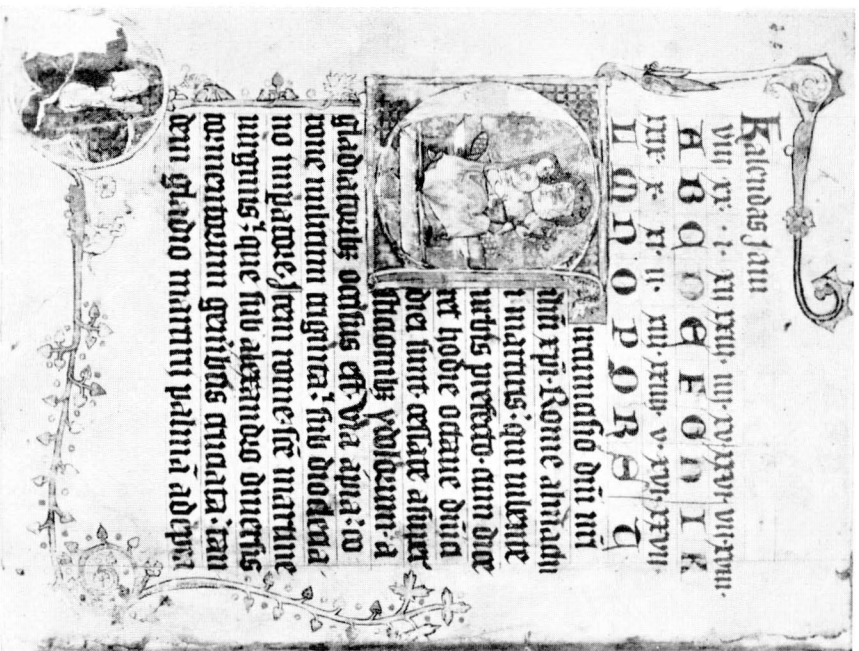
Terms of use: Digital Library of the Faculty of Arts, Masaryk University provides access to digitized documents strictly for personal use, unless otherwise specified.



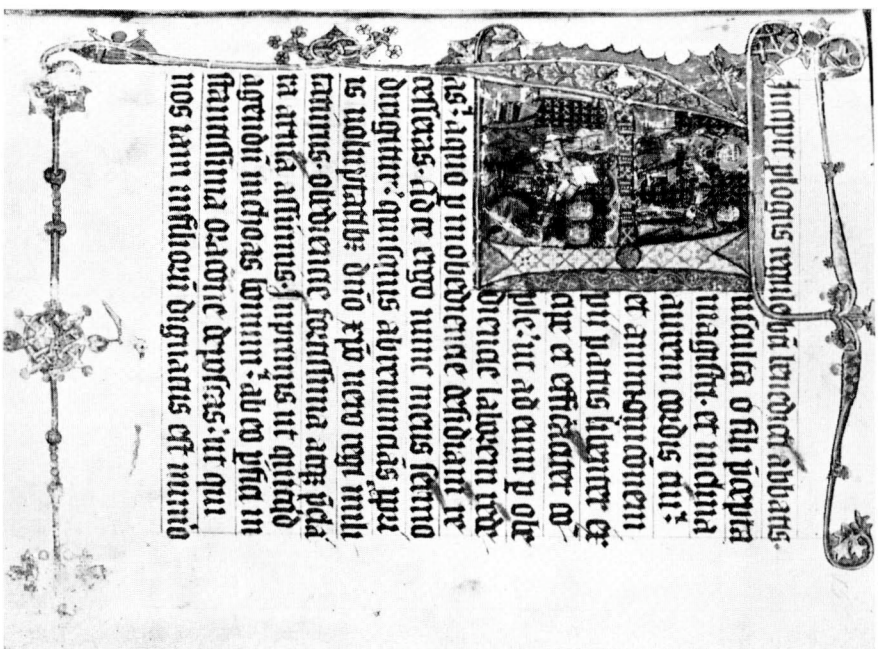
1. Sarkofág s bitvou Amazonek (přední strana)



2. Sarkofág s bitvou Amazonek (boční strana)



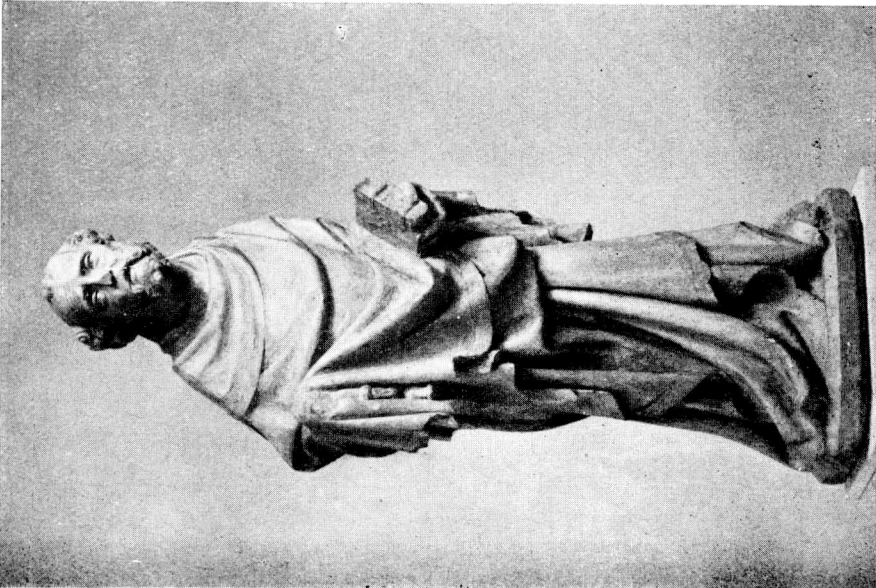
3. Martýrológium a Řezala S. Benediceti. Cod. 417, fol. 1v



4. Martýrológium a Řezala S. Benediceti. Cod. 417, fol. 150



6. Meister der Kreuzigung in der Teynkirche in Prag, Johannes
Evangelist aus der Kreuzigungsgruppe, Detail



5. Meister der Krummauer Madonna, III. Peter von Slivice



7. Meister der Krummauer Madonna, III. Peter von Slivice, Detail

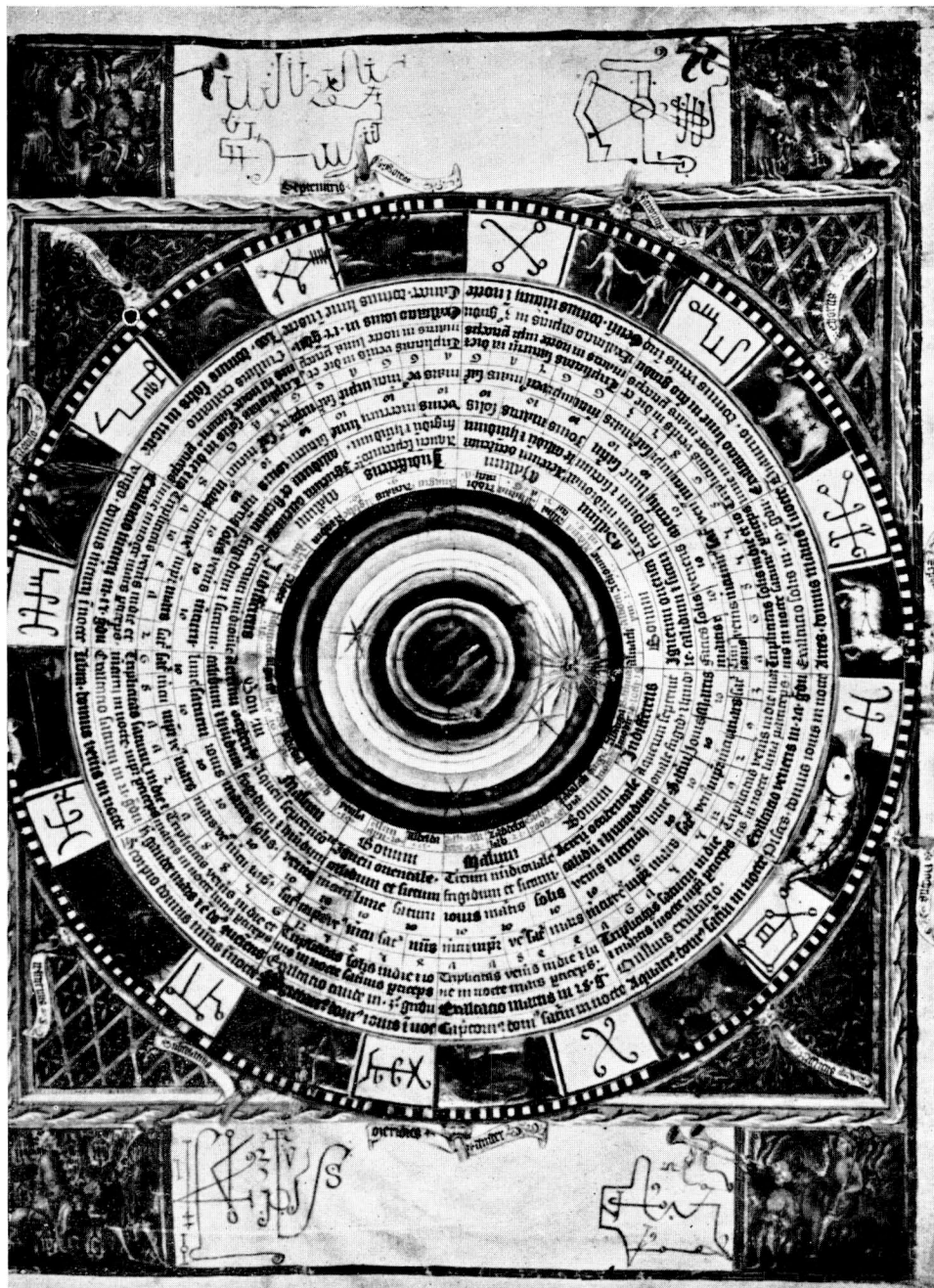


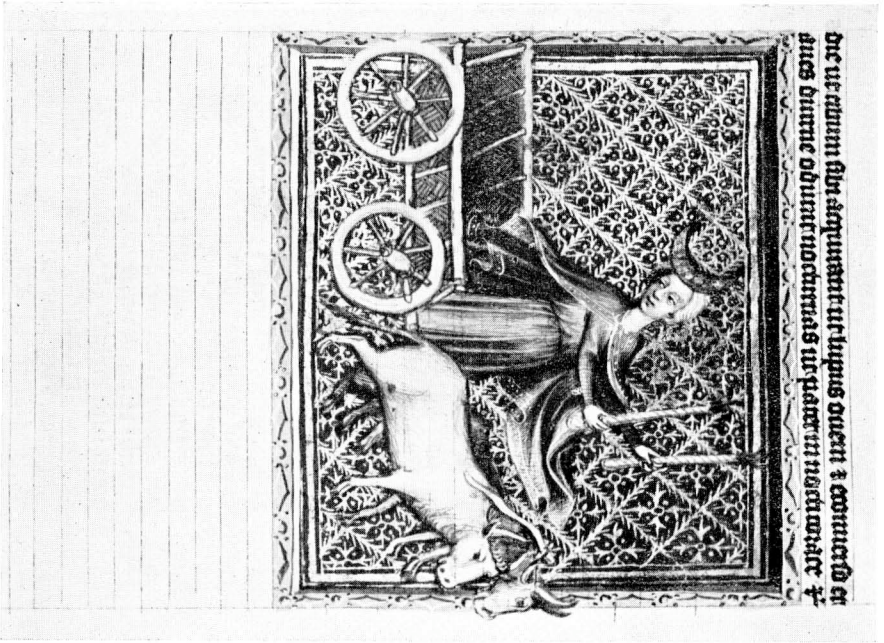


9. Pegassus et Equuleus. München, Bayerische Staatsbibliothek, clm. 826, fol. 41v



10. Cassiopeia. München, Bayerische Staatsbibliothek, clm. 826, fol. 38v

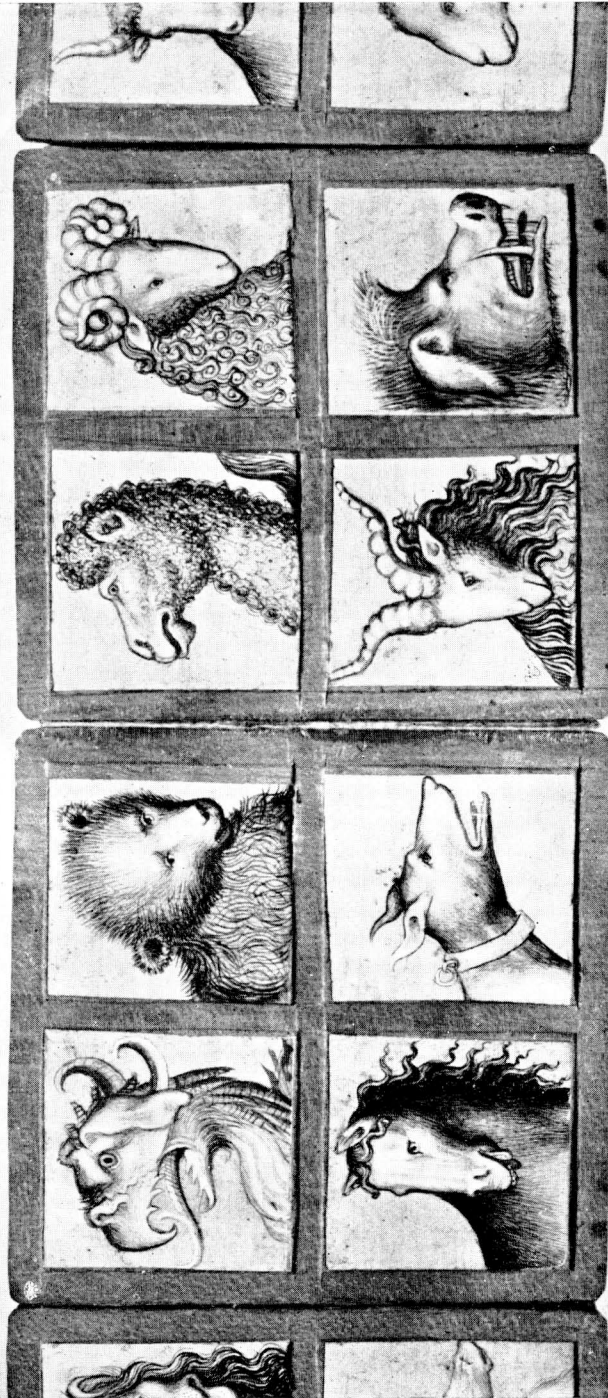




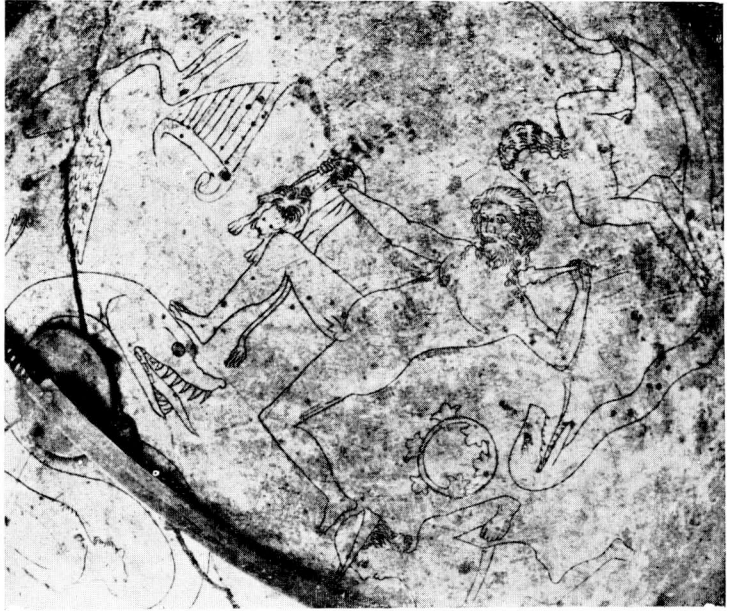
12. Lanna. Wien, Nationalbibliothek. Cod. 2352, fol. 31v



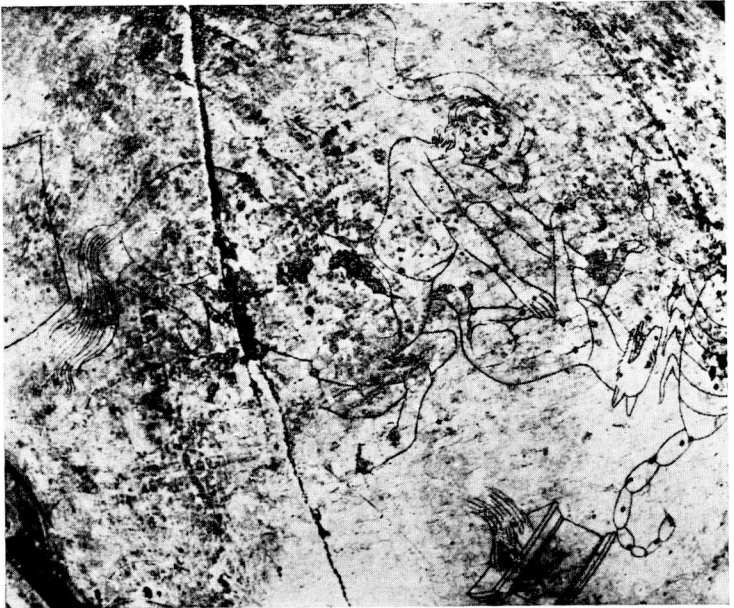
13. Cassiopia. Prag: PXS, Cod. DA II 13, fol. 13



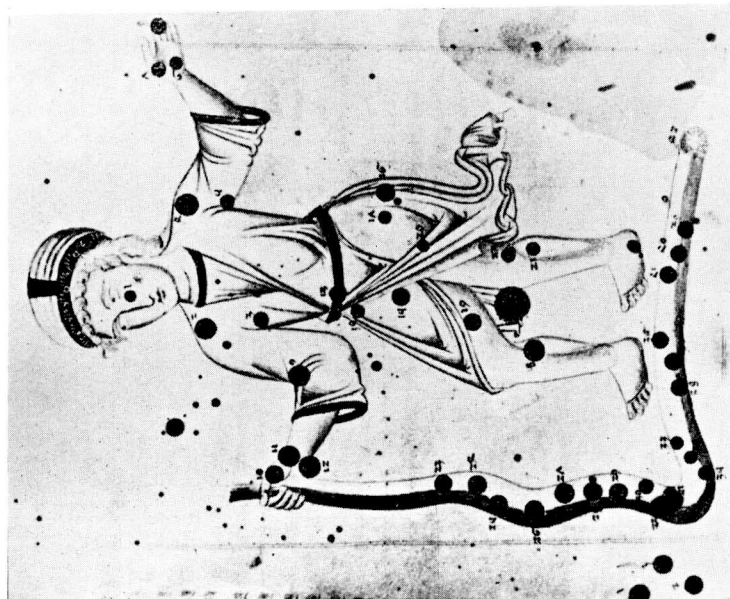
14. Ambrasser Skizzenbuch



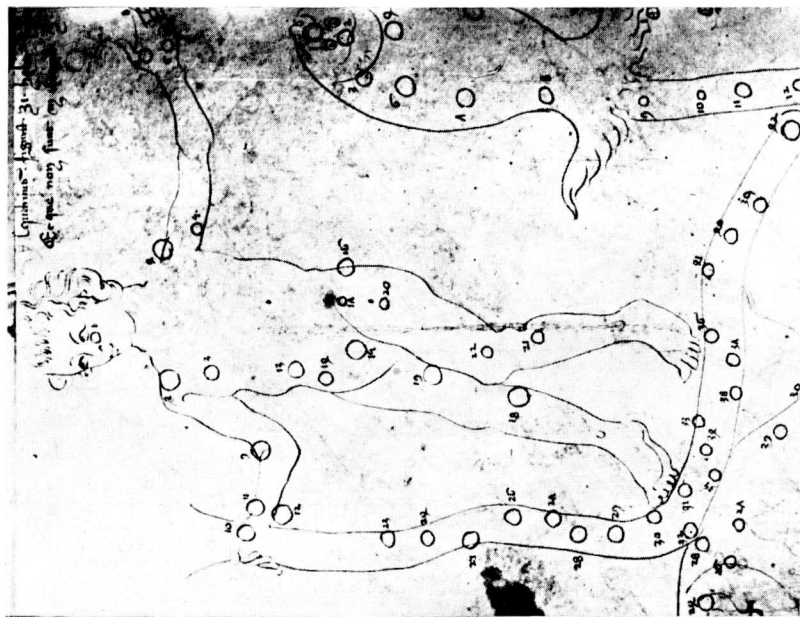
15. Cues, Himmelsglobus Premyšl Otakars II. Heracles



16. Cues, Himmelsglobus Premyšl Otakars II., Centaur und Lupus

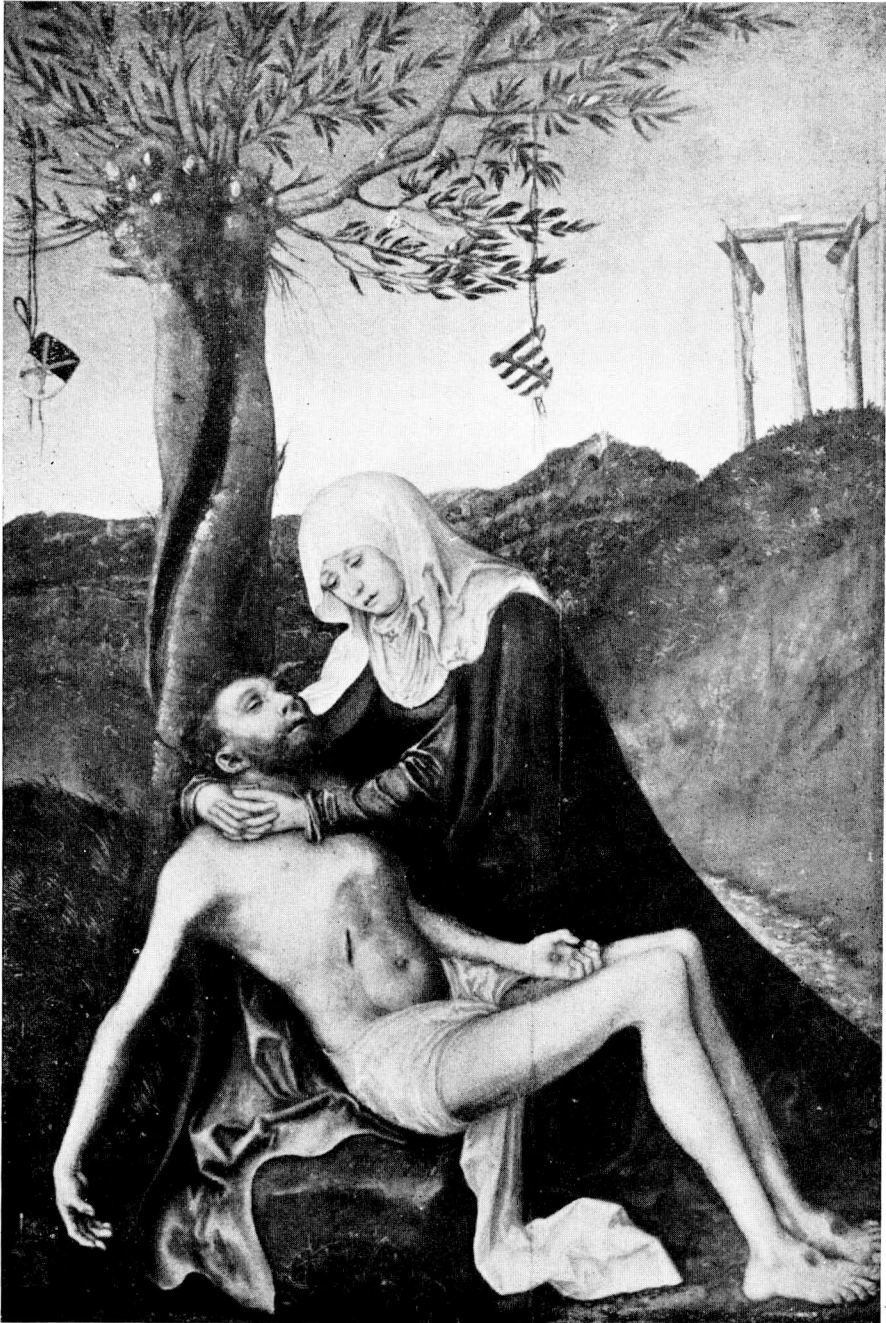


18. Aquarius, Paris, Bibliothek Arsenal, Cod. 1036

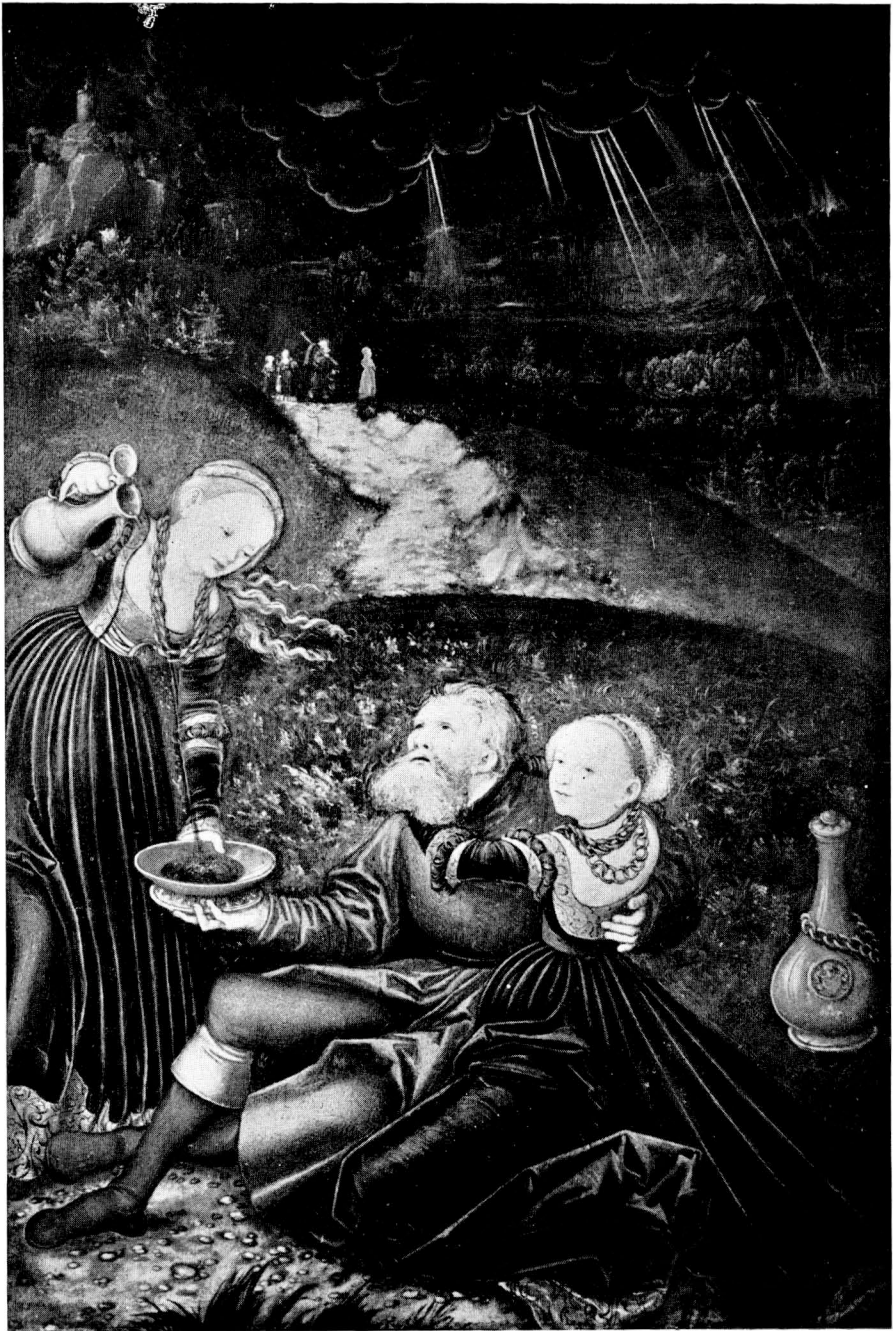


17. Cues, Cod. 207 Hospitalbibliothek in Kues, Aquarius





20. Luc. Cranach d. Ä., Pieta



21. Luc. Cranach d. X., Lot und seine Töchter

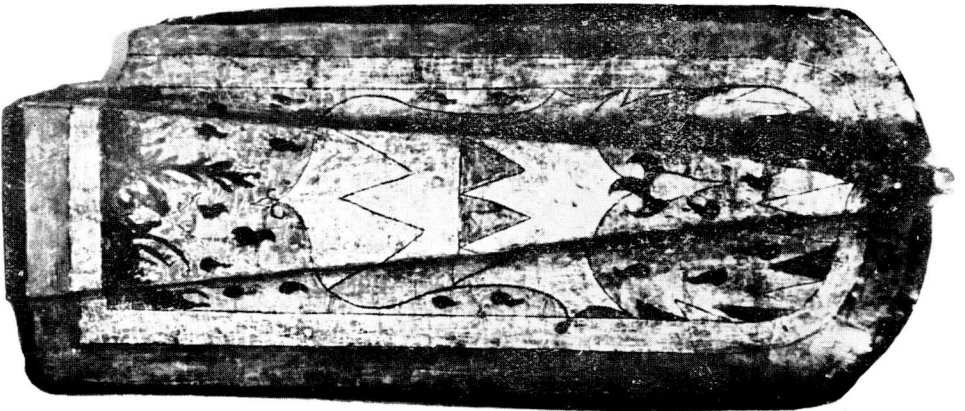


Zum Aufsatz von J. Kropáček

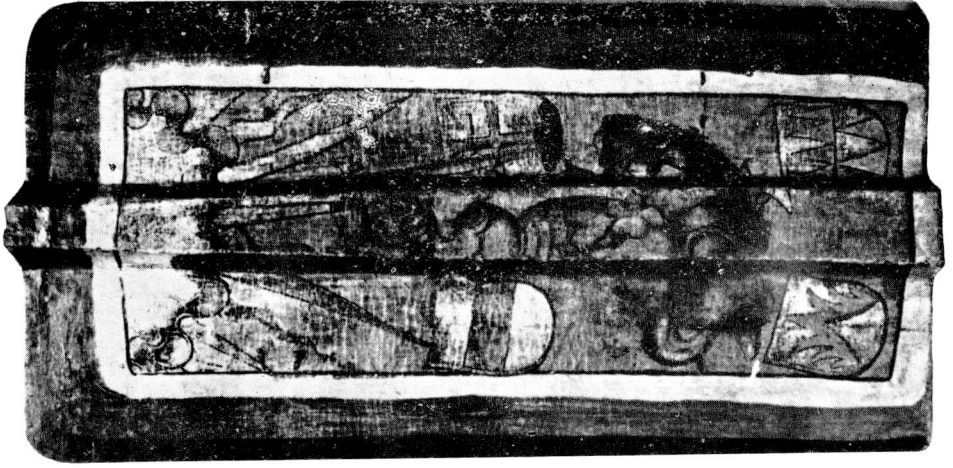


23. Madonna in der Herrenkapelle,
Passau, Dom

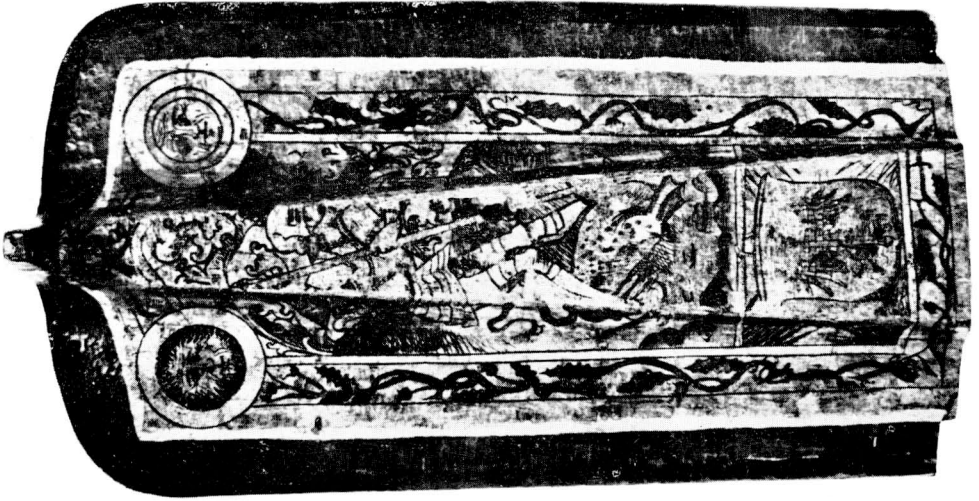
Zum Aufsatz von Vl. Denkstein



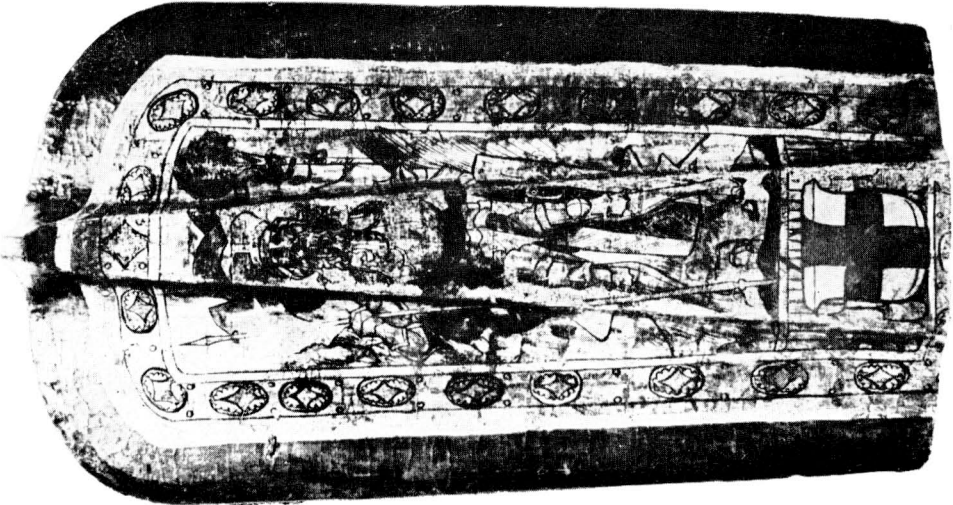
24. Pavese mit dem Wappen des Bistums
von Olomouc (Olmutz)



27. Pavese mit dem hl. Georg



26. Pavese mit dem hl. Georg und dem mährischen Adler



25. Pavese mit dem hl. Wenzel

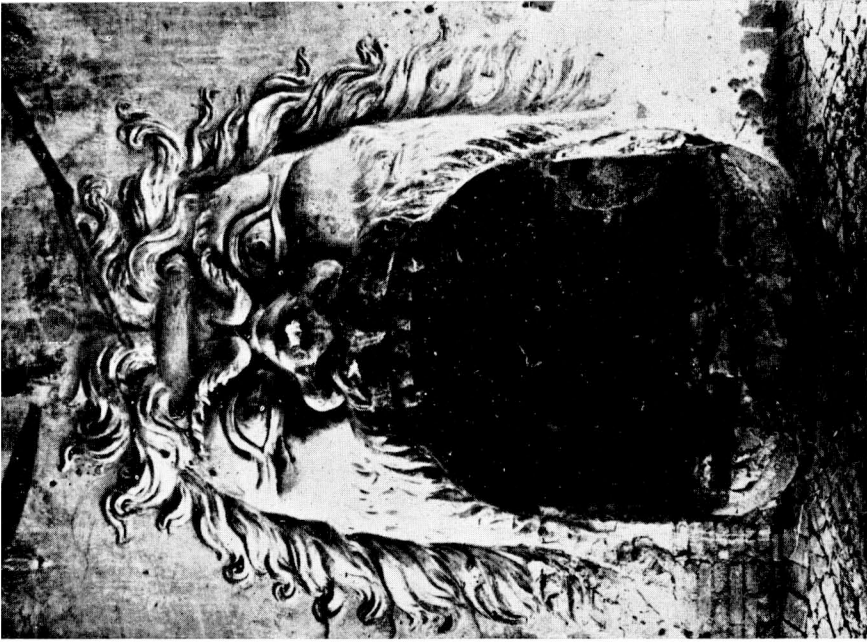


*Mi Formò in monte S mi ritrasse in Carte,
Natura à casaſol Arcimboldo ad arte.*

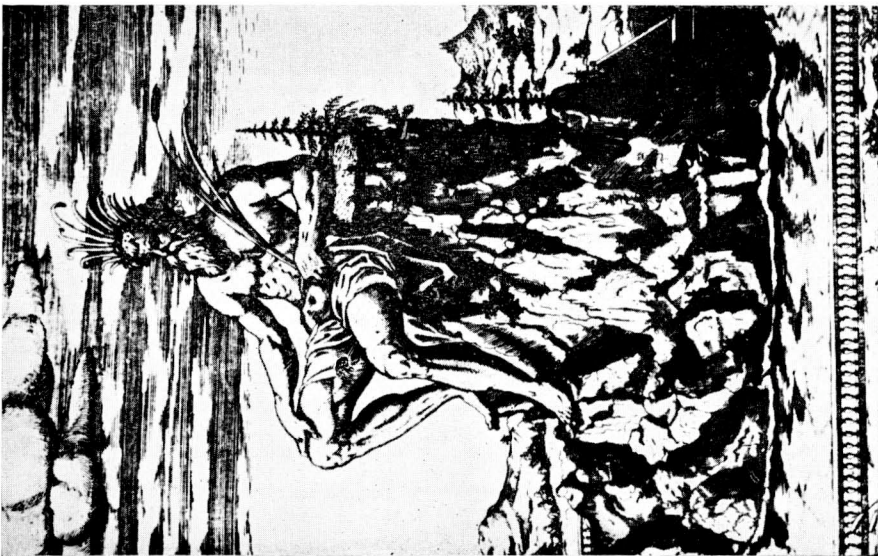
28. Anthropomorphe Landschaft (nach Giuseppe Arcimboldo)



29. Campus Anthropomorphus, 1646



31. Kamin in der Villa della Torre in Fumano



30. „Mont Imollus“, 1615



32. Roelant Savery, Reining Stallions (formerly called „Horses“), 1630—1635



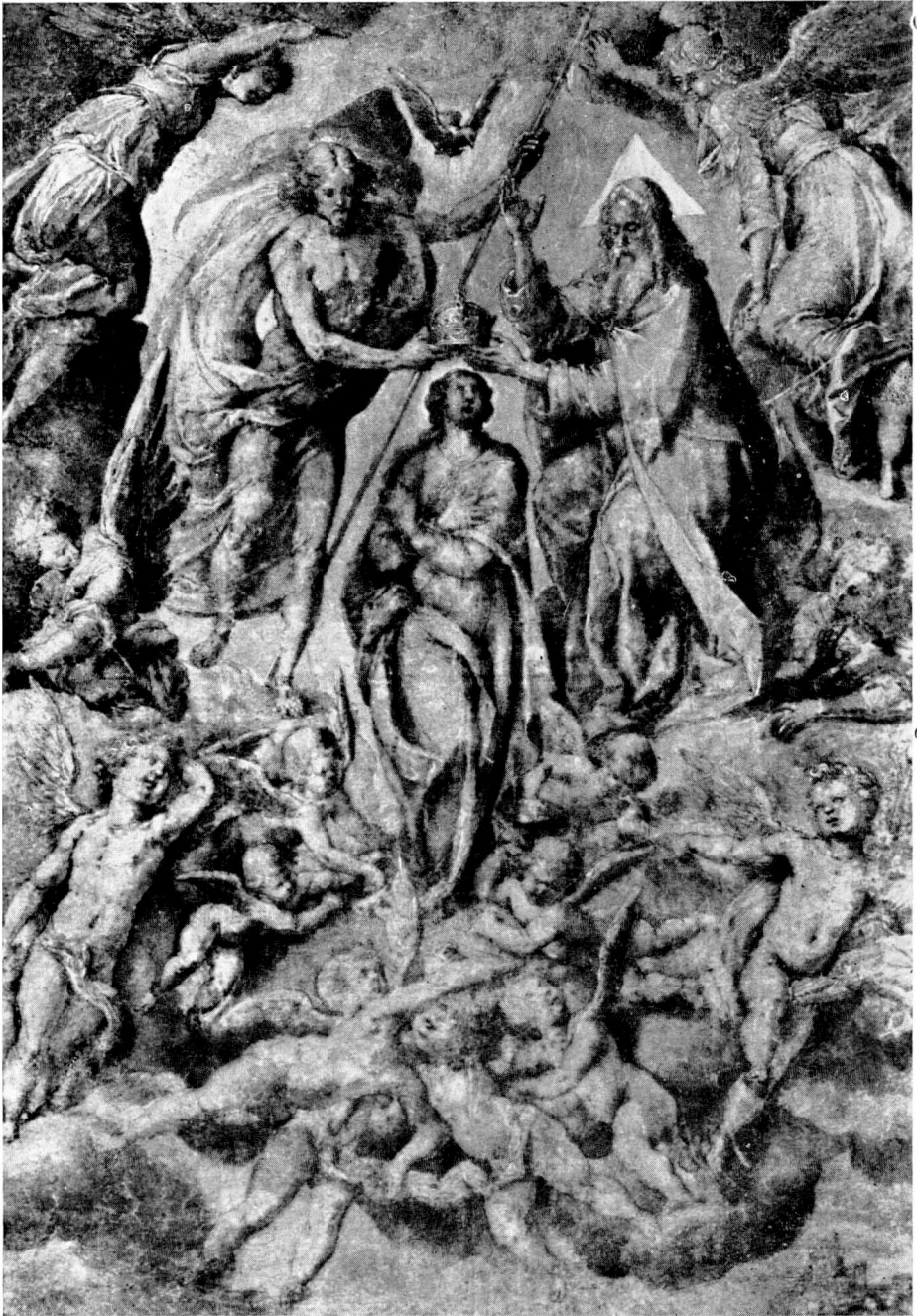
33. Roelant Savery, *Landscape with Birds*, 1622



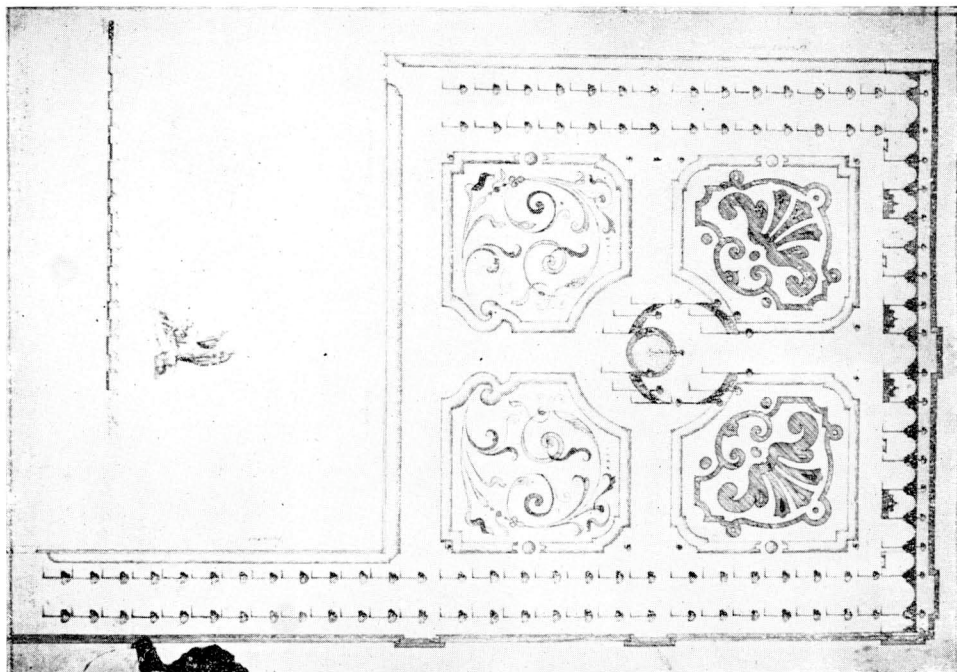
34. Herkules Seghers, Rearing Horse, about 1631



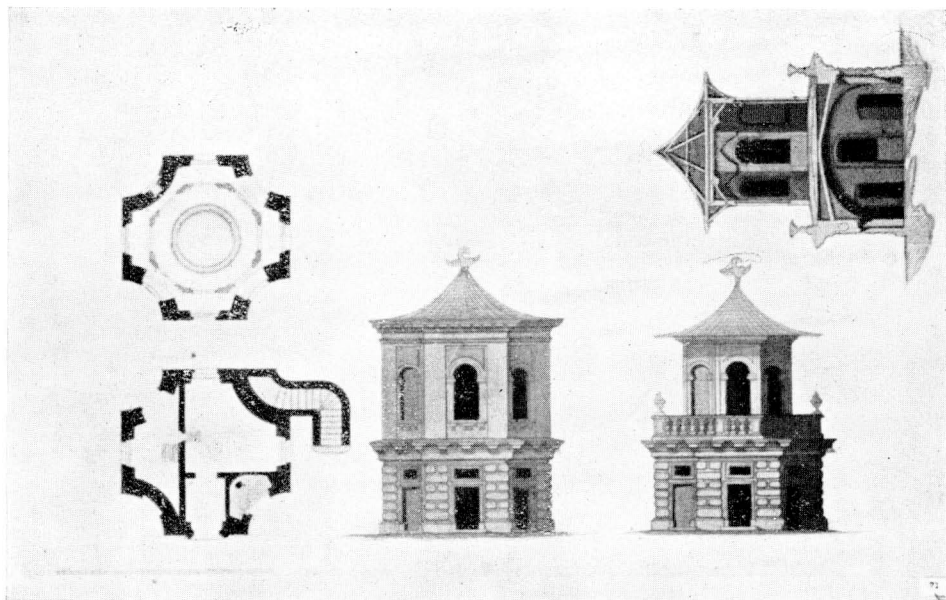
35. Roelant Savery, Paradise, 1618



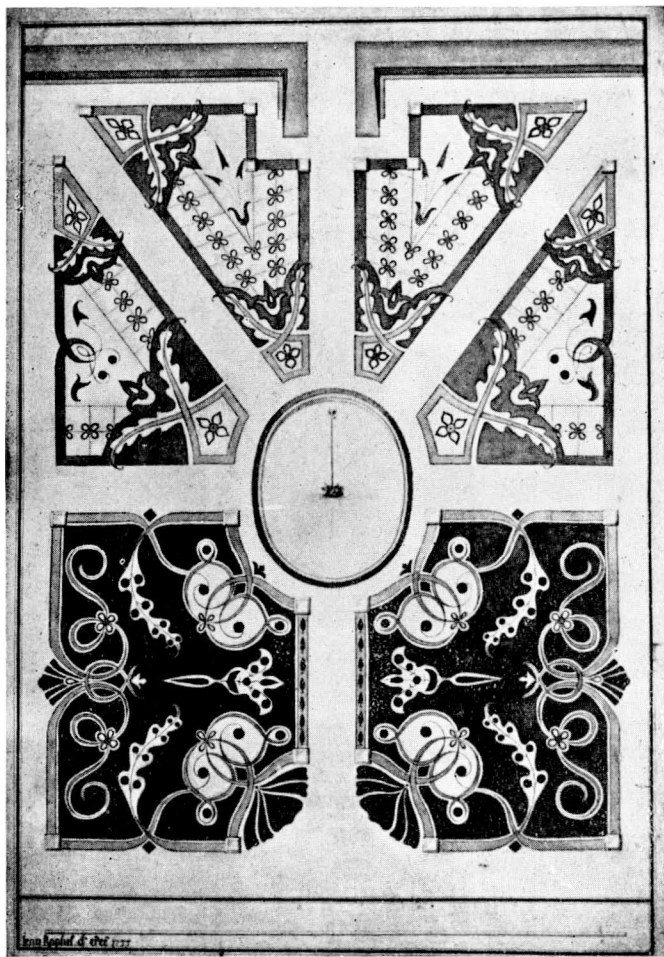
36. Giacomo Ligozzi, Coronation of the Virgin Mary



37. Anonym, Projekt okrasné zahrady pro klášter v Rajhradě



38. Fr. Brunn, Projekt zahradního altánu pro klášter v Rajhradě



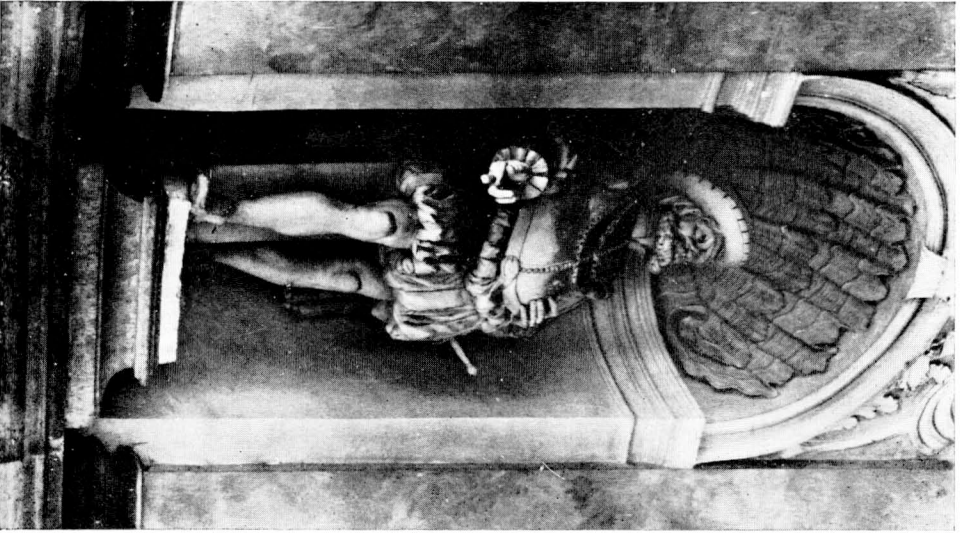
39. J. Raphael d'Épée, Projekt okrasné zahrady pro klášter v Rajhradě (1733)

Kláštecká B. Samka

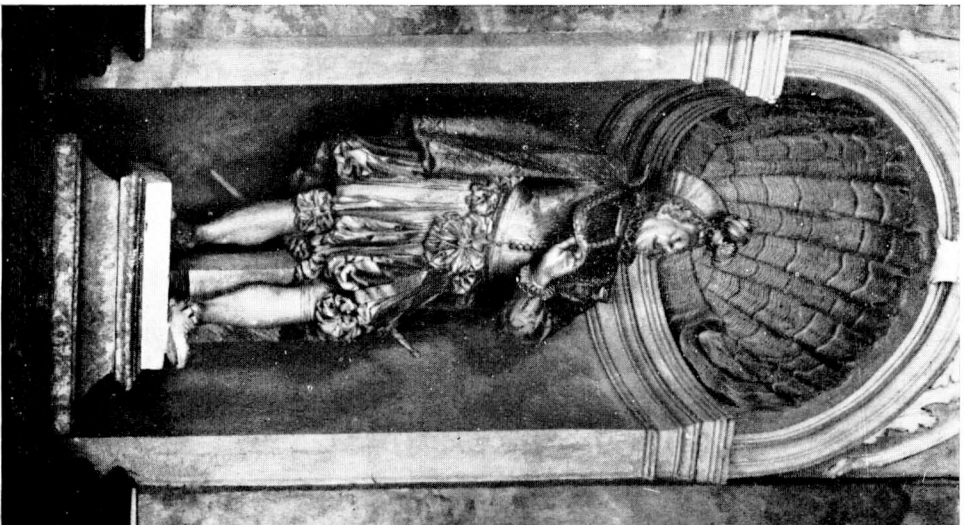


40. Paul Troger, Jodokus von Luxemburg, um 1750

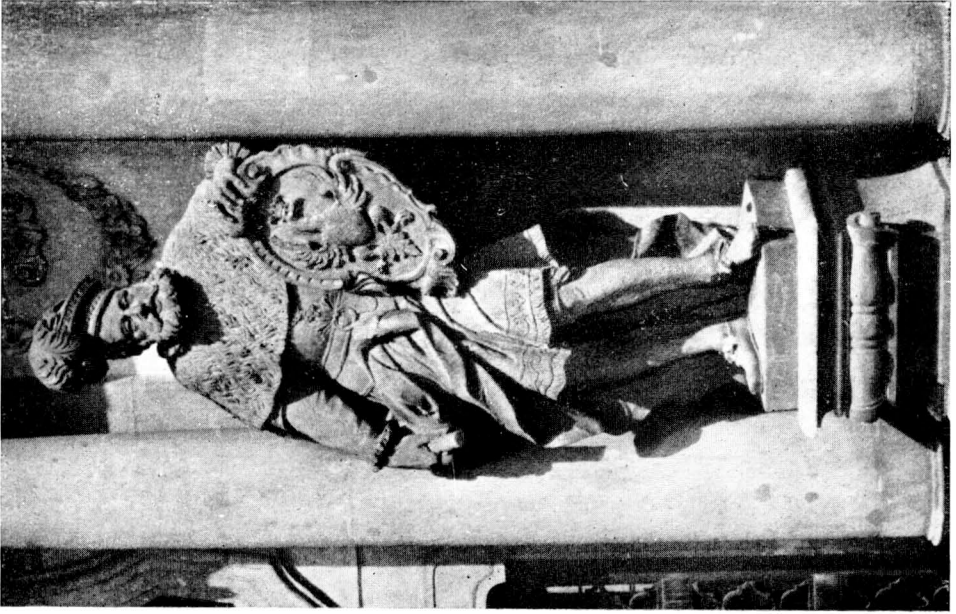
Zám. Aufsatz von O. J. Bräntsch



41. Adam Tobias Kracker, Wolfgang Althann,
1694—1695



42. Adam Tobias Kracker, Christoph Althann,
1694—1695



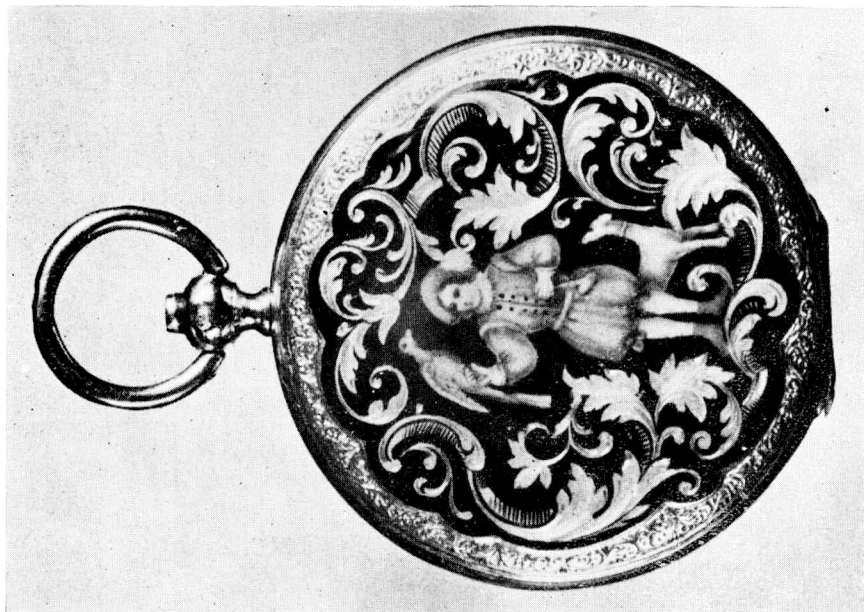
44. Paul Troger, Johann Heinrich von Luxemburg, um 1750



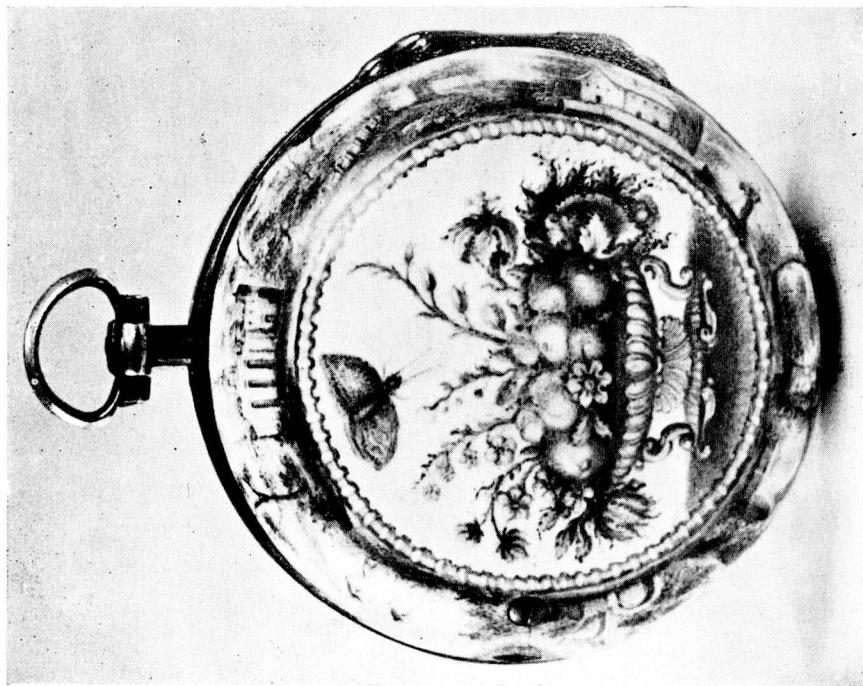
43. Ignaz F. Platzer, König Kyros von Persien, um 1755



45. J. B. Hagenauer, *Beweinung*



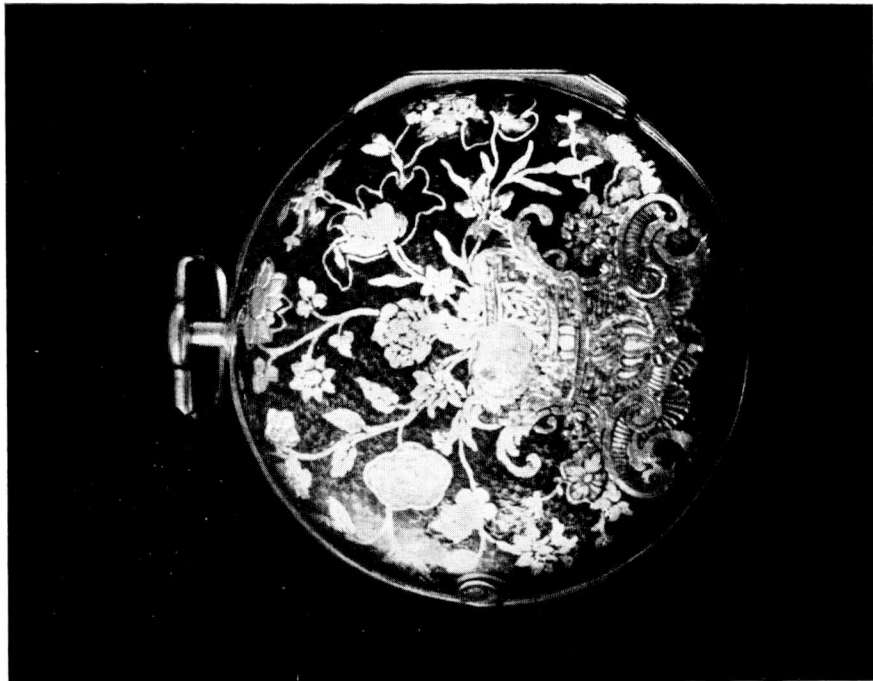
47. Une montre d'or. Suisse



46. Une montre de cuivre jaune dorée. Suisse, après la moitié du 18^e siècle



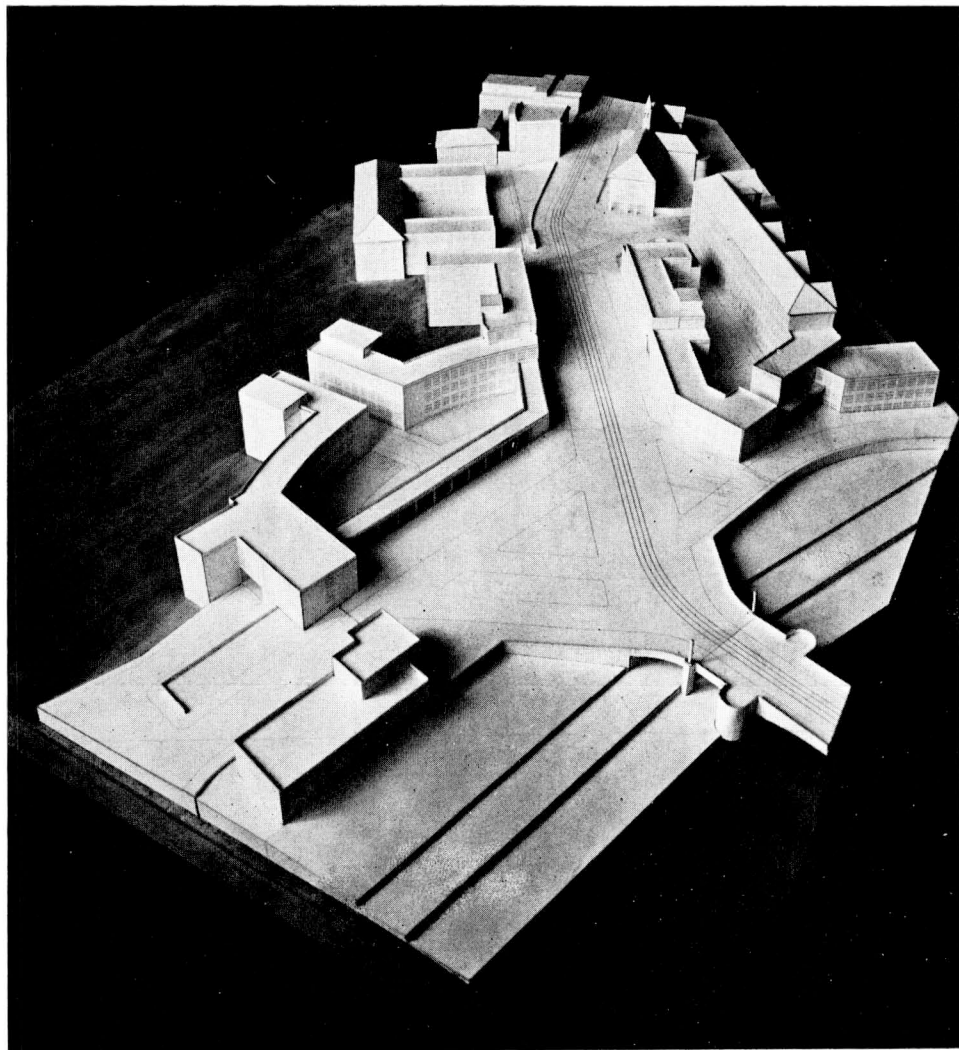
48. Une montre d'or. Suisse, 1790—1800

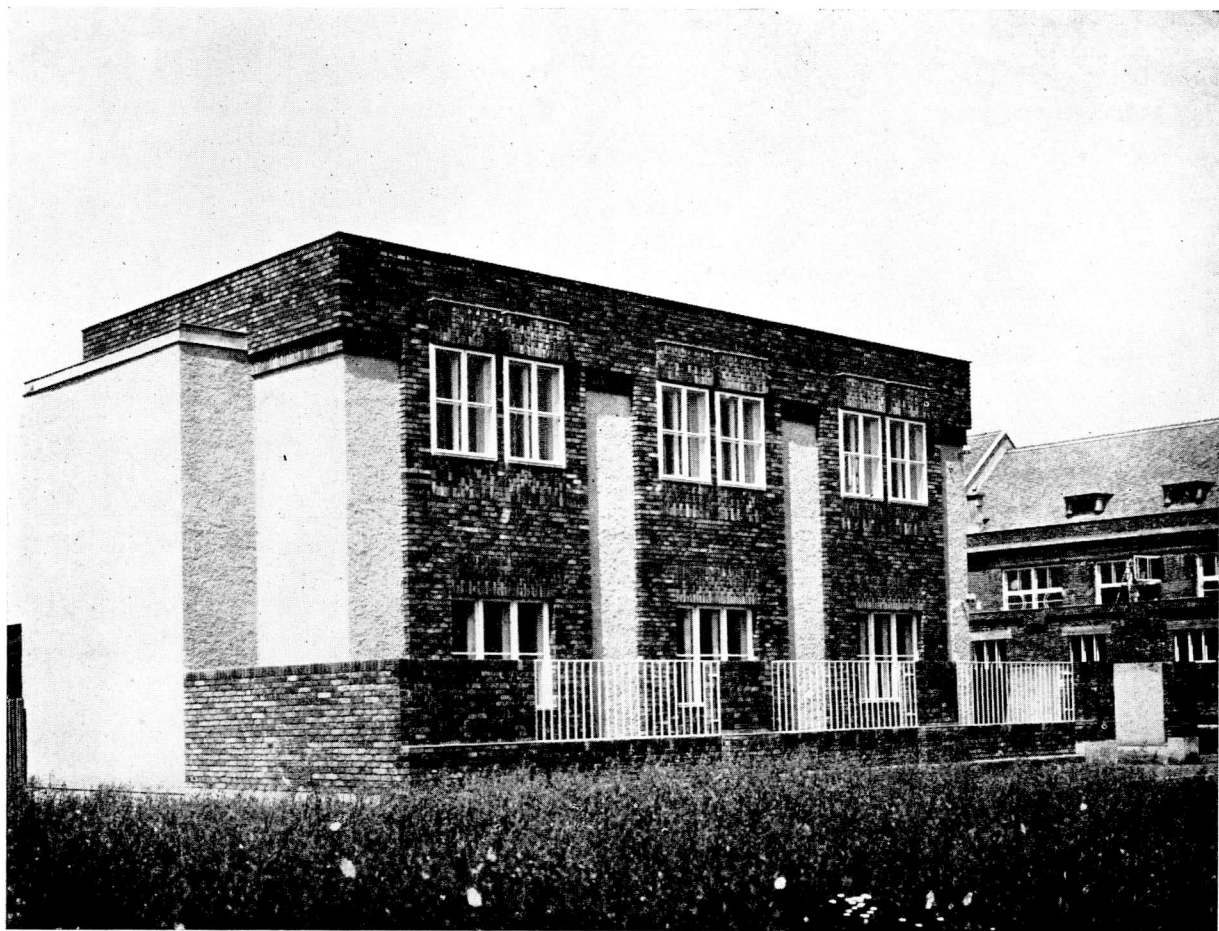


50. Une montre d'or. France, après la moitié du 18^e siècle.



49. Une montre d'or. L'Autriche et Suisse, avant 1806.

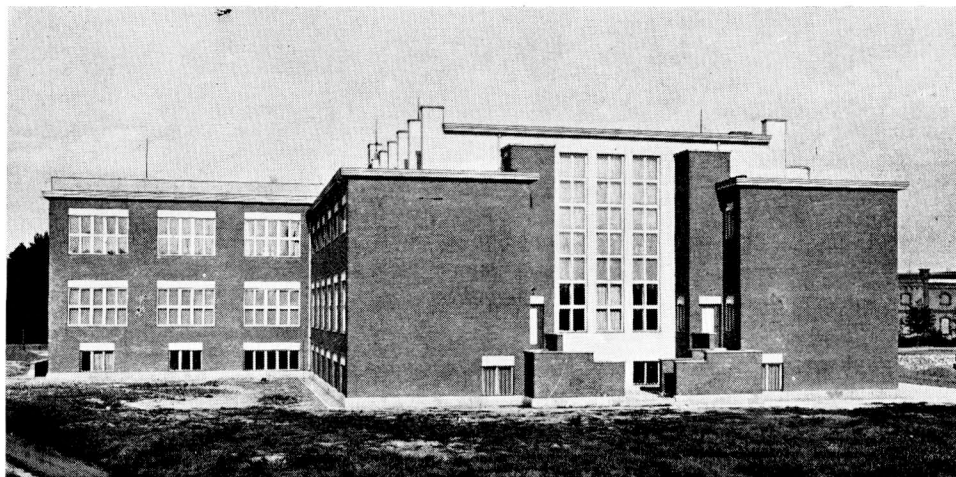




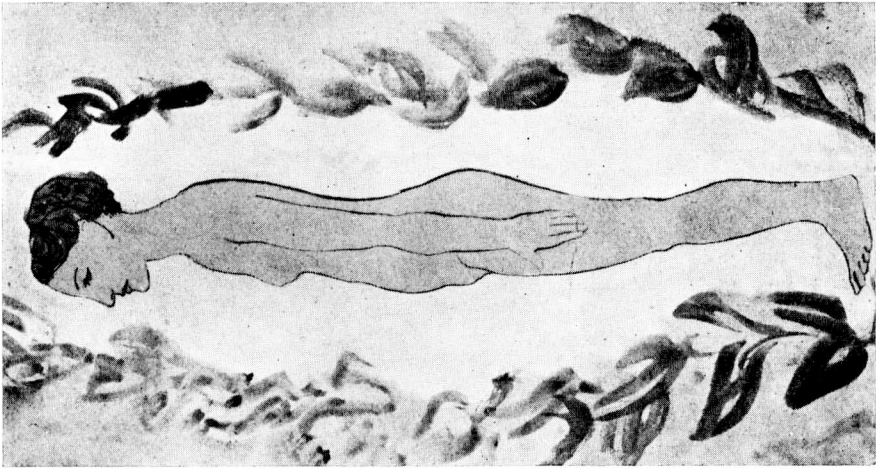
52. Bohuslav Fuchs, Administrativní budova v Bystřici pod Hostýnem, 1923



53. Bohuslav Fuchs, Zemanova kavárna v Brně, 1925



54. Bohuslav Fuchs, Masná bursa v Brně, 1924



56. Pablo Picasso, Nu debout de profil
(No du cat. 197)



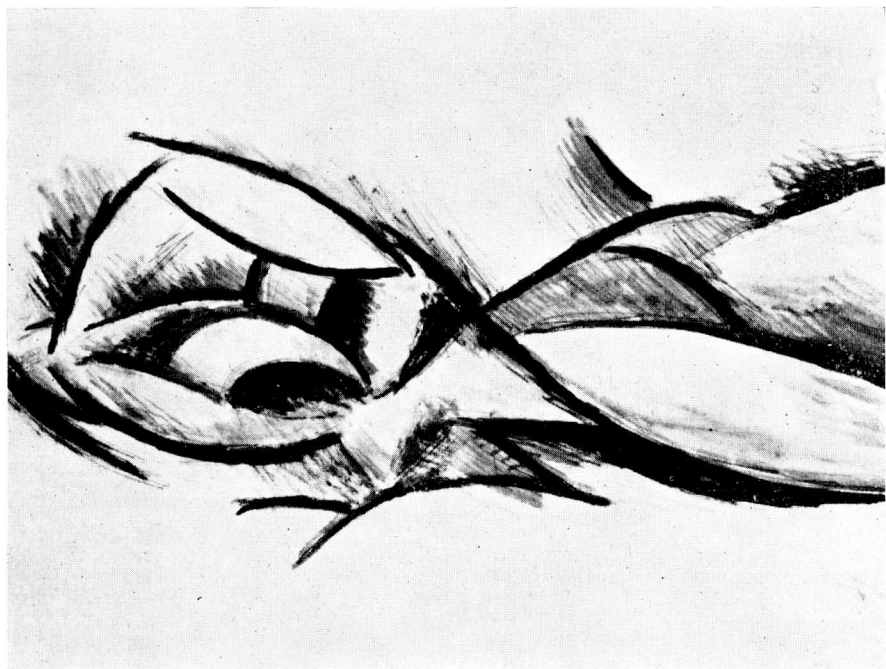
55. Pablo Picasso, La tête de la Fermière
d'Andorra (No du cat. 199)



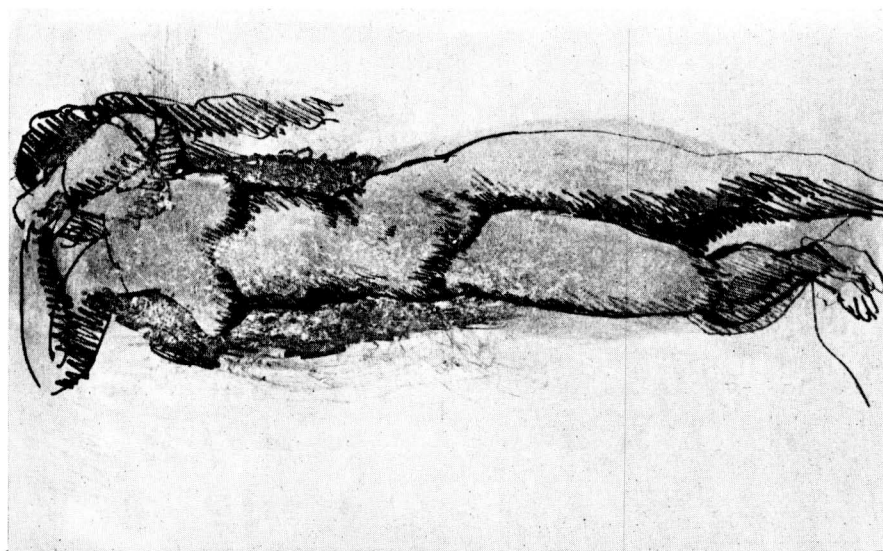
57. Pablo Picasso, Étude d'un portrait d'homme et de femme (No du cat. 195)



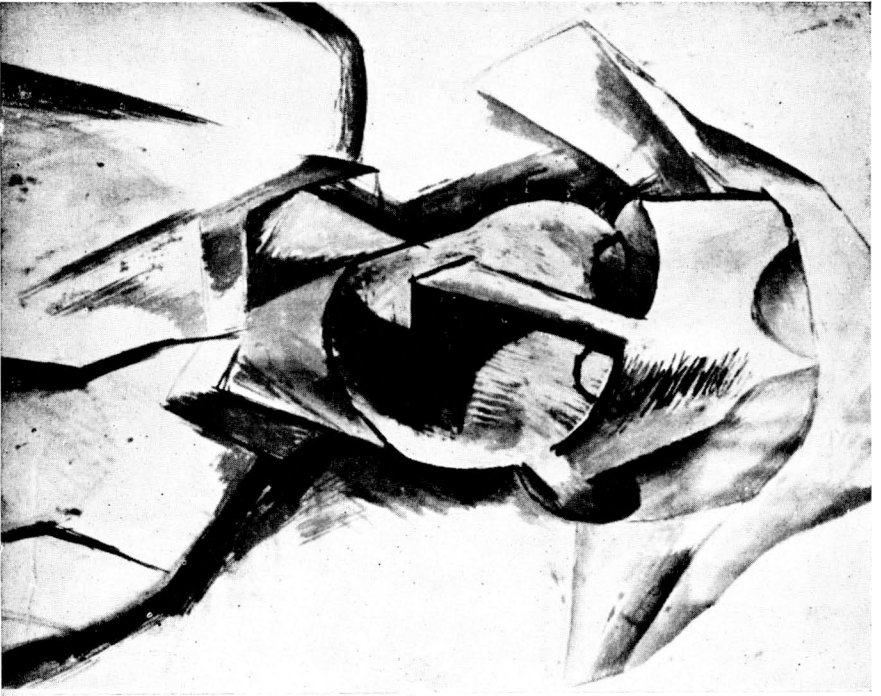
58. Pablo Picasso, Nue couchée (No du cat. 196)



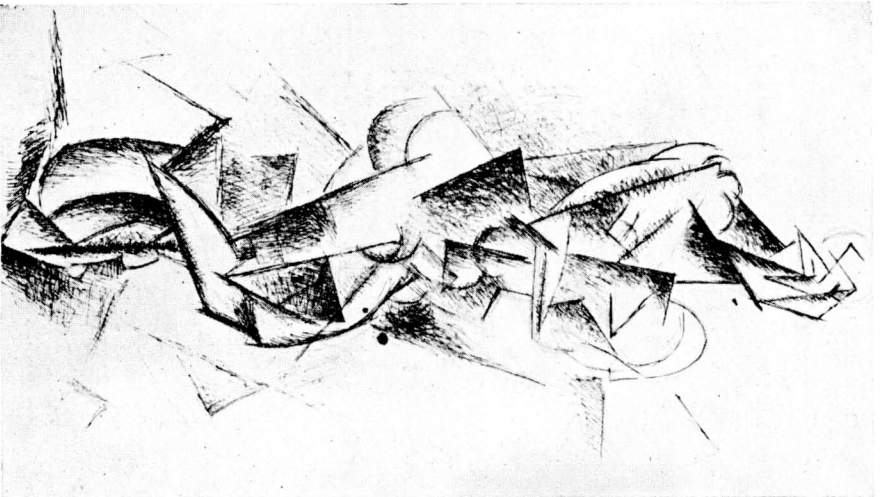
60. Pablo Picasso, Nu, 1907 (No du cat. 200)



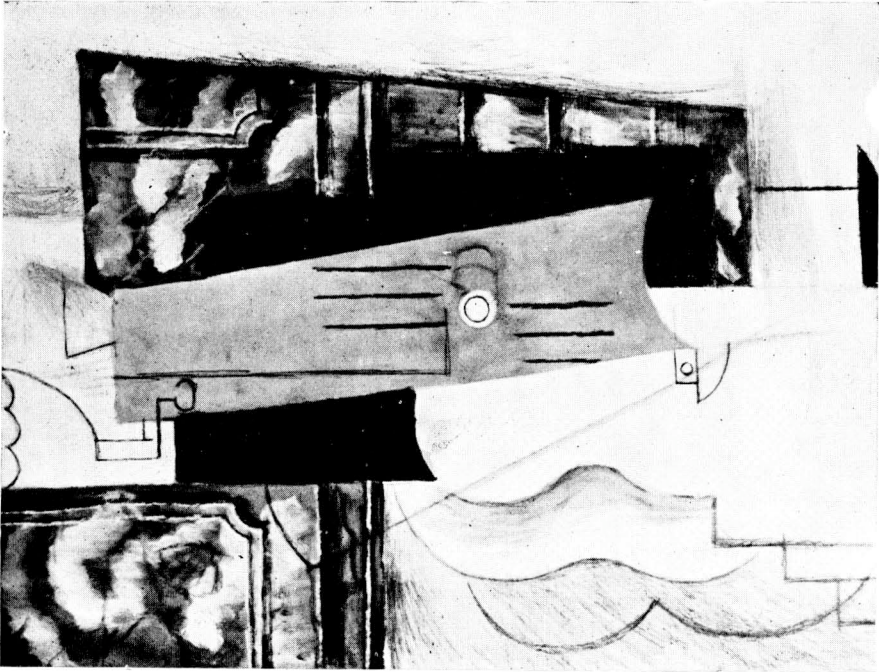
59. Pablo Picasso, Nu debout, 1906 (No du cat. 198)



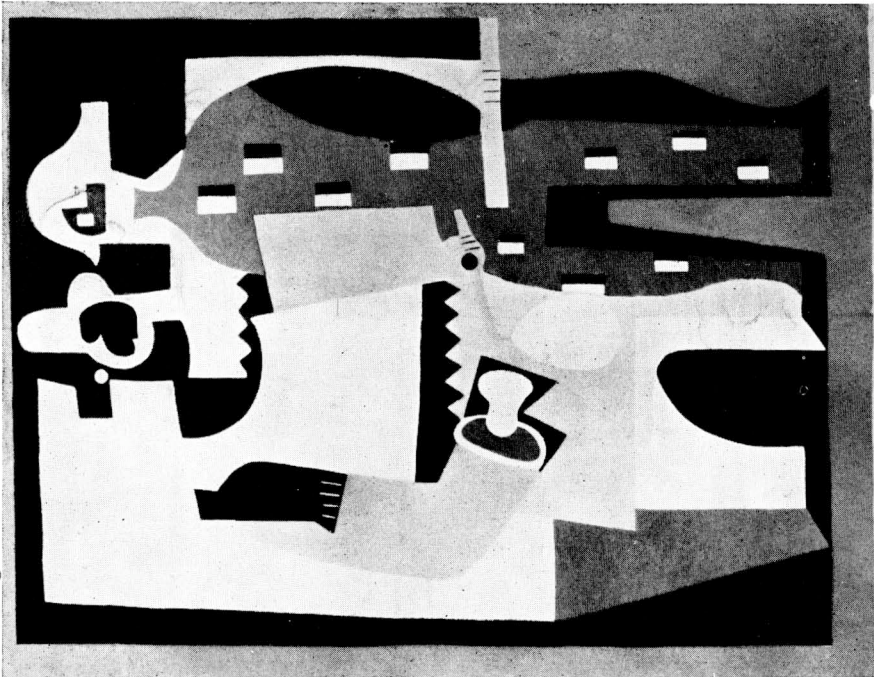
61. Pablo Picasso, *L'Arlequin*, 1908 (No du cat. 202)



62. Pablo Picasso, *La Mère*, 1910 (No du cat. 204)



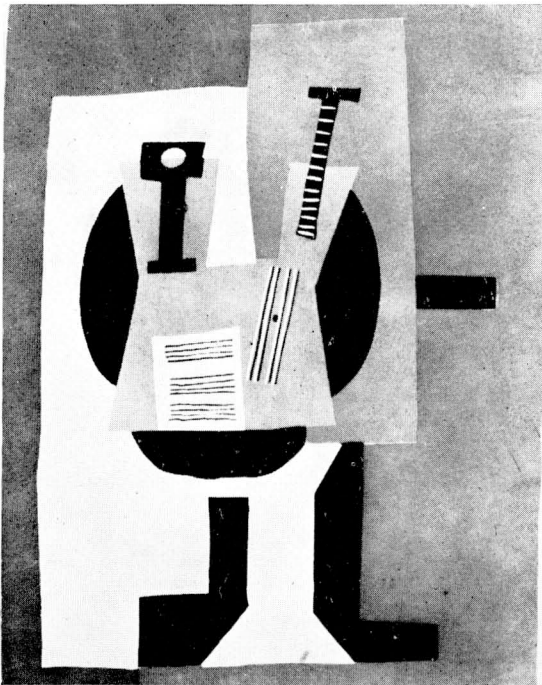
64. Pablo Picasso, *Guitare*, 1913—1914 (No du cat. 207)



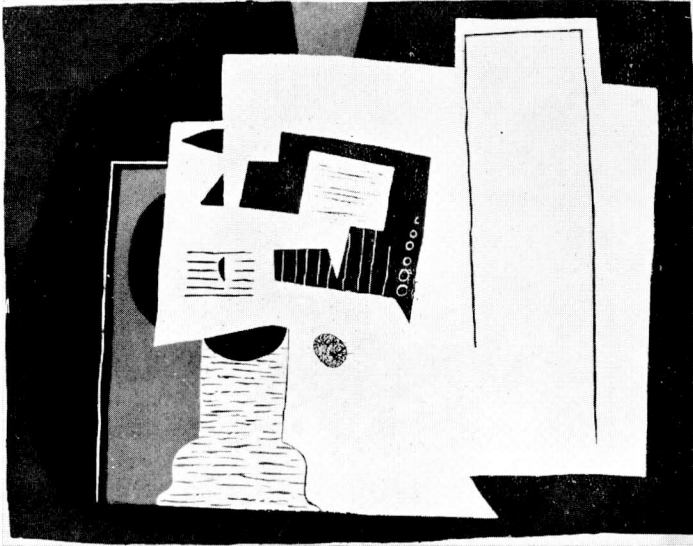
63. Pablo Picasso, *Pierrot et Arlequin* (No du cat. 215)



65. Pablo Picasso, *Pierrot et Colombine* (No du cat. 214)



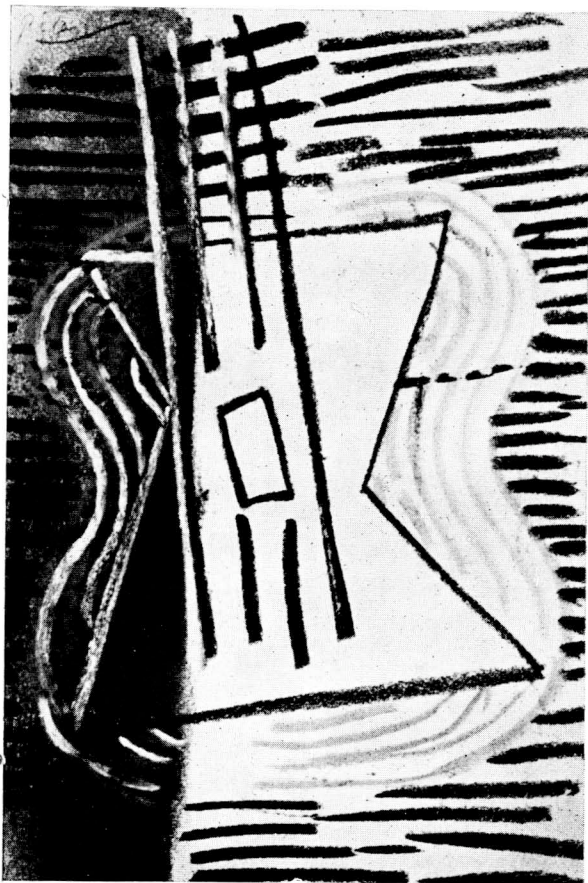
66. Pablo Picasso, *Nature morte* (No du cat. 211)



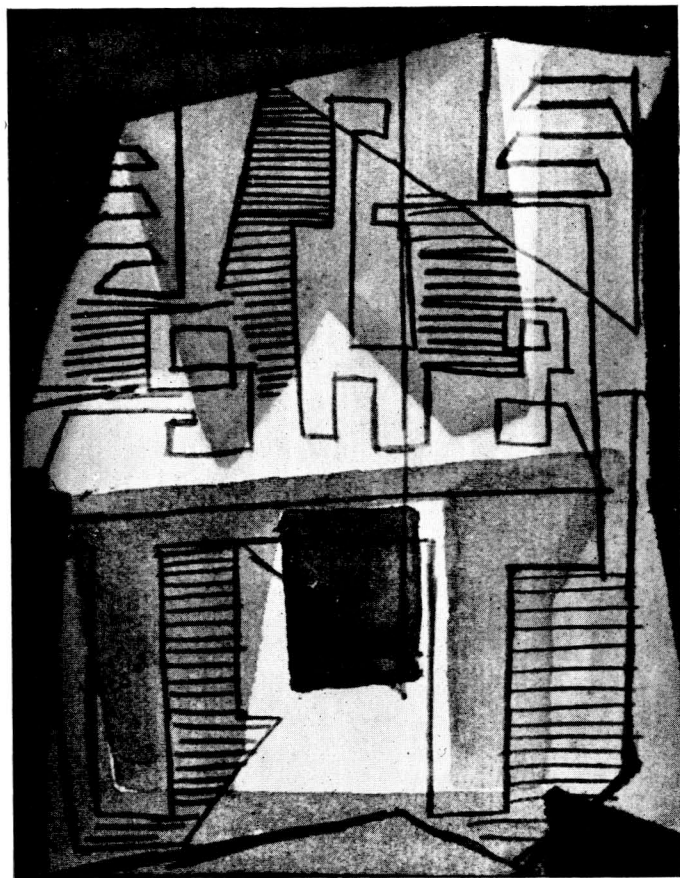
67. Pablo Picasso, *Nature morte à la table* (No du cat. 212)



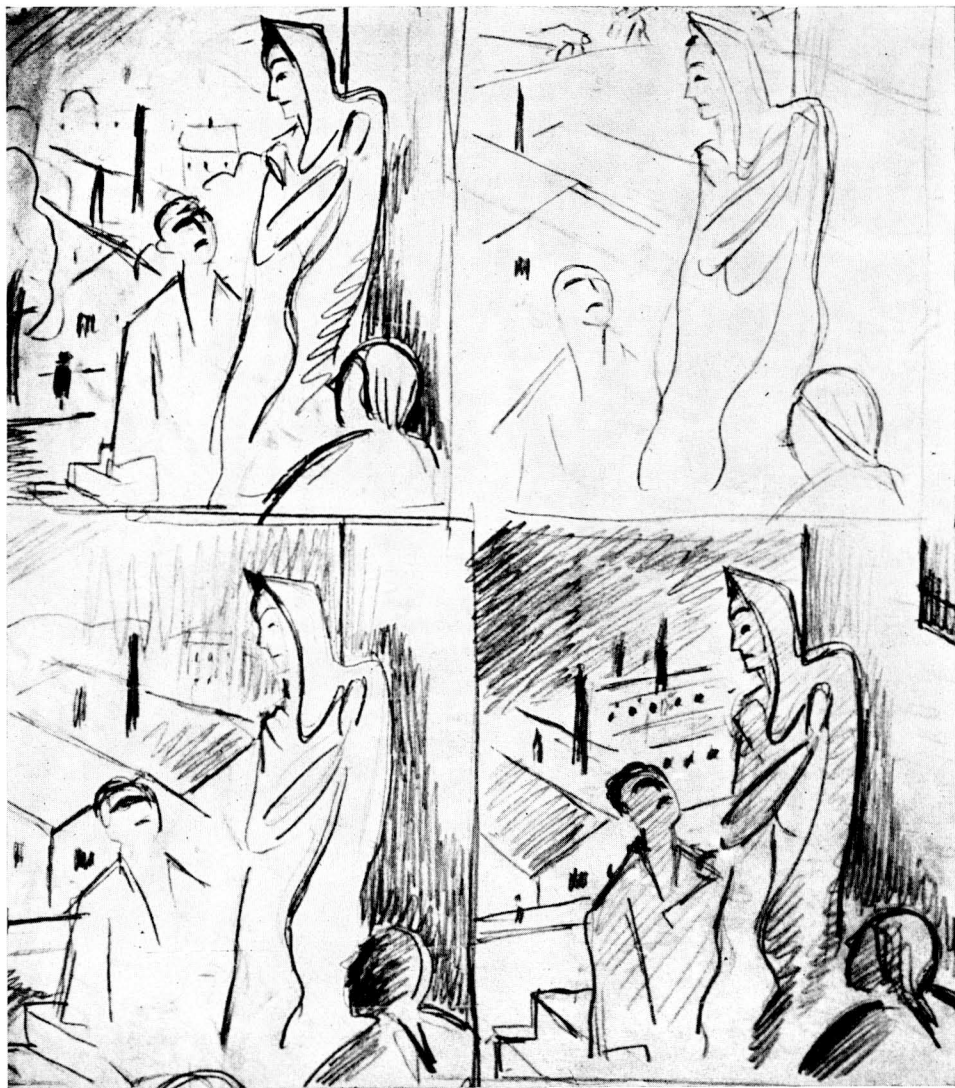
68. Pablo Picasso, *Nature morte à la table* (No du cat. 213)



69. Pablo Picasso, Guitare, 1923 (No du cat. 210)



70. Pablo Picasso, Bouteille et verres, 1922 (No du cat. 209)







73. Jaroslav Král, Proletáři, kolem 1922



74. Jaroslav Král, Muž a ženský akt, kolem 1922





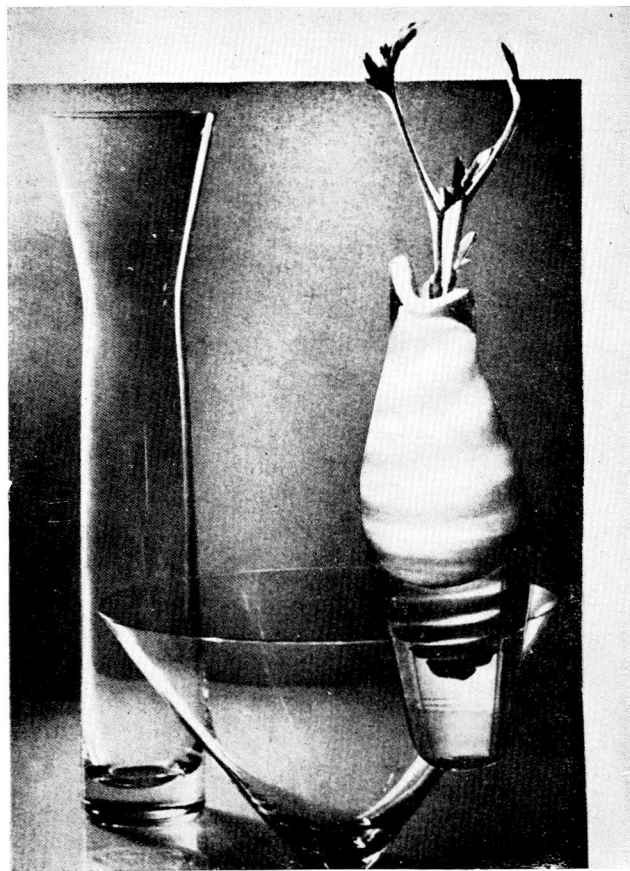
76. Petr Dillinger, Das Flussufer, 1928



77. Petr Dillinger, Zwei Männer beim Steinbruch, 1928



78. Formeneinfachheit: Maschine, Kleidung, dekorative Gegenstände



79. Die Eigenschaften des Materials und der Technik beeinflussen die Form: geblasenes Glas (S. Libenský), Hüttenglas (M. Metelák)