

Kalousek, František

Tabulky 1-47

In: Kalousek, František. *Břeclav-Pohansko. I, Velkomoravské pohřebiště u kostela : archeologické prameny z pohřebiště*. Brno: Universita J.E. Purkyně, 1971, pp. [223]-271

Stable URL (handle): <https://hdl.handle.net/11222.digilib/120627>

Access Date: 16. 02. 2024

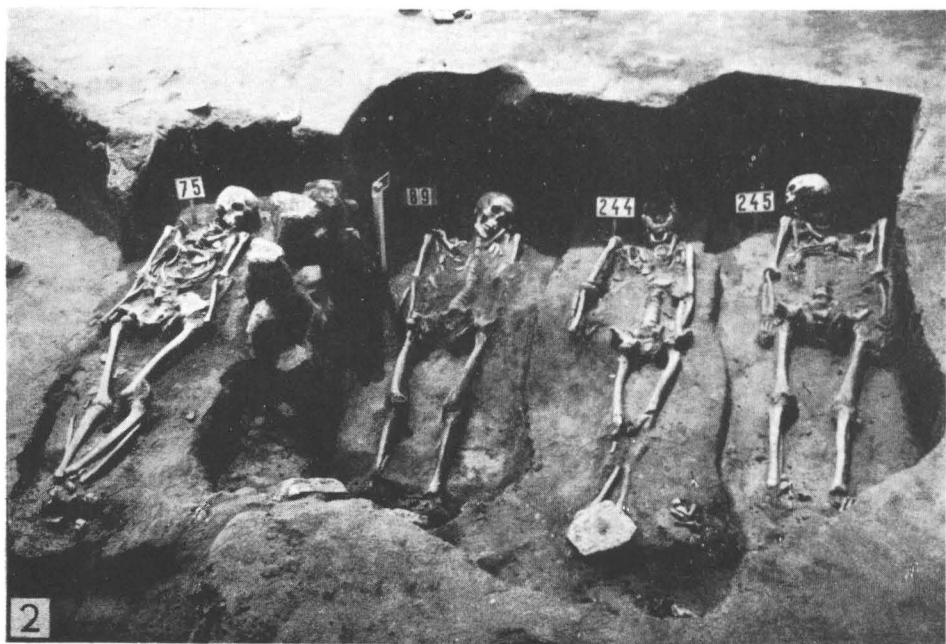
Version: 20220831

Terms of use: Digital Library of the Faculty of Arts, Masaryk University provides access to digitized documents strictly for personal use, unless otherwise specified.

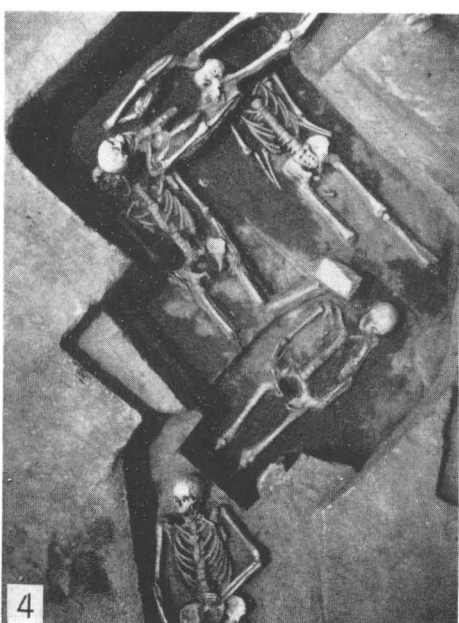
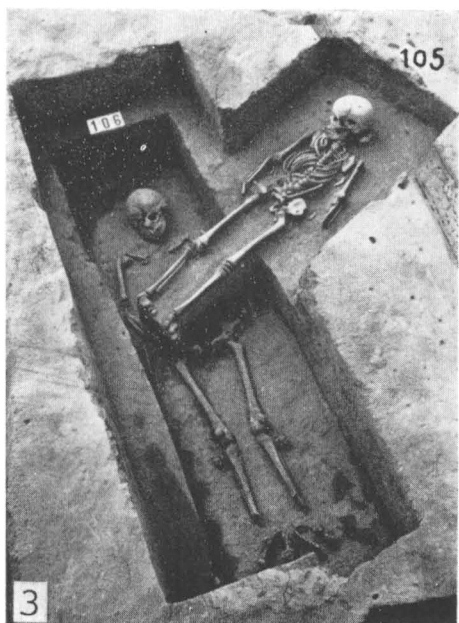
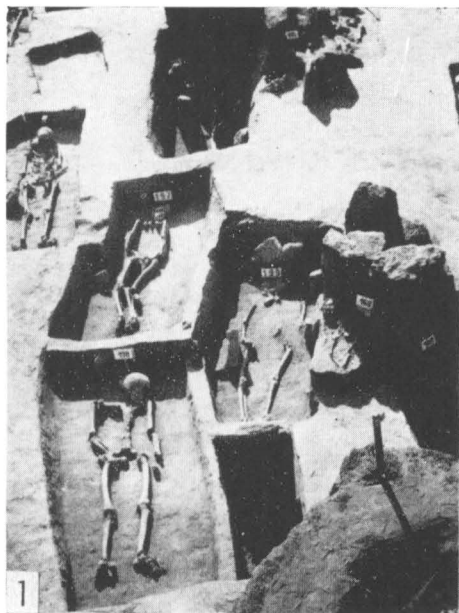
TABULKY
TAFELN



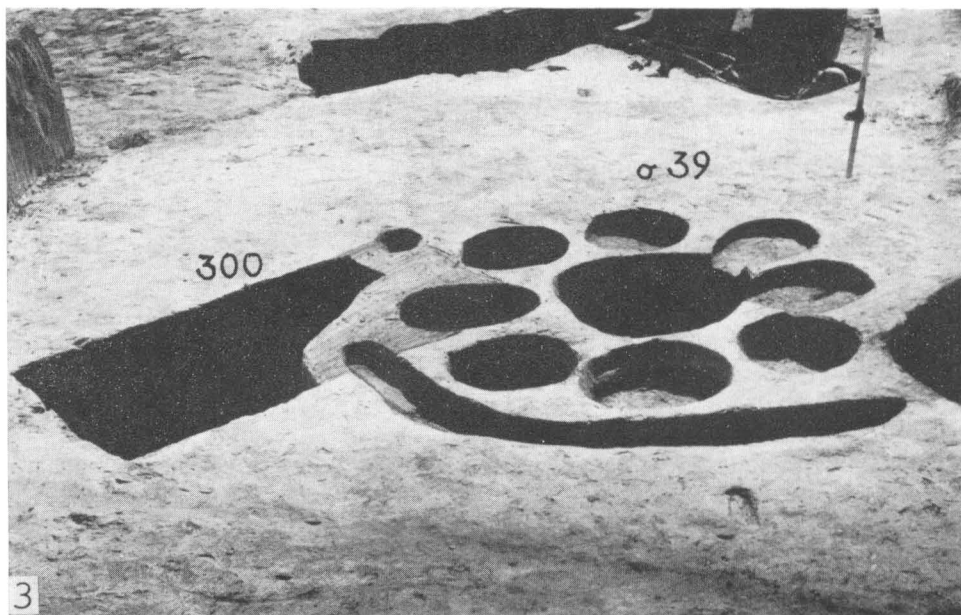
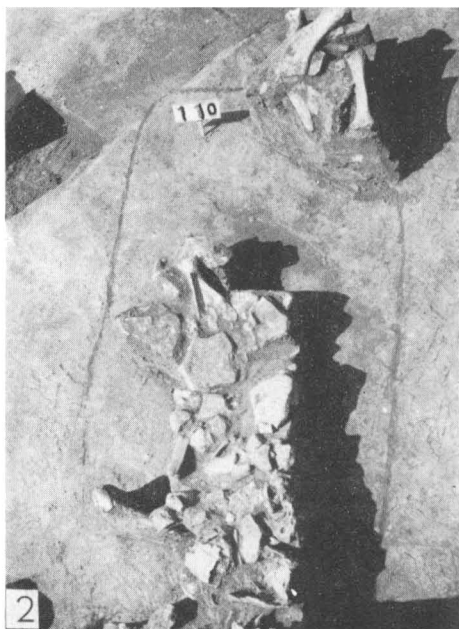
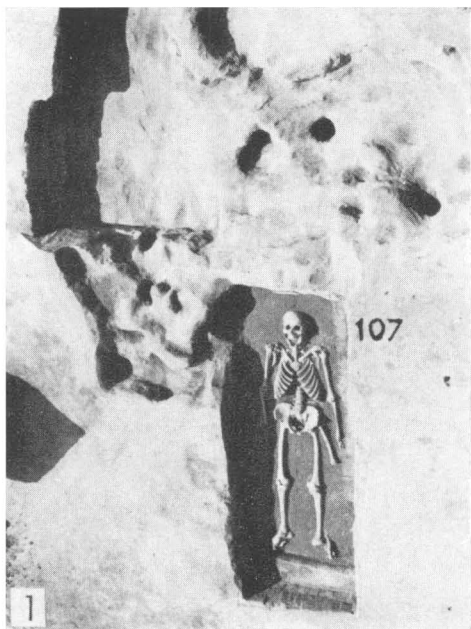
Tab. 1. 1, 2: Pohřebiště u kostela. Gräberfeld bei der Kirche.



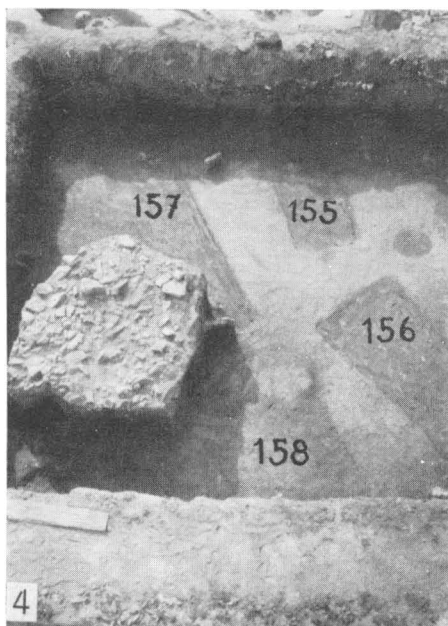
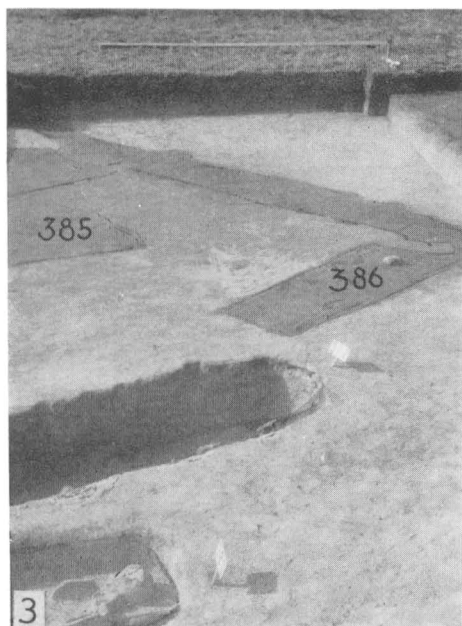
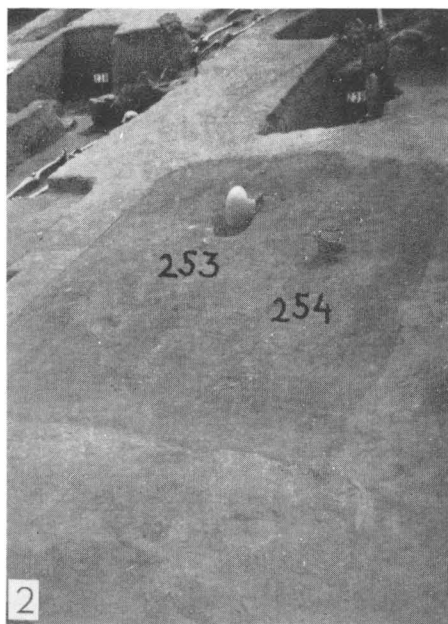
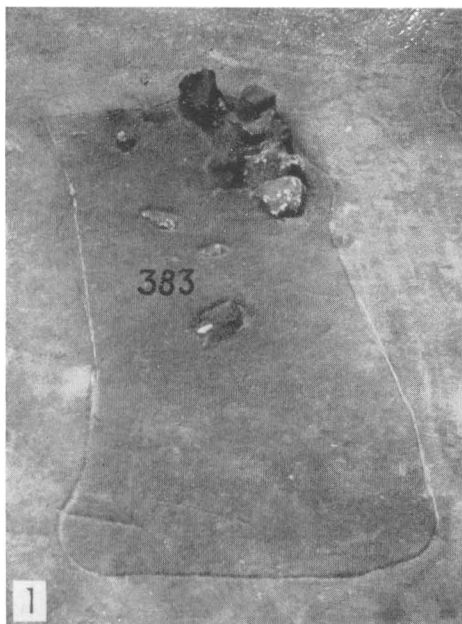
Tab. 2. 1: Hroby u přístavku kostela. Gräber beim Zubau der Kirche;
2: Hroby v řadě. Gräber in der Reihe.



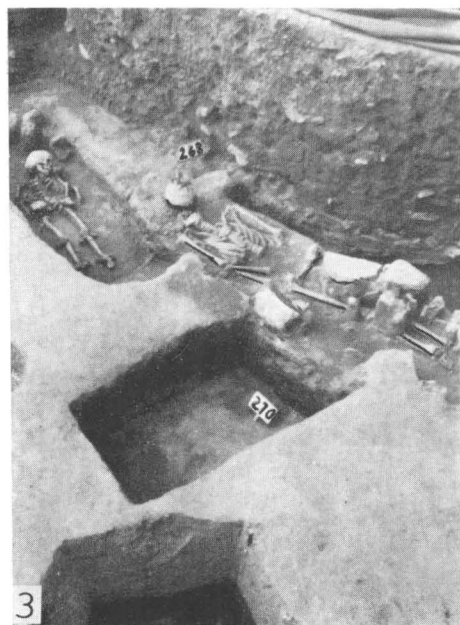
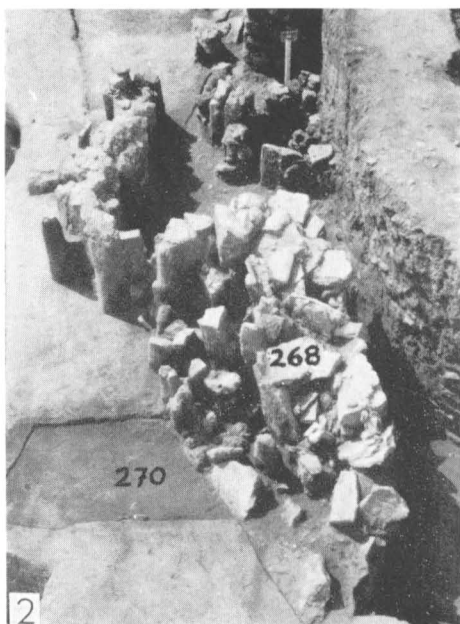
Tab. 3. 1, 2: Skupiny hrobů. Gräbergruppen; 3, 4: Stratigrafie hrobů. Stratigraphie der Gräber



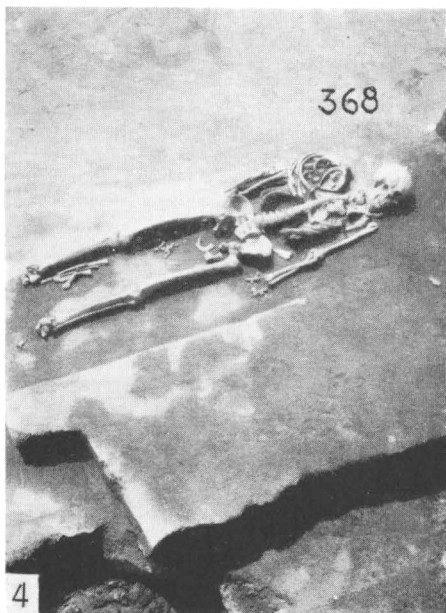
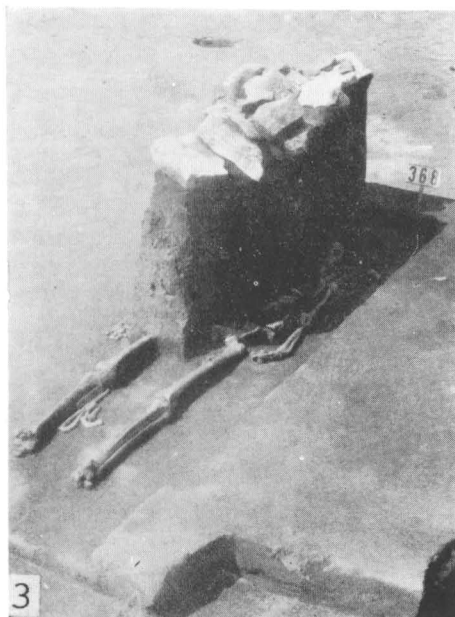
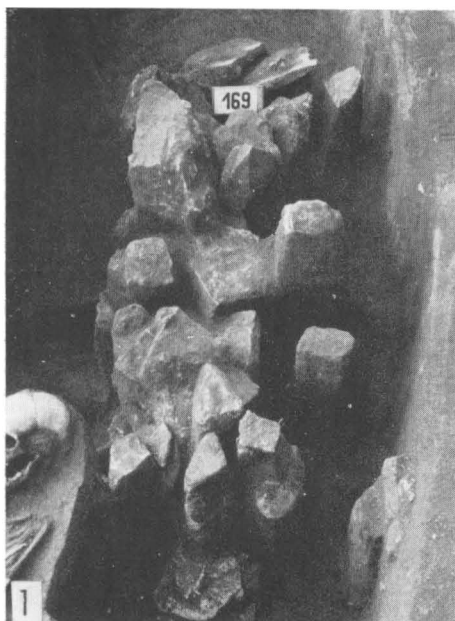
Tab. 4. 1: Hrob 107 zahloubený do sídlištního objektu. Grab 107 eingetieft im Siedlungsobjekt; 2: Hrob pod sídlištním objektem. Grab unter dem Siedlungsobjekt; 3: Hrob porušený sídlištním objektem. Grab zerstört durch ein Siedlungsobjekt.



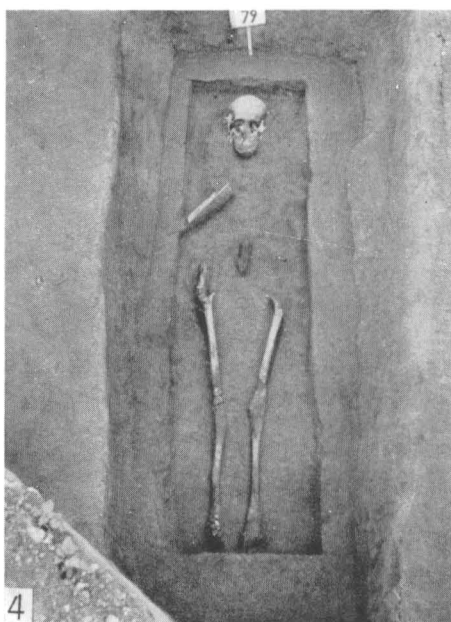
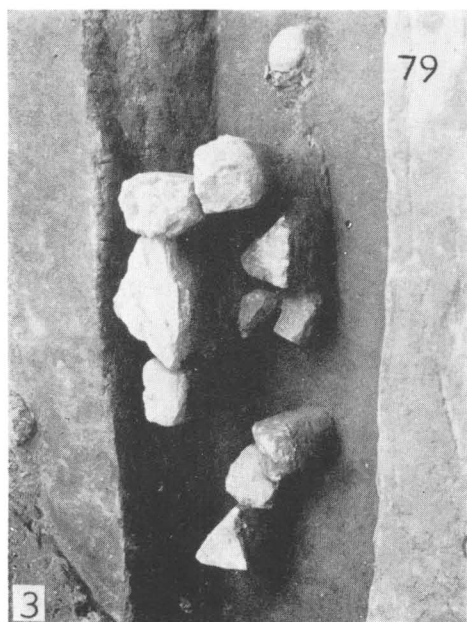
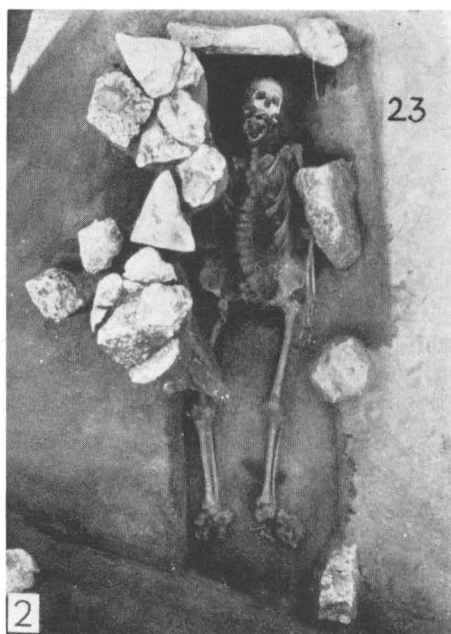
Tab. 5. 1–4: Zásypy hrobových jam. Verschüttungen der Gräbergruben.



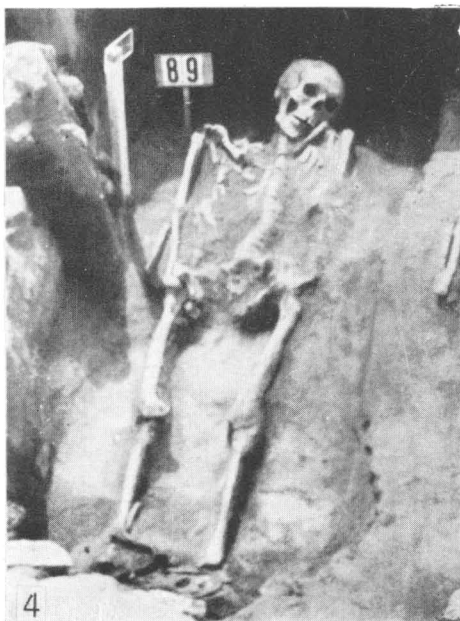
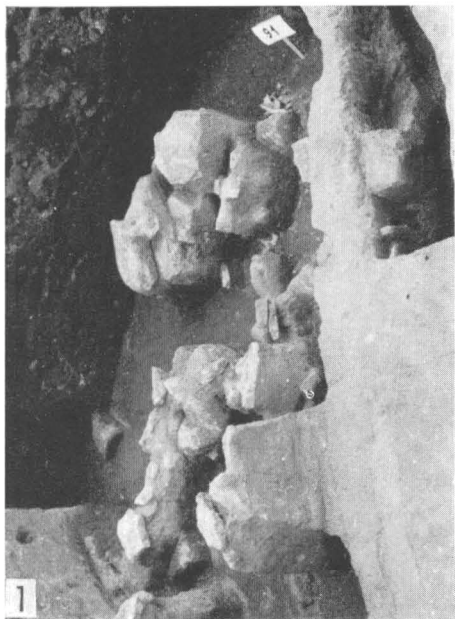
Tab. 6. 1—4: Různé fáze výzkumu hrobu 268. Verschiedene Grabungsphasen des Grabes 268



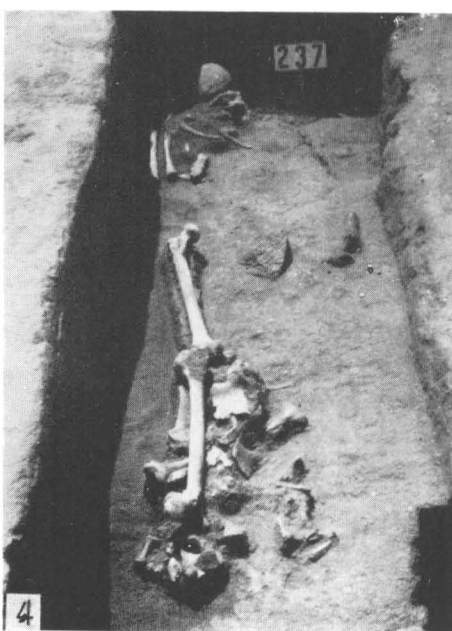
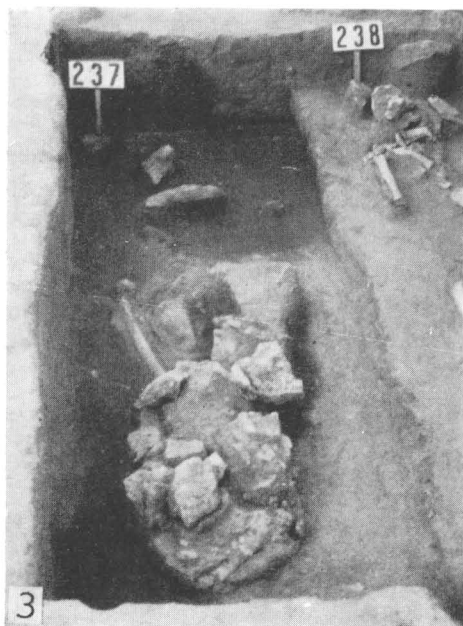
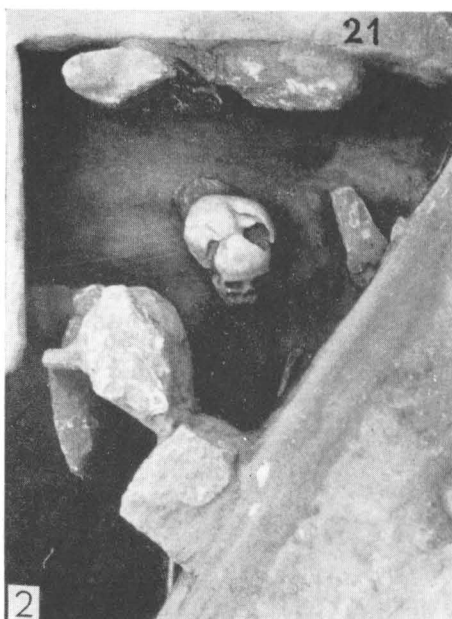
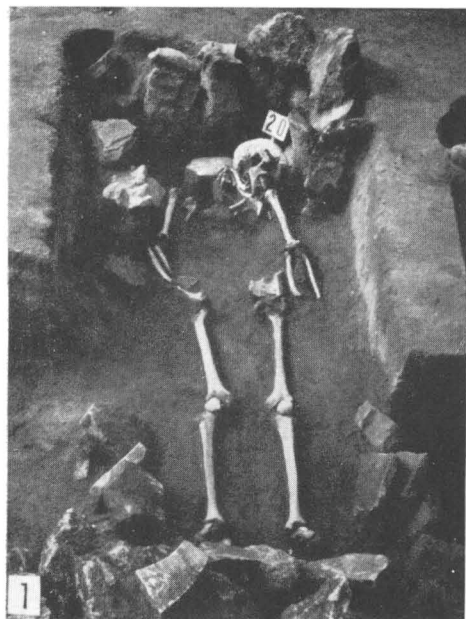
Tab. 7. 1—4: Hroby 169 a 368 s kamenným závalem. Steinverschüttung der Gräber 169 u. 368.



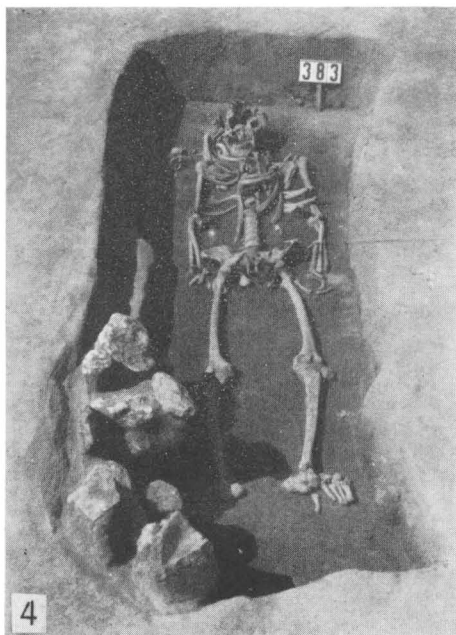
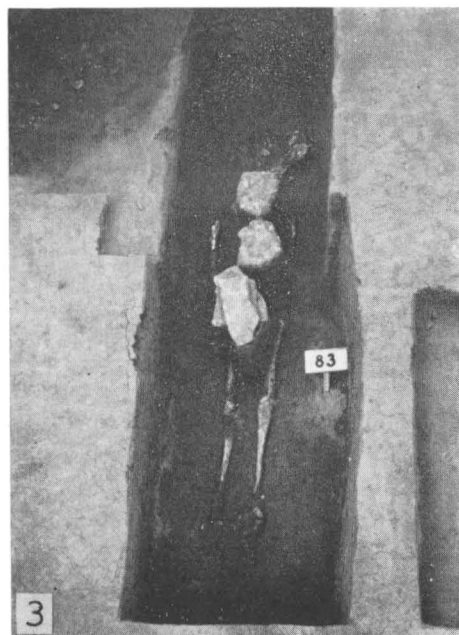
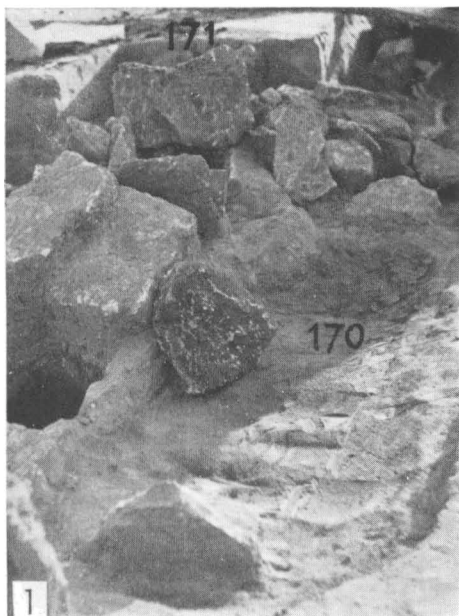
Tab. 8. 1—4: Hroby 23 a 79 se závaem kamenů. Steinverschüttung der Gräber 23 u. 79.



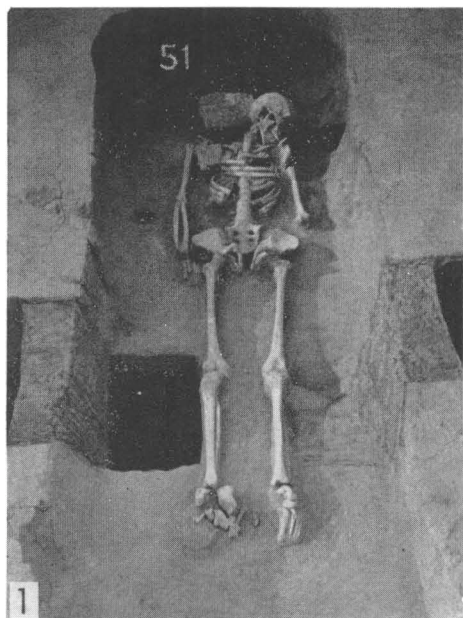
Tab. 9. 1–4: Hroby 91 a 89 se závalem kamenů. Steinverschüttung der Gräber 91 u. 89.



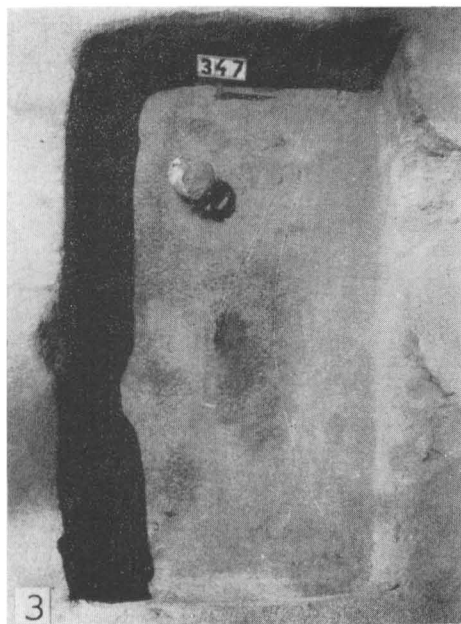
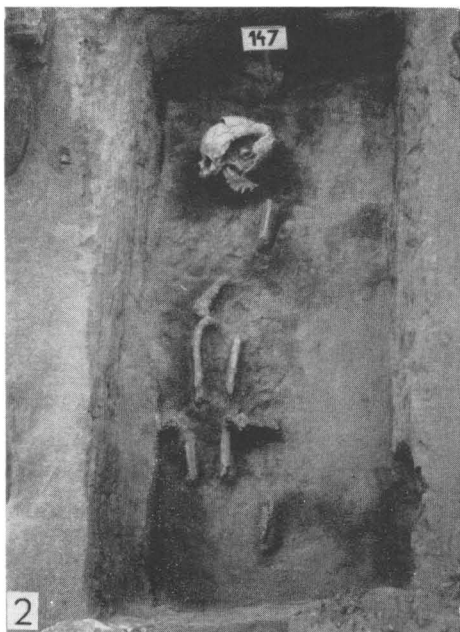
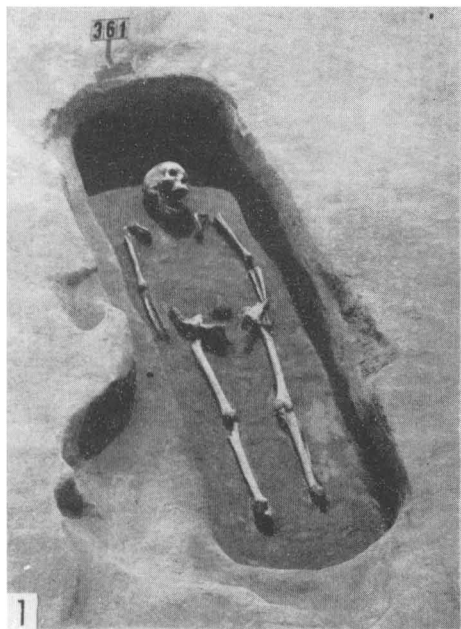
Tab. 10. 1—4: Hroby 20, 21, 237 se závalem kamenů. Steinverschüttung der Gräber 20, 21, 237.



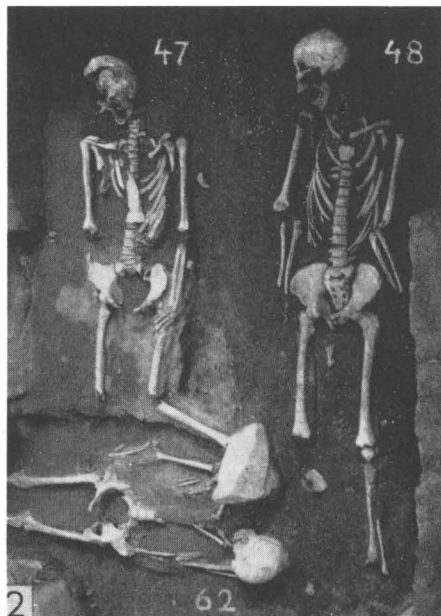
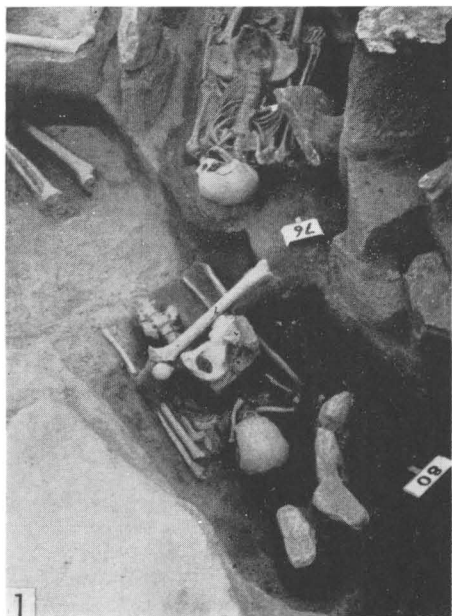
Tab. 11. 1–2: Kamenná „skříňka“ hrobu 171. „Steinkiste“ des Grabes 171.
3, 4: Kameny v hrobě 83 a 383. Gräber 83 u. 383.



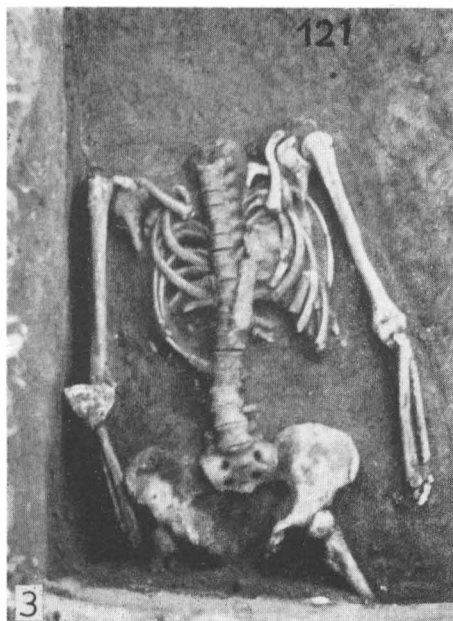
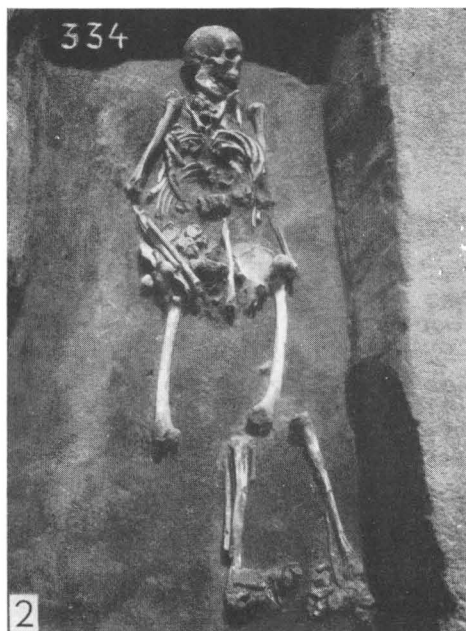
Tab. 12. 1–4: Ukázky hrobů v superpozici nad palisádovým žlabem. Superposition der Gräber über der Palisadenrinne.



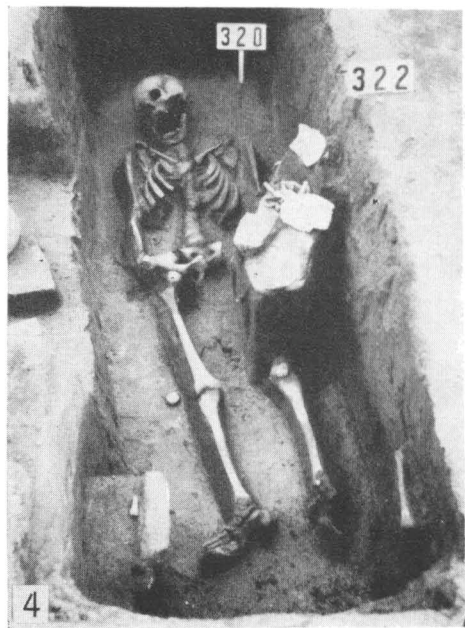
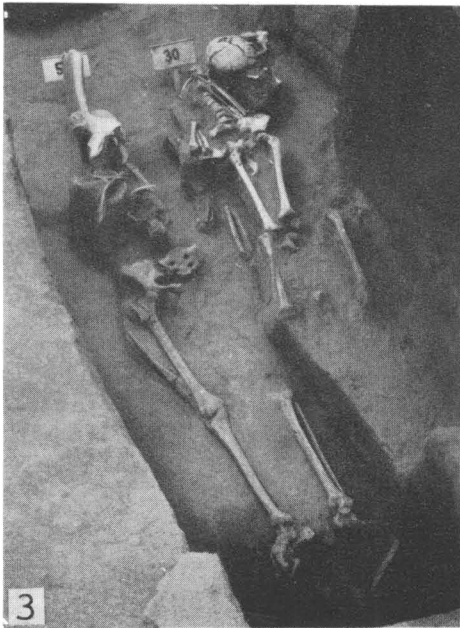
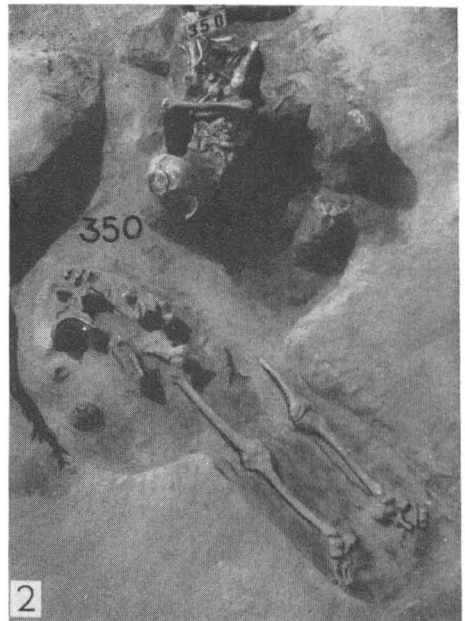
Tab. 13. 1–4: Ukázky různé zachovalosti koster. Verschiedene Stufen von Skeletterhaltung.



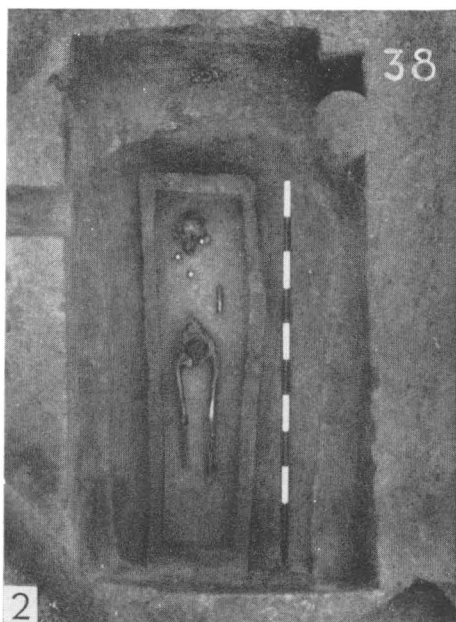
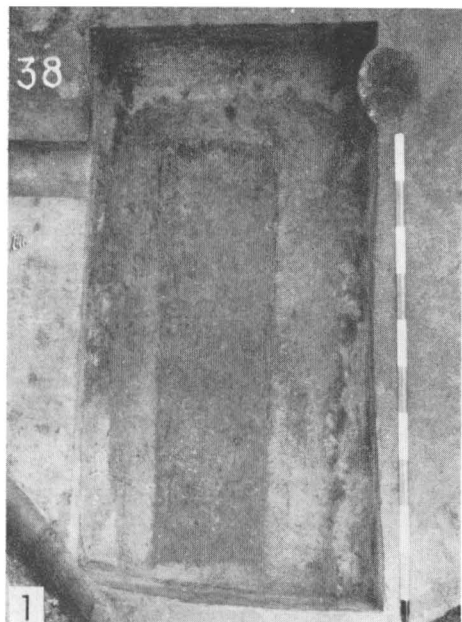
Tab. 14. 1—4: Rozrušené hroby. Zerstörte Gräber.



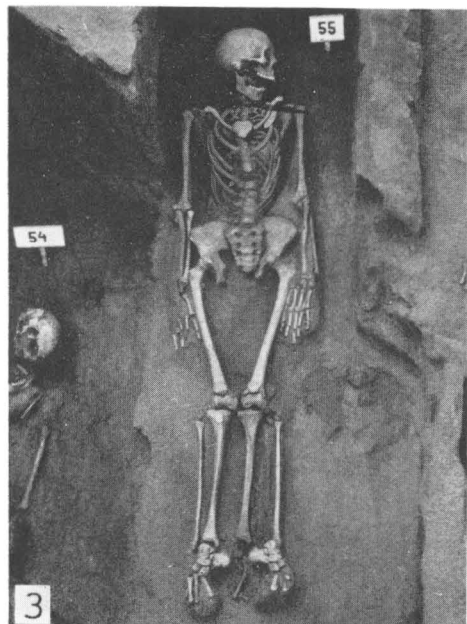
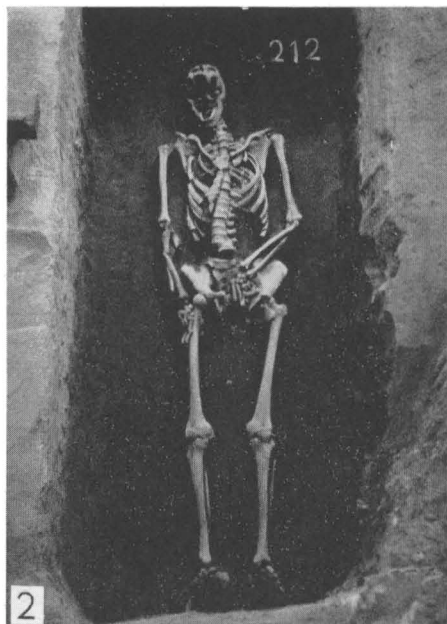
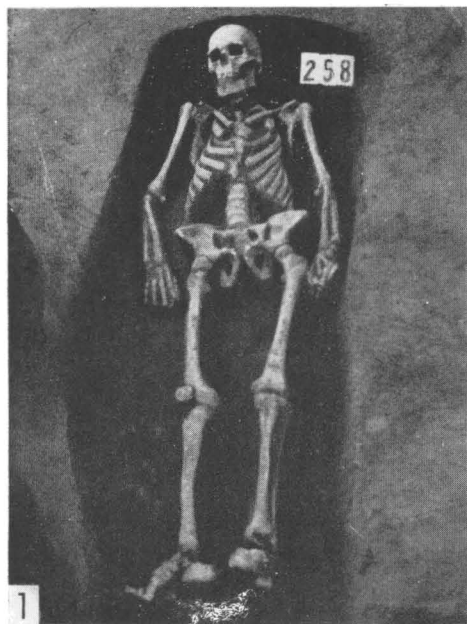
Tab. 15. 1—4: Rozrušené hroby. Zerstörte Gräber.



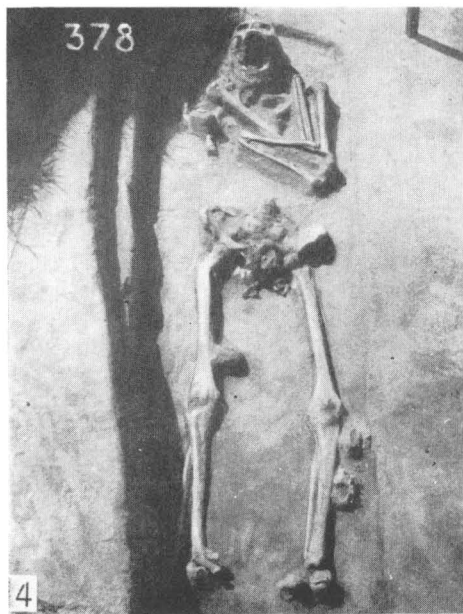
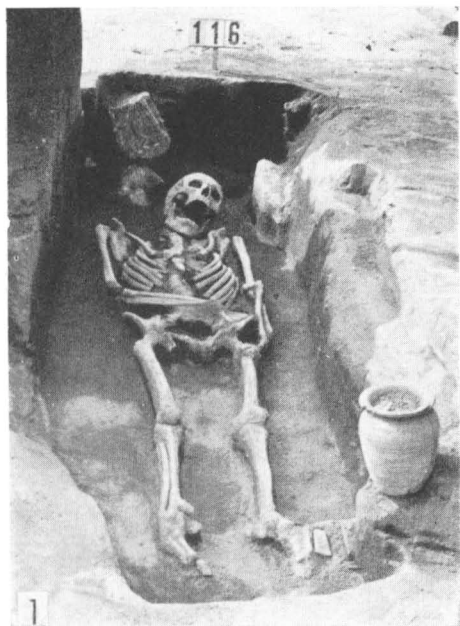
Tab. 16. 1—4: Rozrušené hroby. Zerstörte Gräber.



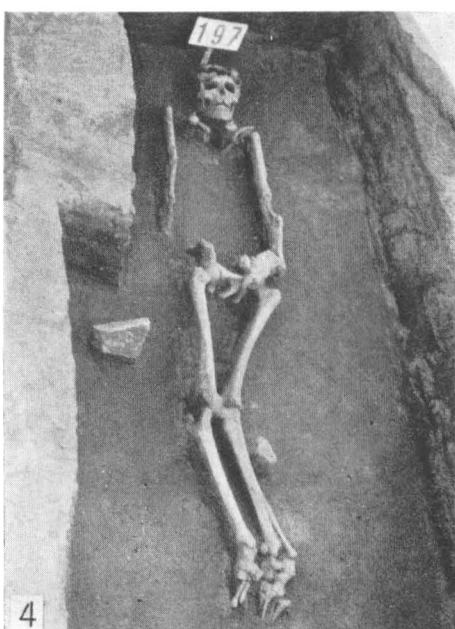
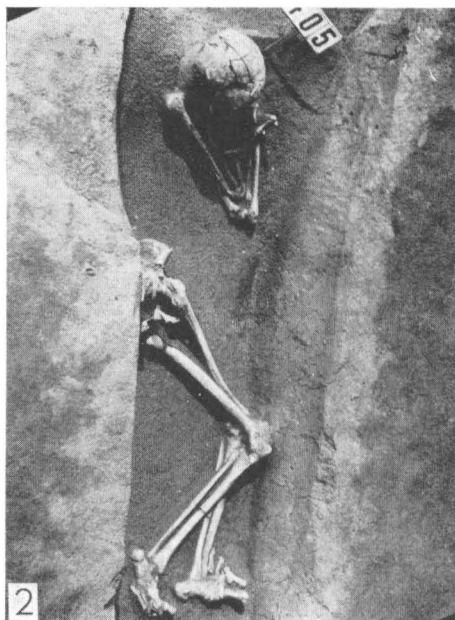
Tab. 17. 1–3: Hroby s rakvemi. Sarggräber; 4: Hrob s rakví podloženou kameny. Grab mit dem Sarg unterlegt durch Steinplatten.



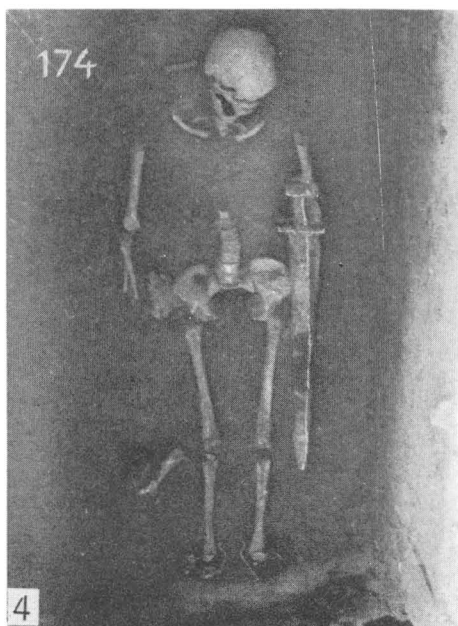
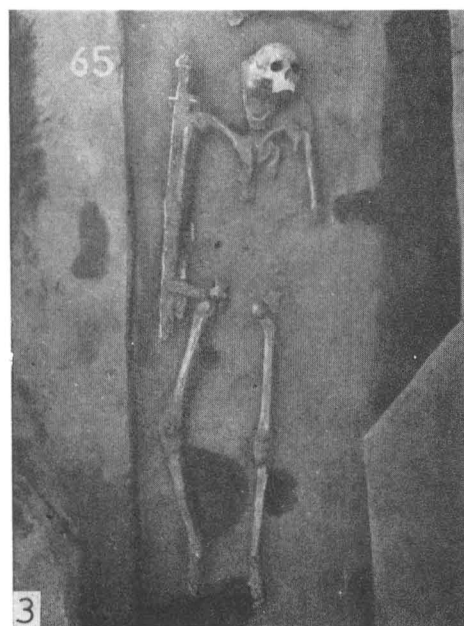
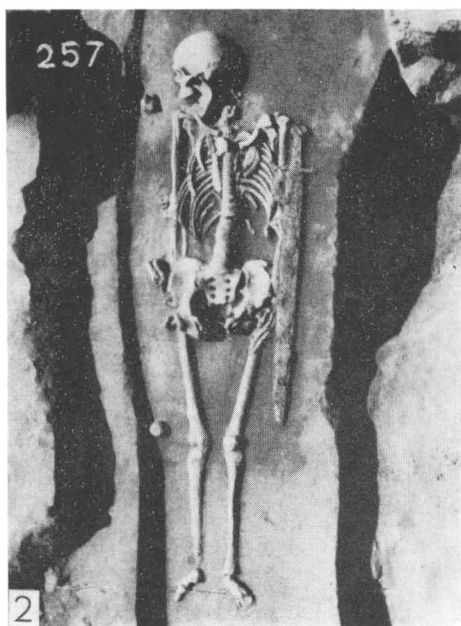
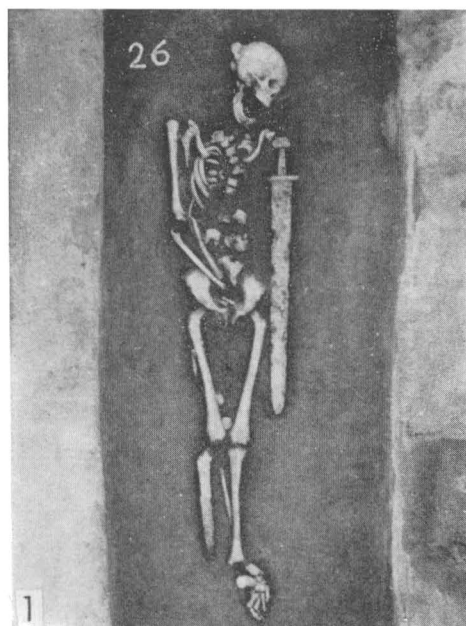
Tab. 18. 1—4: Poloha hlavy. Kopflage.



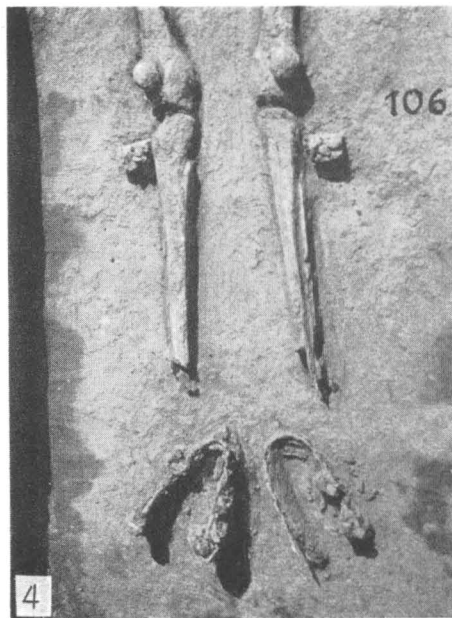
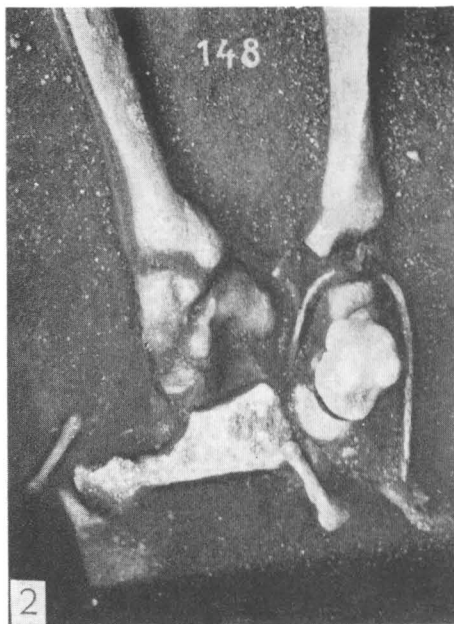
Tab. 19. 1—4: Poloha rukou. Armlage.



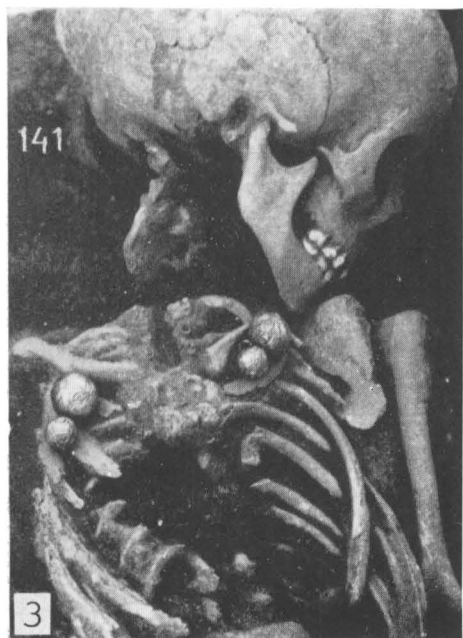
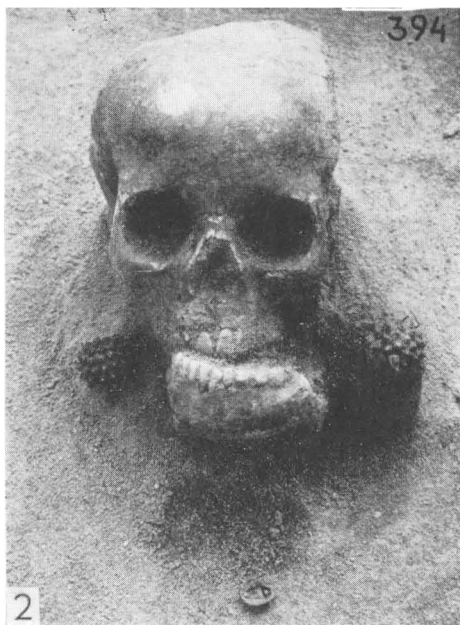
Tab. 20. 1–4: Nepravidelná poloha nohou. Unregelmässige Beinlage.



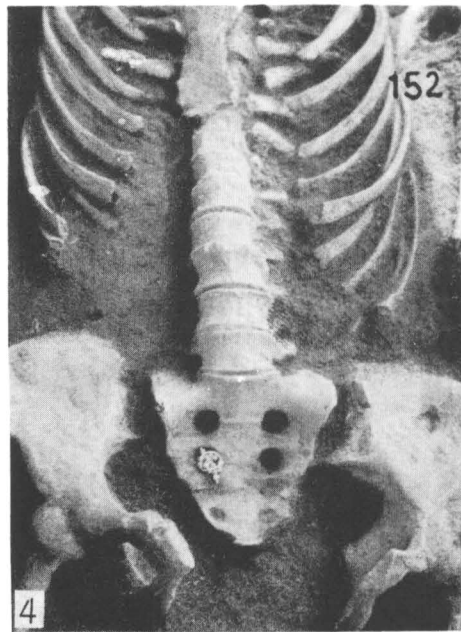
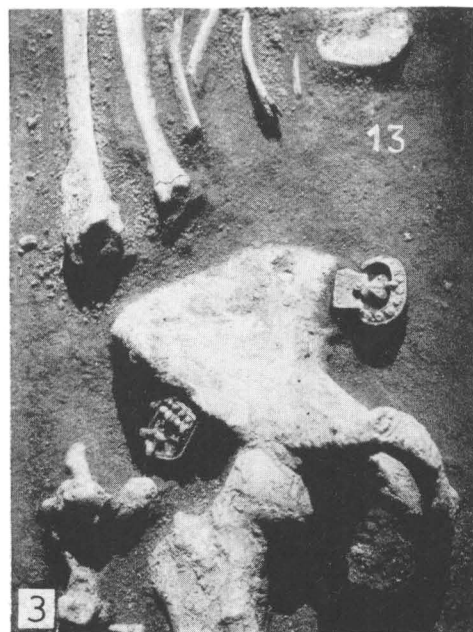
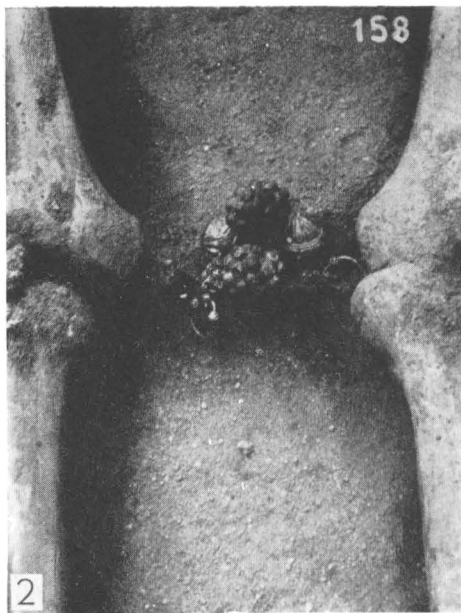
Tab. 21. 1–4: Hroby s meči. Gräber mit Schwertern.



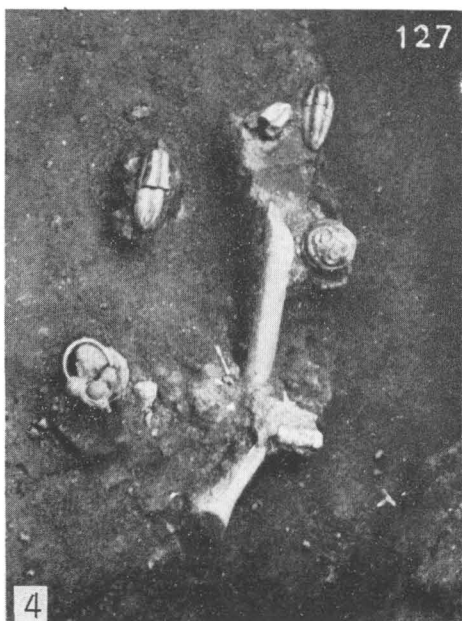
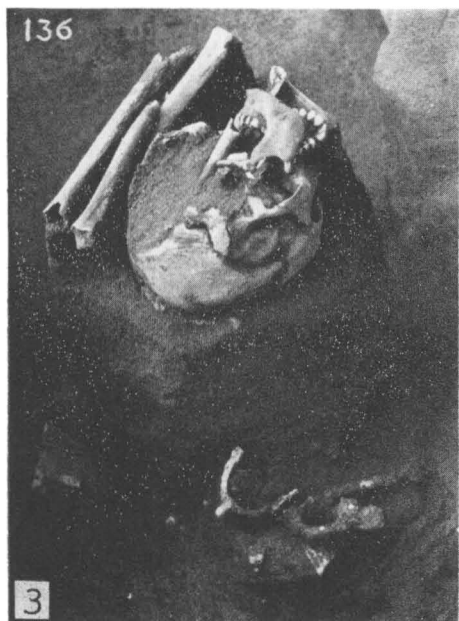
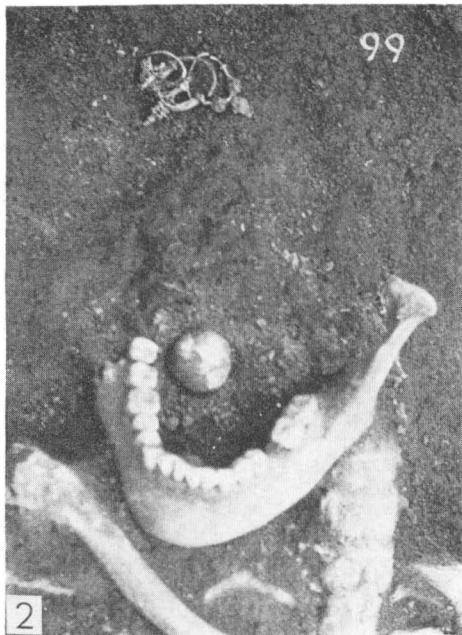
Tab. 22. 1—4: Hroby s ostruhami. Gräber mit Sporen.



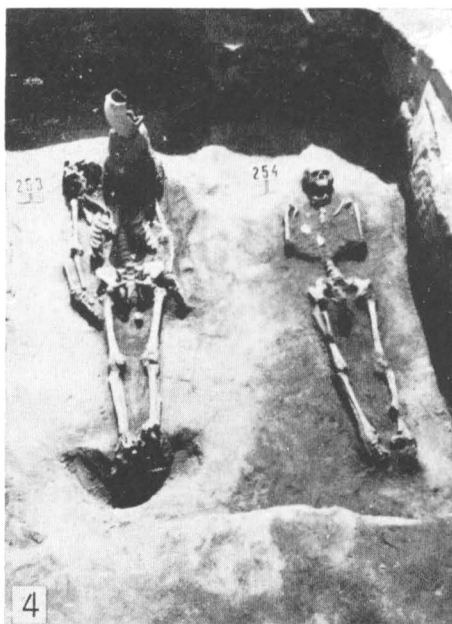
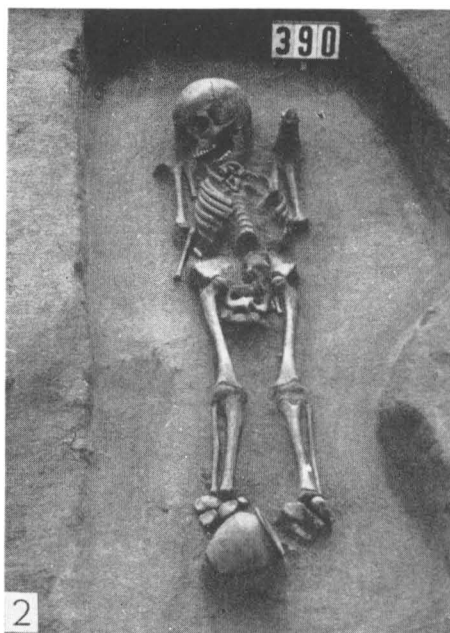
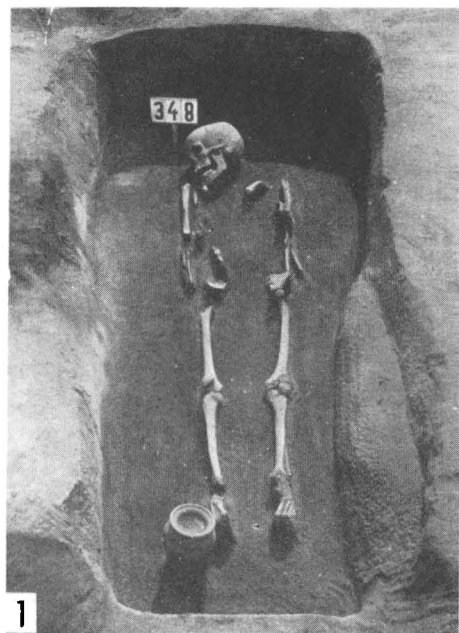
Tab. 23. 1–3: Umístění gombíků. Lage der Kugelknöpfe; 4: Umístění gombíků a náušnic. Lage der Kugelknöpfe u. der Ohringe.



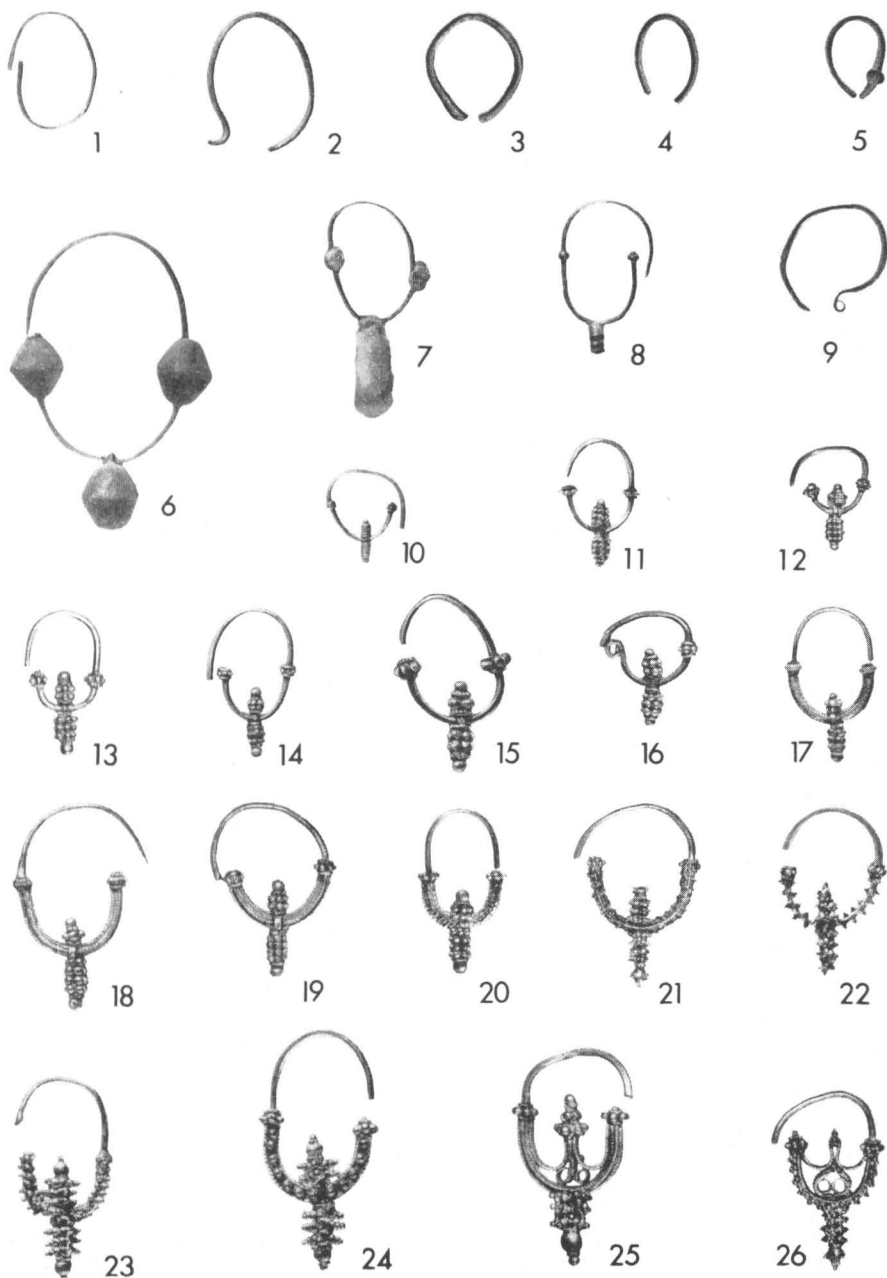
Tab. 24. 1: Detail kostry s řetězovým nákrčníkem. Skelettdetail mit dem Halskettenband; 2, 4 Nepravidelné umístění milodarů. Unregelmässige Lage der Beigaben. 3: Kostra s garniturou kování pásu. Skelett mit der Garnitur des Gürtelbeschlages.



Tab. 25. 1, 2: Umístění gombíku v ústech. Lage des Knopfes im Mund; 3, 4: Milodary v rozrušených hrobech. Beigaben in den zerstörten Gräbern.



Tab. 26. 1–4: Umístění nádoby v hrobech. Lage des Gefäßes in den Gräbern.



Tab. 27. 1 : H391-2; 2 : H8-1; 3 : H1-1; 4 : H1-2; 5 : H374-2; 6 : H398-1; 7 : H345-3; 8 : H1-3; 9 : H104-1; 10 : H330-2; 11 : H38-3; 12 : H96-1; 13 : H270-1; 14 : H344-1; 15 : H63-6; 16 : H82-1; 17 : H70-1; 18 : H63-3, 4; 19 : H97-1; 20 : H136-4; 21 : H262-3; 22 : H38-1; 23 : H178-1; 24 : H63-7; 25 : H99-3; 26 : H262-1. (1 : 1)



1



2



3



4



5



6



7



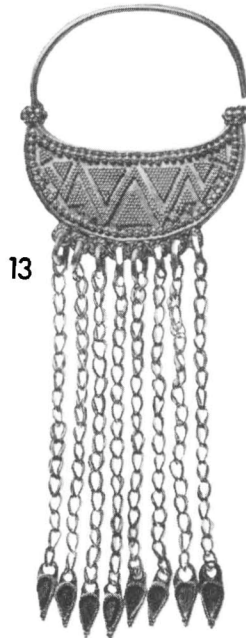
8



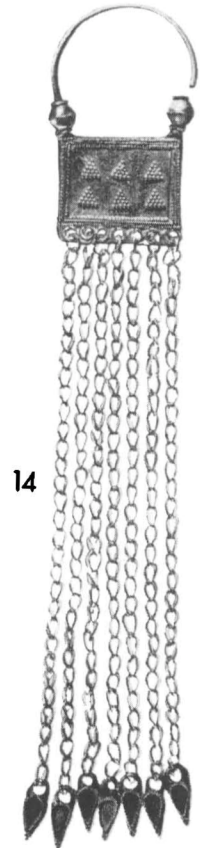
10



9



13



14



11



12

Tab. 28. 1: H135-3; 2: H135-9; 3: H135-5; 4: H313-2; 5, 6: H256-1, 2; 7: H158-2; 8: H197-2; 9: H152-2; 10: H256-3; 11: H63-9; 12: H67-3; 13: H43-2; 14: H158-8. (1: 1)



1b



1a



1c



2b



2a



2c



3b



3a



3c



4b



4a



4c

Tab. 29. 1a, b, c: H360-1; 2a, b, c: H9-1; 3a, b, c: H43-1; 4a, b, c: H135-2. (1 : 1)



1b



1a



1c



2b



2a



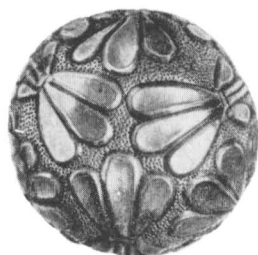
2c



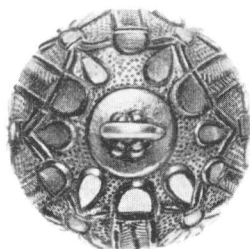
3b



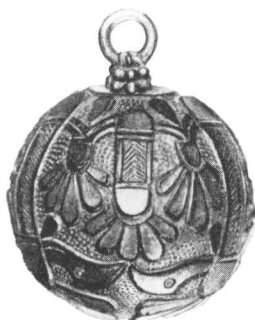
3a



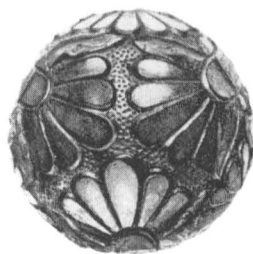
3c



4b



4a



4c

Tab. 30. 1a, b, c: H127-1; 2a, b, c: H197-4; 3a, b, c: H336-1; 4a, b, c: H256-9. (1:1)



1b



2b



3b



4b



1a



2a



3a



4a



1c



2c



3c



4c



5b



5a



5c



6



7b



7a



7c

Tab. 31. 1a, b, c: H225-16; 2a, b, c: H205-5; 3a, b, c: H329-1; 4a, b, c: H230-1; 5a, b, c: H342-6; 6: H128-1; 7a, b, c: H158-4. (1:1)



1b

1a

1c

2



3b

3a

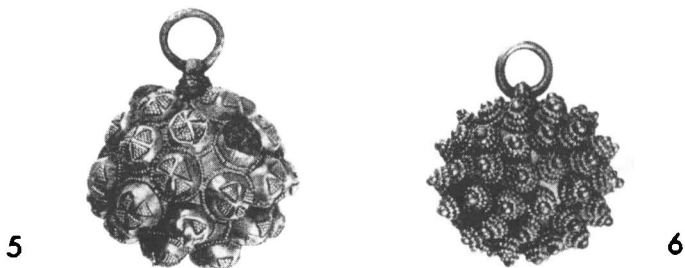
3c



4b

4a

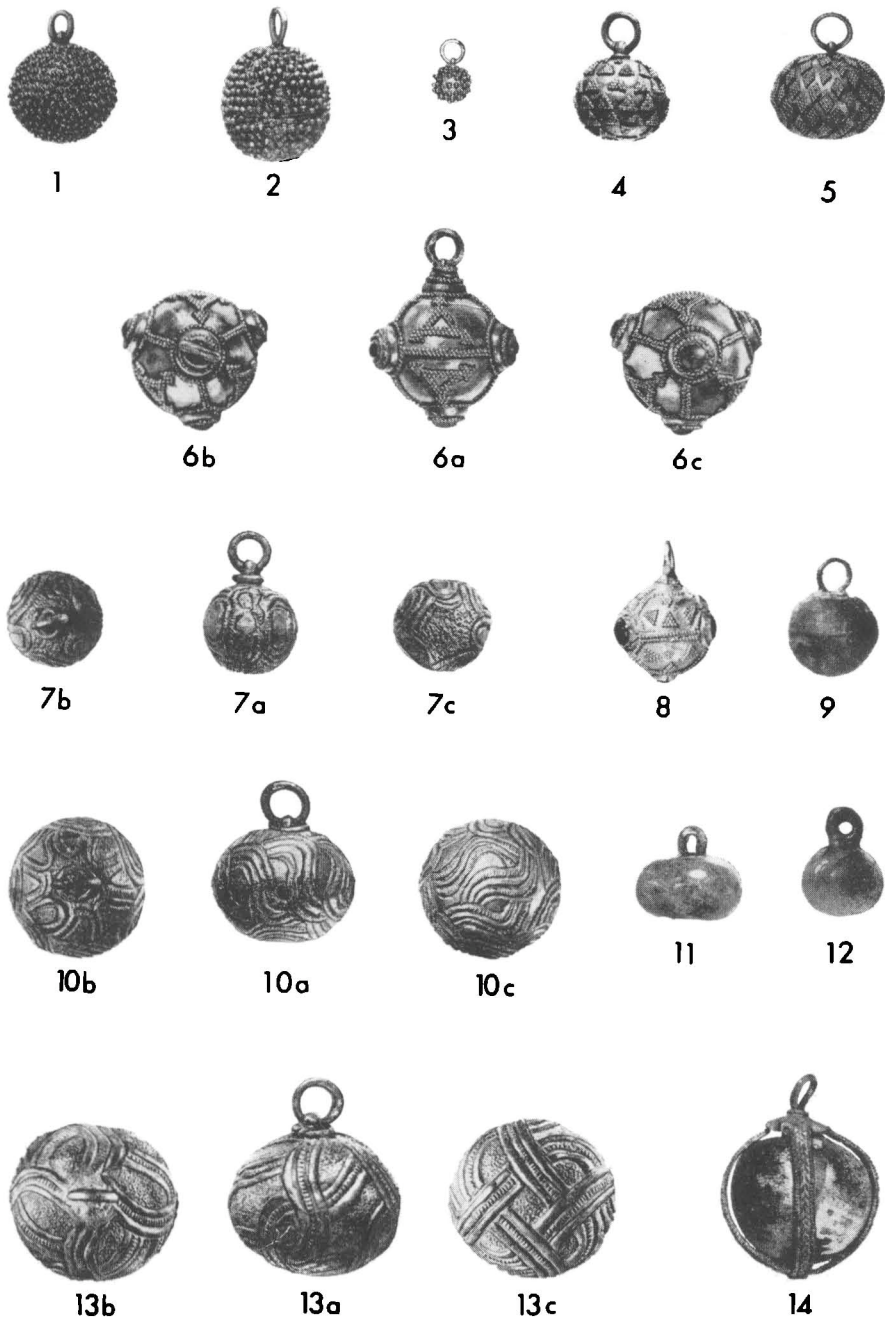
4c



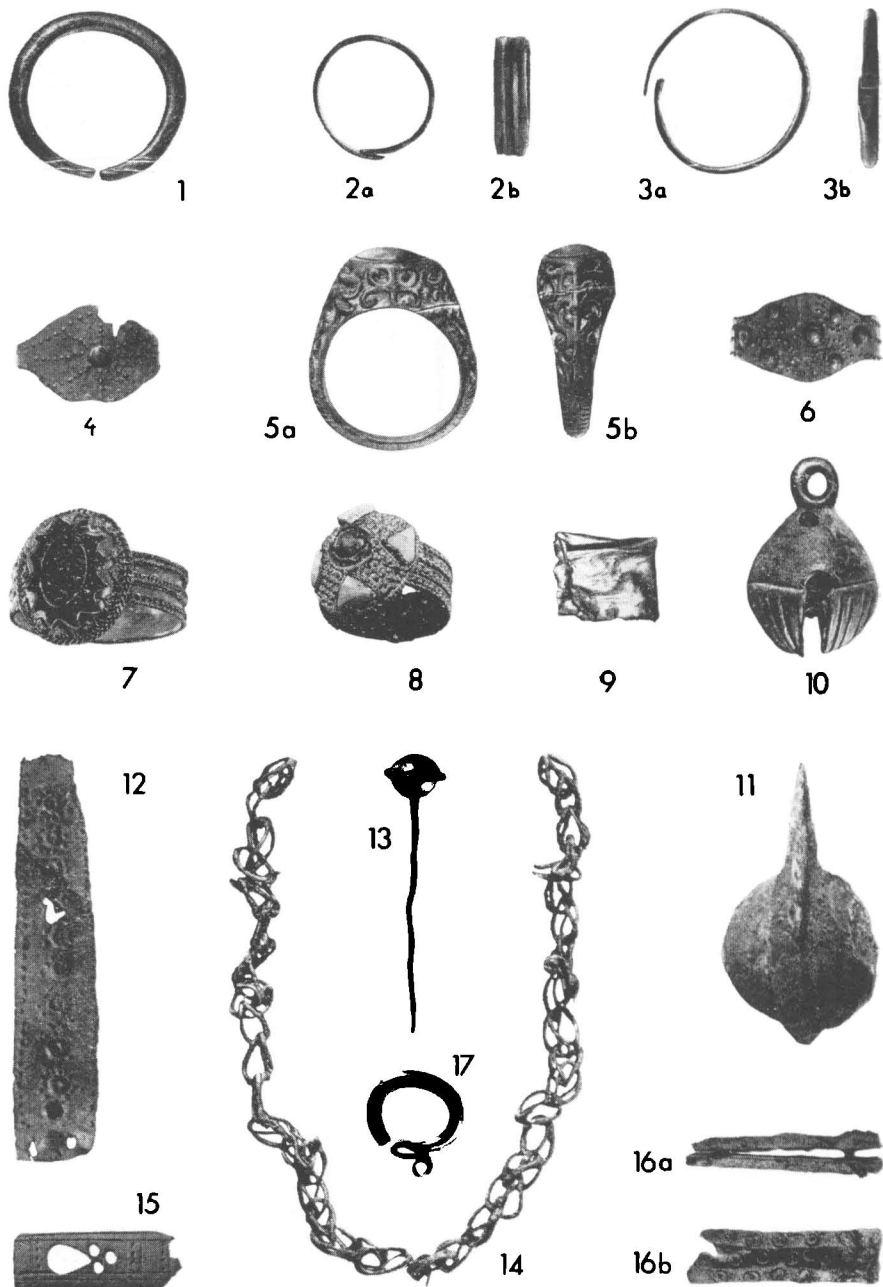
5

6

Tab. 32. 1a, b, c: H38-6; 2: H38-8; 3a, b, c: H136-1; 4a, b, c: H205-1; 5: H158-6; 6: H394-1. (1: 1)



Tab. 33. 1, 2: H205-3; 3: H242-3; 4: H17-1; 5: H269-1; 6a, b, c: H159-1; 7a, b, c: H141-3; 8: H136-3; 9: H351-1, 2; 10a, b, c: H141-1; 11: H29-2; 12: H69-2; 13a, b, c: H99-7; 14: H230-3. (1: 1)



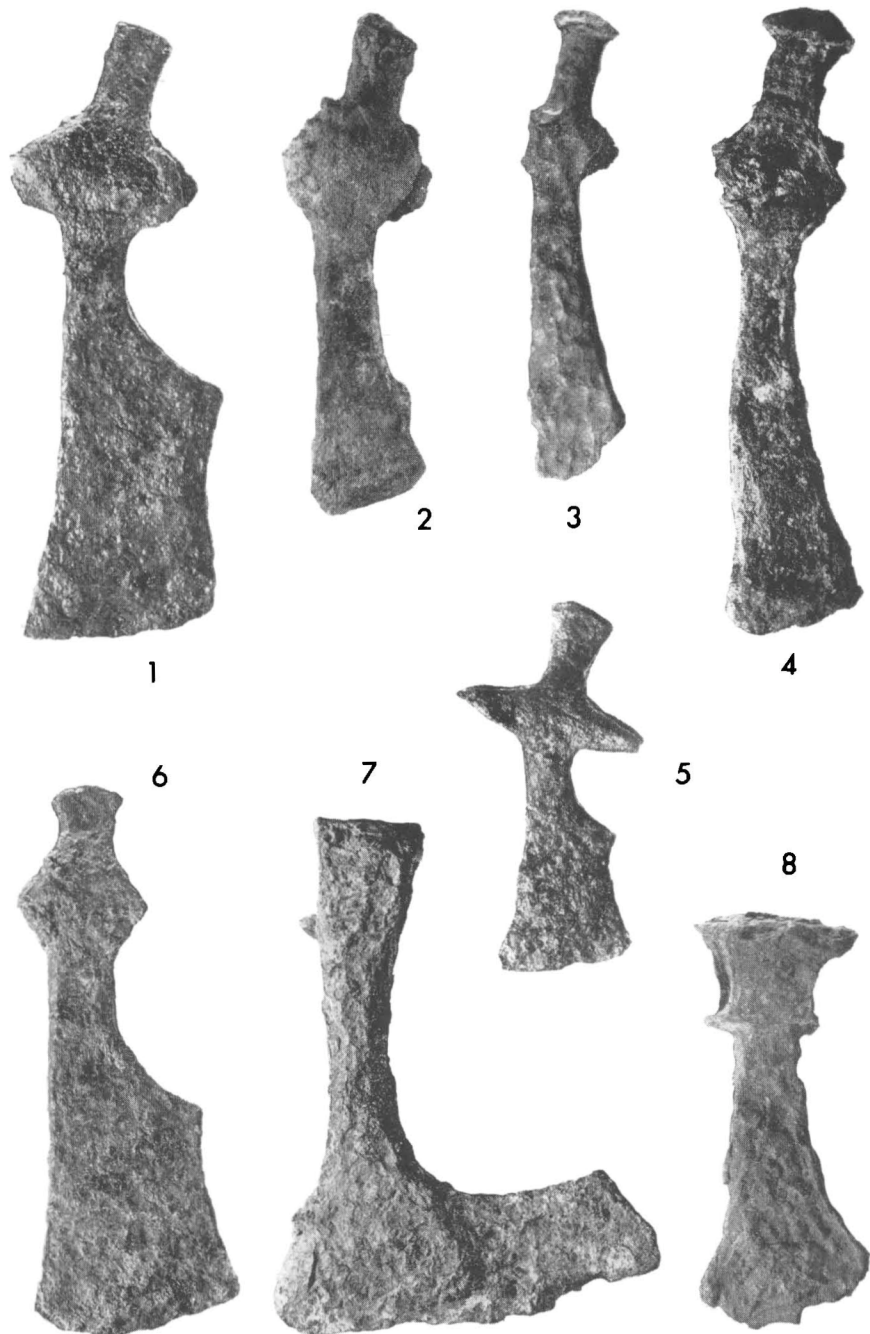
Tab. 34. 1: H45-1; 2a, b: H131-5; 3a, b: H116-2; 4: H342-9; 5a, 5b: H158-1
 6: H342-8; 7: H43-10; 8: H242-2; 9: H224-1; 10: H113-2, 11: H98-1
 12: H152-1; 13: H131-1; 14: H1-6; 15: H360-2; 16a, b: H174-15; 17: H75-
 2. (1:1)



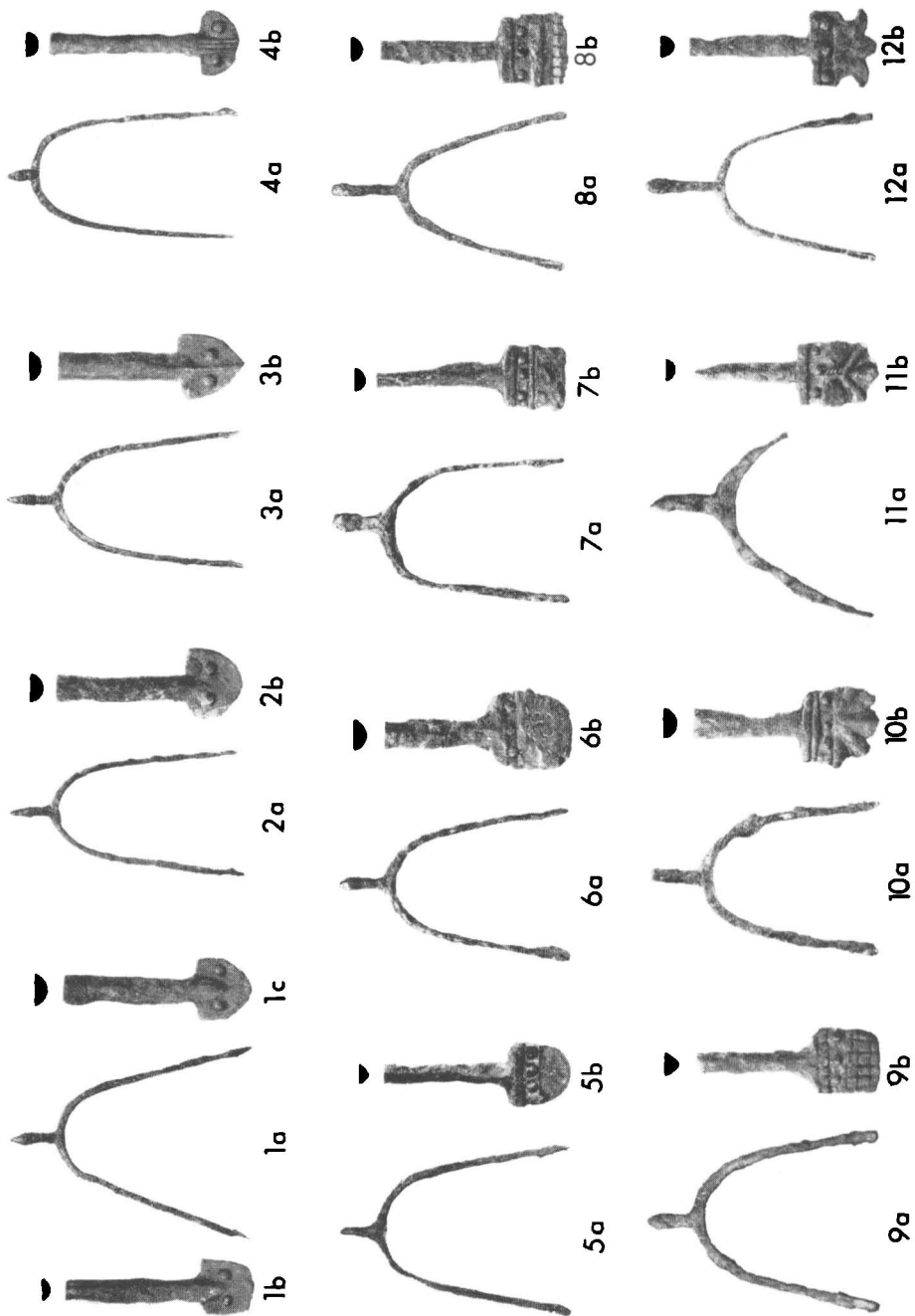
Tab. 35. 1 : H1-5; 2 : H394-4; 3 : H104-5; 4 : H330-1; 5 : H127-5; 6 : H368-1; 7 : H381-1; 8 : H270-8; 9 : H69-1; 10, 11 : H127-3, 4; 12 : H374-1. (1 : 1)



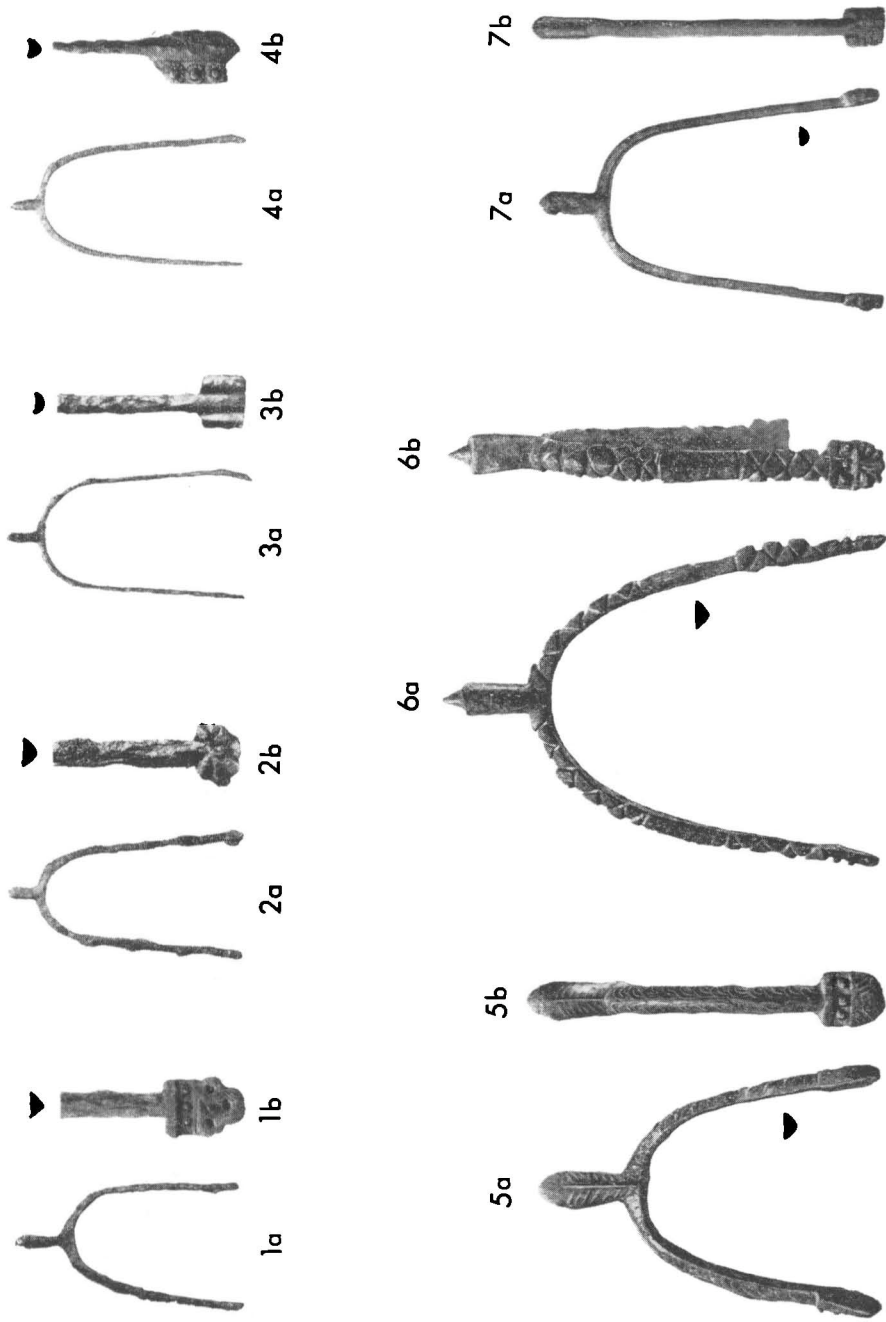
Tab. 36. 1: H65-1; 2: H174-1; 3: H257-1; 4: H26-1. (1:6)



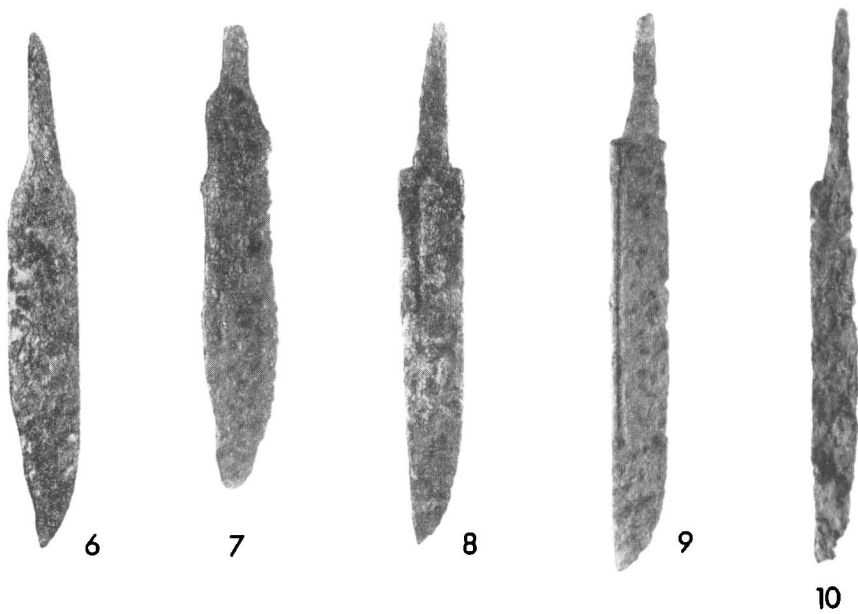
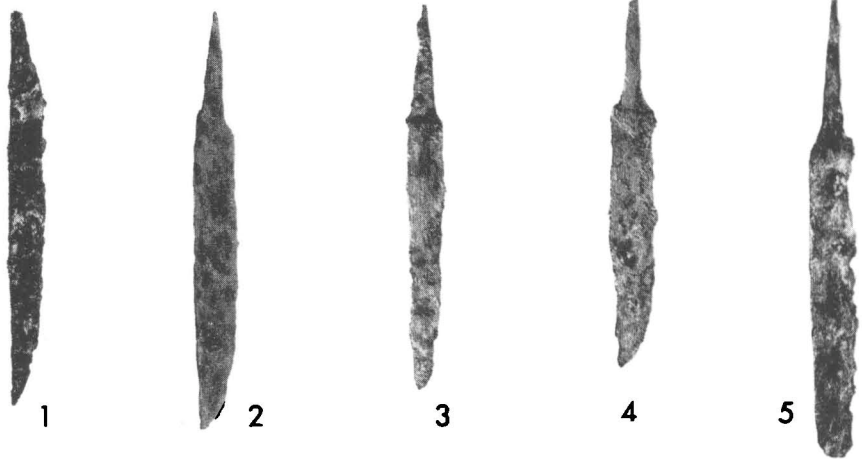
Tab. 37. 1 : H174-21; 2 : H147-4; 3 : H341-2; 4 : H246-11; 5 : H221-2; 6 : H148-6;
7 : H154-5; 8 : H375-3. (1 : 2)



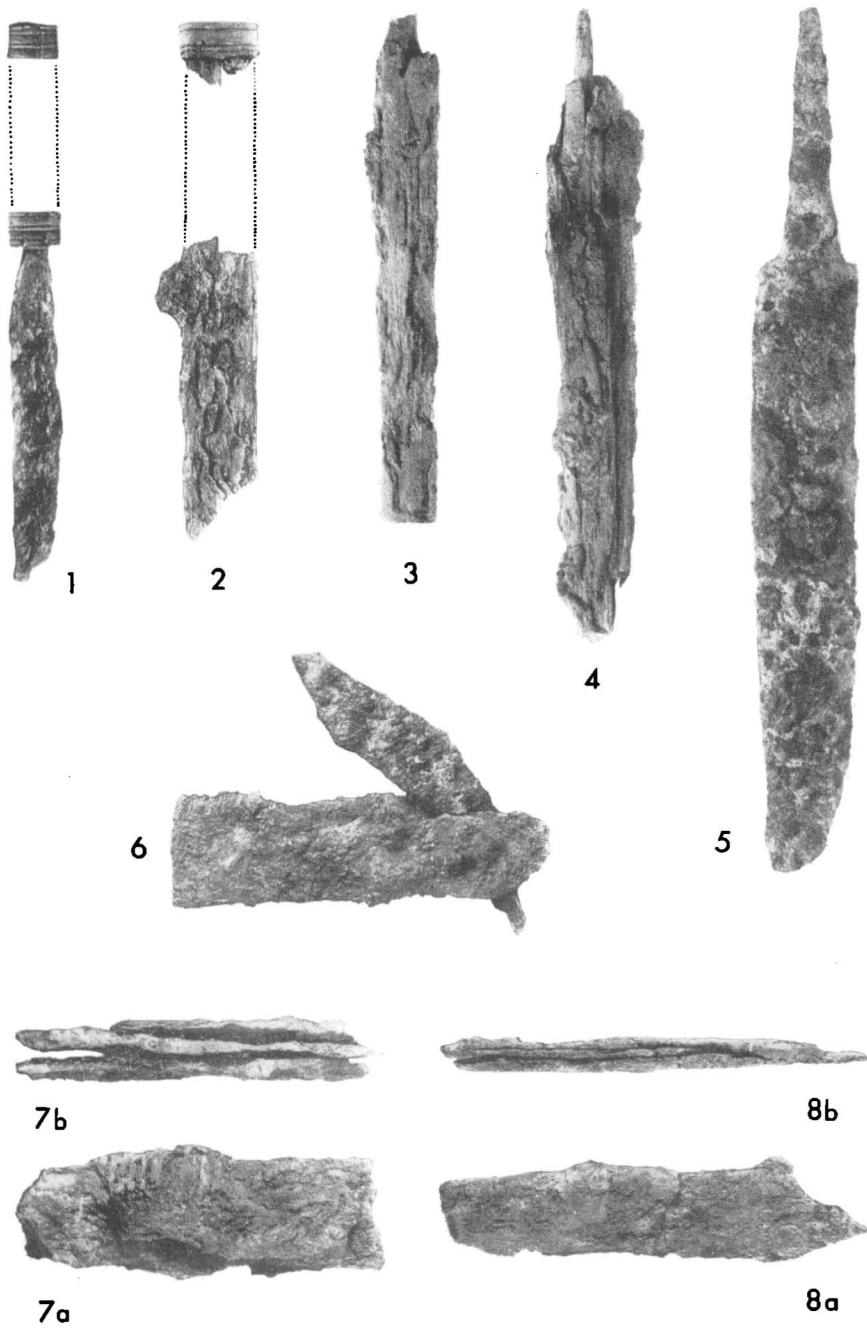
Tab. 38. 1a, b, c: H89-1; 2a, b: H154-6; 3a, b: H102-1, 2; 4a, b: H148-3, 4; 5a, b: H47-1a, b; 6a, b: H329-3; 7a, b: H375-5; 8a, b: H24-4, 5; 9a, b: H280-2, 3; 10a, b: H138-1, 2; 11a, b: H244-1, 2; 12a, b: H338-2, 3.



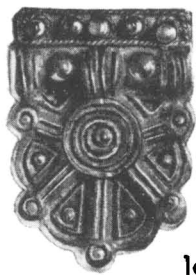
Tab. 39. 1a, b: H156-3; 2a, b: H169-2, 3; 3a, b: H174, 11, 12; 4a, b: H296-3; 5a, b: H225-1, 2; 6a, b: H277-1, 2; 7a, b: H230-6, 7.



Tab. 40. 1 : H98-3; 2 : H321-1; 3 : H239-3; 4 : H82-3; 5 : H7-1; 6 : H110-1; 7 : H77-1; 8 : H83-1; 9 : H148-1; 10 : H357-1; 11 : H232-1; 12 : H12-1. (1 : 2)



Tab. 41. 1: H50-1, 2, 4; 2: H79-1; 3: H169-1; 4: H185-1, 2; 5: H174-3; 6: H65-3a, b; 7a, b: H174-4; 8a, b: H174-5. (1 : 2)



1a



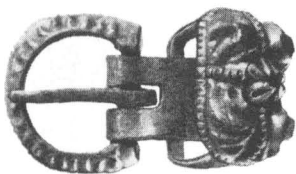
1b



2



4



5



3



6



7



8

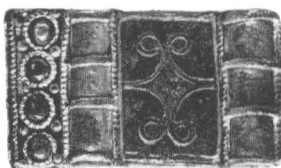


9



10

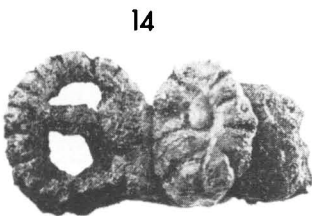
11



12



13



14



15

Tab. 42. 1a, b: H13-3a, b; 2: H13-1; 3: H13-2a, b; 4: H193-3; 5: H193-2a, b; 6: H225-5, 8; 7: H225-3, 6; 8: H225-4, 7; 9: H280-6, 7; 10, 11: H230-8, 9, 10, 11; 12: H253-1; 13, 14: H277-3, 6, 7-8; 15: H24-1, 3. (1: 1)



1



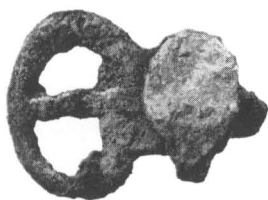
2



5



3



4



6

7

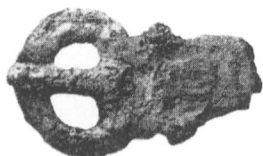
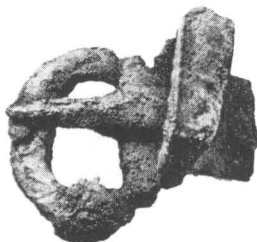


8

9



10



11

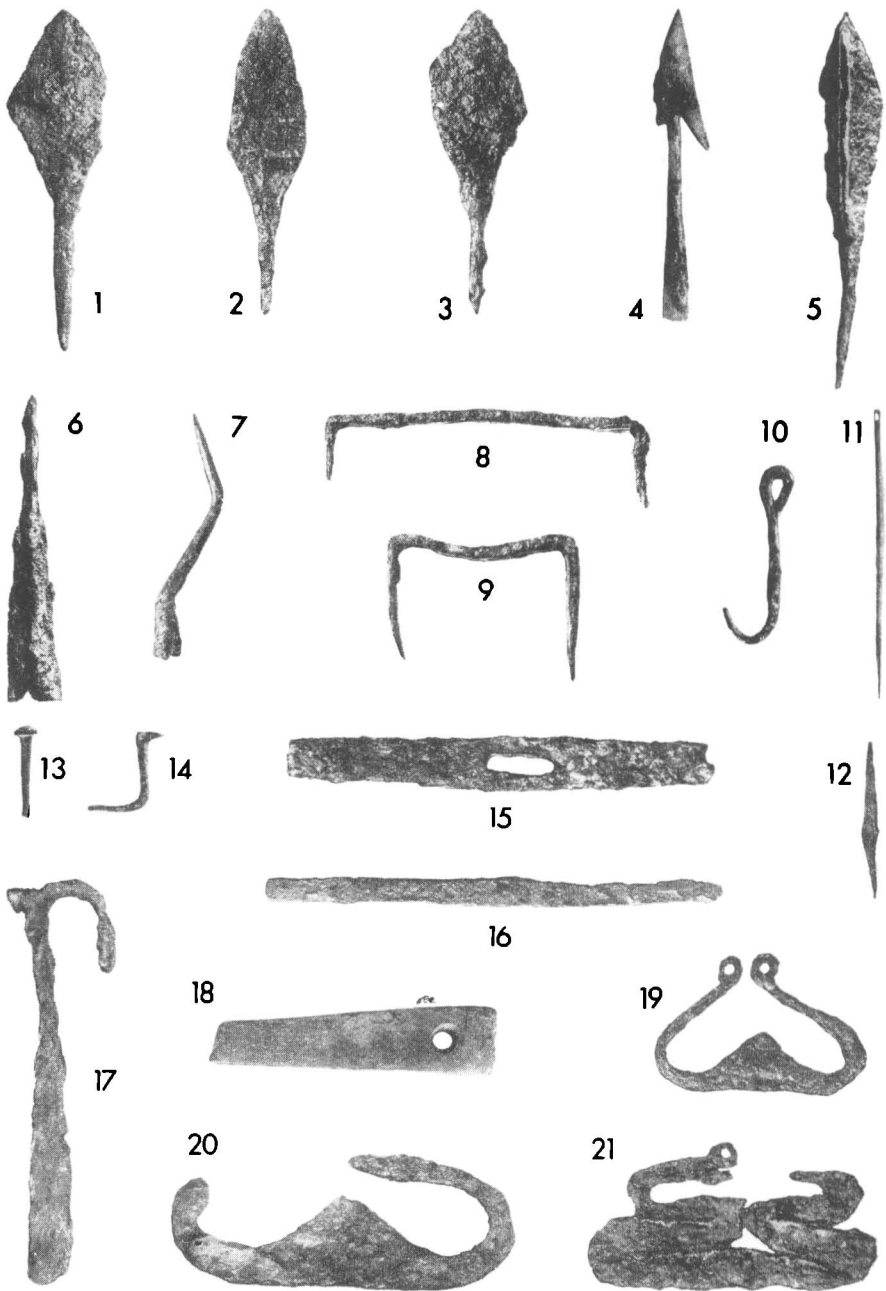


12



13

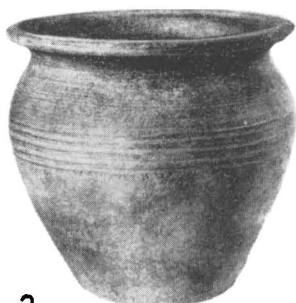
Tab. 43. 1: H269-5; 2: H269-3; 3: H370-5; 4: H370-1; 5: H329-7; 6: H329-6; 7: H ?; 8: H257-3; 9: H377-3; 10: H138-3; 11: H163-4, 5, 6; 12: H327-2; 13: H325-3. (1: 1)



Tab. 44. 1: H275-1; 2, 3: H20-1, 2; 4: H26-4; 5: H221-3; 6: H246-8; 7: H15-1; 8: H246-9; 9: H261-10; 10: H332-1; 11: H99-9; 12: H97-2; 13: H73-1; 14: H361-2; 15: H174-2; 16: H94-2; 17: H174-10; 18: H327-1; 19: H161-5; 20: H280-9; 21: H174-6. (1: 2)



1



2



3



4



5



6

Tab. 45. 1 : H390-1; 2 : H380-2; 3 : H348-2; 4 : H404-1; 5 : H400-1; 6 : H127-8. ($\frac{1}{3}$)



1



2



3

4



5



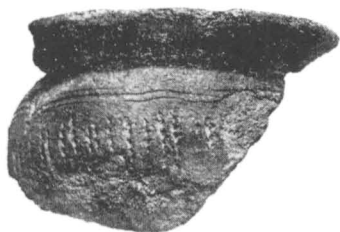
Tab. 46. 1 : H42-1; 2 : H78-1; 3 : H253-4; 4 : H375-11; 5 : H388-1. (1/3)



1



2

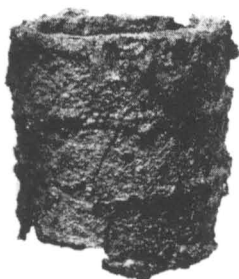
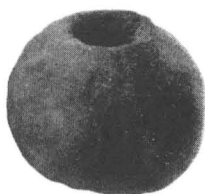


3



4

5



6



7

Tab. 47. 1: H116-6; 2: H343-1; 3: H84-1; 4: H157; 5: H374-3; 6: H225-15; 7: H374-5. (1-3, 6, 7 = 1:3; 4, 5 = 1:1)

